



February 6, 2019

Kate Graves  
Reclamation Representative  
Kerr-McGee Oil & Gas Onshore LP  
501 N Division Blvd  
Platteville, Colorado 80651

**RE: Colorado Oil & Gas Conservation Commission (COGCC)  
Vegetation Assessment Report (Interim Reclamation Completion Notice)  
Nichols 37N-31HZ (429182)  
Kerr-McGee Oil & Gas Onshore LP (Operator: 47120)**

Dear Ms. Graves:

Apex Companies, LLC (Apex) is presenting this letter to Kerr-McGee Oil & Gas Onshore LP (Kerr-McGee) documenting the results of a vegetation assessment that demonstrates successful completion of interim reclamation efforts, per COGCC Rule 1003, on the above-referenced location in Weld County, Colorado. Attached is a topographic location map, which identifies the referenced location.

Based on site visits and the completed vegetation assessment, Apex inspectors confirmed that the unused portions of the reduced production footprint have been stabilized and seeded with a mixture consistent with species composition and reseeding practices common to the area.

On July 30, 2018, modified step-point vegetation surveys were conducted on the reclaimed portion of the well pad, and on adjacent reference areas. Foliar and basal cover, along with non-vegetated, and noxious weed occurrences were documented; 100 survey points were recorded within the reclaimed disturbance and 100 survey points were recorded within the reference area. Vegetation survey points were identified using a bullseye target tool. Noxious weeds listed by the Colorado Department of Agriculture were excluded from the vegetative coverage calculations. The survey methodology employed by Apex is based on the *step-point method* described in an interagency technical reference published by the Bureau of Land Management (BLM, 1996).

Survey results indicate the reclaimed area has a foliar vegetative cover that is 113.08% of the reference area. Vegetation survey results are provided in the attached survey summary tables and data sheets. Based on the results of the survey, interim reclamation as defined by COGCC Rule 1003.e (2) has been achieved. Photographs required by COGCC Rule 1003.e (3) are also attached along with a site map illustrating vegetation survey efforts.

Apex appreciates the opportunity to provide environmental consulting services to Kerr-McGee with this project. Should you have any questions or require additional information, please do not hesitate to contact me.

Sincerely,  
**Apex Companies, LLC**



Adam Roll  
Environmental Scientist  
970-589-6111  
[Adam.Roll@apexcos.com](mailto:Adam.Roll@apexcos.com)

On behalf of -  
Chris Hines  
Oil and Gas Program Manager  
970-773-9865  
[Chris.Hines@apexcos.com](mailto:Chris.Hines@apexcos.com)

**Attachments:**

1. Vegetation Survey - Summary of Field Data
2. Topographic Location Map
3. Vegetation Survey Site Map
4. Vegetation Survey Photos
5. Vegetation Survey (Field Data Tables)

**Reference:**

United States (U.S.) Department of Agriculture (USDA), Forest Service (USFS), Natural Resource Conservation Service (NRCS) and U.S. Department of the Interior (USDOI) Bureau of Land Management (BLM). "Sampling Vegetation Attributes, Interagency Technical Reference, 1996 (Revised in 1997, and 1999)". USDOI BLM Technical References #1734-4.  
Date Accessed: 2 August, 2017

## Vegetation Survey - Summary of Field Data

<b>Client</b>	Kerr-McGee Oil & Gas Onshore LP
<b>COGCC Location Name (ID)</b>	Nichols 37N-31HZ (429182)
<b>Assessment Date</b>	7/30/2018
<b>Inspector Name</b>	Adam Roll

Based on the survey methodology, the foliar cover (%) in each survey area is calculated by summing the total number of foliar occurrences, excluding noxious weeds, and dividing by the total occurrences in the transects. For this location:

<b>Reclaim Area (Foliar Cover)</b>	<b>Reference Area (Foliar Cover)</b>
$(69 + 0 + 0) / 172 = \mathbf{40.12\%}$	$(53 + 2 + 0) / 155 = \mathbf{35.48\%}$

For purposes of this assessment, the undesirable foliar cover (%) in each survey area is calculated by summing the total number of foliar occurrences of Kochia (*Kochia scoparia*) and Russian thistle (*Salsola L.*), and dividing by the total occurrences in the transects, excluding noxious weeds. For this location:

<b>Reclaim Area (Undesirable Foliar Cover)</b>	<b>Reference Area (Undesirable Foliar Cover)</b>
$0 / (69 + 0 + 0) = \mathbf{0\%}$	$0 / (53 + 2 + 0) = \mathbf{0\%}$

The percent of reference used to evaluate the reclamation area for compliance with COGCC Rule 1003.e(2) is calculated by dividing the foliar cover (%) in the reclaim area by the foliar cover (%) in the reference area. For this location:

<b>Percent of Reference (Reclaim % / Reference %)</b>
$40.12\% / 35.48\% = \mathbf{113.08\%}$

### Reclaim Area Vegetation

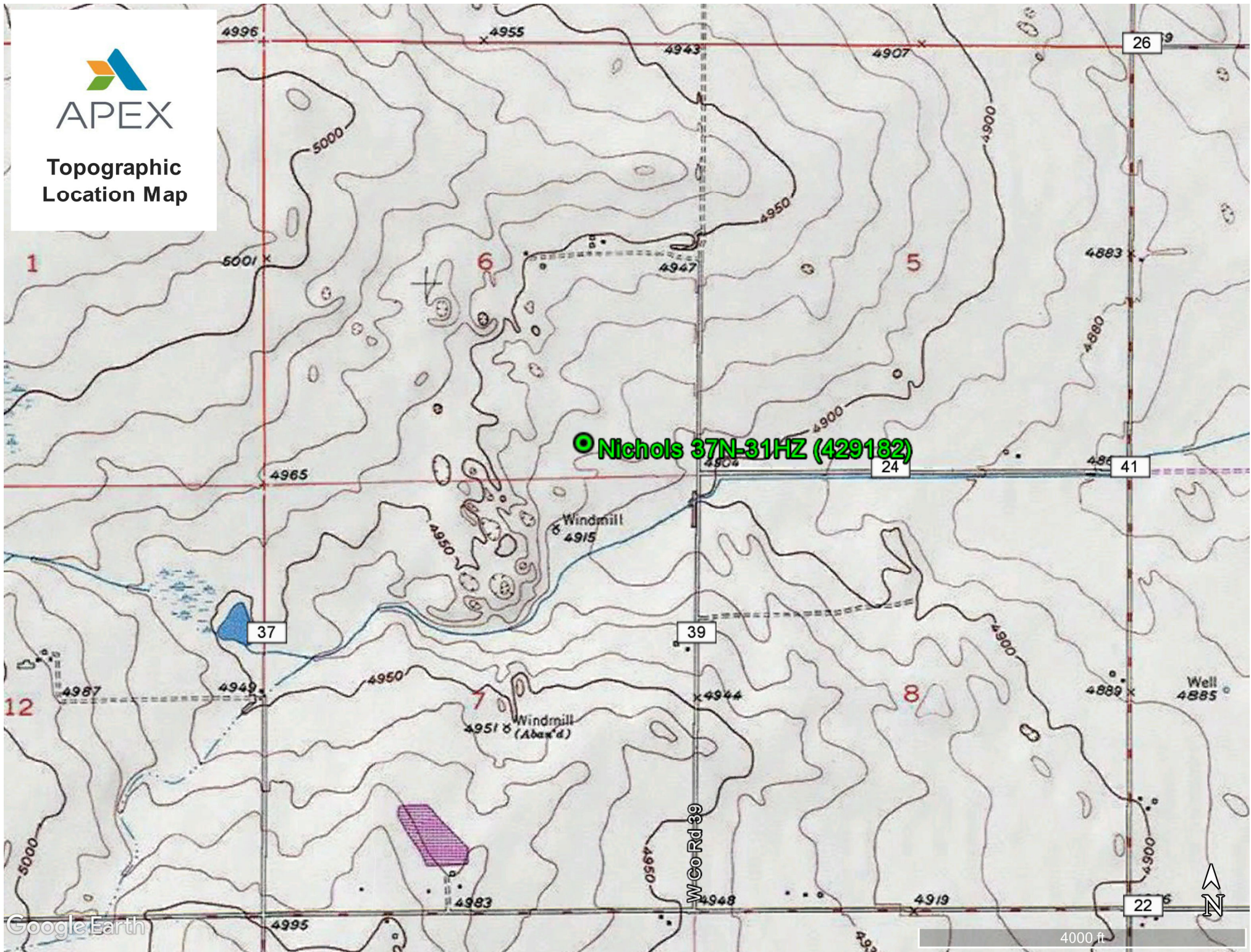
Foliar Cover	40.12%
Basal Cover	25.00%
Non Vegetated	33.14%
Noxious Weeds	1.74%
Undesirable	0.00%
<b>Quality Assurance Total</b> <i>(must equal 100)</i>	<b>100.00%</b>
Grass (Foliar)	69
Forb (Foliar)	0
Shrubs (Foliar)	0
Noxious Weed (Foliar)	3
Grass (Basal)	43
Forb (Basal)	0
Shrubs (Basal)	0
Noxious Weed (Basal)	0
Bare Ground	5
Litter	52
Rock	0
<b>Total Occurrences</b>	<b>172</b>

### Reference Area Vegetation

Foliar Cover	35.48%
Basal Cover	21.29%
Non Vegetated	43.23%
Noxious Weeds	0.00%
Undesirable	0.00%
<b>Quality Assurance Total</b> <i>(must equal 100)</i>	<b>100.00%</b>
Grass (Foliar)	53
Forb (Foliar)	2
Shrubs (Foliar)	0
Noxious Weed (Foliar)	0
Grass (Basal)	31
Forb (Basal)	2
Shrubs (Basal)	0
Noxious Weed (Basal)	0
Bare Ground	6
Litter	61
Rock	0
<b>Total Occurrences</b>	<b>155</b>



Topographic  
Location Map





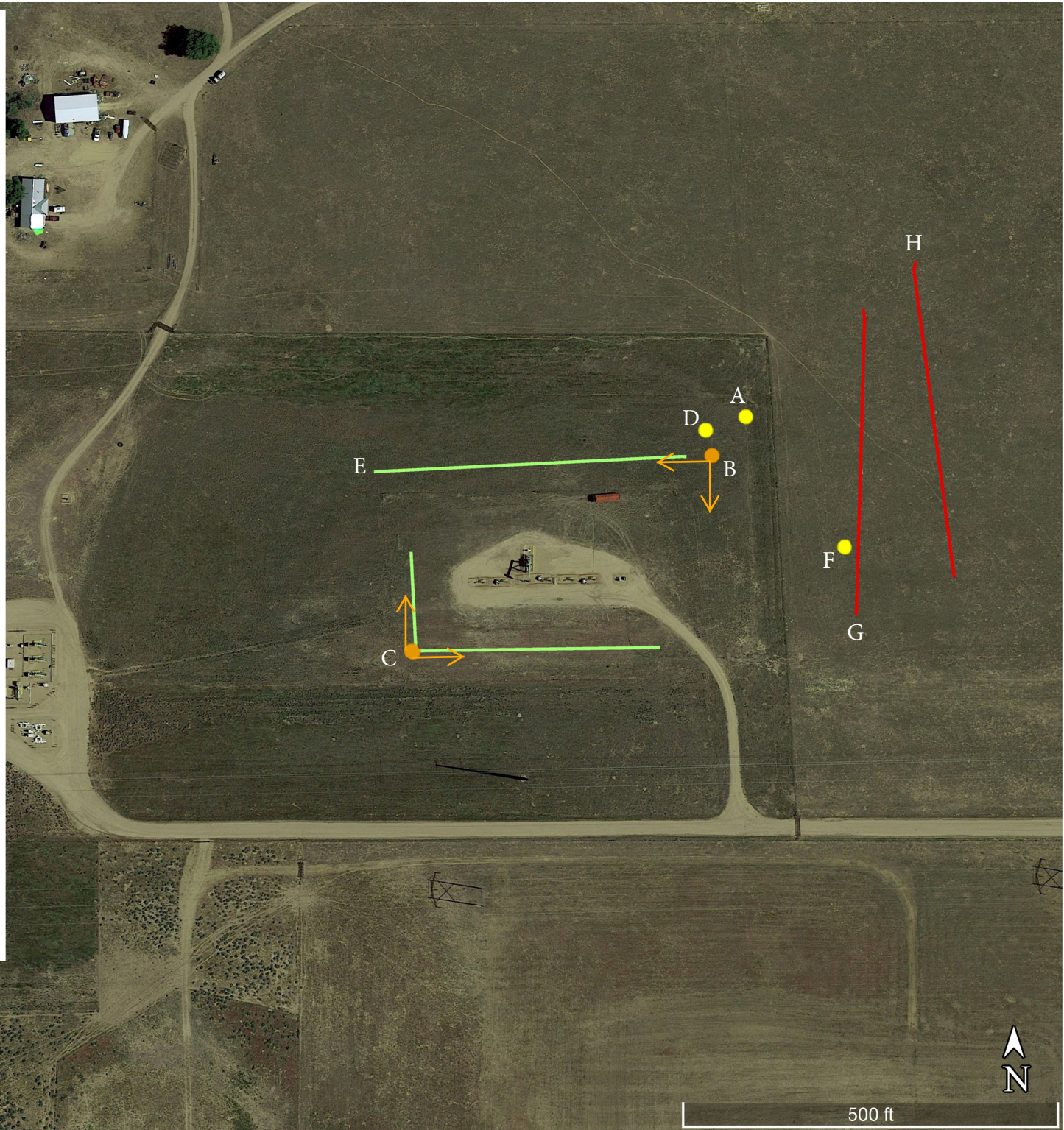
**Vegetation Survey Site Map**  
**Kerr-McGee**  
**Oil & Gas Onshore LP**

**Nichols 37N-31HZ**  
**(429182)**

- Vegetation Photo Point
- Cardinal Direction Photos
- Reclaim Transect
- Reference Transect

Legal Description: SWSE, Sec. 6, T2N-R65W  
County: Weld  
Land Use: Rangeland  
Reference Area Cover: 35.48%  
Reclaim Area Cover: 40.12%  
Cover Ratio (Reclaim/Reference): 113.08%  
Inspector: Adam Roll  
Assessment Date: 7/30/2018  
Aerial Imagery Date: 5/31/2018

*\*Please reference coordinate disclaimer on the photo log pages.*



# Vegetation Assessment Photo Log

Date Completed - 07/30/2018

Client - Kerr-McGee Oil & Gas Onshore LP

Location Name (ID) - Nichols 37N-31HZ (429182)



Photo Point A: Edge of Disturbance - Facing South

\*Geographic coordinates provided in the borders of all attached photos are based on points identified by the mobile phone or tablet which collected the photo. Coordinate accuracy in this format is typically no greater than 5 meters, while the points illustrated in the site diagram associated with this submittal were collected with a high accuracy GPS unit with sub-meter accuracy. Discrepancies between the site diagram and photo coordinates will exist.

# Vegetation Assessment Photo Log

Date Completed - 07/30/2018

Client - Kerr-McGee Oil & Gas Onshore LP

Location Name (ID) - Nichols 37N-31HZ (429182)



Photo Point B: North of Disturbance - Facing South



Photo Point C: South of Disturbance - Facing North



Photo Point C: West of Disturbance - Facing East



Photo Point B: East of Disturbance - Facing West

# Vegetation Assessment Photo Log

Date Completed - 07/30/2018

Client - Kerr-McGee Oil & Gas Onshore LP

Location Name (ID) - Nichols 37N-31HZ (429182)



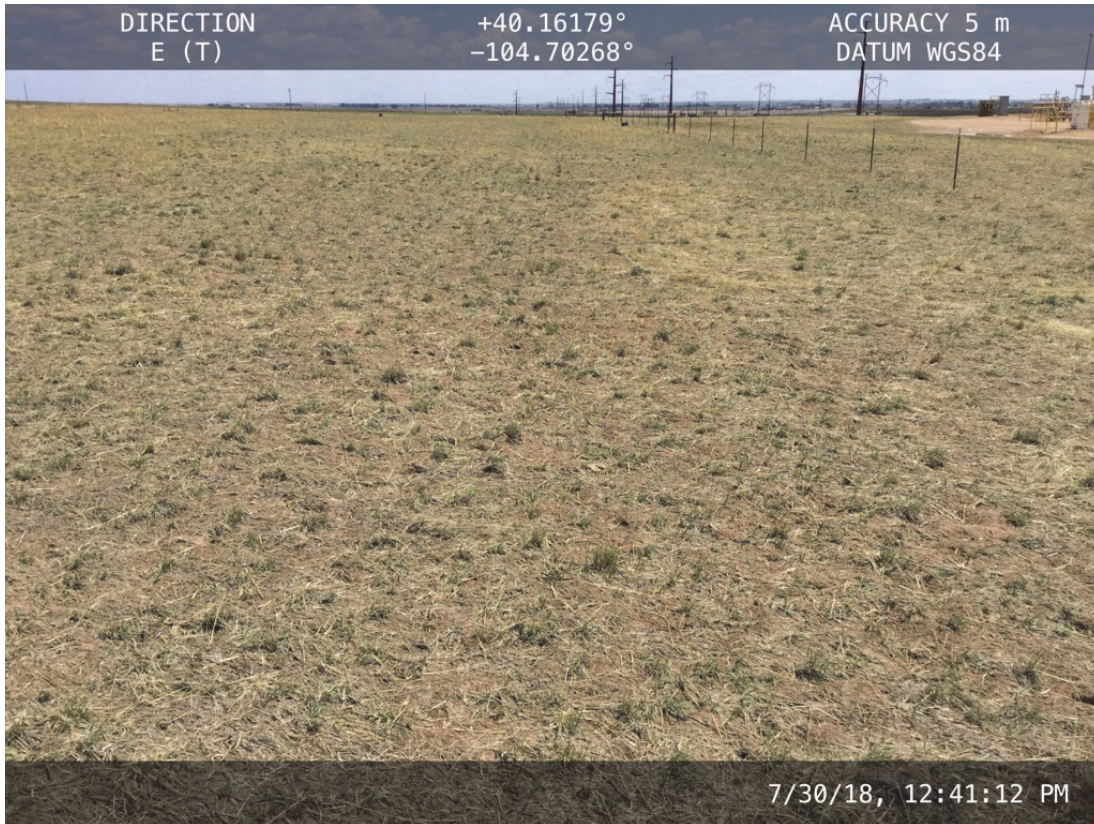
Photo Point D: Reclaim Area Vegetation Photo Point - Facing Southwest

# Vegetation Assessment Photo Log

Date Completed - 07/30/2018

Client - Kerr-McGee Oil & Gas Onshore LP

Location Name (ID) - Nichols 37N-31HZ (429182)



Transect Photo E: Reclaim Transect 1 - Facing East



Photo Point C: Reclaim Transect 2 - Facing East

# Vegetation Assessment Photo Log

Date Completed - 07/30/2018

Client - Kerr-McGee Oil & Gas Onshore LP

Location Name (ID) - Nichols 37N-31HZ (429182)



Photo Point F: Reference Area Vegetation Photo Point - Facing Northeast

**Vegetation Assessment Photo Log**

Client - Kerr-McGee Oil & Gas Onshore LP



Date Completed - 07/30/2018

Location Name (ID) - Nichols 37N-31HZ (429182)



Transect Photo G: Reference Transect 1 - Facing North



Transect Photo H: Reference Transect 2 - Facing South

# Vegetation Survey (Field Data Table)

**Client:** Kerr-McGee Oil & Gas Onshore LP  
**COGCC Location Name (ID):** Nichols 37N-31HZ (429182)  
**Transect ID:** Reclaim Transect 1  
**Transect Length:** 435 ft.  
**Assessment Date:** 7/30/2018  
**Inspector:** Adam Roll

Point	Type	Foliar	Species	Type	Basal	Species
1	Foliar	Grass	Sporobolus cryptandrus	Non_Vegetative	Litter	Litter
2	Foliar	Grass	Sporobolus cryptandrus	Basal	Grass	Sporobolus cryptandrus
3	Foliar	Grass	Sporobolus cryptandrus	Basal	Grass	Sporobolus cryptandrus
4	Foliar			Non_Vegetative	Litter	Litter
5	Foliar			Non_Vegetative	Litter	Litter
6	Foliar	Grass	Sporobolus cryptandrus	Non_Vegetative	Litter	Litter
7	Foliar	Grass	Elymus L	Basal	Grass	Elymus L
8	Foliar	Grass	Sporobolus cryptandrus	Basal	Grass	Sporobolus cryptandrus
9	Foliar			Non_Vegetative	Litter	Litter
10	Foliar	Grass	Elymus L	Basal	Grass	Elymus L
11	Foliar	Grass	Sporobolus cryptandrus	Basal	Grass	Sporobolus cryptandrus
12	Foliar	Grass	Elymus L	Basal	Grass	Elymus L
13	Foliar	Grass	Elymus L	Non_Vegetative	Litter	Litter
14	Foliar	Grass	Sporobolus cryptandrus	Non_Vegetative	Litter	Litter
15	Foliar			Non_Vegetative	Litter	Litter
16	Foliar			Non_Vegetative	Bare_Ground	Bare Ground
17	Foliar	Grass	Elymus L	Non_Vegetative	Litter	Litter
18	Foliar	Grass	Sporobolus cryptandrus	Basal	Grass	Sporobolus cryptandrus
19	Foliar	Grass	Sporobolus cryptandrus	Basal	Grass	Sporobolus cryptandrus
20	Foliar	Grass	Sporobolus cryptandrus	Non_Vegetative	Litter	Litter
21	Foliar			Non_Vegetative	Litter	Litter
22	Foliar	Grass	Elymus L	Basal	Grass	Elymus L
23	Foliar	Grass	Elymus L	Basal	Grass	Elymus L
24	Foliar	Grass	Sporobolus cryptandrus	Non_Vegetative	Litter	Litter
25	Foliar			Non_Vegetative	Litter	Litter
26	Foliar			Non_Vegetative	Litter	Litter
27	Foliar			Non_Vegetative	Litter	Litter
28	Foliar	Grass	Sporobolus cryptandrus	Non_Vegetative	Litter	Litter
29	Foliar	Grass	Sporobolus cryptandrus	Basal	Grass	Sporobolus cryptandrus
30	Foliar	Grass	Elymus L	Basal	Grass	Elymus L
31	Foliar	Grass	Sporobolus cryptandrus	Basal	Grass	Sporobolus cryptandrus
32	Foliar	Grass	Poa secunda	Basal	Grass	Poa secunda
33	Foliar	Grass	Sporobolus cryptandrus	Non_Vegetative	Litter	Litter
34	Foliar	Grass	Sporobolus cryptandrus	Basal	Grass	Sporobolus cryptandrus
35	Foliar	Grass	Sporobolus cryptandrus	Non_Vegetative	Litter	Litter
36	Foliar			Non_Vegetative	Litter	Litter
37	Foliar			Non_Vegetative	Litter	Litter
38	Foliar			Non_Vegetative	Litter	Litter
39	Foliar			Non_Vegetative	Litter	Litter
40	Foliar	Grass	Sporobolus cryptandrus	Basal	Grass	Sporobolus cryptandrus
41	Foliar	Grass	Elymus L	Basal	Grass	Elymus L
42	Foliar			Non_Vegetative	Litter	Litter
43	Foliar	Grass	Sporobolus cryptandrus	Basal	Grass	Sporobolus cryptandrus
44	Foliar	Grass	Sporobolus cryptandrus	Non_Vegetative	Litter	Litter
45	Foliar	Grass	Sporobolus cryptandrus	Basal	Grass	Sporobolus cryptandrus
46	Foliar			Non_Vegetative	Litter	Litter
47	Foliar	Grass	Sporobolus cryptandrus	Non_Vegetative	Litter	Litter
48	Foliar	Grass	Poa secunda	Basal	Grass	Poa secunda
49	Foliar	Grass	Elymus L	Basal	Grass	Elymus L
50	Foliar	Grass	Poa secunda	Basal	Grass	Poa secunda

# Vegetation Survey (Field Data Table)

**Client:** Kerr-McGee Oil & Gas Onshore LP  
**COGCC Location Name (ID):** Nichols 37N-31HZ (429182)  
**Transect ID:** Reclaim Transect 2  
**Transect Length:** 470 ft.  
**Assessment Date:** 7/30/2018  
**Inspector:** Adam Roll

Point	Type	Foliar	Species	Type	Basal	Species
1	Foliar	Grass	Elymus L	Non_Vegetative	Litter	Litter
2	Foliar	Grass	Poa secunda	Basal	Grass	Poa secunda
3	Foliar	Grass	Elymus L	Basal	Grass	Elymus L
4	Foliar	Grass	Elymus L	Basal	Grass	Elymus L
5	Foliar	Grass	Elymus L	Basal	Grass	Elymus L
6	Foliar			Non_Vegetative	Litter	Litter
7	Foliar	Grass	Poa secunda	Non_Vegetative	Litter	Litter
8	Foliar	Grass	Elymus L	Non_Vegetative	Litter	Litter
9	Foliar			Non_Vegetative	Litter	Litter
10	Foliar	Noxious_Weed_C	Bromus tectorum	Non_Vegetative	Litter	Litter
11	Foliar	Grass	Elymus L	Non_Vegetative	Litter	Litter
12	Foliar	Grass	Elymus L	Non_Vegetative	Litter	Litter
13	Foliar	Grass	Elymus L	Non_Vegetative	Bare_Ground	Bare Ground
14	Foliar			Non_Vegetative	Litter	Litter
15	Foliar			Non_Vegetative	Litter	Litter
16	Foliar	Noxious_Weed_C	Bromus tectorum	Non_Vegetative	Litter	Litter
17	Foliar	Grass	Sporobolus cryptandrus	Non_Vegetative	Litter	Litter
18	Foliar	Grass	Poa secunda	Basal	Grass	Poa secunda
19	Foliar	Grass	Elymus L	Non_Vegetative	Bare_Ground	Bare Ground
20	Foliar			Non_Vegetative	Litter	Litter
21	Foliar	Noxious_Weed_C	Bromus tectorum	Non_Vegetative	Bare_Ground	Bare Ground
22	Foliar	Grass	Elymus L	Non_Vegetative	Litter	Litter
23	Foliar			Non_Vegetative	Bare_Ground	Bare Ground
24	Foliar			Non_Vegetative	Litter	Litter
25	Foliar			Non_Vegetative	Litter	Litter
26	Foliar	Grass	Elymus L	Basal	Grass	Elymus L
27	Foliar	Grass	Elymus L	Basal	Grass	Elymus L
28	Foliar	Grass	Sporobolus cryptandrus	Basal	Grass	Sporobolus cryptandrus
29	Foliar	Grass	Sporobolus cryptandrus	Basal	Grass	Sporobolus cryptandrus
30	Foliar	Grass	Elymus L	Basal	Grass	Elymus L
31	Foliar	Grass	Sporobolus cryptandrus	Basal	Grass	Sporobolus cryptandrus
32	Foliar			Non_Vegetative	Litter	Litter
33	Foliar	Grass	Sporobolus cryptandrus	Basal	Grass	Sporobolus cryptandrus
34	Foliar	Grass	Sporobolus cryptandrus	Basal	Grass	Sporobolus cryptandrus
35	Foliar	Grass	Elymus L	Non_Vegetative	Litter	Litter
36	Foliar	Grass	Elymus L	Non_Vegetative	Litter	Litter
37	Foliar	Grass	Sporobolus cryptandrus	Non_Vegetative	Litter	Litter
38	Foliar	Grass	Elymus L	Basal	Grass	Elymus L
39	Foliar	Grass	Sporobolus cryptandrus	Basal	Grass	Sporobolus cryptandrus
40	Foliar			Non_Vegetative	Litter	Litter
41	Foliar	Grass	Sporobolus cryptandrus	Non_Vegetative	Litter	Litter
42	Foliar	Grass	Sporobolus cryptandrus	Basal	Grass	Sporobolus cryptandrus
43	Foliar	Grass	Sporobolus cryptandrus	Non_Vegetative	Litter	Litter
44	Foliar	Grass	Sporobolus cryptandrus	Basal	Grass	Sporobolus cryptandrus
45	Foliar	Grass	Elymus L	Basal	Grass	Elymus L
46	Foliar			Non_Vegetative	Litter	Litter
47	Foliar			Non_Vegetative	Litter	Litter
48	Foliar	Grass	Sporobolus cryptandrus	Basal	Grass	Sporobolus cryptandrus
49	Foliar	Grass	Sporobolus cryptandrus	Basal	Grass	Sporobolus cryptandrus
50	Foliar			Non_Vegetative	Litter	Litter

# Vegetation Survey (Field Data Table)

**Client:** Kerr-McGee Oil & Gas Onshore LP  
**COGCC Location Name (ID):** Nichols 37N-31HZ (429182)  
**Transect ID:** Reference Transect 1  
**Transect Length:** 430 ft.  
**Assessment Date:** 7/30/2018  
**Inspector:** Adam Roll

Point	Type	Foliar	Species	Type	Basal	Species
1	Foliar	Grass	Sporobolus cryptandrus	Basal	Grass	Sporobolus cryptandrus
2	Foliar			Non_Vegetative	Litter	Litter
3	Foliar			Non_Vegetative	Litter	Litter
4	Foliar	Grass	Elymus L	Basal	Grass	Elymus L
5	Foliar	Grass	Elymus L	Basal	Grass	Elymus L
6	Foliar			Non_Vegetative	Litter	Litter
7	Foliar	Grass	Elymus L	Non_Vegetative	Litter	Litter
8	Foliar			Non_Vegetative	Litter	Litter
9	Foliar	Grass	Elymus L	Non_Vegetative	Litter	Litter
10	Foliar	Grass	Elymus L	Non_Vegetative	Litter	Litter
11	Foliar			Non_Vegetative	Litter	Litter
12	Foliar	Grass	Elymus L	Basal	Grass	Elymus L
13	Foliar	Grass	Elymus L	Basal	Grass	Elymus L
14	Foliar			Non_Vegetative	Bare_Ground	Bare Ground
15	Foliar	Grass	Elymus L	Non_Vegetative	Litter	Litter
16	Foliar			Non_Vegetative	Litter	Litter
17	Foliar	Grass	Sporobolus cryptandrus	Basal	Grass	Sporobolus cryptandrus
18	Foliar	Grass	Elymus L	Non_Vegetative	Litter	Litter
19	Foliar			Non_Vegetative	Litter	Litter
20	Foliar			Non_Vegetative	Litter	Litter
21	Foliar	Grass	Elymus L	Non_Vegetative	Litter	Litter
22	Foliar	Grass	Elymus L	Basal	Grass	Elymus L
23	Foliar	Grass	Elymus L	Basal	Grass	Elymus L
24	Foliar	Grass	Elymus L	Non_Vegetative	Litter	Litter
25	Foliar			Non_Vegetative	Litter	Litter
26	Foliar	Grass	Elymus L	Non_Vegetative	Litter	Litter
27	Foliar			Non_Vegetative	Litter	Litter
28	Foliar	Grass	Elymus L	Non_Vegetative	Litter	Litter
29	Foliar			Non_Vegetative	Litter	Litter
30	Foliar			Non_Vegetative	Litter	Litter
31	Foliar	Grass	Elymus L	Basal	Grass	Elymus L
32	Foliar			Non_Vegetative	Bare_Ground	Bare Ground
33	Foliar	Grass	Elymus L	Basal	Grass	Elymus L
34	Foliar	Grass	Sporobolus cryptandrus	Basal	Grass	Sporobolus cryptandrus
35	Foliar			Non_Vegetative	Litter	Litter
36	Foliar	Grass	Elymus L	Basal	Grass	Elymus L
37	Foliar			Non_Vegetative	Litter	Litter
38	Foliar	Grass	Elymus L	Non_Vegetative	Litter	Litter
39	Foliar	Grass	Sporobolus cryptandrus	Non_Vegetative	Litter	Litter
40	Foliar	Grass	Elymus L	Non_Vegetative	Litter	Litter
41	Foliar			Non_Vegetative	Litter	Litter
42	Foliar			Non_Vegetative	Litter	Litter
43	Foliar	Grass	Elymus L	Basal	Grass	Elymus L
44	Foliar			Non_Vegetative	Litter	Litter
45	Foliar	Grass	Sporobolus cryptandrus	Basal	Grass	Sporobolus cryptandrus
46	Foliar	Grass	Elymus L	Non_Vegetative	Litter	Litter
47	Foliar	Grass	Sporobolus cryptandrus	Basal	Grass	Sporobolus cryptandrus
48	Foliar			Non_Vegetative	Litter	Litter
49	Foliar			Non_Vegetative	Litter	Litter
50	Foliar			Non_Vegetative	Bare_Ground	Bare Ground

# Vegetation Survey (Field Data Table)

**Client:** Kerr-McGee Oil & Gas Onshore LP  
**COGCC Location Name (ID):** Nichols 37N-31HZ (429182)  
**Transect ID:** Reference Transect 2  
**Transect Length:** 446 ft.  
**Assessment Date:** 7/30/2018  
**Inspector:** Adam Roll

Point	Type	Foliar	Species	Type	Basal	Species
1	Foliar			Non_Vegetative	Litter	Litter
2	Foliar	Grass	Elymus L	Non_Vegetative	Litter	Litter
3	Foliar	Grass	Sporobolus cryptandrus	Basal	Grass	Sporobolus cryptandrus
4	Foliar	Grass	Elymus L	Non_Vegetative	Litter	Litter
5	Foliar			Non_Vegetative	Litter	Litter
6	Foliar			Non_Vegetative	Bare_Ground	Bare Ground
7	Foliar	Grass	Elymus L	Basal	Grass	Sporobolus cryptandrus
8	Foliar			Non_Vegetative	Litter	Litter
9	Foliar			Non_Vegetative	Litter	Litter
10	Foliar			Non_Vegetative	Litter	Litter
11	Foliar	Grass	Elymus L	Non_Vegetative	Litter	Litter
12	Foliar	Grass	Elymus L	Basal	Grass	Elymus L
13	Foliar	Grass	Elymus L	Non_Vegetative	Litter	Litter
14	Foliar	Grass	Elymus L	Basal	Grass	Elymus L
15	Foliar			Non_Vegetative	Litter	Litter
16	Foliar	Grass	Elymus L	Non_Vegetative	Litter	Litter
17	Foliar	Grass	Elymus L	Basal	Grass	Elymus L
18	Foliar			Non_Vegetative	Litter	Litter
19	Foliar			Non_Vegetative	Bare_Ground	Bare Ground
20	Foliar			Non_Vegetative	Litter	Litter
21	Foliar			Non_Vegetative	Litter	Litter
22	Foliar	Grass	Elymus L	Basal	Grass	Elymus L
23	Foliar	Grass	Elymus L	Basal	Grass	Elymus L
24	Foliar			Non_Vegetative	Litter	Litter
25	Foliar			Non_Vegetative	Litter	Litter
26	Foliar			Non_Vegetative	Litter	Litter
27	Foliar	Grass	Sporobolus cryptandrus	Basal	Grass	Sporobolus cryptandrus
28	Foliar			Non_Vegetative	Litter	Litter
29	Foliar	Grass	Elymus L	Non_Vegetative	Litter	Litter
30	Foliar	Grass	Sporobolus cryptandrus	Basal	Grass	Sporobolus cryptandrus
31	Foliar	Grass	Elymus L	Non_Vegetative	Litter	Litter
32	Foliar			Non_Vegetative	Litter	Litter
33	Foliar	Forb	Opuntia spp	Basal	Forb	Opuntia spp
34	Foliar	Other	Lambsquarters	Basal	Other	Lambsquarters
35	Foliar			Non_Vegetative	Litter	Litter
36	Foliar			Non_Vegetative	Litter	Litter
37	Foliar	Grass	Elymus L	Basal	Grass	Elymus L
38	Foliar	Grass	Elymus L	Basal	Grass	Elymus L
39	Foliar	Grass	Elymus L	Basal	Grass	Elymus L
40	Foliar			Non_Vegetative	Litter	Litter
41	Foliar	Grass	Sporobolus cryptandrus	Basal	Grass	Sporobolus cryptandrus
42	Foliar			Non_Vegetative	Litter	Litter
43	Foliar	Grass	Sporobolus cryptandrus	Basal	Grass	Sporobolus cryptandrus
44	Foliar			Non_Vegetative	Litter	Litter
45	Foliar	Grass	Sporobolus cryptandrus	Basal	Grass	Sporobolus cryptandrus
46	Foliar	Grass	Sporobolus cryptandrus	Basal	Grass	Sporobolus cryptandrus
47	Foliar	Grass	Elymus L	Non_Vegetative	Litter	Litter
48	Foliar			Non_Vegetative	Litter	Litter
49	Foliar			Non_Vegetative	Bare_Ground	Bare Ground
50	Foliar	Grass	Elymus L	Non_Vegetative	Litter	Litter