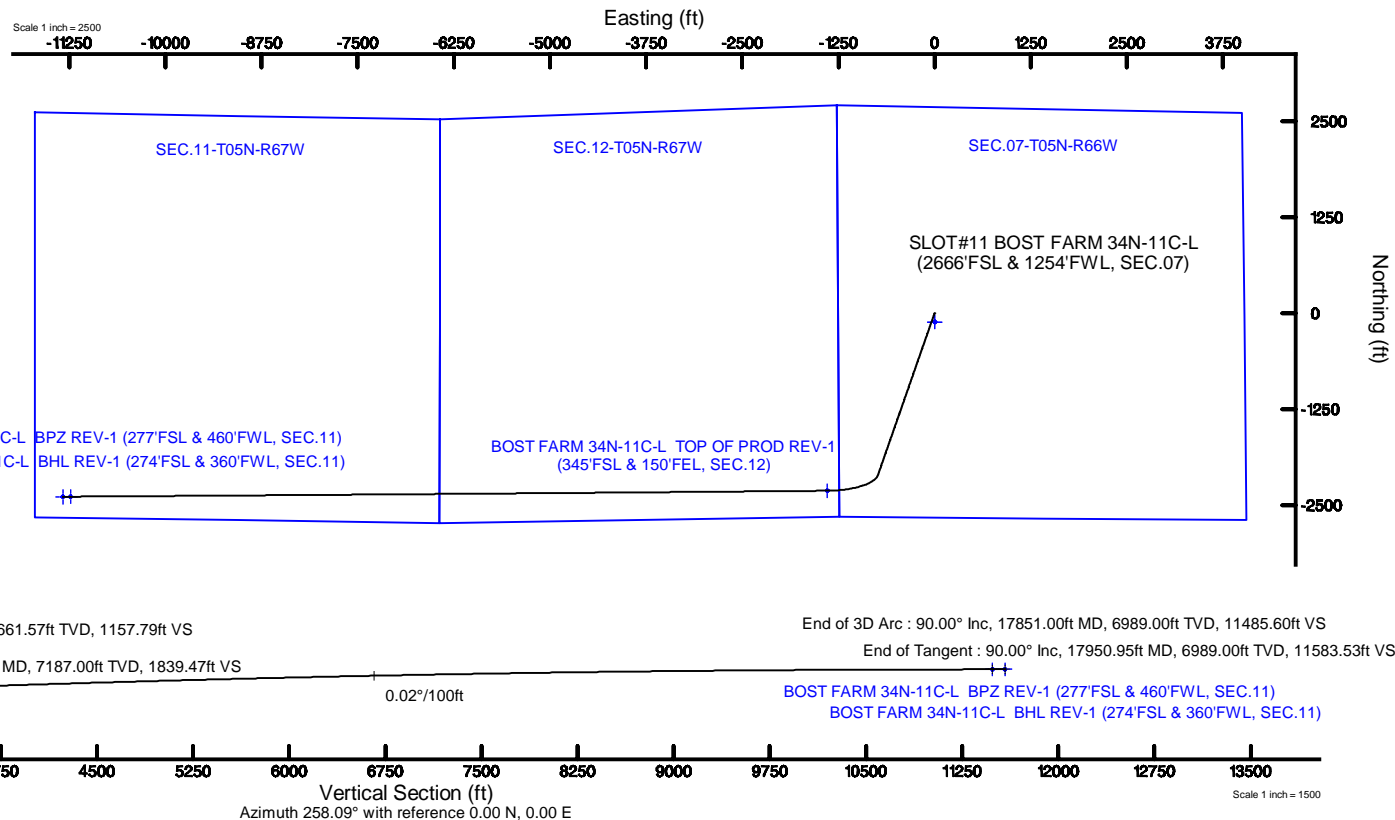


Location:	COLORADO	Slot:	SLOT#11 BOST FARM 34N-11C-L (2666'FSL & 1254'FWL, SEC.07)
Field:	WELD COUNTY (NAD83,TRUE NORTH)	Well:	BOST FARM 34N-11C-L
Facility:	SEC.07-T05N-R66W	Wellbore:	BOST FARM 34N-11C-L PWB
Plot reference wellpath is BOST FARM 34N-11C-L (REV-B.0) PWP		Grid System: NAD83 / Lambert Colorado SP, Northern Zone (501), US feet	
True vertical depths are referenced to PROPETRO 12 (4) (RKB)		North Reference: True north	
Measured depths are referenced to PROPETRO 12 (4) (RKB)		Scale: True distance	
PROPETRO 12 (4) (RKB) to Mean Sea Level: 4876 feet		Depths are in feet	
Mean Sea Level to Mud line (At Slot: SLOT#11 BOST FARM 34N-11C-L (2666'FSL & 1254'FWL, SEC.07): 0 feet		Created by: robale01 on 2018-10-18	
Coordinates are in feet referenced to Slot		Database: WA DENVER	

Facility Name			Grid East (US ft)	Grid North (US ft)	Latitude	Longitude
SEC.07-T05N-R66W			3187161.591	1394309.789	40°24'49.806"N	104°49'40.249"W
Spot	Local N (ft)	Local E (ft)	Grid East (US ft)	Grid North (US ft)	Latitude	Longitude
SLOT#11 BOST FARM 34N-11C-L (2666'FSL & 1254'FWL, SEC.07)	114.03	-4.19	3187156.535	1394423.779	40°24'50.933"N	104°49'40.303"W
PROPETRO 12 (4') (RKB) to Mud line (A Slot: SLOT#11 BOST FARM 34N-11C-L (2666'FSL & 1254'FWL, SEC.07))					4876R	
Mean Sea Level to Mud line (A Slot: SLOT#11 BOST FARM 34N-11C-L (2666'FSL & 1254'FWL, SEC.07))					0R	
PROPETRO 12 (4') (RKB) to Mean Sea Level					4876R	

Start MD (ft)	End MD (ft)	Tool	Model	Log Name/Comment	Wellbore
4.00	1750.00	BHI NavTrak	BHI NavTrak (Standard)		BOST FARM 34N-11C-L PWB
1750.00	17950.95	BHI AutoTrak Curve	BHI AutoTrak Curve (MagCAD+IFR1, Short spacing)		BOST FARM 34N-11C-L PWB



BOST FARM 34N-11C-L (REV-B.0) LAS.las

~VERSION INFORMATION

VERS. 2.0 : CWLS LOG ASCII STANDARD-VERSION 2.0

WRAP. NO : ASCII DATA SECTION CONTAINS ONE ROW PER WELLPATH STATION

~WELL INFORMATION

#MNEM	.UNITS	DATA	:DESCRIPTION
#----	.-----	----	:-----
STRT	.ft	0.00	:START MD
STOP	.ft	17950.95	:STOP MD
STEP	.ft	0.0	:STEP (non-uniform increment)
NULL	.	-999.99	:NULL
COMP	.	SRC ENERGY	:OPERATOR
WELL	.	BOST FARM 34N-11C-L	:WELL
FLD	.	WELD COUNTY (NAD83,TRUE NORTH)	:FIELD
LOC	.	COLORADO	:AREA (aka: Location)
CNTY	.	N/A	:COUNTY
STAT	.	N/A	:STATE
CTRY	.	N/A	:COUNTRY
SRVC	.	Baker Hughes	:CONTRACTOR
DATE	.	09/25/2018	:LOG REV DATE
API	.		:API NUMBER

~OTHER INFORMATION

#Software: WellArchitect(R) Version 5.1

#MNEM	.UNITS	DATA	:DESCRIPTION
#----	.-----	----	:-----
WPTYPE	.	PLANNED WELLPATH	:WELLPATH TYPE
FACILITY	.	SEC.07-T05N-R66W	:FACILITY
SLOT	.	SLOT#11 BOST FARM 34N-11C-L (2666'FSL & 1254'FWL, SEC.07):SLOT	
WELLBORE	.	BOST FARM 34N-11C-L PWB	:WELLBORE
WELLPATH	.	BOST FARM 34N-11C-L (REV-B.0) PWP	:WELLPATH
MDREFPT	.	PROPETRO 12 (4') (RKB)	:MD REFERENCE POINT
TVDREFPT	.	PROPETRO 12 (4') (RKB)	:TVD REFERENCE POINT
LCLREFPT	.	Slot	:LOCAL COORDINATE REFERENCE PT

BOST FARM 34N-11C-L (REV-B.0) LAS.las

VSAZIMUTH.deg	258.09	:VERTICAL SECTION AZIMUTH
VSORIGN .ft	0.00	:VERTICAL SECTION ORIGIN NORTH
VSORIGE .ft	0.00	:VERTICAL SECTION ORIGIN EAST

~CURVE (WELLPATH) INFORMATION

#MNEM	.UNITS	:DESCRIPTION
#----	.-----	:-----
DEPT	.ft	:MEASURED DEPTH
INC	.deg	:INCLINATION
AZI	.deg	:AZIMUTH
TVD	.ft	:TRUE VERTICAL DEPTH
SECT	.ft	:CROSS SECTION (CURTAIN/VERTICAL)
LOCALN	.ft	:LOCAL NORTH
LOCALE	.ft	:LOCAL EAST
LAT	.deg	:LATITUDE
LONG	.deg	:LONGITUDE
DLS	.deg/100ft	:DOGLEG SEVERITY

~ASCII DATA

0.00	0.00	199.24	0.00	0.00	0.00	0.00	40.4141480	-104.8278620	0.00
4.00	0.00	199.24	4.00	0.00	0.00	0.00	40.4141480	-104.8278620	0.00
104.00	0.00	199.24	104.00	0.00	0.00	0.00	40.4141480	-104.8278620	0.00
200.00	0.00	199.24	200.00	0.00	0.00	0.00	40.4141480	-104.8278620	0.00
204.00	0.08	199.24	204.00	0.00	0.00	0.00	40.4141480	-104.8278620	2.00
304.00	2.08	199.24	303.98	0.98	-1.78	-0.62	40.4141431	-104.8278642	2.00
404.00	4.08	199.24	403.83	3.76	-6.85	-2.39	40.4141292	-104.8278706	2.00
504.00	6.08	199.24	503.43	8.34	-15.21	-5.31	40.4141062	-104.8278811	2.00
604.00	8.08	199.24	602.66	14.71	-26.85	-9.37	40.4140743	-104.8278957	2.00
704.00	10.08	199.24	701.40	22.88	-41.75	-14.57	40.4140334	-104.8279143	2.00
804.00	12.08	199.24	799.54	32.82	-59.89	-20.91	40.4139836	-104.8279371	2.00
904.00	14.08	199.24	896.94	44.53	-81.26	-28.37	40.4139250	-104.8279639	2.00
1004.00	16.08	199.24	993.49	57.99	-105.82	-36.94	40.4138575	-104.8279947	2.00
1104.00	18.08	199.24	1089.07	73.19	-133.55	-46.62	40.4137814	-104.8280294	2.00
1204.00	20.08	199.24	1183.57	90.10	-164.41	-57.39	40.4136967	-104.8280681	2.00

BOST FARM 34N-11C-L (REV-B.0) LAS.las

1232.16	20.64	199.24	1209.97	95.17	-173.66	-60.62	40.4136713	-104.8280797	2.00
1304.00	20.64	199.24	1277.20	108.27	-197.57	-68.97	40.4136057	-104.8281097	0.00
1404.00	20.64	199.24	1370.78	126.51	-230.86	-80.59	40.4135143	-104.8281514	0.00
1504.00	20.64	199.24	1464.36	144.75	-264.14	-92.21	40.4134230	-104.8281931	0.00
1604.00	20.64	199.24	1557.94	162.99	-297.43	-103.83	40.4133316	-104.8282349	0.00
1704.00	20.64	199.24	1651.52	181.23	-330.71	-115.45	40.4132402	-104.8282766	0.00
1804.00	20.64	199.24	1745.10	199.47	-364.00	-127.07	40.4131489	-104.8283183	0.00
1904.00	20.64	199.24	1838.68	217.71	-397.28	-138.69	40.4130575	-104.8283600	0.00
2004.00	20.64	199.24	1932.26	235.95	-430.57	-150.30	40.4129661	-104.8284018	0.00
2104.00	20.64	199.24	2025.84	254.19	-463.85	-161.92	40.4128748	-104.8284435	0.00
2204.00	20.64	199.24	2119.42	272.43	-497.14	-173.54	40.4127834	-104.8284852	0.00
2304.00	20.64	199.24	2213.00	290.67	-530.42	-185.16	40.4126920	-104.8285269	0.00
2404.00	20.64	199.24	2306.57	308.92	-563.71	-196.78	40.4126007	-104.8285687	0.00
2504.00	20.64	199.24	2400.15	327.16	-596.99	-208.40	40.4125093	-104.8286104	0.00
2604.00	20.64	199.24	2493.73	345.40	-630.28	-220.02	40.4124180	-104.8286521	0.00
2704.00	20.64	199.24	2587.31	363.64	-663.56	-231.64	40.4123266	-104.8286938	0.00
2804.00	20.64	199.24	2680.89	381.88	-696.85	-243.26	40.4122352	-104.8287356	0.00
2904.00	20.64	199.24	2774.47	400.12	-730.13	-254.88	40.4121439	-104.8287773	0.00
3004.00	20.64	199.24	2868.05	418.36	-763.42	-266.50	40.4120525	-104.8288190	0.00
3104.00	20.64	199.24	2961.63	436.60	-796.70	-278.12	40.4119611	-104.8288607	0.00
3204.00	20.64	199.24	3055.21	454.84	-829.99	-289.74	40.4118698	-104.8289024	0.00
3304.00	20.64	199.24	3148.79	473.08	-863.27	-301.36	40.4117784	-104.8289442	0.00
3404.00	20.64	199.24	3242.37	491.32	-896.56	-312.98	40.4116870	-104.8289859	0.00
3504.00	20.64	199.24	3335.95	509.56	-929.84	-324.59	40.4115957	-104.8290276	0.00
3604.00	20.64	199.24	3429.53	527.80	-963.13	-336.21	40.4115043	-104.8290693	0.00
3704.00	20.64	199.24	3523.11	546.04	-996.41	-347.83	40.4114130	-104.8291111	0.00
3804.00	20.64	199.24	3616.69	564.28	-1029.70	-359.45	40.4113216	-104.8291528	0.00
3904.00	20.64	199.24	3710.27	582.52	-1062.98	-371.07	40.4112302	-104.8291945	0.00
4004.00	20.64	199.24	3803.84	600.76	-1096.27	-382.69	40.4111389	-104.8292362	0.00
4104.00	20.64	199.24	3897.42	619.00	-1129.55	-394.31	40.4110475	-104.8292780	0.00
4204.00	20.64	199.24	3991.00	637.24	-1162.84	-405.93	40.4109561	-104.8293197	0.00
4304.00	20.64	199.24	4084.58	655.48	-1196.12	-417.55	40.4108648	-104.8293614	0.00
4404.00	20.64	199.24	4178.16	673.72	-1229.40	-429.17	40.4107734	-104.8294031	0.00
4504.00	20.64	199.24	4271.74	691.96	-1262.69	-440.79	40.4106820	-104.8294448	0.00

BOST FARM 34N-11C-L (REV-B.0) LAS.las

4604.00	20.64	199.24	4365.32	710.20	-1295.97	-452.41	40.4105907	-104.8294866	0.00
4704.00	20.64	199.24	4458.90	728.45	-1329.26	-464.03	40.4104993	-104.8295283	0.00
4804.00	20.64	199.24	4552.48	746.69	-1362.54	-475.65	40.4104079	-104.8295700	0.00
4904.00	20.64	199.24	4646.06	764.93	-1395.83	-487.27	40.4103166	-104.8296117	0.00
5004.00	20.64	199.24	4739.64	783.17	-1429.11	-498.88	40.4102252	-104.8296535	0.00
5104.00	20.64	199.24	4833.22	801.41	-1462.40	-510.50	40.4101339	-104.8296952	0.00
5204.00	20.64	199.24	4926.80	819.65	-1495.68	-522.12	40.4100425	-104.8297369	0.00
5304.00	20.64	199.24	5020.38	837.89	-1528.97	-533.74	40.4099511	-104.8297786	0.00
5404.00	20.64	199.24	5113.96	856.13	-1562.25	-545.36	40.4098598	-104.8298203	0.00
5504.00	20.64	199.24	5207.54	874.37	-1595.54	-556.98	40.4097684	-104.8298621	0.00
5604.00	20.64	199.24	5301.12	892.61	-1628.82	-568.60	40.4096770	-104.8299038	0.00
5704.00	20.64	199.24	5394.69	910.85	-1662.11	-580.22	40.4095857	-104.8299455	0.00
5804.00	20.64	199.24	5488.27	929.09	-1695.39	-591.84	40.4094943	-104.8299872	0.00
5904.00	20.64	199.24	5581.85	947.33	-1728.68	-603.46	40.4094029	-104.8300289	0.00
6004.00	20.64	199.24	5675.43	965.57	-1761.96	-615.08	40.4093116	-104.8300707	0.00
6104.00	20.64	199.24	5769.01	983.81	-1795.25	-626.70	40.4092202	-104.8301124	0.00
6204.00	20.64	199.24	5862.59	1002.05	-1828.53	-638.32	40.4091288	-104.8301541	0.00
6304.00	20.64	199.24	5956.17	1020.29	-1861.82	-649.94	40.4090375	-104.8301958	0.00
6404.00	20.64	199.24	6049.75	1038.53	-1895.10	-661.56	40.4089461	-104.8302376	0.00
6504.00	20.64	199.24	6143.33	1056.77	-1928.39	-673.17	40.4088548	-104.8302793	0.00
6604.00	20.64	199.24	6236.91	1075.01	-1961.67	-684.79	40.4087634	-104.8303210	0.00
6704.00	20.64	199.24	6330.49	1093.25	-1994.96	-696.41	40.4086720	-104.8303627	0.00
6804.00	20.64	199.24	6424.07	1111.49	-2028.24	-708.03	40.4085807	-104.8304044	0.00
6904.00	20.64	199.24	6517.65	1129.73	-2061.53	-719.65	40.4084893	-104.8304461	0.00
7004.00	20.64	199.24	6611.23	1147.97	-2094.81	-731.27	40.4083979	-104.8304879	0.00
7057.79	20.64	199.24	6661.57	1157.79	-2112.72	-737.52	40.4083488	-104.8305103	0.00
7104.00	22.35	209.61	6704.57	1167.83	-2128.05	-744.55	40.4083067	-104.8305355	9.00
7204.00	27.80	226.67	6795.23	1200.40	-2160.65	-770.96	40.4082172	-104.8306304	9.00
7304.00	34.65	237.99	6880.77	1247.09	-2191.79	-812.11	40.4081317	-104.8307781	9.00
7404.00	42.24	245.81	6959.08	1306.76	-2220.69	-866.99	40.4080524	-104.8309752	9.00
7504.00	50.22	251.59	7028.23	1377.93	-2246.66	-934.25	40.4079811	-104.8312167	9.00
7604.00	58.43	256.15	7086.52	1458.85	-2269.04	-1012.23	40.4079197	-104.8314967	9.00
7704.00	66.77	259.96	7132.51	1547.52	-2287.28	-1099.01	40.4078696	-104.8318083	9.00
7804.00	75.19	263.32	7165.08	1641.78	-2300.95	-1192.45	40.4078321	-104.8321439	9.00

BOST FARM 34N-11C-L (REV-B.0) LAS.las

7904.00	83.66	266.42	7183.42	1739.29	-2309.70	-1290.26	40.4078080	-104.8324951	9.00
8004.00	92.15	269.42	7187.07	1837.65	-2313.31	-1390.03	40.4077981	-104.8328533	9.00
8005.86	92.31	269.48	7187.00	1839.47	-2313.33	-1391.89	40.4077981	-104.8328600	9.00
8104.00	92.28	269.48	7183.07	1935.60	-2314.22	-1489.94	40.4077956	-104.8332121	0.02
8204.00	92.26	269.48	7179.11	2033.55	-2315.12	-1589.86	40.4077931	-104.8335709	0.02
8304.00	92.24	269.48	7175.19	2131.50	-2316.02	-1689.78	40.4077906	-104.8339297	0.02
8404.00	92.21	269.49	7171.31	2229.46	-2316.92	-1789.70	40.4077881	-104.8342885	0.02
8504.00	92.19	269.49	7167.47	2327.41	-2317.82	-1889.62	40.4077856	-104.8346473	0.02
8604.00	92.17	269.49	7163.67	2425.37	-2318.71	-1989.55	40.4077832	-104.8350061	0.02
8704.00	92.14	269.49	7159.92	2523.33	-2319.60	-2089.47	40.4077807	-104.8353649	0.02
8804.00	92.12	269.49	7156.20	2621.28	-2320.49	-2189.40	40.4077782	-104.8357237	0.02
8904.00	92.10	269.49	7152.53	2719.24	-2321.38	-2289.33	40.4077758	-104.8360825	0.02
9004.00	92.07	269.49	7148.89	2817.20	-2322.26	-2389.26	40.4077733	-104.8364413	0.02
9104.00	92.05	269.50	7145.30	2915.16	-2323.14	-2489.19	40.4077709	-104.8368002	0.02
9204.00	92.02	269.50	7141.74	3013.13	-2324.02	-2589.12	40.4077684	-104.8371590	0.02
9304.00	92.00	269.50	7138.23	3111.09	-2324.90	-2689.06	40.4077660	-104.8375179	0.02
9404.00	91.98	269.50	7134.76	3209.05	-2325.77	-2788.99	40.4077636	-104.8378767	0.02
9504.00	91.95	269.50	7131.33	3307.02	-2326.65	-2888.93	40.4077611	-104.8382356	0.02
9604.00	91.93	269.50	7127.94	3404.98	-2327.52	-2988.87	40.4077587	-104.8385944	0.02
9704.00	91.91	269.50	7124.59	3502.95	-2328.38	-3088.81	40.4077563	-104.8389533	0.02
9804.00	91.88	269.51	7121.28	3600.92	-2329.25	-3188.75	40.4077539	-104.8393122	0.02
9904.00	91.86	269.51	7118.02	3698.88	-2330.11	-3288.69	40.4077515	-104.8396710	0.02
10004.00	91.84	269.51	7114.79	3796.85	-2330.97	-3388.64	40.4077491	-104.8400299	0.02
10104.00	91.81	269.51	7111.61	3894.82	-2331.82	-3488.58	40.4077467	-104.8403888	0.02
10204.00	91.79	269.51	7108.46	3992.79	-2332.68	-3588.53	40.4077443	-104.8407477	0.02
10304.00	91.77	269.51	7105.36	4090.76	-2333.53	-3688.48	40.4077419	-104.8411066	0.02
10404.00	91.74	269.51	7102.29	4188.73	-2334.38	-3788.43	40.4077396	-104.8414655	0.02
10504.00	91.72	269.52	7099.27	4286.71	-2335.23	-3888.38	40.4077372	-104.8418244	0.02
10604.00	91.70	269.52	7096.29	4384.68	-2336.07	-3988.33	40.4077348	-104.8421833	0.02
10704.00	91.67	269.52	7093.35	4482.65	-2336.91	-4088.29	40.4077325	-104.8425422	0.02
10804.00	91.65	269.52	7090.45	4580.63	-2337.75	-4188.24	40.4077301	-104.8429011	0.02
10904.00	91.63	269.52	7087.59	4678.60	-2338.59	-4288.20	40.4077278	-104.8432600	0.02
11004.00	91.60	269.52	7084.78	4776.58	-2339.42	-4388.15	40.4077255	-104.8436189	0.02
11104.00	91.58	269.52	7082.00	4874.56	-2340.26	-4488.11	40.4077231	-104.8439779	0.02

BOST FARM 34N-11C-L (REV-B.0) LAS.las

11204.00	91.56	269.52	7079.26	4972.53	-2341.09	-4588.07	40.4077208	-104.8443368	0.02
11304.00	91.53	269.53	7076.57	5070.51	-2341.91	-4688.03	40.4077185	-104.8446957	0.02
11404.00	91.51	269.53	7073.91	5168.49	-2342.74	-4787.99	40.4077162	-104.8450547	0.02
11504.00	91.49	269.53	7071.30	5266.47	-2343.56	-4887.95	40.4077138	-104.8454136	0.02
11604.00	91.46	269.53	7068.73	5364.45	-2344.38	-4987.92	40.4077115	-104.8457726	0.02
11704.00	91.44	269.53	7066.19	5462.43	-2345.20	-5087.88	40.4077092	-104.8461315	0.02
11804.00	91.42	269.53	7063.70	5560.41	-2346.01	-5187.85	40.4077069	-104.8464905	0.02
11904.00	91.39	269.54	7061.25	5658.39	-2346.82	-5287.81	40.4077047	-104.8468494	0.02
12004.00	91.37	269.54	7058.84	5756.37	-2347.63	-5387.78	40.4077024	-104.8472084	0.02
12104.00	91.35	269.54	7056.47	5854.35	-2348.44	-5487.75	40.4077001	-104.8475674	0.02
12204.00	91.32	269.54	7054.15	5952.34	-2349.25	-5587.72	40.4076978	-104.8479263	0.02
12304.00	91.30	269.54	7051.86	6050.32	-2350.05	-5687.69	40.4076956	-104.8482853	0.02
12404.00	91.28	269.54	7049.61	6148.30	-2350.85	-5787.66	40.4076933	-104.8486443	0.02
12504.00	91.25	269.54	7047.41	6246.29	-2351.64	-5887.63	40.4076911	-104.8490033	0.02
12604.00	91.23	269.55	7045.25	6344.27	-2352.44	-5987.61	40.4076888	-104.8493622	0.02
12704.00	91.21	269.55	7043.12	6442.25	-2353.23	-6087.58	40.4076866	-104.8497212	0.02
12804.00	91.18	269.55	7041.04	6540.24	-2354.02	-6187.56	40.4076843	-104.8500802	0.02
12904.00	91.16	269.55	7039.00	6638.22	-2354.81	-6287.53	40.4076821	-104.8504392	0.02
13004.00	91.14	269.55	7037.00	6736.21	-2355.59	-6387.51	40.4076799	-104.8507982	0.02
13104.00	91.11	269.55	7035.04	6834.19	-2356.38	-6487.49	40.4076777	-104.8511572	0.02
13204.00	91.09	269.55	7033.12	6932.18	-2357.16	-6587.47	40.4076754	-104.8515162	0.02
13304.00	91.07	269.56	7031.24	7030.17	-2357.93	-6687.45	40.4076732	-104.8518752	0.02
13404.00	91.04	269.56	7029.40	7128.15	-2358.71	-6787.43	40.4076710	-104.8522342	0.02
13504.00	91.02	269.56	7027.61	7226.14	-2359.48	-6887.41	40.4076688	-104.8525932	0.02
13604.00	90.99	269.56	7025.85	7324.13	-2360.25	-6987.39	40.4076666	-104.8529522	0.02
13704.00	90.97	269.56	7024.13	7422.11	-2361.02	-7087.37	40.4076645	-104.8533113	0.02
13804.00	90.95	269.56	7022.46	7520.10	-2361.78	-7187.35	40.4076623	-104.8536703	0.02
13904.00	90.92	269.56	7020.83	7618.09	-2362.55	-7287.34	40.4076601	-104.8540293	0.02
14004.00	90.90	269.57	7019.24	7716.08	-2363.31	-7387.32	40.4076579	-104.8543883	0.02
14104.00	90.88	269.57	7017.68	7814.06	-2364.06	-7487.31	40.4076558	-104.8547473	0.02
14204.00	90.85	269.57	7016.17	7912.05	-2364.82	-7587.29	40.4076536	-104.8551064	0.02
14304.00	90.83	269.57	7014.70	8010.04	-2365.57	-7687.28	40.4076515	-104.8554654	0.02
14404.00	90.81	269.57	7013.27	8108.03	-2366.32	-7787.27	40.4076493	-104.8558244	0.02
14504.00	90.78	269.57	7011.89	8206.01	-2367.07	-7887.25	40.4076472	-104.8561835	0.02

BOST FARM 34N-11C-L (REV-B.0) LAS.las

14604.00	90.76	269.57	7010.54	8304.00	-2367.81	-7987.24	40.4076451	-104.8565425	0.02
14704.00	90.74	269.58	7009.23	8401.99	-2368.56	-8087.23	40.4076429	-104.8569015	0.02
14804.00	90.71	269.58	7007.97	8499.98	-2369.30	-8187.22	40.4076408	-104.8572606	0.02
14904.00	90.69	269.58	7006.74	8597.97	-2370.03	-8287.21	40.4076387	-104.8576196	0.02
15004.00	90.67	269.58	7005.56	8695.96	-2370.77	-8387.20	40.4076366	-104.8579787	0.02
15104.00	90.64	269.58	7004.42	8793.94	-2371.50	-8487.19	40.4076345	-104.8583377	0.02
15204.00	90.62	269.58	7003.31	8891.93	-2372.23	-8587.18	40.4076324	-104.8586967	0.02
15304.00	90.60	269.58	7002.25	8989.92	-2372.96	-8687.17	40.4076303	-104.8590558	0.02
15404.00	90.57	269.58	7001.23	9087.91	-2373.69	-8787.17	40.4076282	-104.8594148	0.02
15504.00	90.55	269.59	7000.25	9185.90	-2374.41	-8887.16	40.4076261	-104.8597739	0.02
15604.00	90.53	269.59	6999.32	9283.88	-2375.13	-8987.15	40.4076240	-104.8601329	0.02
15704.00	90.50	269.59	6998.42	9381.87	-2375.85	-9087.14	40.4076220	-104.8604920	0.02
15804.00	90.48	269.59	6997.56	9479.86	-2376.56	-9187.14	40.4076199	-104.8608511	0.02
15904.00	90.46	269.59	6996.74	9577.85	-2377.27	-9287.13	40.4076178	-104.8612101	0.02
16004.00	90.43	269.59	6995.97	9675.83	-2377.98	-9387.13	40.4076158	-104.8615692	0.02
16104.00	90.41	269.60	6995.24	9773.82	-2378.69	-9487.12	40.4076137	-104.8619282	0.02
16204.00	90.39	269.60	6994.54	9871.81	-2379.40	-9587.12	40.4076117	-104.8622873	0.02
16304.00	90.36	269.60	6993.89	9969.79	-2380.10	-9687.11	40.4076097	-104.8626464	0.02
16404.00	90.34	269.60	6993.28	10067.78	-2380.80	-9787.11	40.4076076	-104.8630054	0.02
16504.00	90.32	269.60	6992.71	10165.77	-2381.50	-9887.10	40.4076056	-104.8633645	0.02
16604.00	90.29	269.60	6992.18	10263.75	-2382.19	-9987.10	40.4076036	-104.8637235	0.02
16704.00	90.27	269.60	6991.69	10361.74	-2382.89	-10087.10	40.4076016	-104.8640826	0.02
16804.00	90.25	269.61	6991.24	10459.72	-2383.58	-10187.09	40.4075996	-104.8644417	0.02
16904.00	90.22	269.61	6990.83	10557.71	-2384.26	-10287.09	40.4075976	-104.8648007	0.02
17004.00	90.20	269.61	6990.47	10655.69	-2384.95	-10387.09	40.4075956	-104.8651598	0.02
17104.00	90.18	269.61	6990.14	10753.67	-2385.63	-10487.08	40.4075936	-104.8655189	0.02
17204.00	90.15	269.61	6989.86	10851.66	-2386.31	-10587.08	40.4075916	-104.8658779	0.02
17304.00	90.13	269.61	6989.61	10949.64	-2386.99	-10687.08	40.4075896	-104.8662370	0.02
17404.00	90.11	269.61	6989.41	11047.62	-2387.67	-10787.08	40.4075876	-104.8665961	0.02
17504.00	90.08	269.62	6989.25	11145.61	-2388.34	-10887.07	40.4075857	-104.8669551	0.02
17604.00	90.06	269.62	6989.12	11243.59	-2389.01	-10987.07	40.4075837	-104.8673142	0.02
17704.00	90.03	269.62	6989.04	11341.57	-2389.68	-11087.07	40.4075818	-104.8676733	0.02
17804.00	90.01	269.62	6989.00	11439.55	-2390.34	-11187.07	40.4075798	-104.8680324	0.02
17851.00	90.00	269.62	6989.00	11485.60	-2390.66	-11234.07	40.4075789	-104.8682011	0.02

BOST FARM 34N-11C-L (REV-B.0) LAS.las									
17904.00	90.00	269.62	6989.00	11537.53	-2391.01	-11287.07	40.4075779	-104.8683914	0.00
17950.95	90.00	269.62	6989.00	11583.53	-2391.32	-11334.01	40.4075769	-104.8685600	0.00



Planned Wellpath Report

BOST FARM 34N-11C-L (REV-B.0) PWP

Page 1 of 10



REFERENCE WELLPATH IDENTIFICATION

Operator	SRC ENERGY	Slot	SLOT#11 BOST FARM 34N-11C-L (2666'FSL & 1254'FWL, SEC.07)
Area	COLORADO	Well	BOST FARM 34N-11C-L
Field	WELD COUNTY (NAD83,TRUE NORTH)	Wellbore	BOST FARM 34N-11C-L PWB
Facility	SEC.07-T05N-R66W		

REPORT SETUP INFORMATION

Projection System	NAD83 / Lambert Colorado SP, Northern Zone (501), US feet	Software System	WellArchitect® 5.1
North Reference	True	User	Bushjamh
Scale	0.999961	Report Generated	10/18/2018 at 6:44:28 PM
Convergence at slot	0.43° East	Database/Source file	Denver/BOST FARM 34N-11C-L (REV-B.0) PWP PR.xml

WELLPATH LOCATION

	Local coordinates		Grid coordinates		Geographic coordinates	
	North[ft]	East[ft]	Easting[US ft]	Northing[US ft]	Latitude	Longitude
Slot Location	114.03	-4.19	3187156.54	1394423.78	40°24'50.933"N	104°49'40.303"W
Facility Reference Pt			3187161.59	1394309.79	40°24'49.806"N	104°49'40.249"W
Field Reference Pt			3171284.48	1426358.81	40°30'07.643"N	104°53'02.634"W

WELLPATH DATUM

Calculation method	Minimum curvature	PROPETRO 12 (4') (RKB) to Facility Vertical Datum	4876.00ft
Horizontal Reference Pt	Slot	PROPETRO 12 (4') (RKB) to Mean Sea Level	4876.00ft
Vertical Reference Pt	PROPETRO 12 (4') (RKB)	PROPETRO 12 (4') (RKB) to Mud Line at Slot (SLOT#11 BOST FARM 34N-11C-L (2666'FSL & 1254'FWL, SEC.07))	4876.00ft
MD Reference Pt	PROPETRO 12 (4') (RKB)	Section Origin	N 0.00, E 0.00 ft
Field Vertical Reference	Mean Sea Level	Section Azimuth	258.09°



SRC ENERGY

Planned Wellpath Report

BOST FARM 34N-11C-L (REV-B.0) PWP

Page 2 of 10

**BAKER
HUGHES**
a GE company



REFERENCE WELLPATH IDENTIFICATION

Operator	SRC ENERGY	Slot	SLOT#11 BOST FARM 34N-11C-L (2666'FSL & 1254'FWL, SEC.07)
Area	COLORADO	Well	BOST FARM 34N-11C-L
Field	WELD COUNTY (NAD83,TRUE NORTH)	Wellbore	BOST FARM 34N-11C-L PWB
Facility	SEC.07-T05N-R66W		

WELLPATH DATA (187 stations) † = interpolated/extrapolated station

MD [ft]	Inclination [°]	Azimuth [°]	TVD [ft]	Vert Sect [ft]	North [ft]	East [ft]	Latitude	Longitude	DLS [°/100ft]	Comments
0.00†	0.000	199.243	0.00	0.00	0.00	0.00	40°24'50.933"N	104°49'40.303"W	0.00	
4.00	0.000	199.243	4.00	0.00	0.00	0.00	40°24'50.933"N	104°49'40.303"W	0.00	Tie On
104.00†	0.000	199.243	104.00	0.00	0.00	0.00	40°24'50.933"N	104°49'40.303"W	0.00	
200.00	0.000	199.243	200.00	0.00	0.00	0.00	40°24'50.933"N	104°49'40.303"W	0.00	End of Tangent
204.00†	0.080	199.243	204.00	0.00	0.00	0.00	40°24'50.933"N	104°49'40.303"W	2.00	
304.00†	2.080	199.243	303.98	0.98	-1.78	-0.62	40°24'50.915"N	104°49'40.311"W	2.00	
404.00†	4.080	199.243	403.83	3.76	-6.85	-2.39	40°24'50.865"N	104°49'40.334"W	2.00	
504.00†	6.080	199.243	503.43	8.34	-15.21	-5.31	40°24'50.782"N	104°49'40.372"W	2.00	
604.00†	8.080	199.243	602.66	14.71	-26.85	-9.37	40°24'50.667"N	104°49'40.424"W	2.00	
704.00†	10.080	199.243	701.40	22.88	-41.75	-14.57	40°24'50.520"N	104°49'40.492"W	2.00	
804.00†	12.080	199.243	799.54	32.82	-59.89	-20.91	40°24'50.341"N	104°49'40.573"W	2.00	
904.00†	14.080	199.243	896.94	44.53	-81.26	-28.37	40°24'50.130"N	104°49'40.670"W	2.00	
1004.00†	16.080	199.243	993.49	57.99	-105.82	-36.94	40°24'49.887"N	104°49'40.781"W	2.00	
1104.00†	18.080	199.243	1089.07	73.19	-133.55	-46.62	40°24'49.613"N	104°49'40.906"W	2.00	
1204.00†	20.080	199.243	1183.57	90.10	-164.41	-57.39	40°24'49.308"N	104°49'41.045"W	2.00	
1232.16	20.643	199.243	1209.97	95.17	-173.66	-60.62	40°24'49.217"N	104°49'41.087"W	2.00	End of Build
1304.00†	20.643	199.243	1277.20	108.27	-197.57	-68.97	40°24'48.980"N	104°49'41.195"W	0.00	
1404.00†	20.643	199.243	1370.78	126.51	-230.86	-80.59	40°24'48.652"N	104°49'41.345"W	0.00	
1504.00†	20.643	199.243	1464.36	144.75	-264.14	-92.21	40°24'48.323"N	104°49'41.495"W	0.00	
1604.00†	20.643	199.243	1557.94	162.99	-297.43	-103.83	40°24'47.994"N	104°49'41.645"W	0.00	
1704.00†	20.643	199.243	1651.52	181.23	-330.71	-115.45	40°24'47.665"N	104°49'41.796"W	0.00	
1804.00†	20.643	199.243	1745.10	199.47	-364.00	-127.07	40°24'47.336"N	104°49'41.946"W	0.00	
1904.00†	20.643	199.243	1838.68	217.71	-397.28	-138.69	40°24'47.007"N	104°49'42.096"W	0.00	
2004.00†	20.643	199.243	1932.26	235.95	-430.57	-150.30	40°24'46.678"N	104°49'42.246"W	0.00	
2104.00†	20.643	199.243	2025.84	254.19	-463.85	-161.92	40°24'46.349"N	104°49'42.397"W	0.00	
2204.00†	20.643	199.243	2119.42	272.43	-497.14	-173.54	40°24'46.020"N	104°49'42.547"W	0.00	
2304.00†	20.643	199.243	2213.00	290.67	-530.42	-185.16	40°24'45.691"N	104°49'42.697"W	0.00	
2404.00†	20.643	199.243	2306.57	308.92	-563.71	-196.78	40°24'45.362"N	104°49'42.847"W	0.00	
2504.00†	20.643	199.243	2400.15	327.16	-596.99	-208.40	40°24'45.034"N	104°49'42.997"W	0.00	
2604.00†	20.643	199.243	2493.73	345.40	-630.28	-220.02	40°24'44.705"N	104°49'43.148"W	0.00	



Planned Wellpath Report

BOST FARM 34N-11C-L (REV-B.0) PWP

Page 3 of 10



REFERENCE WELLPATH IDENTIFICATION			
Operator	SRC ENERGY	Slot	SLOT#11 BOST FARM 34N-11C-L (2666'FSL & 1254'FWL, SEC.07)
Area	COLORADO	Well	BOST FARM 34N-11C-L
Field	WELD COUNTY (NAD83,TRUE NORTH)	Wellbore	BOST FARM 34N-11C-L PWB
Facility	SEC.07-T05N-R66W		

WELLPATH DATA (187 stations) † = interpolated/extrapolated station										
MD [ft]	Inclination [°]	Azimuth [°]	TVD [ft]	Vert Sect [ft]	North [ft]	East [ft]	Latitude	Longitude	DLS [°/100ft]	Comments
2704.00†	20.643	199.243	2587.31	363.64	-663.56	-231.64	40°24'44.376"N	104°49'43.298"W	0.00	
2804.00†	20.643	199.243	2680.89	381.88	-696.85	-243.26	40°24'44.047"N	104°49'43.448"W	0.00	
2904.00†	20.643	199.243	2774.47	400.12	-730.13	-254.88	40°24'43.718"N	104°49'43.598"W	0.00	
3004.00†	20.643	199.243	2868.05	418.36	-763.42	-266.50	40°24'43.389"N	104°49'43.748"W	0.00	
3104.00†	20.643	199.243	2961.63	436.60	-796.70	-278.12	40°24'43.060"N	104°49'43.899"W	0.00	
3204.00†	20.643	199.243	3055.21	454.84	-829.99	-289.74	40°24'42.731"N	104°49'44.049"W	0.00	
3304.00†	20.643	199.243	3148.79	473.08	-863.27	-301.36	40°24'42.402"N	104°49'44.199"W	0.00	
3404.00†	20.643	199.243	3242.37	491.32	-896.56	-312.98	40°24'42.073"N	104°49'44.349"W	0.00	
3504.00†	20.643	199.243	3335.95	509.56	-929.84	-324.59	40°24'41.744"N	104°49'44.499"W	0.00	
3604.00†	20.643	199.243	3429.53	527.80	-963.13	-336.21	40°24'41.416"N	104°49'44.650"W	0.00	
3704.00†	20.643	199.243	3523.11	546.04	-996.41	-347.83	40°24'41.087"N	104°49'44.800"W	0.00	
3804.00†	20.643	199.243	3616.69	564.28	-1029.70	-359.45	40°24'40.758"N	104°49'44.950"W	0.00	
3904.00†	20.643	199.243	3710.27	582.52	-1062.98	-371.07	40°24'40.429"N	104°49'45.100"W	0.00	
4004.00†	20.643	199.243	3803.84	600.76	-1096.27	-382.69	40°24'40.100"N	104°49'45.250"W	0.00	
4104.00†	20.643	199.243	3897.42	619.00	-1129.55	-394.31	40°24'39.771"N	104°49'45.401"W	0.00	
4204.00†	20.643	199.243	3991.00	637.24	-1162.84	-405.93	40°24'39.442"N	104°49'45.551"W	0.00	
4304.00†	20.643	199.243	4084.58	655.48	-1196.12	-417.55	40°24'39.113"N	104°49'45.701"W	0.00	
4404.00†	20.643	199.243	4178.16	673.72	-1229.40	-429.17	40°24'38.784"N	104°49'45.851"W	0.00	
4504.00†	20.643	199.243	4271.74	691.96	-1262.69	-440.79	40°24'38.455"N	104°49'46.001"W	0.00	
4604.00†	20.643	199.243	4365.32	710.20	-1295.97	-452.41	40°24'38.126"N	104°49'46.152"W	0.00	
4704.00†	20.643	199.243	4458.90	728.45	-1329.26	-464.03	40°24'37.798"N	104°49'46.302"W	0.00	
4804.00†	20.643	199.243	4552.48	746.69	-1362.54	-475.65	40°24'37.469"N	104°49'46.452"W	0.00	
4904.00†	20.643	199.243	4646.06	764.93	-1395.83	-487.27	40°24'37.140"N	104°49'46.602"W	0.00	
5004.00†	20.643	199.243	4739.64	783.17	-1429.11	-498.88	40°24'36.811"N	104°49'46.752"W	0.00	
5104.00†	20.643	199.243	4833.22	801.41	-1462.40	-510.50	40°24'36.482"N	104°49'46.903"W	0.00	
5204.00†	20.643	199.243	4926.80	819.65	-1495.68	-522.12	40°24'36.153"N	104°49'47.053"W	0.00	
5304.00†	20.643	199.243	5020.38	837.89	-1528.97	-533.74	40°24'35.824"N	104°49'47.203"W	0.00	
5404.00†	20.643	199.243	5113.96	856.13	-1562.25	-545.36	40°24'35.495"N	104°49'47.353"W	0.00	
5504.00†	20.643	199.243	5207.54	874.37	-1595.54	-556.98	40°24'35.166"N	104°49'47.503"W	0.00	
5604.00†	20.643	199.243	5301.12	892.61	-1628.82	-568.60	40°24'34.837"N	104°49'47.654"W	0.00	



SRC ENERGY

Planned Wellpath Report

BOST FARM 34N-11C-L (REV-B.0) PWP

Page 4 of 10

**BAKER
HUGHES**
a GE company



REFERENCE WELLPATH IDENTIFICATION

Operator	SRC ENERGY	Slot	SLOT#11 BOST FARM 34N-11C-L (2666'FSL & 1254'FWL, SEC.07)
Area	COLORADO	Well	BOST FARM 34N-11C-L
Field	WELD COUNTY (NAD83,TRUE NORTH)	Wellbore	BOST FARM 34N-11C-L PWB
Facility	SEC.07-T05N-R66W		

WELLPATH DATA (187 stations) † = interpolated/extrapolated station

MD [ft]	Inclination [°]	Azimuth [°]	TVD [ft]	Vert Sect [ft]	North [ft]	East [ft]	Latitude	Longitude	DLS [°/100ft]	Comments
5704.00†	20.643	199.243	5394.69	910.85	-1662.11	-580.22	40°24'34.508"N	104°49'47.804"W	0.00	
5804.00†	20.643	199.243	5488.27	929.09	-1695.39	-591.84	40°24'34.179"N	104°49'47.954"W	0.00	
5904.00†	20.643	199.243	5581.85	947.33	-1728.68	-603.46	40°24'33.851"N	104°49'48.104"W	0.00	
6004.00†	20.643	199.243	5675.43	965.57	-1761.96	-615.08	40°24'33.522"N	104°49'48.254"W	0.00	
6104.00†	20.643	199.243	5769.01	983.81	-1795.25	-626.70	40°24'33.193"N	104°49'48.405"W	0.00	
6204.00†	20.643	199.243	5862.59	1002.05	-1828.53	-638.32	40°24'32.864"N	104°49'48.555"W	0.00	
6304.00†	20.643	199.243	5956.17	1020.29	-1861.82	-649.94	40°24'32.535"N	104°49'48.705"W	0.00	
6404.00†	20.643	199.243	6049.75	1038.53	-1895.10	-661.56	40°24'32.206"N	104°49'48.855"W	0.00	
6504.00†	20.643	199.243	6143.33	1056.77	-1928.39	-673.17	40°24'31.877"N	104°49'49.005"W	0.00	
6604.00†	20.643	199.243	6236.91	1075.01	-1961.67	-684.79	40°24'31.548"N	104°49'49.156"W	0.00	
6704.00†	20.643	199.243	6330.49	1093.25	-1994.96	-696.41	40°24'31.219"N	104°49'49.306"W	0.00	
6804.00†	20.643	199.243	6424.07	1111.49	-2028.24	-708.03	40°24'30.890"N	104°49'49.456"W	0.00	
6904.00†	20.643	199.243	6517.65	1129.73	-2061.53	-719.65	40°24'30.561"N	104°49'49.606"W	0.00	
7004.00†	20.643	199.243	6611.23	1147.97	-2094.81	-731.27	40°24'30.233"N	104°49'49.756"W	0.00	
7057.79	20.643	199.243	6661.57	1157.79	-2112.72	-737.52	40°24'30.056"N	104°49'49.837"W	0.00	End of Tangent
7104.00†	22.353	209.607	6704.57	1167.83	-2128.05	-744.55	40°24'29.904"N	104°49'49.928"W	9.00	
7204.00†	27.795	226.669	6795.23	1200.40	-2160.65	-770.96	40°24'29.582"N	104°49'50.269"W	9.00	
7304.00†	34.654	237.986	6880.77	1247.09	-2191.79	-812.11	40°24'29.274"N	104°49'50.801"W	9.00	
7404.00†	42.240	245.810	6959.08	1306.76	-2220.69	-866.99	40°24'28.989"N	104°49'51.511"W	9.00	
7504.00†	50.221	251.590	7028.23	1377.93	-2246.66	-934.25	40°24'28.732"N	104°49'52.380"W	9.00	
7604.00†	58.428	256.148	7086.52	1458.85	-2269.04	-1012.23	40°24'28.511"N	104°49'53.388"W	9.00	
7704.00†	66.770	259.959	7132.51	1547.52	-2287.28	-1099.01	40°24'28.330"N	104°49'54.510"W	9.00	
7804.00†	75.193	263.316	7165.08	1641.78	-2300.95	-1192.45	40°24'28.195"N	104°49'55.718"W	9.00	
7904.00†	83.661	266.421	7183.42	1739.29	-2309.70	-1290.26	40°24'28.109"N	104°49'56.982"W	9.00	
8004.00†	92.147	269.424	7187.07	1837.65	-2313.31	-1390.03	40°24'28.073"N	104°49'58.272"W	9.00	
8005.86	92.305	269.480	7187.00†	1839.47	-2313.33	-1391.89	40°24'28.073"N	104°49'58.296"W	9.00	End of 3D Arc
8104.00†	92.282	269.481	7183.07	1935.60	-2314.22	-1489.94	40°24'28.064"N	104°49'59.564"W	0.02	
8204.00†	92.259	269.482	7179.11	2033.55	-2315.12	-1589.86	40°24'28.055"N	104°50'00.855"W	0.02	
8304.00†	92.235	269.484	7175.19	2131.50	-2316.02	-1689.78	40°24'28.046"N	104°50'02.147"W	0.02	
8404.00†	92.212	269.485	7171.31	2229.46	-2316.92	-1789.70	40°24'28.037"N	104°50'03.438"W	0.02	



SRC ENERGY

Planned Wellpath Report

BOST FARM 34N-11C-L (REV-B.0) PWP

Page 5 of 10

**BAKER
HUGHES**
a GE company



REFERENCE WELLPATH IDENTIFICATION

Operator	SRC ENERGY	Slot	SLOT#11 BOST FARM 34N-11C-L (2666'FSL & 1254'FWL, SEC.07)
Area	COLORADO	Well	BOST FARM 34N-11C-L
Field	WELD COUNTY (NAD83,TRUE NORTH)	Wellbore	BOST FARM 34N-11C-L PWB
Facility	SEC.07-T05N-R66W		

WELLPATH DATA (187 stations) † = interpolated/extrapolated station

MD [ft]	Inclination [°]	Azimuth [°]	TVD [ft]	Vert Sect [ft]	North [ft]	East [ft]	Latitude	Longitude	DLS [°/100ft]	Comments
8504.00†	92.188	269.487	7167.47	2327.41	-2317.82	-1889.62	40°24'28.028"N	104°50'04.730"W	0.02	
8604.00†	92.165	269.488	7163.67	2425.37	-2318.71	-1989.55	40°24'28.019"N	104°50'06.022"W	0.02	
8704.00†	92.141	269.490	7159.92	2523.33	-2319.60	-2089.47	40°24'28.010"N	104°50'07.314"W	0.02	
8804.00†	92.118	269.491	7156.20	2621.28	-2320.49	-2189.40	40°24'28.002"N	104°50'08.605"W	0.02	
8904.00†	92.095	269.492	7152.53	2719.24	-2321.38	-2289.33	40°24'27.993"N	104°50'09.897"W	0.02	
9004.00†	92.071	269.494	7148.89	2817.20	-2322.26	-2389.26	40°24'27.984"N	104°50'11.189"W	0.02	
9104.00†	92.048	269.495	7145.30	2915.16	-2323.14	-2489.19	40°24'27.975"N	104°50'12.481"W	0.02	
9204.00†	92.024	269.497	7141.74	3013.13	-2324.02	-2589.12	40°24'27.966"N	104°50'13.772"W	0.02	
9304.00†	92.001	269.498	7138.23	3111.09	-2324.90	-2689.06	40°24'27.958"N	104°50'15.064"W	0.02	
9404.00†	91.978	269.500	7134.76	3209.05	-2325.77	-2788.99	40°24'27.949"N	104°50'16.356"W	0.02	
9504.00†	91.954	269.501	7131.33	3307.02	-2326.65	-2888.93	40°24'27.940"N	104°50'17.648"W	0.02	
9604.00†	91.931	269.502	7127.94	3404.98	-2327.52	-2988.87	40°24'27.931"N	104°50'18.940"W	0.02	
9704.00†	91.907	269.504	7124.59	3502.95	-2328.38	-3088.81	40°24'27.923"N	104°50'20.232"W	0.02	
9804.00†	91.884	269.505	7121.28	3600.92	-2329.25	-3188.75	40°24'27.914"N	104°50'21.524"W	0.02	
9904.00†	91.861	269.507	7118.02	3698.88	-2330.11	-3288.69	40°24'27.905"N	104°50'22.816"W	0.02	
10004.00†	91.837	269.508	7114.79	3796.85	-2330.97	-3388.64	40°24'27.897"N	104°50'24.108"W	0.02	
10104.00†	91.814	269.510	7111.61	3894.82	-2331.82	-3488.58	40°24'27.888"N	104°50'25.400"W	0.02	
10204.00†	91.790	269.511	7108.46	3992.79	-2332.68	-3588.53	40°24'27.880"N	104°50'26.692"W	0.02	
10304.00†	91.767	269.512	7105.36	4090.76	-2333.53	-3688.48	40°24'27.871"N	104°50'27.984"W	0.02	
10404.00†	91.743	269.514	7102.29	4188.73	-2334.38	-3788.43	40°24'27.862"N	104°50'29.276"W	0.02	
10504.00†	91.720	269.515	7099.27	4286.71	-2335.23	-3888.38	40°24'27.854"N	104°50'30.568"W	0.02	
10604.00†	91.697	269.517	7096.29	4384.68	-2336.07	-3988.33	40°24'27.845"N	104°50'31.860"W	0.02	
10704.00†	91.673	269.518	7093.35	4482.65	-2336.91	-4088.29	40°24'27.837"N	104°50'33.152"W	0.02	
10804.00†	91.650	269.520	7090.45	4580.63	-2337.75	-4188.24	40°24'27.829"N	104°50'34.444"W	0.02	
10904.00†	91.626	269.521	7087.59	4678.60	-2338.59	-4288.20	40°24'27.820"N	104°50'35.736"W	0.02	
11004.00†	91.603	269.522	7084.78	4776.58	-2339.42	-4388.15	40°24'27.812"N	104°50'37.028"W	0.02	
11104.00†	91.580	269.524	7082.00	4874.56	-2340.26	-4488.11	40°24'27.803"N	104°50'38.320"W	0.02	
11204.00†	91.556	269.525	7079.26	4972.53	-2341.09	-4588.07	40°24'27.795"N	104°50'39.612"W	0.02	
11304.00†	91.533	269.527	7076.57	5070.51	-2341.91	-4688.03	40°24'27.787"N	104°50'40.905"W	0.02	
11404.00†	91.509	269.528	7073.91	5168.49	-2342.74	-4787.99	40°24'27.778"N	104°50'42.197"W	0.02	



Planned Wellpath Report

BOST FARM 34N-11C-L (REV-B.0) PWP

Page 6 of 10



REFERENCE WELLPATH IDENTIFICATION			
Operator	SRC ENERGY	Slot	SLOT#11 BOST FARM 34N-11C-L (2666'FSL & 1254'FWL, SEC.07)
Area	COLORADO	Well	BOST FARM 34N-11C-L
Field	WELD COUNTY (NAD83,TRUE NORTH)	Wellbore	BOST FARM 34N-11C-L PWB
Facility	SEC.07-T05N-R66W		

WELLPATH DATA (187 stations) † = interpolated/extrapolated station										Comments
MD [ft]	Inclination [°]	Azimuth [°]	TVD [ft]	Vert Sect [ft]	North [ft]	East [ft]	Latitude	Longitude	DLS [°/100ft]	
11504.00†	91.486	269.530	7071.30	5266.47	-2343.56	-4887.95	40°24'27.770"N	104°50'43.489"W	0.02	
11604.00†	91.463	269.531	7068.73	5364.45	-2344.38	-4987.92	40°24'27.762"N	104°50'44.781"W	0.02	
11704.00†	91.439	269.532	7066.19	5462.43	-2345.20	-5087.88	40°24'27.753"N	104°50'46.073"W	0.02	
11804.00†	91.416	269.534	7063.70	5560.41	-2346.01	-5187.85	40°24'27.745"N	104°50'47.366"W	0.02	
11904.00†	91.392	269.535	7061.25	5658.39	-2346.82	-5287.81	40°24'27.737"N	104°50'48.658"W	0.02	
12004.00†	91.369	269.537	7058.84	5756.37	-2347.63	-5387.78	40°24'27.729"N	104°50'49.950"W	0.02	
12104.00†	91.345	269.538	7056.47	5854.35	-2348.44	-5487.75	40°24'27.720"N	104°50'51.243"W	0.02	
12204.00†	91.322	269.539	7054.15	5952.34	-2349.25	-5587.72	40°24'27.712"N	104°50'52.535"W	0.02	
12304.00†	91.299	269.541	7051.86	6050.32	-2350.05	-5687.69	40°24'27.704"N	104°50'53.827"W	0.02	
12404.00†	91.275	269.542	7049.61	6148.30	-2350.85	-5787.66	40°24'27.696"N	104°50'55.119"W	0.02	
12504.00†	91.252	269.544	7047.41	6246.29	-2351.64	-5887.63	40°24'27.688"N	104°50'56.412"W	0.02	
12604.00†	91.228	269.545	7045.25	6344.27	-2352.44	-5987.61	40°24'27.680"N	104°50'57.704"W	0.02	
12704.00†	91.205	269.547	7043.12	6442.25	-2353.23	-6087.58	40°24'27.672"N	104°50'58.996"W	0.02	
12804.00†	91.182	269.548	7041.04	6540.24	-2354.02	-6187.56	40°24'27.664"N	104°51'00.289"W	0.02	
12904.00†	91.158	269.549	7039.00	6638.22	-2354.81	-6287.53	40°24'27.656"N	104°51'01.581"W	0.02	
13004.00†	91.135	269.551	7037.00	6736.21	-2355.59	-6387.51	40°24'27.648"N	104°51'02.874"W	0.02	
13104.00†	91.111	269.552	7035.04	6834.19	-2356.38	-6487.49	40°24'27.640"N	104°51'04.166"W	0.02	
13204.00†	91.088	269.554	7033.12	6932.18	-2357.16	-6587.47	40°24'27.632"N	104°51'05.458"W	0.02	
13304.00†	91.065	269.555	7031.24	7030.17	-2357.93	-6687.45	40°24'27.624"N	104°51'06.751"W	0.02	
13404.00†	91.041	269.557	7029.40	7128.15	-2358.71	-6787.43	40°24'27.616"N	104°51'08.043"W	0.02	
13504.00†	91.018	269.558	7027.61	7226.14	-2359.48	-6887.41	40°24'27.608"N	104°51'09.336"W	0.02	
13604.00†	90.994	269.559	7025.85	7324.13	-2360.25	-6987.39	40°24'27.600"N	104°51'10.628"W	0.02	
13704.00†	90.971	269.561	7024.13	7422.11	-2361.02	-7087.37	40°24'27.592"N	104°51'11.921"W	0.02	
13804.00†	90.947	269.562	7022.46	7520.10	-2361.78	-7187.35	40°24'27.584"N	104°51'13.213"W	0.02	
13904.00†	90.924	269.564	7020.83	7618.09	-2362.55	-7287.34	40°24'27.576"N	104°51'14.505"W	0.02	
14004.00†	90.901	269.565	7019.24	7716.08	-2363.31	-7387.32	40°24'27.569"N	104°51'15.798"W	0.02	
14104.00†	90.877	269.567	7017.68	7814.06	-2364.06	-7487.31	40°24'27.561"N	104°51'17.090"W	0.02	
14204.00†	90.854	269.568	7016.17	7912.05	-2364.82	-7587.29	40°24'27.553"N	104°51'18.383"W	0.02	
14304.00†	90.830	269.569	7014.70	8010.04	-2365.57	-7687.28	40°24'27.545"N	104°51'19.675"W	0.02	
14404.00†	90.807	269.571	7013.27	8108.03	-2366.32	-7787.27	40°24'27.538"N	104°51'20.968"W	0.02	



Planned Wellpath Report

BOST FARM 34N-11C-L (REV-B.0) PWP

Page 7 of 10



REFERENCE WELLPATH IDENTIFICATION			
Operator	SRC ENERGY	Slot	SLOT#11 BOST FARM 34N-11C-L (2666'FSL & 1254'FWL, SEC.07)
Area	COLORADO	Well	BOST FARM 34N-11C-L
Field	WELD COUNTY (NAD83,TRUE NORTH)	Wellbore	BOST FARM 34N-11C-L PWB
Facility	SEC.07-T05N-R66W		

WELLPATH DATA (187 stations) † = interpolated/extrapolated station										
MD [ft]	Inclination [°]	Azimuth [°]	TVD [ft]	Vert Sect [ft]	North [ft]	East [ft]	Latitude	Longitude	DLS [°/100ft]	Comments
14504.00†	90.784	269.572	7011.89	8206.01	-2367.07	-7887.25	40°24'27.530"N	104°51'22.260"W	0.02	
14604.00†	90.760	269.574	7010.54	8304.00	-2367.81	-7987.24	40°24'27.522"N	104°51'23.553"W	0.02	
14704.00†	90.737	269.575	7009.23	8401.99	-2368.56	-8087.23	40°24'27.515"N	104°51'24.846"W	0.02	
14804.00†	90.713	269.577	7007.97	8499.98	-2369.30	-8187.22	40°24'27.507"N	104°51'26.138"W	0.02	
14904.00†	90.690	269.578	7006.74	8597.97	-2370.03	-8287.21	40°24'27.499"N	104°51'27.431"W	0.02	
15004.00†	90.667	269.579	7005.56	8695.96	-2370.77	-8387.20	40°24'27.492"N	104°51'28.723"W	0.02	
15104.00†	90.643	269.581	7004.42	8793.94	-2371.50	-8487.19	40°24'27.484"N	104°51'30.016"W	0.02	
15204.00†	90.620	269.582	7003.31	8891.93	-2372.23	-8587.18	40°24'27.477"N	104°51'31.308"W	0.02	
15304.00†	90.596	269.584	7002.25	8989.92	-2372.96	-8687.17	40°24'27.469"N	104°51'32.601"W	0.02	
15404.00†	90.573	269.585	7001.23	9087.91	-2373.69	-8787.17	40°24'27.461"N	104°51'33.893"W	0.02	
15504.00†	90.549	269.587	7000.25	9185.90	-2374.41	-8887.16	40°24'27.454"N	104°51'35.186"W	0.02	
15604.00†	90.526	269.588	6999.32	9283.88	-2375.13	-8987.15	40°24'27.447"N	104°51'36.479"W	0.02	
15704.00†	90.503	269.589	6998.42	9381.87	-2375.85	-9087.14	40°24'27.439"N	104°51'37.771"W	0.02	
15804.00†	90.479	269.591	6997.56	9479.86	-2376.56	-9187.14	40°24'27.432"N	104°51'39.064"W	0.02	
15904.00†	90.456	269.592	6996.74	9577.85	-2377.27	-9287.13	40°24'27.424"N	104°51'40.356"W	0.02	
16004.00†	90.432	269.594	6995.97	9675.83	-2377.98	-9387.13	40°24'27.417"N	104°51'41.649"W	0.02	
16104.00†	90.409	269.595	6995.24	9773.82	-2378.69	-9487.12	40°24'27.409"N	104°51'42.942"W	0.02	
16204.00†	90.386	269.597	6994.54	9871.81	-2379.40	-9587.12	40°24'27.402"N	104°51'44.234"W	0.02	
16304.00†	90.362	269.598	6993.89	9969.79	-2380.10	-9687.11	40°24'27.395"N	104°51'45.527"W	0.02	
16404.00†	90.339	269.599	6993.28	10067.78	-2380.80	-9787.11	40°24'27.387"N	104°51'46.819"W	0.02	
16504.00†	90.315	269.601	6992.71	10165.77	-2381.50	-9887.10	40°24'27.380"N	104°51'48.112"W	0.02	
16604.00†	90.292	269.602	6992.18	10263.75	-2382.19	-9987.10	40°24'27.373"N	104°51'49.405"W	0.02	
16704.00†	90.269	269.604	6991.69	10361.74	-2382.89	-10087.10	40°24'27.366"N	104°51'50.697"W	0.02	
16804.00†	90.245	269.605	6991.24	10459.72	-2383.58	-10187.09	40°24'27.358"N	104°51'51.990"W	0.02	
16904.00†	90.222	269.607	6990.83	10557.71	-2384.26	-10287.09	40°24'27.351"N	104°51'53.283"W	0.02	
17004.00†	90.198	269.608	6990.47	10655.69	-2384.95	-10387.09	40°24'27.344"N	104°51'54.575"W	0.02	
17104.00†	90.175	269.609	6990.14	10753.67	-2385.63	-10487.08	40°24'27.337"N	104°51'55.868"W	0.02	
17204.00†	90.151	269.611	6989.86	10851.66	-2386.31	-10587.08	40°24'27.330"N	104°51'57.161"W	0.02	
17304.00†	90.128	269.612	6989.61	10949.64	-2386.99	-10687.08	40°24'27.323"N	104°51'58.453"W	0.02	
17404.00†	90.105	269.614	6989.41	11047.62	-2387.67	-10787.08	40°24'27.316"N	104°51'59.746"W	0.02	



Planned Wellpath Report

BOST FARM 34N-11C-L (REV-B.0) PWP

Page 8 of 10



REFERENCE WELLPATH IDENTIFICATION			
Operator	SRC ENERGY	Slot	SLOT#11 BOST FARM 34N-11C-L (2666'FSL & 1254'FWL, SEC.07)
Area	COLORADO	Well	BOST FARM 34N-11C-L
Field	WELD COUNTY (NAD83,TRUE NORTH)	Wellbore	BOST FARM 34N-11C-L PWB
Facility	SEC.07-T05N-R66W		

WELLPATH DATA (187 stations) † = interpolated/extrapolated station										
MD [ft]	Inclination [°]	Azimuth [°]	TVD [ft]	Vert Sect [ft]	North [ft]	East [ft]	Latitude	Longitude	DLS [°/100ft]	Comments
17504.00†	90.081	269.615	6989.25	11145.61	-2388.34	-10887.07	40°24'27.308"N	104°52'01.039"W	0.02	
17604.00†	90.058	269.617	6989.12	11243.59	-2389.01	-10987.07	40°24'27.301"N	104°52'02.331"W	0.02	
17704.00†	90.034	269.618	6989.04	11341.57	-2389.68	-11087.07	40°24'27.294"N	104°52'03.624"W	0.02	
17804.00†	90.011	269.619	6989.00	11439.55	-2390.34	-11187.07	40°24'27.287"N	104°52'04.916"W	0.02	
17851.00	90.000	269.620	6989.00 ²	11485.60	-2390.66	-11234.07	40°24'27.284"N	104°52'05.524"W	0.02	End of 3D Arc
17904.00†	90.000	269.620	6989.00	11537.53	-2391.01	-11287.07	40°24'27.280"N	104°52'06.209"W	0.00	
17950.95	90.000	269.620	6989.00 ³	11583.53	-2391.32	-11334.01	40°24'27.277"N	104°52'06.816"W	0.00	End of Tangent

HOLE & CASING SECTIONS - Ref Wellbore: BOST FARM 34N-11C-L PWB Ref Wellpath: BOST FARM 34N-11C-L (REV-B.0) PWP									
String/Diameter	Start MD [ft]	End MD [ft]	Interval [ft]	Start TVD [ft]	End TVD [ft]	Start N/S [ft]	Start E/W [ft]	End N/S [ft]	End E/W [ft]
13.5in Open Hole	4.00	1750.00	1746.00	4.00	1694.57	0.00	0.00	-346.02	-120.79
9.625in Casing Surface	4.00	1750.00	1746.00	4.00	1694.57	0.00	0.00	-346.02	-120.79
8.5in Open Hole	1750.00	17950.95	16200.95	1694.57	N/A	-346.02	-120.79	N/A	N/A



Planned Wellpath Report

BOST FARM 34N-11C-L (REV-B.0) PWP

Page 9 of 10



REFERENCE WELLPATH IDENTIFICATION			
Operator	SRC ENERGY	Slot	SLOT#11 BOST FARM 34N-11C-L (2666'FSL & 1254'FWL, SEC.07)
Area	COLORADO	Well	BOST FARM 34N-11C-L
Field	WELD COUNTY (NAD83,TRUE NORTH)	Wellbore	BOST FARM 34N-11C-L PWB
Facility	SEC.07-T05N-R66W		

TARGETS									
Name	MD [ft]	TVD [ft]	North [ft]	East [ft]	Grid East [US ft]	Grid North [US ft]	Latitude	Longitude	Shape
SEC.07-T05N-R66W		0.00	-114.03	4.19	3187161.59	1394309.79	40°24'49.806"N	104°49'40.249"W	polygon
SEC.11-T05N-R67W		0.00	-114.03	4.19	3187161.59	1394309.79	40°24'49.806"N	104°49'40.249"W	polygon
SEC.12-T05N-R67W		0.00	-114.03	4.19	3187161.59	1394309.79	40°24'49.806"N	104°49'40.249"W	polygon
BOST FARM 34N-11C-L BHL ON PLAT (274'FSL & 360'FWL, SEC.11)		6989.00	-2391.30	-11334.01	3175841.44	1391946.74	40°24'27.277"N	104°52'06.816"W	point
3) BOST FARM 34N-11C-L BHL REV-1 (274'FSL & 360'FWL, SEC.11)	17950.95	6989.00	-2391.32	-11334.01	3175841.44	1391946.72	40°24'27.277"N	104°52'06.816"W	point
BOST FARM 34N-11C-L BPZ ON PLAT (277'FSL & 460'FWL, SEC.11)		6989.00	-2390.62	-11234.03	3175941.40	1391948.18	40°24'27.284"N	104°52'05.524"W	point
2) BOST FARM 34N-11C-L BPZ REV-1 (277'FSL & 460'FWL, SEC.11)	17851.00	6989.00	-2390.66	-11234.07	3175941.37	1391948.14	40°24'27.284"N	104°52'05.524"W	point
1) BOST FARM 34N-11C-L TOP OF PROD REV-1 (345'FSL & 150'FEL, SEC.12)	8005.86	7187.00	-2313.33	-1391.89	3185782.27	1392100.06	40°24'28.073"N	104°49'58.296"W	point
BOST FARM 34N-11C-L TOP OF PROD ON PLAT (345'FSL & 150'FEL, SEC.12)		7232.00	-2313.35	-1391.89	3185782.27	1392100.04	40°24'28.073"N	104°49'58.296"W	point

SURVEY PROGRAM - Ref Wellbore: BOST FARM 34N-11C-L PWB Ref Wellpath: BOST FARM 34N-11C-L (REV-B.0) PWP				
Start MD [ft]	End MD [ft]	Positional Uncertainty Model	Log Name/Comment	Wellbore
4.00	1750.00	BHI NaviTrak (Standard)		BOST FARM 34N-11C-L PWB
1750.00	17950.95	BHI AutoTrak Curve (MagCAD+IFR1, Short spacing)		BOST FARM 34N-11C-L PWB



Planned Wellpath Report

BOST FARM 34N-11C-L (REV-B.0) PWP

Page 10 of 10



REFERENCE WELLPATH IDENTIFICATION			
Operator	SRC ENERGY	Slot	SLOT#11 BOST FARM 34N-11C-L (2666'FSL & 1254'FWL, SEC.07)
Area	COLORADO	Well	BOST FARM 34N-11C-L
Field	WELD COUNTY (NAD83,TRUE NORTH)	Wellbore	BOST FARM 34N-11C-L PWB
Facility	SEC.07-T05N-R66W		

DESIGN COMMENTS				
MD [ft]	Inclination [°]	Azimuth [°]	TVD [ft]	Comment
4.00	0.000	199.243	4.00	Tie On
200.00	0.000	199.243	200.00	End of Tangent
1232.16	20.643	199.243	1209.97	End of Build
7057.79	20.643	199.243	6661.57	End of Tangent
8005.86	92.305	269.480	7187.00	End of 3D Arc
17851.00	90.000	269.620	6989.00	End of 3D Arc
17950.95	90.000	269.620	6989.00	End of Tangent