

SRC ENERGY

Location: COLORADO Slot: SLOT#12 BOST FARM 34C-11-L (2666'FSL & 1274'FWL, SEC.07)
Field: WELD COUNTY (NAD83, TRUE NORTH) Well: BOST FARM 34C-11-L
Facility: SEC.07-T05N-R66W Wellbore: BOST FARM 34C-11-L PWB

Plot reference wellpath is BOST FARM 34C-11-L (REV-B.0) PWP	Grid System: NAD83 / Lambert Colorado SP, Northern Zone (501), US feet
True vertical depths are referenced to PROPETRO 12 (4) (RKB)	North Reference: True north
Measured depths are referenced to PROPETRO 12 (4) (RKB)	Scale: True distance
PROPETRO 12 (4) (RKB) to Mean Sea Level: 4876 feet	Depths are in feet
Mean Sea Level to Mud line (At Slot: SLOT#12 BOST FARM 34C-11-L (2666'FSL & 1274'FWL, SEC.07): 0 feet	Created by: robiate01 on 2018-10-18
Coordinates are in feet referenced to Slot	Database: WA DENVER

Location Information

Facility Name			Grid East (US ft)	Grid North (US ft)	Latitude	Longitude
SEC.07-T05N-R66W			3187161.591	1394309.789	40°24'49.806"N	104°49'40.249"W
Slot	Local N (ft)	Local E (ft)	Grid East (US ft)	Grid North (US ft)	Latitude	Longitude
SLOT#12 BOST FARM 34C-11-L (2666'FSL & 1274'FWL, SEC.07)	113.67	15.86	3187176.585	1394423.567	40°24'50.929"N	104°49'40.044"W
PROPETRO 12 (4) (RKB) to Mud line (N Slot: SLOT#12 BOST FARM 34C-11-L (2666'FSL & 1274'FWL, SEC.07))					4876ft	
Mean Sea Level to Mud line (N Slot: SLOT#12 BOST FARM 34C-11-L (2666'FSL & 1274'FWL, SEC.07))					0ft	
PROPETRO 12 (4) (RKB) to Mean Sea Level					4876ft	

Survey Program

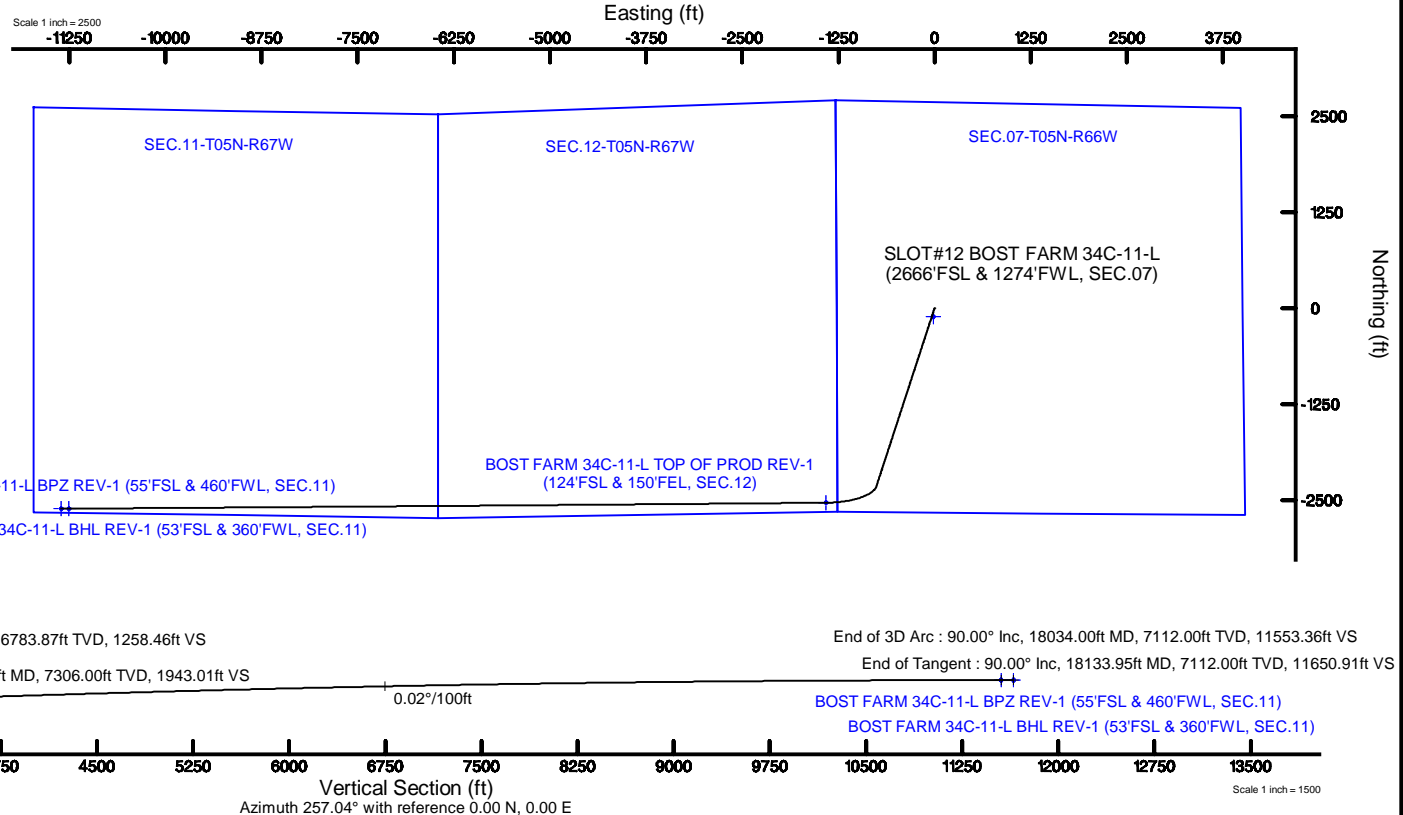
Start MD (ft)	End MD (ft)	Tool	Model	Log Name/Comment	Wellbore
4.00	1750.00	BH1 NavTrak	BH1 NavTrak (Standard)		BOST FARM 34C-11-L PWB
1750.00	18133.95	BH1 AutoTrak Curve	BH1 AutoTrak Curve (MagCAD+IFR1, Short spacing)		BOST FARM 34C-11-L PWB



SRC ENERGY



Scale 1 inch = 2500



Targets

Name	MD (ft)	TVD (ft)	Local N (ft)	Local E (ft)	Grid East (US ft)	Grid North (US ft)	Latitude	Longitude	
SEC.07-T05N-R66W		0.00	-113.67	-15.86	3187161.59	1394309.79	40°24'49.806"N	104°49'40.249"W	
SEC.11-T05N-R67W		0.00	-113.67	-15.86	3187161.59	1394309.79	40°24'49.806"N	104°49'40.249"W	
SEC.12-T05N-R67W		0.00	-113.67	-15.86	3187161.59	1394309.79	40°24'49.806"N	104°49'40.249"W	
BOST FARM 34C-11-L BHL ON PLAT (53FSL & 360FWL, SEC.11)		7112.00	-2612.79	-11354.17	3175843.02	1391724.89	40°24'25.085"N	104°52'06.816"W	
BOST FARM 34C-11-L BHL REV-1 (53FSL & 360FWL, SEC.11)		18133.95	7112.00	-2612.77	-11354.17	3175843.02	1391724.91	40°24'25.085"N	104°52'06.816"W
BOST FARM 34C-11-L BPZ ON PLAT (55FSL & 460FWL, SEC.11)		7112.00	-2612.11	-11254.19	3175942.98	1391726.33	40°24'25.092"N	104°52'05.524"W	
BOST FARM 34C-11-L BPZ REV-1 (55FSL & 460FWL, SEC.11)		18034.00	7112.00	-2612.11	-11254.22	3175942.95	1391726.33	40°24'25.092"N	104°52'05.524"W
BOST FARM 34C-11-L TOP OF PROD REV-1 (124FSL & 150FEL, SEC.12)		8187.49	7306.00	-2534.48	-1410.56	3185785.33	1391878.57	40°24'25.884"N	104°49'58.278"W
BOST FARM 34C-11-L TOP OF PROD ON PLAT (124FSL & 150FEL, SEC.12)		7362.00	-2534.48	-1410.56	3185785.33	1391878.57	40°24'25.884"N	104°49'58.278"W	

Hole and Casing Sections

Name	Start MD (ft)	End MD (ft)	Interval (ft)	Start TVD (ft)	End TVD (ft)	Start Local N (ft)	Start Local E (ft)	End Local N (ft)	End Local E (ft)	Wellbore
13.5in Open Hole	4.00	1750.00	1746.00	4.00	1684.16	0.00	0.00	-391.78	-127.66	BOST FARM 34C-11-L PWB
9.625in Casing Surface	4.00	1750.00	1746.00	4.00	1684.16	0.00	0.00	-391.78	-127.66	BOST FARM 34C-11-L PWB
8.5in Open Hole	1750.00	18133.95	16383.95	1684.16	7112.00	-391.78	-127.66	-2612.77	-11354.17	BOST FARM 34C-11-L PWB

Well Profile Data

Design Comment	MD (ft)	Inc (°)	Az (°)	TVD (ft)	Local N (ft)	Local E (ft)	DLS (°/100ft)	VS (ft)
Tie On	4.00	0.000	198.049	4.00	0.00	0.00	0.00	0.00
End of Tangent	100.00	0.000	198.049	100.00	0.00	0.00	0.00	0.00
End of Build	1185.68	21.714	198.049	1159.88	-193.27	-62.98	2.00	104.72
End of Tangent	7239.20	21.714	198.049	6783.87	-2322.67	-756.87	0.00	1258.46
End of 3D Arc	8187.49	92.258	269.476	7306.00	-2534.48	-1410.56	9.00	1943.01
End of 3D Arc	18034.00	90.000	269.620	7112.00	-2612.11	-11254.22	0.02	11553.36
End of Tangent	18133.95	90.000	269.620	7112.00	-2612.77	-11354.17	0.00	11650.91

BOST FARM 34C-11-L (REV-B.0) LAS.las

~VERSION INFORMATION

VERS. 2.0 : CWLS LOG ASCII STANDARD-VERSION 2.0

WRAP. NO : ASCII DATA SECTION CONTAINS ONE ROW PER WELLPATH STATION

~WELL INFORMATION

#MNEM	.UNITS	DATA	:DESCRIPTION
#----	.-----	----	:-----
STRT	.ft	0.00	:START MD
STOP	.ft	18133.95	:STOP MD
STEP	.ft	0.0	:STEP (non-uniform increment)
NULL	.	-999.99	:NULL
COMP	.	SRC ENERGY	:OPERATOR
WELL	.	BOST FARM 34C-11-L	:WELL
FLD	.	WELD COUNTY (NAD83,TRUE NORTH)	:FIELD
LOC	.	COLORADO	:AREA (aka: Location)
CNTY	.	N/A	:COUNTY
STAT	.	N/A	:STATE
CTRY	.	N/A	:COUNTRY
SRVC	.	Baker Hughes	:CONTRACTOR
DATE	.	09/27/2018	:LOG REV DATE
API	.		:API NUMBER

~OTHER INFORMATION

#Software: WellArchitect(R) Version 5.1

#MNEM	.UNITS	DATA	:DESCRIPTION
#----	.-----	----	:-----
WPTYPE	.	PLANNED WELLPATH	:WELLPATH TYPE
FACILITY	.	SEC.07-T05N-R66W	:FACILITY
SLOT	.	SLOT#12 BOST FARM 34C-11-L (2666'FSL & 1274'FWL, SEC.07):SLOT	:SLOT
WELLBORE	.	BOST FARM 34C-11-L PWB	:WELLBORE
WELLPATH	.	BOST FARM 34C-11-L (REV-B.0) PWP	:WELLPATH
MDREFPT	.	PROPETRO 12 (4') (RKB)	:MD REFERENCE POINT
TVDREFPT	.	PROPETRO 12 (4') (RKB)	:TVD REFERENCE POINT
LCLREFPT	.	Slot	:LOCAL COORDINATE REFERENCE PT

BOST FARM 34C-11-L (REV-B.0) LAS.las

VSAZIMUTH.deg 257.04 :VERTICAL SECTION AZIMUTH
 VSORIGN .ft 0.00 :VERTICAL SECTION ORIGIN NORTH
 VSORIGE .ft 0.00 :VERTICAL SECTION ORIGIN EAST

~CURVE (WELLPATH) INFORMATION

#MNEM .UNITS :DESCRIPTION
 #---- .----- :-----
 DEPT .ft :MEASURED DEPTH
 INC .deg :INCLINATION
 AZI .deg :AZIMUTH
 TVD .ft :TRUE VERTICAL DEPTH
 SECT .ft :CROSS SECTION (CURTAIN/VERTICAL)
 LOCALN .ft :LOCAL NORTH
 LOCALE .ft :LOCAL EAST
 LAT .deg :LATITUDE
 LONG .deg :LONGITUDE
 DLS .deg/100ft :DOGLEG SEVERITY

~ASCII DATA

0.00	0.00	198.05	0.00	0.00	0.00	0.00	40.4141470	-104.8277900	0.00
4.00	0.00	198.05	4.00	0.00	0.00	0.00	40.4141470	-104.8277900	0.00
100.00	0.00	198.05	100.00	0.00	0.00	0.00	40.4141470	-104.8277900	0.00
104.00	0.08	198.05	104.00	0.00	0.00	0.00	40.4141470	-104.8277900	2.00
204.00	2.08	198.05	203.98	0.97	-1.79	-0.58	40.4141421	-104.8277921	2.00
304.00	4.08	198.05	303.83	3.74	-6.90	-2.25	40.4141281	-104.8277981	2.00
404.00	6.08	198.05	403.43	8.30	-15.32	-4.99	40.4141049	-104.8278079	2.00
504.00	8.08	198.05	502.66	14.65	-27.04	-8.81	40.4140728	-104.8278216	2.00
604.00	10.08	198.05	601.40	22.78	-42.04	-13.70	40.4140316	-104.8278392	2.00
704.00	12.08	198.05	699.54	32.68	-60.32	-19.65	40.4139814	-104.8278606	2.00
804.00	14.08	198.05	796.94	44.34	-81.83	-26.67	40.4139224	-104.8278858	2.00
904.00	16.08	198.05	893.49	57.74	-106.57	-34.73	40.4138545	-104.8279147	2.00
1004.00	18.08	198.05	989.07	72.87	-134.49	-43.83	40.4137778	-104.8279474	2.00
1104.00	20.08	198.05	1083.57	89.71	-165.57	-53.95	40.4136925	-104.8279838	2.00
1185.68	21.71	198.05	1159.88	104.72	-193.27	-62.98	40.4136165	-104.8280162	2.00

BOST FARM 34C-11-L (REV-B.0) LAS.las

1204.00	21.71	198.05	1176.90	108.21	-199.71	-65.08	40.4135988	-104.8280237	0.00
1304.00	21.71	198.05	1269.80	127.27	-234.89	-76.54	40.4135023	-104.8280649	0.00
1404.00	21.71	198.05	1362.71	146.33	-270.07	-88.00	40.4134057	-104.8281060	0.00
1504.00	21.71	198.05	1455.61	165.39	-305.24	-99.47	40.4133091	-104.8281472	0.00
1604.00	21.71	198.05	1548.52	184.44	-340.42	-110.93	40.4132126	-104.8281884	0.00
1704.00	21.71	198.05	1641.42	203.50	-375.59	-122.39	40.4131160	-104.8282295	0.00
1804.00	21.71	198.05	1734.33	222.56	-410.77	-133.85	40.4130195	-104.8282707	0.00
1904.00	21.71	198.05	1827.23	241.62	-445.95	-145.32	40.4129229	-104.8283118	0.00
2004.00	21.71	198.05	1920.13	260.68	-481.12	-156.78	40.4128264	-104.8283530	0.00
2104.00	21.71	198.05	2013.04	279.74	-516.30	-168.24	40.4127298	-104.8283942	0.00
2204.00	21.71	198.05	2105.94	298.80	-551.48	-179.71	40.4126333	-104.8284353	0.00
2304.00	21.71	198.05	2198.85	317.86	-586.65	-191.17	40.4125367	-104.8284765	0.00
2404.00	21.71	198.05	2291.75	336.92	-621.83	-202.63	40.4124401	-104.8285177	0.00
2504.00	21.71	198.05	2384.66	355.98	-657.01	-214.09	40.4123436	-104.8285588	0.00
2604.00	21.71	198.05	2477.56	375.04	-692.18	-225.56	40.4122470	-104.8286000	0.00
2704.00	21.71	198.05	2570.47	394.09	-727.36	-237.02	40.4121505	-104.8286411	0.00
2804.00	21.71	198.05	2663.37	413.15	-762.53	-248.48	40.4120539	-104.8286823	0.00
2904.00	21.71	198.05	2756.27	432.21	-797.71	-259.94	40.4119574	-104.8287235	0.00
3004.00	21.71	198.05	2849.18	451.27	-832.89	-271.41	40.4118608	-104.8287646	0.00
3104.00	21.71	198.05	2942.08	470.33	-868.06	-282.87	40.4117643	-104.8288058	0.00
3204.00	21.71	198.05	3034.99	489.39	-903.24	-294.33	40.4116677	-104.8288469	0.00
3304.00	21.71	198.05	3127.89	508.45	-938.42	-305.79	40.4115711	-104.8288881	0.00
3404.00	21.71	198.05	3220.80	527.51	-973.59	-317.26	40.4114746	-104.8289293	0.00
3504.00	21.71	198.05	3313.70	546.57	-1008.77	-328.72	40.4113780	-104.8289704	0.00
3604.00	21.71	198.05	3406.61	565.63	-1043.94	-340.18	40.4112815	-104.8290116	0.00
3704.00	21.71	198.05	3499.51	584.69	-1079.12	-351.64	40.4111849	-104.8290527	0.00
3804.00	21.71	198.05	3592.41	603.75	-1114.30	-363.11	40.4110884	-104.8290939	0.00
3904.00	21.71	198.05	3685.32	622.80	-1149.47	-374.57	40.4109918	-104.8291351	0.00
4004.00	21.71	198.05	3778.22	641.86	-1184.65	-386.03	40.4108953	-104.8291762	0.00
4104.00	21.71	198.05	3871.13	660.92	-1219.83	-397.49	40.4107987	-104.8292174	0.00
4204.00	21.71	198.05	3964.03	679.98	-1255.00	-408.96	40.4107021	-104.8292585	0.00
4304.00	21.71	198.05	4056.94	699.04	-1290.18	-420.42	40.4106056	-104.8292997	0.00
4404.00	21.71	198.05	4149.84	718.10	-1325.35	-431.88	40.4105090	-104.8293409	0.00
4504.00	21.71	198.05	4242.75	737.16	-1360.53	-443.35	40.4104125	-104.8293820	0.00

BOST FARM 34C-11-L (REV-B.0) LAS.las

4604.00	21.71	198.05	4335.65	756.22	-1395.71	-454.81	40.4103159	-104.8294232	0.00
4704.00	21.71	198.05	4428.55	775.28	-1430.88	-466.27	40.4102194	-104.8294643	0.00
4804.00	21.71	198.05	4521.46	794.34	-1466.06	-477.73	40.4101228	-104.8295055	0.00
4904.00	21.71	198.05	4614.36	813.40	-1501.24	-489.20	40.4100263	-104.8295467	0.00
5004.00	21.71	198.05	4707.27	832.45	-1536.41	-500.66	40.4099297	-104.8295878	0.00
5104.00	21.71	198.05	4800.17	851.51	-1571.59	-512.12	40.4098331	-104.8296290	0.00
5204.00	21.71	198.05	4893.08	870.57	-1606.76	-523.58	40.4097366	-104.8296701	0.00
5304.00	21.71	198.05	4985.98	889.63	-1641.94	-535.05	40.4096400	-104.8297113	0.00
5404.00	21.71	198.05	5078.89	908.69	-1677.12	-546.51	40.4095435	-104.8297525	0.00
5504.00	21.71	198.05	5171.79	927.75	-1712.29	-557.97	40.4094469	-104.8297936	0.00
5604.00	21.71	198.05	5264.69	946.81	-1747.47	-569.43	40.4093504	-104.8298348	0.00
5704.00	21.71	198.05	5357.60	965.87	-1782.65	-580.90	40.4092538	-104.8298759	0.00
5804.00	21.71	198.05	5450.50	984.93	-1817.82	-592.36	40.4091573	-104.8299171	0.00
5904.00	21.71	198.05	5543.41	1003.99	-1853.00	-603.82	40.4090607	-104.8299582	0.00
6004.00	21.71	198.05	5636.31	1023.05	-1888.18	-615.28	40.4089641	-104.8299994	0.00
6104.00	21.71	198.05	5729.22	1042.10	-1923.35	-626.75	40.4088676	-104.8300406	0.00
6204.00	21.71	198.05	5822.12	1061.16	-1958.53	-638.21	40.4087710	-104.8300817	0.00
6304.00	21.71	198.05	5915.03	1080.22	-1993.70	-649.67	40.4086745	-104.8301229	0.00
6404.00	21.71	198.05	6007.93	1099.28	-2028.88	-661.14	40.4085779	-104.8301640	0.00
6504.00	21.71	198.05	6100.83	1118.34	-2064.06	-672.60	40.4084814	-104.8302052	0.00
6604.00	21.71	198.05	6193.74	1137.40	-2099.23	-684.06	40.4083848	-104.8302463	0.00
6704.00	21.71	198.05	6286.64	1156.46	-2134.41	-695.52	40.4082882	-104.8302875	0.00
6804.00	21.71	198.05	6379.55	1175.52	-2169.59	-706.99	40.4081917	-104.8303287	0.00
6904.00	21.71	198.05	6472.45	1194.58	-2204.76	-718.45	40.4080951	-104.8303698	0.00
7004.00	21.71	198.05	6565.36	1213.64	-2239.94	-729.91	40.4079986	-104.8304110	0.00
7104.00	21.71	198.05	6658.26	1232.70	-2275.11	-741.37	40.4079020	-104.8304521	0.00
7204.00	21.71	198.05	6751.17	1251.76	-2310.29	-752.84	40.4078055	-104.8304933	0.00
7239.20	21.71	198.05	6783.87	1258.46	-2322.67	-756.87	40.4077715	-104.8305078	0.00
7304.00	24.14	211.71	6843.59	1273.97	-2345.36	-767.56	40.4077092	-104.8305461	9.00
7404.00	29.70	227.45	6932.83	1309.96	-2379.58	-796.62	40.4076153	-104.8306505	9.00
7504.00	36.55	238.19	7016.60	1359.79	-2412.10	-840.27	40.4075260	-104.8308072	9.00
7604.00	44.09	245.82	7092.83	1422.23	-2442.11	-897.43	40.4074436	-104.8310125	9.00
7704.00	52.02	251.58	7159.65	1495.74	-2468.87	-966.70	40.4073702	-104.8312612	9.00
7804.00	60.17	256.19	7215.41	1578.50	-2491.73	-1046.37	40.4073074	-104.8315473	9.00

BOST FARM 34C-11-L (REV-B.0) LAS.las

7904.00	68.45	260.10	7258.74	1668.50	-2510.11	-1134.49	40.4072569	-104.8318637	9.00
8004.00	76.82	263.58	7288.57	1763.50	-2523.58	-1228.87	40.4072199	-104.8322026	9.00
8104.00	85.23	266.83	7304.17	1861.16	-2531.80	-1327.20	40.4071974	-104.8325557	9.00
8187.49	92.26	269.48	7306.00	1943.01	-2534.48	-1410.56	40.4071900	-104.8328550	9.00
8204.00	92.25	269.48	7305.35	1959.12	-2534.63	-1427.06	40.4071896	-104.8329142	0.02
8304.00	92.23	269.48	7301.44	2056.70	-2535.55	-1526.98	40.4071871	-104.8332730	0.02
8404.00	92.21	269.48	7297.56	2154.28	-2536.46	-1626.90	40.4071846	-104.8336318	0.02
8504.00	92.19	269.48	7293.73	2251.86	-2537.36	-1726.82	40.4071820	-104.8339906	0.02
8604.00	92.16	269.48	7289.94	2349.44	-2538.27	-1826.75	40.4071795	-104.8343494	0.02
8704.00	92.14	269.48	7286.18	2447.02	-2539.17	-1926.67	40.4071770	-104.8347082	0.02
8804.00	92.12	269.49	7282.47	2544.61	-2540.07	-2026.60	40.4071746	-104.8350670	0.02
8904.00	92.09	269.49	7278.80	2642.19	-2540.96	-2126.53	40.4071721	-104.8354259	0.02
9004.00	92.07	269.49	7275.16	2739.78	-2541.86	-2226.46	40.4071696	-104.8357847	0.02
9104.00	92.05	269.49	7271.57	2837.36	-2542.75	-2326.39	40.4071671	-104.8361435	0.02
9204.00	92.03	269.49	7268.02	2934.95	-2543.64	-2426.32	40.4071647	-104.8365024	0.02
9304.00	92.00	269.49	7264.50	3032.54	-2544.52	-2526.26	40.4071622	-104.8368612	0.02
9404.00	91.98	269.49	7261.03	3130.13	-2545.41	-2626.19	40.4071597	-104.8372200	0.02
9504.00	91.96	269.50	7257.60	3227.72	-2546.29	-2726.13	40.4071573	-104.8375789	0.02
9604.00	91.93	269.50	7254.20	3325.31	-2547.17	-2826.07	40.4071548	-104.8379377	0.02
9704.00	91.91	269.50	7250.85	3422.90	-2548.05	-2926.01	40.4071524	-104.8382966	0.02
9804.00	91.89	269.50	7247.54	3520.49	-2548.92	-3025.95	40.4071500	-104.8386555	0.02
9904.00	91.86	269.50	7244.26	3618.08	-2549.79	-3125.89	40.4071476	-104.8390143	0.02
10004.00	91.84	269.50	7241.03	3715.67	-2550.66	-3225.84	40.4071451	-104.8393732	0.02
10104.00	91.82	269.50	7237.84	3813.27	-2551.52	-3325.78	40.4071427	-104.8397321	0.02
10204.00	91.80	269.51	7234.68	3910.86	-2552.39	-3425.73	40.4071403	-104.8400910	0.02
10304.00	91.77	269.51	7231.57	4008.46	-2553.25	-3525.68	40.4071379	-104.8404499	0.02
10404.00	91.75	269.51	7228.50	4106.05	-2554.11	-3625.63	40.4071355	-104.8408088	0.02
10504.00	91.73	269.51	7225.46	4203.65	-2554.96	-3725.58	40.4071331	-104.8411677	0.02
10604.00	91.70	269.51	7222.47	4301.25	-2555.82	-3825.53	40.4071307	-104.8415266	0.02
10704.00	91.68	269.51	7219.52	4398.85	-2556.67	-3925.48	40.4071284	-104.8418855	0.02
10804.00	91.66	269.51	7216.60	4496.44	-2557.52	-4025.43	40.4071260	-104.8422444	0.02
10904.00	91.64	269.52	7213.73	4594.04	-2558.36	-4125.39	40.4071236	-104.8426033	0.02
11004.00	91.61	269.52	7210.90	4691.64	-2559.21	-4225.35	40.4071213	-104.8429622	0.02
11104.00	91.59	269.52	7208.10	4789.24	-2560.05	-4325.30	40.4071189	-104.8433211	0.02

BOST FARM 34C-11-L (REV-B.0) LAS.las

11204.00	91.57	269.52	7205.35	4886.84	-2560.88	-4425.26	40.4071166	-104.8436801	0.02
11304.00	91.54	269.52	7202.64	4984.44	-2561.72	-4525.22	40.4071142	-104.8440390	0.02
11404.00	91.52	269.52	7199.96	5082.05	-2562.55	-4625.18	40.4071119	-104.8443979	0.02
11504.00	91.50	269.52	7197.33	5179.65	-2563.38	-4725.14	40.4071095	-104.8447569	0.02
11604.00	91.48	269.53	7194.74	5277.25	-2564.21	-4825.11	40.4071072	-104.8451158	0.02
11704.00	91.45	269.53	7192.18	5374.85	-2565.04	-4925.07	40.4071049	-104.8454747	0.02
11804.00	91.43	269.53	7189.67	5472.46	-2565.86	-5025.04	40.4071026	-104.8458337	0.02
11904.00	91.41	269.53	7187.20	5570.06	-2566.68	-5125.00	40.4071003	-104.8461927	0.02
12004.00	91.38	269.53	7184.76	5667.67	-2567.50	-5224.97	40.4070980	-104.8465516	0.02
12104.00	91.36	269.53	7182.37	5765.27	-2568.31	-5324.94	40.4070957	-104.8469106	0.02
12204.00	91.34	269.54	7180.02	5862.88	-2569.13	-5424.91	40.4070934	-104.8472695	0.02
12304.00	91.31	269.54	7177.70	5960.48	-2569.94	-5524.88	40.4070911	-104.8476285	0.02
12404.00	91.29	269.54	7175.43	6058.09	-2570.74	-5624.85	40.4070888	-104.8479875	0.02
12504.00	91.27	269.54	7173.20	6155.69	-2571.55	-5724.82	40.4070865	-104.8483464	0.02
12604.00	91.25	269.54	7171.00	6253.30	-2572.35	-5824.79	40.4070843	-104.8487054	0.02
12704.00	91.22	269.54	7168.85	6350.91	-2573.15	-5924.77	40.4070820	-104.8490644	0.02
12804.00	91.20	269.54	7166.74	6448.51	-2573.95	-6024.74	40.4070798	-104.8494234	0.02
12904.00	91.18	269.55	7164.66	6546.12	-2574.74	-6124.72	40.4070775	-104.8497824	0.02
13004.00	91.15	269.55	7162.63	6643.73	-2575.54	-6224.69	40.4070753	-104.8501414	0.02
13104.00	91.13	269.55	7160.64	6741.34	-2576.33	-6324.67	40.4070730	-104.8505004	0.02
13204.00	91.11	269.55	7158.68	6838.94	-2577.11	-6424.65	40.4070708	-104.8508593	0.02
13304.00	91.09	269.55	7156.77	6936.55	-2577.90	-6524.63	40.4070686	-104.8512183	0.02
13404.00	91.06	269.55	7154.90	7034.16	-2578.68	-6624.60	40.4070664	-104.8515773	0.02
13504.00	91.04	269.55	7153.07	7131.77	-2579.46	-6724.58	40.4070641	-104.8519364	0.02
13604.00	91.02	269.56	7151.27	7229.38	-2580.24	-6824.57	40.4070619	-104.8522954	0.02
13704.00	90.99	269.56	7149.52	7326.99	-2581.01	-6924.55	40.4070597	-104.8526544	0.02
13804.00	90.97	269.56	7147.81	7424.60	-2581.78	-7024.53	40.4070575	-104.8530134	0.02
13904.00	90.95	269.56	7146.13	7522.21	-2582.55	-7124.51	40.4070553	-104.8533724	0.02
14004.00	90.92	269.56	7144.50	7619.81	-2583.32	-7224.50	40.4070532	-104.8537314	0.02
14104.00	90.90	269.56	7142.91	7717.42	-2584.08	-7324.48	40.4070510	-104.8540904	0.02
14204.00	90.88	269.56	7141.36	7815.03	-2584.85	-7424.47	40.4070488	-104.8544494	0.02
14304.00	90.86	269.57	7139.84	7912.64	-2585.61	-7524.45	40.4070466	-104.8548085	0.02
14404.00	90.83	269.57	7138.37	8010.25	-2586.36	-7624.44	40.4070445	-104.8551675	0.02
14504.00	90.81	269.57	7136.94	8107.86	-2587.12	-7724.42	40.4070423	-104.8555265	0.02

BOST FARM 34C-11-L (REV-B.0) LAS.las

14604.00	90.79	269.57	7135.54	8205.47	-2587.87	-7824.41	40.4070402	-104.8558856	0.02
14704.00	90.76	269.57	7134.19	8303.08	-2588.62	-7924.40	40.4070380	-104.8562446	0.02
14804.00	90.74	269.57	7132.88	8400.69	-2589.36	-8024.39	40.4070359	-104.8566036	0.02
14904.00	90.72	269.57	7131.61	8498.30	-2590.11	-8124.38	40.4070338	-104.8569627	0.02
15004.00	90.70	269.58	7130.37	8595.91	-2590.85	-8224.37	40.4070316	-104.8573217	0.02
15104.00	90.67	269.58	7129.18	8693.52	-2591.59	-8324.36	40.4070295	-104.8576807	0.02
15204.00	90.65	269.58	7128.03	8791.13	-2592.33	-8424.35	40.4070274	-104.8580398	0.02
15304.00	90.63	269.58	7126.91	8888.73	-2593.06	-8524.34	40.4070253	-104.8583988	0.02
15404.00	90.60	269.58	7125.84	8986.34	-2593.79	-8624.33	40.4070232	-104.8587579	0.02
15504.00	90.58	269.58	7124.81	9083.95	-2594.52	-8724.32	40.4070211	-104.8591169	0.02
15604.00	90.56	269.58	7123.82	9181.56	-2595.25	-8824.32	40.4070190	-104.8594760	0.02
15704.00	90.53	269.59	7122.86	9279.17	-2595.97	-8924.31	40.4070169	-104.8598350	0.02
15804.00	90.51	269.59	7121.95	9376.78	-2596.69	-9024.30	40.4070148	-104.8601941	0.02
15904.00	90.49	269.59	7121.08	9474.39	-2597.41	-9124.30	40.4070128	-104.8605531	0.02
16004.00	90.47	269.59	7120.25	9571.99	-2598.12	-9224.29	40.4070107	-104.8609122	0.02
16104.00	90.44	269.59	7119.45	9669.60	-2598.84	-9324.28	40.4070086	-104.8612712	0.02
16204.00	90.42	269.59	7118.70	9767.21	-2599.55	-9424.28	40.4070066	-104.8616303	0.02
16304.00	90.40	269.60	7117.99	9864.82	-2600.26	-9524.27	40.4070045	-104.8619893	0.02
16404.00	90.37	269.60	7117.32	9962.42	-2600.96	-9624.27	40.4070025	-104.8623484	0.02
16504.00	90.35	269.60	7116.68	10060.03	-2601.67	-9724.26	40.4070004	-104.8627074	0.02
16604.00	90.33	269.60	7116.09	10157.63	-2602.37	-9824.26	40.4069984	-104.8630665	0.02
16704.00	90.31	269.60	7115.54	10255.24	-2603.06	-9924.26	40.4069964	-104.8634256	0.02
16804.00	90.28	269.60	7115.03	10352.85	-2603.76	-10024.25	40.4069944	-104.8637846	0.02
16904.00	90.26	269.60	7114.56	10450.45	-2604.45	-10124.25	40.4069924	-104.8641437	0.02
17004.00	90.24	269.61	7114.12	10548.06	-2605.14	-10224.25	40.4069903	-104.8645027	0.02
17104.00	90.21	269.61	7113.73	10645.66	-2605.83	-10324.24	40.4069883	-104.8648618	0.02
17204.00	90.19	269.61	7113.38	10743.26	-2606.52	-10424.24	40.4069863	-104.8652209	0.02
17304.00	90.17	269.61	7113.07	10840.87	-2607.20	-10524.24	40.4069844	-104.8655799	0.02
17404.00	90.14	269.61	7112.79	10938.47	-2607.88	-10624.23	40.4069824	-104.8659390	0.02
17504.00	90.12	269.61	7112.56	11036.07	-2608.56	-10724.23	40.4069804	-104.8662981	0.02
17604.00	90.10	269.61	7112.37	11133.67	-2609.23	-10824.23	40.4069784	-104.8666571	0.02
17704.00	90.08	269.62	7112.22	11231.28	-2609.91	-10924.23	40.4069765	-104.8670162	0.02
17804.00	90.05	269.62	7112.11	11328.88	-2610.58	-11024.22	40.4069745	-104.8673753	0.02
17904.00	90.03	269.62	7112.03	11426.48	-2611.24	-11124.22	40.4069725	-104.8677343	0.02

BOST FARM 34C-11-L (REV-B.0) LAS.las									
18004.00	90.01	269.62	7112.00	11524.08	-2611.91	-11224.22	40.4069706	-104.8680934	0.02
18034.00	90.00	269.62	7112.00	11553.36	-2612.11	-11254.22	40.4069700	-104.8682011	0.02
18104.00	90.00	269.62	7112.00	11621.68	-2612.57	-11324.22	40.4069686	-104.8684525	0.00
18133.95	90.00	269.62	7112.00	11650.91	-2612.77	-11354.17	40.4069681	-104.8685600	0.00



Planned Wellpath Report

BOST FARM 34C-11-L (REV-B.0) PWP

Page 1 of 10



REFERENCE WELLPATH IDENTIFICATION

Operator	SRC ENERGY	Slot	SLOT#12 BOST FARM 34C-11-L (2666'FSL & 1274'FWL, SEC.07)
Area	COLORADO	Well	BOST FARM 34C-11-L
Field	WELD COUNTY (NAD83,TRUE NORTH)	Wellbore	BOST FARM 34C-11-L PWB
Facility	SEC.07-T05N-R66W		

REPORT SETUP INFORMATION

Projection System	NAD83 / Lambert Colorado SP, Northern Zone (501), US feet	Software System	WellArchitect® 5.1
North Reference	True	User	Bushjamh
Scale	0.999961	Report Generated	10/18/2018 at 6:41:46 PM
Convergence at slot	0.43° East	Database/Source file	Denver/BOST FARM 34C-11-L (REV-B.0) PWP PR.xml

WELLPATH LOCATION

	Local coordinates		Grid coordinates		Geographic coordinates	
	North[ft]	East[ft]	Easting[US ft]	Northing[US ft]	Latitude	Longitude
Slot Location	113.67	15.86	3187176.59	1394423.57	40°24'50.929"N	104°49'40.044"W
Facility Reference Pt			3187161.59	1394309.79	40°24'49.806"N	104°49'40.249"W
Field Reference Pt			3171284.48	1426358.81	40°30'07.643"N	104°53'02.634"W

WELLPATH DATUM

Calculation method	Minimum curvature	PROPETRO 12 (4') (RKB) to Facility Vertical Datum	4876.00ft
Horizontal Reference Pt	Slot	PROPETRO 12 (4') (RKB) to Mean Sea Level	4876.00ft
Vertical Reference Pt	PROPETRO 12 (4') (RKB)	PROPETRO 12 (4') (RKB) to Mud Line at Slot (SLOT#12 BOST FARM 34C-11-L (2666'FSL & 1274'FWL, SEC.07))	4876.00ft
MD Reference Pt	PROPETRO 12 (4') (RKB)	Section Origin	N 0.00, E 0.00 ft
Field Vertical Reference	Mean Sea Level	Section Azimuth	257.04°



SRC ENERGY

Planned Wellpath Report

BOST FARM 34C-11-L (REV-B.0) PWP

Page 2 of 10

**BAKER
HUGHES**
a GE company



REFERENCE WELLPATH IDENTIFICATION

Operator	SRC ENERGY	Slot	SLOT#12 BOST FARM 34C-11-L (2666'FSL & 1274'FWL, SEC.07)
Area	COLORADO	Well	BOST FARM 34C-11-L
Field	WELD COUNTY (NAD83,TRUE NORTH)	Wellbore	BOST FARM 34C-11-L PWB
Facility	SEC.07-T05N-R66W		

WELLPATH DATA (189 stations) † = interpolated/extrapolated station

MD [ft]	Inclination [°]	Azimuth [°]	TVD [ft]	Vert Sect [ft]	North [ft]	East [ft]	Latitude	Longitude	DLS [°/100ft]	Comments
0.00†	0.000	198.049	0.00	0.00	0.00	0.00	40°24'50.929"N	104°49'40.044"W	0.00	
4.00	0.000	198.049	4.00	0.00	0.00	0.00	40°24'50.929"N	104°49'40.044"W	0.00	Tie On
100.00	0.000	198.049	100.00	0.00	0.00	0.00	40°24'50.929"N	104°49'40.044"W	0.00	End of Tangent
104.00†	0.080	198.049	104.00	0.00	0.00	0.00	40°24'50.929"N	104°49'40.044"W	2.00	
204.00†	2.080	198.049	203.98	0.97	-1.79	-0.58	40°24'50.911"N	104°49'40.052"W	2.00	
304.00†	4.080	198.049	303.83	3.74	-6.90	-2.25	40°24'50.861"N	104°49'40.073"W	2.00	
404.00†	6.080	198.049	403.43	8.30	-15.32	-4.99	40°24'50.778"N	104°49'40.109"W	2.00	
504.00†	8.080	198.049	502.66	14.65	-27.04	-8.81	40°24'50.662"N	104°49'40.158"W	2.00	
604.00†	10.080	198.049	601.40	22.78	-42.04	-13.70	40°24'50.514"N	104°49'40.221"W	2.00	
704.00†	12.080	198.049	699.54	32.68	-60.32	-19.65	40°24'50.333"N	104°49'40.298"W	2.00	
804.00†	14.080	198.049	796.94	44.34	-81.83	-26.67	40°24'50.121"N	104°49'40.389"W	2.00	
904.00†	16.080	198.049	893.49	57.74	-106.57	-34.73	40°24'49.876"N	104°49'40.493"W	2.00	
1004.00†	18.080	198.049	989.07	72.87	-134.49	-43.83	40°24'49.600"N	104°49'40.611"W	2.00	
1104.00†	20.080	198.049	1083.57	89.71	-165.57	-53.95	40°24'49.293"N	104°49'40.742"W	2.00	
1185.68	21.714	198.049	1159.88	104.72	-193.27	-62.98	40°24'49.019"N	104°49'40.858"W	2.00	End of Build
1204.00†	21.714	198.049	1176.90	108.21	-199.71	-65.08	40°24'48.956"N	104°49'40.885"W	0.00	
1304.00†	21.714	198.049	1269.80	127.27	-234.89	-76.54	40°24'48.608"N	104°49'41.034"W	0.00	
1404.00†	21.714	198.049	1362.71	146.33	-270.07	-88.00	40°24'48.261"N	104°49'41.182"W	0.00	
1504.00†	21.714	198.049	1455.61	165.39	-305.24	-99.47	40°24'47.913"N	104°49'41.330"W	0.00	
1604.00†	21.714	198.049	1548.52	184.44	-340.42	-110.93	40°24'47.565"N	104°49'41.478"W	0.00	
1704.00†	21.714	198.049	1641.42	203.50	-375.59	-122.39	40°24'47.218"N	104°49'41.626"W	0.00	
1804.00†	21.714	198.049	1734.33	222.56	-410.77	-133.85	40°24'46.870"N	104°49'41.774"W	0.00	
1904.00†	21.714	198.049	1827.23	241.62	-445.95	-145.32	40°24'46.523"N	104°49'41.923"W	0.00	
2004.00†	21.714	198.049	1920.13	260.68	-481.12	-156.78	40°24'46.175"N	104°49'42.071"W	0.00	
2104.00†	21.714	198.049	2013.04	279.74	-516.30	-168.24	40°24'45.827"N	104°49'42.219"W	0.00	
2204.00†	21.714	198.049	2105.94	298.80	-551.48	-179.71	40°24'45.480"N	104°49'42.367"W	0.00	
2304.00†	21.714	198.049	2198.85	317.86	-586.65	-191.17	40°24'45.132"N	104°49'42.515"W	0.00	
2404.00†	21.714	198.049	2291.75	336.92	-621.83	-202.63	40°24'44.785"N	104°49'42.664"W	0.00	
2504.00†	21.714	198.049	2384.66	355.98	-657.01	-214.09	40°24'44.437"N	104°49'42.812"W	0.00	
2604.00†	21.714	198.049	2477.56	375.04	-692.18	-225.56	40°24'44.089"N	104°49'42.960"W	0.00	



Planned Wellpath Report

BOST FARM 34C-11-L (REV-B.0) PWP

Page 3 of 10



REFERENCE WELLPATH IDENTIFICATION			
Operator	SRC ENERGY	Slot	SLOT#12 BOST FARM 34C-11-L (2666'FSL & 1274'FWL, SEC.07)
Area	COLORADO	Well	BOST FARM 34C-11-L
Field	WELD COUNTY (NAD83,TRUE NORTH)	Wellbore	BOST FARM 34C-11-L PWB
Facility	SEC.07-T05N-R66W		

WELLPATH DATA (189 stations) † = interpolated/extrapolated station										
MD [ft]	Inclination [°]	Azimuth [°]	TVD [ft]	Vert Sect [ft]	North [ft]	East [ft]	Latitude	Longitude	DLS [°/100ft]	Comments
2704.00†	21.714	198.049	2570.47	394.09	-727.36	-237.02	40°24'43.742"N	104°49'43.108"W	0.00	
2804.00†	21.714	198.049	2663.37	413.15	-762.53	-248.48	40°24'43.394"N	104°49'43.256"W	0.00	
2904.00†	21.714	198.049	2756.27	432.21	-797.71	-259.94	40°24'43.047"N	104°49'43.404"W	0.00	
3004.00†	21.714	198.049	2849.18	451.27	-832.89	-271.41	40°24'42.699"N	104°49'43.553"W	0.00	
3104.00†	21.714	198.049	2942.08	470.33	-868.06	-282.87	40°24'42.351"N	104°49'43.701"W	0.00	
3204.00†	21.714	198.049	3034.99	489.39	-903.24	-294.33	40°24'42.004"N	104°49'43.849"W	0.00	
3304.00†	21.714	198.049	3127.89	508.45	-938.42	-305.79	40°24'41.656"N	104°49'43.997"W	0.00	
3404.00†	21.714	198.049	3220.80	527.51	-973.59	-317.26	40°24'41.309"N	104°49'44.145"W	0.00	
3504.00†	21.714	198.049	3313.70	546.57	-1008.77	-328.72	40°24'40.961"N	104°49'44.294"W	0.00	
3604.00†	21.714	198.049	3406.61	565.63	-1043.94	-340.18	40°24'40.613"N	104°49'44.442"W	0.00	
3704.00†	21.714	198.049	3499.51	584.69	-1079.12	-351.64	40°24'40.266"N	104°49'44.590"W	0.00	
3804.00†	21.714	198.049	3592.41	603.75	-1114.30	-363.11	40°24'39.918"N	104°49'44.738"W	0.00	
3904.00†	21.714	198.049	3685.32	622.80	-1149.47	-374.57	40°24'39.571"N	104°49'44.886"W	0.00	
4004.00†	21.714	198.049	3778.22	641.86	-1184.65	-386.03	40°24'39.223"N	104°49'45.034"W	0.00	
4104.00†	21.714	198.049	3871.13	660.92	-1219.83	-397.49	40°24'38.875"N	104°49'45.183"W	0.00	
4204.00†	21.714	198.049	3964.03	679.98	-1255.00	-408.96	40°24'38.528"N	104°49'45.331"W	0.00	
4304.00†	21.714	198.049	4056.94	699.04	-1290.18	-420.42	40°24'38.180"N	104°49'45.479"W	0.00	
4404.00†	21.714	198.049	4149.84	718.10	-1325.35	-431.88	40°24'37.833"N	104°49'45.627"W	0.00	
4504.00†	21.714	198.049	4242.75	737.16	-1360.53	-443.35	40°24'37.485"N	104°49'45.775"W	0.00	
4604.00†	21.714	198.049	4335.65	756.22	-1395.71	-454.81	40°24'37.137"N	104°49'45.923"W	0.00	
4704.00†	21.714	198.049	4428.55	775.28	-1430.88	-466.27	40°24'36.790"N	104°49'46.072"W	0.00	
4804.00†	21.714	198.049	4521.46	794.34	-1466.06	-477.73	40°24'36.442"N	104°49'46.220"W	0.00	
4904.00†	21.714	198.049	4614.36	813.40	-1501.24	-489.20	40°24'36.095"N	104°49'46.368"W	0.00	
5004.00†	21.714	198.049	4707.27	832.45	-1536.41	-500.66	40°24'35.747"N	104°49'46.516"W	0.00	
5104.00†	21.714	198.049	4800.17	851.51	-1571.59	-512.12	40°24'35.399"N	104°49'46.664"W	0.00	
5204.00†	21.714	198.049	4893.08	870.57	-1606.76	-523.58	40°24'35.052"N	104°49'46.812"W	0.00	
5304.00†	21.714	198.049	4985.98	889.63	-1641.94	-535.05	40°24'34.704"N	104°49'46.961"W	0.00	
5404.00†	21.714	198.049	5078.89	908.69	-1677.12	-546.51	40°24'34.357"N	104°49'47.109"W	0.00	
5504.00†	21.714	198.049	5171.79	927.75	-1712.29	-557.97	40°24'34.009"N	104°49'47.257"W	0.00	
5604.00†	21.714	198.049	5264.69	946.81	-1747.47	-569.43	40°24'33.661"N	104°49'47.405"W	0.00	



Planned Wellpath Report

BOST FARM 34C-11-L (REV-B.0) PWP

Page 4 of 10



REFERENCE WELLPATH IDENTIFICATION			
Operator	SRC ENERGY	Slot	SLOT#12 BOST FARM 34C-11-L (2666'FSL & 1274'FWL, SEC.07)
Area	COLORADO	Well	BOST FARM 34C-11-L
Field	WELD COUNTY (NAD83,TRUE NORTH)	Wellbore	BOST FARM 34C-11-L PWB
Facility	SEC.07-T05N-R66W		

WELLPATH DATA (189 stations) † = interpolated/extrapolated station										
MD [ft]	Inclination [°]	Azimuth [°]	TVD [ft]	Vert Sect [ft]	North [ft]	East [ft]	Latitude	Longitude	DLS [°/100ft]	Comments
5704.00†	21.714	198.049	5357.60	965.87	-1782.65	-580.90	40°24'33.314"N	104°49'47.553"W	0.00	
5804.00†	21.714	198.049	5450.50	984.93	-1817.82	-592.36	40°24'32.966"N	104°49'47.702"W	0.00	
5904.00†	21.714	198.049	5543.41	1003.99	-1853.00	-603.82	40°24'32.619"N	104°49'47.850"W	0.00	
6004.00†	21.714	198.049	5636.31	1023.05	-1888.18	-615.28	40°24'32.271"N	104°49'47.998"W	0.00	
6104.00†	21.714	198.049	5729.22	1042.10	-1923.35	-626.75	40°24'31.923"N	104°49'48.146"W	0.00	
6204.00†	21.714	198.049	5822.12	1061.16	-1958.53	-638.21	40°24'31.576"N	104°49'48.294"W	0.00	
6304.00†	21.714	198.049	5915.03	1080.22	-1993.70	-649.67	40°24'31.228"N	104°49'48.442"W	0.00	
6404.00†	21.714	198.049	6007.93	1099.28	-2028.88	-661.14	40°24'30.880"N	104°49'48.591"W	0.00	
6504.00†	21.714	198.049	6100.83	1118.34	-2064.06	-672.60	40°24'30.533"N	104°49'48.739"W	0.00	
6604.00†	21.714	198.049	6193.74	1137.40	-2099.23	-684.06	40°24'30.185"N	104°49'48.887"W	0.00	
6704.00†	21.714	198.049	6286.64	1156.46	-2134.41	-695.52	40°24'29.838"N	104°49'49.035"W	0.00	
6804.00†	21.714	198.049	6379.55	1175.52	-2169.59	-706.99	40°24'29.490"N	104°49'49.183"W	0.00	
6904.00†	21.714	198.049	6472.45	1194.58	-2204.76	-718.45	40°24'29.142"N	104°49'49.331"W	0.00	
7004.00†	21.714	198.049	6565.36	1213.64	-2239.94	-729.91	40°24'28.795"N	104°49'49.479"W	0.00	
7104.00†	21.714	198.049	6658.26	1232.70	-2275.11	-741.37	40°24'28.447"N	104°49'49.628"W	0.00	
7204.00†	21.714	198.049	6751.17	1251.76	-2310.29	-752.84	40°24'28.100"N	104°49'49.776"W	0.00	
7239.20	21.714	198.049	6783.87	1258.46	-2322.67	-756.87	40°24'27.977"N	104°49'49.828"W	0.00	End of Tangent
7304.00†	24.142	211.705	6843.59	1273.97	-2345.36	-767.56	40°24'27.753"N	104°49'49.966"W	9.00	
7404.00†	29.703	227.452	6932.83	1309.96	-2379.58	-796.62	40°24'27.415"N	104°49'50.342"W	9.00	
7504.00†	36.554	238.193	7016.60	1359.79	-2412.10	-840.27	40°24'27.094"N	104°49'50.906"W	9.00	
7604.00†	44.094	245.820	7092.83	1422.23	-2442.11	-897.43	40°24'26.797"N	104°49'51.645"W	9.00	
7704.00†	52.017	251.575	7159.65	1495.74	-2468.87	-966.70	40°24'26.533"N	104°49'52.540"W	9.00	
7804.00†	60.166	256.189	7215.41	1578.50	-2491.73	-1046.37	40°24'26.307"N	104°49'53.570"W	9.00	
7904.00†	68.450	260.098	7258.74	1668.50	-2510.11	-1134.49	40°24'26.125"N	104°49'54.709"W	9.00	
8004.00†	76.815	263.580	7288.57	1763.50	-2523.58	-1228.87	40°24'25.992"N	104°49'55.929"W	9.00	
8104.00†	85.225	266.830	7304.17	1861.16	-2531.80	-1327.20	40°24'25.911"N	104°49'57.200"W	9.00	
8187.49	92.258	269.476	7306.00†	1943.01	-2534.48	-1410.56	40°24'25.884"N	104°49'58.278"W	9.00	End of 3D Arc
8204.00†	92.254	269.476	7305.35	1959.12	-2534.63	-1427.06	40°24'25.883"N	104°49'58.491"W	0.02	
8304.00†	92.231	269.478	7301.44	2056.70	-2535.55	-1526.98	40°24'25.873"N	104°49'59.783"W	0.02	
8404.00†	92.208	269.479	7297.56	2154.28	-2536.46	-1626.90	40°24'25.864"N	104°50'01.075"W	0.02	



Planned Wellpath Report

BOST FARM 34C-11-L (REV-B.0) PWP

Page 5 of 10



REFERENCE WELLPATH IDENTIFICATION			
Operator	SRC ENERGY	Slot	SLOT#12 BOST FARM 34C-11-L (2666'FSL & 1274'FWL, SEC.07)
Area	COLORADO	Well	BOST FARM 34C-11-L
Field	WELD COUNTY (NAD83,TRUE NORTH)	Wellbore	BOST FARM 34C-11-L PWB
Facility	SEC.07-T05N-R66W		

WELLPATH DATA (189 stations) † = interpolated/extrapolated station										
MD [ft]	Inclination [°]	Azimuth [°]	TVD [ft]	Vert Sect [ft]	North [ft]	East [ft]	Latitude	Longitude	DLS [°/100ft]	Comments
8504.00†	92.185	269.481	7293.73	2251.86	-2537.36	-1726.82	40°24'25.855"N	104°50'02.366"W	0.02	
8604.00†	92.163	269.482	7289.94	2349.44	-2538.27	-1826.75	40°24'25.846"N	104°50'03.658"W	0.02	
8704.00†	92.140	269.484	7286.18	2447.02	-2539.17	-1926.67	40°24'25.837"N	104°50'04.950"W	0.02	
8804.00†	92.117	269.485	7282.47	2544.61	-2540.07	-2026.60	40°24'25.828"N	104°50'06.241"W	0.02	
8904.00†	92.094	269.487	7278.80	2642.19	-2540.96	-2126.53	40°24'25.819"N	104°50'07.533"W	0.02	
9004.00†	92.071	269.488	7275.16	2739.78	-2541.86	-2226.46	40°24'25.811"N	104°50'08.825"W	0.02	
9104.00†	92.048	269.490	7271.57	2837.36	-2542.75	-2326.39	40°24'25.802"N	104°50'10.117"W	0.02	
9204.00†	92.025	269.491	7268.02	2934.95	-2543.64	-2426.32	40°24'25.793"N	104°50'11.408"W	0.02	
9304.00†	92.002	269.493	7264.50	3032.54	-2544.52	-2526.26	40°24'25.784"N	104°50'12.700"W	0.02	
9404.00†	91.979	269.494	7261.03	3130.13	-2545.41	-2626.19	40°24'25.775"N	104°50'13.992"W	0.02	
9504.00†	91.956	269.495	7257.60	3227.72	-2546.29	-2726.13	40°24'25.766"N	104°50'15.284"W	0.02	
9604.00†	91.933	269.497	7254.20	3325.31	-2547.17	-2826.07	40°24'25.757"N	104°50'16.576"W	0.02	
9704.00†	91.910	269.498	7250.85	3422.90	-2548.05	-2926.01	40°24'25.749"N	104°50'17.868"W	0.02	
9804.00†	91.887	269.500	7247.54	3520.49	-2548.92	-3025.95	40°24'25.740"N	104°50'19.160"W	0.02	
9904.00†	91.864	269.501	7244.26	3618.08	-2549.79	-3125.89	40°24'25.731"N	104°50'20.452"W	0.02	
10004.00†	91.841	269.503	7241.03	3715.67	-2550.66	-3225.84	40°24'25.722"N	104°50'21.744"W	0.02	
10104.00†	91.819	269.504	7237.84	3813.27	-2551.52	-3325.78	40°24'25.714"N	104°50'23.036"W	0.02	
10204.00†	91.796	269.506	7234.68	3910.86	-2552.39	-3425.73	40°24'25.705"N	104°50'24.328"W	0.02	
10304.00†	91.773	269.507	7231.57	4008.46	-2553.25	-3525.68	40°24'25.696"N	104°50'25.620"W	0.02	
10404.00†	91.750	269.509	7228.50	4106.05	-2554.11	-3625.63	40°24'25.688"N	104°50'26.912"W	0.02	
10504.00†	91.727	269.510	7225.46	4203.65	-2554.96	-3725.58	40°24'25.679"N	104°50'28.204"W	0.02	
10604.00†	91.704	269.512	7222.47	4301.25	-2555.82	-3825.53	40°24'25.671"N	104°50'29.496"W	0.02	
10704.00†	91.681	269.513	7219.52	4398.85	-2556.67	-3925.48	40°24'25.662"N	104°50'30.788"W	0.02	
10804.00†	91.658	269.514	7216.60	4496.44	-2557.52	-4025.43	40°24'25.654"N	104°50'32.080"W	0.02	
10904.00†	91.635	269.516	7213.73	4594.04	-2558.36	-4125.39	40°24'25.645"N	104°50'33.372"W	0.02	
11004.00†	91.612	269.517	7210.90	4691.64	-2559.21	-4225.35	40°24'25.637"N	104°50'34.664"W	0.02	
11104.00†	91.589	269.519	7208.10	4789.24	-2560.05	-4325.30	40°24'25.628"N	104°50'35.956"W	0.02	
11204.00†	91.566	269.520	7205.35	4886.84	-2560.88	-4425.26	40°24'25.620"N	104°50'37.248"W	0.02	
11304.00†	91.543	269.522	7202.64	4984.44	-2561.72	-4525.22	40°24'25.611"N	104°50'38.540"W	0.02	
11404.00†	91.520	269.523	7199.96	5082.05	-2562.55	-4625.18	40°24'25.603"N	104°50'39.833"W	0.02	



SRC ENERGY

Planned Wellpath Report

BOST FARM 34C-11-L (REV-B.0) PWP

Page 6 of 10

**BAKER
HUGHES**
a GE company



REFERENCE WELLPATH IDENTIFICATION

Operator	SRC ENERGY	Slot	SLOT#12 BOST FARM 34C-11-L (2666'FSL & 1274'FWL, SEC.07)
Area	COLORADO	Well	BOST FARM 34C-11-L
Field	WELD COUNTY (NAD83,TRUE NORTH)	Wellbore	BOST FARM 34C-11-L PWB
Facility	SEC.07-T05N-R66W		

WELLPATH DATA (189 stations) † = interpolated/extrapolated station

MD [ft]	Inclination [°]	Azimuth [°]	TVD [ft]	Vert Sect [ft]	North [ft]	East [ft]	Latitude	Longitude	DLS [°/100ft]	Comments
11504.00†	91.497	269.525	7197.33	5179.65	-2563.38	-4725.14	40°24'25.594"N	104°50'41.125"W	0.02	
11604.00†	91.475	269.526	7194.74	5277.25	-2564.21	-4825.11	40°24'25.586"N	104°50'42.417"W	0.02	
11704.00†	91.452	269.528	7192.18	5374.85	-2565.04	-4925.07	40°24'25.578"N	104°50'43.709"W	0.02	
11804.00†	91.429	269.529	7189.67	5472.46	-2565.86	-5025.04	40°24'25.569"N	104°50'45.001"W	0.02	
11904.00†	91.406	269.531	7187.20	5570.06	-2566.68	-5125.00	40°24'25.561"N	104°50'46.294"W	0.02	
12004.00†	91.383	269.532	7184.76	5667.67	-2567.50	-5224.97	40°24'25.553"N	104°50'47.586"W	0.02	
12104.00†	91.360	269.533	7182.37	5765.27	-2568.31	-5324.94	40°24'25.544"N	104°50'48.878"W	0.02	
12204.00†	91.337	269.535	7180.02	5862.88	-2569.13	-5424.91	40°24'25.536"N	104°50'50.170"W	0.02	
12304.00†	91.314	269.536	7177.70	5960.48	-2569.94	-5524.88	40°24'25.528"N	104°50'51.463"W	0.02	
12404.00†	91.291	269.538	7175.43	6058.09	-2570.74	-5624.85	40°24'25.520"N	104°50'52.755"W	0.02	
12504.00†	91.268	269.539	7173.20	6155.69	-2571.55	-5724.82	40°24'25.512"N	104°50'54.047"W	0.02	
12604.00†	91.245	269.541	7171.00	6253.30	-2572.35	-5824.79	40°24'25.503"N	104°50'55.340"W	0.02	
12704.00†	91.222	269.542	7168.85	6350.91	-2573.15	-5924.77	40°24'25.495"N	104°50'56.632"W	0.02	
12804.00†	91.199	269.544	7166.74	6448.51	-2573.95	-6024.74	40°24'25.487"N	104°50'57.924"W	0.02	
12904.00†	91.176	269.545	7164.66	6546.12	-2574.74	-6124.72	40°24'25.479"N	104°50'59.217"W	0.02	
13004.00†	91.153	269.547	7162.63	6643.73	-2575.54	-6224.69	40°24'25.471"N	104°51'00.509"W	0.02	
13104.00†	91.131	269.548	7160.64	6741.34	-2576.33	-6324.67	40°24'25.463"N	104°51'01.801"W	0.02	
13204.00†	91.108	269.550	7158.68	6838.94	-2577.11	-6424.65	40°24'25.455"N	104°51'03.094"W	0.02	
13304.00†	91.085	269.551	7156.77	6936.55	-2577.90	-6524.63	40°24'25.447"N	104°51'04.386"W	0.02	
13404.00†	91.062	269.552	7154.90	7034.16	-2578.68	-6624.60	40°24'25.439"N	104°51'05.678"W	0.02	
13504.00†	91.039	269.554	7153.07	7131.77	-2579.46	-6724.58	40°24'25.431"N	104°51'06.971"W	0.02	
13604.00†	91.016	269.555	7151.27	7229.38	-2580.24	-6824.57	40°24'25.423"N	104°51'08.263"W	0.02	
13704.00†	90.993	269.557	7149.52	7326.99	-2581.01	-6924.55	40°24'25.415"N	104°51'09.556"W	0.02	
13804.00†	90.970	269.558	7147.81	7424.60	-2581.78	-7024.53	40°24'25.407"N	104°51'10.848"W	0.02	
13904.00†	90.947	269.560	7146.13	7522.21	-2582.55	-7124.51	40°24'25.399"N	104°51'12.141"W	0.02	
14004.00†	90.924	269.561	7144.50	7619.81	-2583.32	-7224.50	40°24'25.391"N	104°51'13.433"W	0.02	
14104.00†	90.901	269.563	7142.91	7717.42	-2584.08	-7324.48	40°24'25.384"N	104°51'14.726"W	0.02	
14204.00†	90.878	269.564	7141.36	7815.03	-2584.85	-7424.47	40°24'25.376"N	104°51'16.018"W	0.02	
14304.00†	90.855	269.566	7139.84	7912.64	-2585.61	-7524.45	40°24'25.368"N	104°51'17.311"W	0.02	
14404.00†	90.832	269.567	7138.37	8010.25	-2586.36	-7624.44	40°24'25.360"N	104°51'18.603"W	0.02	



Planned Wellpath Report

BOST FARM 34C-11-L (REV-B.0) PWP

Page 7 of 10



REFERENCE WELLPATH IDENTIFICATION			
Operator	SRC ENERGY	Slot	SLOT#12 BOST FARM 34C-11-L (2666'FSL & 1274'FWL, SEC.07)
Area	COLORADO	Well	BOST FARM 34C-11-L
Field	WELD COUNTY (NAD83,TRUE NORTH)	Wellbore	BOST FARM 34C-11-L PWB
Facility	SEC.07-T05N-R66W		

WELLPATH DATA (189 stations) † = interpolated/extrapolated station										
MD [ft]	Inclination [°]	Azimuth [°]	TVD [ft]	Vert Sect [ft]	North [ft]	East [ft]	Latitude	Longitude	DLS [°/100ft]	Comments
14504.00†	90.810	269.569	7136.94	8107.86	-2587.12	-7724.42	40°24'25.352"N	104°51'19.895"W	0.02	
14604.00†	90.787	269.570	7135.54	8205.47	-2587.87	-7824.41	40°24'25.345"N	104°51'21.188"W	0.02	
14704.00†	90.764	269.571	7134.19	8303.08	-2588.62	-7924.40	40°24'25.337"N	104°51'22.481"W	0.02	
14804.00†	90.741	269.573	7132.88	8400.69	-2589.36	-8024.39	40°24'25.329"N	104°51'23.773"W	0.02	
14904.00†	90.718	269.574	7131.61	8498.30	-2590.11	-8124.38	40°24'25.322"N	104°51'25.066"W	0.02	
15004.00†	90.695	269.576	7130.37	8595.91	-2590.85	-8224.37	40°24'25.314"N	104°51'26.358"W	0.02	
15104.00†	90.672	269.577	7129.18	8693.52	-2591.59	-8324.36	40°24'25.306"N	104°51'27.651"W	0.02	
15204.00†	90.649	269.579	7128.03	8791.13	-2592.33	-8424.35	40°24'25.299"N	104°51'28.943"W	0.02	
15304.00†	90.626	269.580	7126.91	8888.73	-2593.06	-8524.34	40°24'25.291"N	104°51'30.236"W	0.02	
15404.00†	90.603	269.582	7125.84	8986.34	-2593.79	-8624.33	40°24'25.283"N	104°51'31.528"W	0.02	
15504.00†	90.580	269.583	7124.81	9083.95	-2594.52	-8724.32	40°24'25.276"N	104°51'32.821"W	0.02	
15604.00†	90.557	269.585	7123.82	9181.56	-2595.25	-8824.32	40°24'25.268"N	104°51'34.113"W	0.02	
15704.00†	90.534	269.586	7122.86	9279.17	-2595.97	-8924.31	40°24'25.261"N	104°51'35.406"W	0.02	
15804.00†	90.511	269.588	7121.95	9376.78	-2596.69	-9024.30	40°24'25.253"N	104°51'36.699"W	0.02	
15904.00†	90.488	269.589	7121.08	9474.39	-2597.41	-9124.30	40°24'25.246"N	104°51'37.991"W	0.02	
16004.00†	90.466	269.590	7120.25	9571.99	-2598.12	-9224.29	40°24'25.238"N	104°51'39.284"W	0.02	
16104.00†	90.443	269.592	7119.45	9669.60	-2598.84	-9324.28	40°24'25.231"N	104°51'40.576"W	0.02	
16204.00†	90.420	269.593	7118.70	9767.21	-2599.55	-9424.28	40°24'25.224"N	104°51'41.869"W	0.02	
16304.00†	90.397	269.595	7117.99	9864.82	-2600.26	-9524.27	40°24'25.216"N	104°51'43.162"W	0.02	
16404.00†	90.374	269.596	7117.32	9962.42	-2600.96	-9624.27	40°24'25.209"N	104°51'44.454"W	0.02	
16504.00†	90.351	269.598	7116.68	10060.03	-2601.67	-9724.26	40°24'25.202"N	104°51'45.747"W	0.02	
16604.00†	90.328	269.599	7116.09	10157.63	-2602.37	-9824.26	40°24'25.194"N	104°51'47.039"W	0.02	
16704.00†	90.305	269.601	7115.54	10255.24	-2603.06	-9924.26	40°24'25.187"N	104°51'48.332"W	0.02	
16804.00†	90.282	269.602	7115.03	10352.85	-2603.76	-10024.25	40°24'25.180"N	104°51'49.625"W	0.02	
16904.00†	90.259	269.604	7114.56	10450.45	-2604.45	-10124.25	40°24'25.172"N	104°51'50.917"W	0.02	
17004.00†	90.236	269.605	7114.12	10548.06	-2605.14	-10224.25	40°24'25.165"N	104°51'52.210"W	0.02	
17104.00†	90.213	269.607	7113.73	10645.66	-2605.83	-10324.24	40°24'25.158"N	104°51'53.503"W	0.02	
17204.00†	90.190	269.608	7113.38	10743.26	-2606.52	-10424.24	40°24'25.151"N	104°51'54.795"W	0.02	
17304.00†	90.167	269.609	7113.07	10840.87	-2607.20	-10524.24	40°24'25.144"N	104°51'56.088"W	0.02	
17404.00†	90.144	269.611	7112.79	10938.47	-2607.88	-10624.23	40°24'25.137"N	104°51'57.380"W	0.02	



Planned Wellpath Report

BOST FARM 34C-11-L (REV-B.0) PWP

Page 8 of 10



REFERENCE WELLPATH IDENTIFICATION			
Operator	SRC ENERGY	Slot	SLOT#12 BOST FARM 34C-11-L (2666'FSL & 1274'FWL, SEC.07)
Area	COLORADO	Well	BOST FARM 34C-11-L
Field	WELD COUNTY (NAD83,TRUE NORTH)	Wellbore	BOST FARM 34C-11-L PWB
Facility	SEC.07-T05N-R66W		

WELLPATH DATA (189 stations) † = interpolated/extrapolated station										
MD [ft]	Inclination [°]	Azimuth [°]	TVD [ft]	Vert Sect [ft]	North [ft]	East [ft]	Latitude	Longitude	DLS [°/100ft]	Comments
17504.00†	90.122	269.612	7112.56	11036.07	-2608.56	-10724.23	40°24'25.129"N	104°51'58.673"W	0.02	
17604.00†	90.099	269.614	7112.37	11133.67	-2609.23	-10824.23	40°24'25.122"N	104°51'59.966"W	0.02	
17704.00†	90.076	269.615	7112.22	11231.28	-2609.91	-10924.23	40°24'25.115"N	104°52'01.258"W	0.02	
17804.00†	90.053	269.617	7112.11	11328.88	-2610.58	-11024.22	40°24'25.108"N	104°52'02.551"W	0.02	
17904.00†	90.030	269.618	7112.03	11426.48	-2611.24	-11124.22	40°24'25.101"N	104°52'03.844"W	0.02	
18004.00†	90.007	269.620	7112.00	11524.08	-2611.91	-11224.22	40°24'25.094"N	104°52'05.136"W	0.02	
18034.00	90.000	269.620	7112.00 ²	11553.36	-2612.11	-11254.22	40°24'25.092"N	104°52'05.524"W	0.02	End of 3D Arc
18104.00†	90.000	269.620	7112.00	11621.68	-2612.57	-11324.22	40°24'25.087"N	104°52'06.429"W	0.00	
18133.95	90.000	269.620	7112.00 ³	11650.91	-2612.77	-11354.17	40°24'25.085"N	104°52'06.816"W	0.00	End of Tangent

HOLE & CASING SECTIONS - Ref Wellbore: BOST FARM 34C-11-L PWB Ref Wellpath: BOST FARM 34C-11-L (REV-B.0) PWP									
String/Diameter	Start MD [ft]	End MD [ft]	Interval [ft]	Start TVD [ft]	End TVD [ft]	Start N/S [ft]	Start E/W [ft]	End N/S [ft]	End E/W [ft]
13.5in Open Hole	4.00	1750.00	1746.00	4.00	1684.16	0.00	0.00	-391.78	-127.66
9.625in Casing Surface	4.00	1750.00	1746.00	4.00	1684.16	0.00	0.00	-391.78	-127.66
8.5in Open Hole	1750.00	18133.95	16383.95	1684.16	7112.00	-391.78	-127.66	-2612.77	-11354.17



Planned Wellpath Report

BOST FARM 34C-11-L (REV-B.0) PWP

Page 9 of 10



REFERENCE WELLPATH IDENTIFICATION			
Operator	SRC ENERGY	Slot	SLOT#12 BOST FARM 34C-11-L (2666'FSL & 1274'FWL, SEC.07)
Area	COLORADO	Well	BOST FARM 34C-11-L
Field	WELD COUNTY (NAD83,TRUE NORTH)	Wellbore	BOST FARM 34C-11-L PWB
Facility	SEC.07-T05N-R66W		

TARGETS									
Name	MD [ft]	TVD [ft]	North [ft]	East [ft]	Grid East [US ft]	Grid North [US ft]	Latitude	Longitude	Shape
SEC.07-T05N-R66W		0.00	-113.67	-15.86	3187161.59	1394309.79	40°24'49.806"N	104°49'40.249"W	polygon
SEC.11-T05N-R67W		0.00	-113.67	-15.86	3187161.59	1394309.79	40°24'49.806"N	104°49'40.249"W	polygon
SEC.12-T05N-R67W		0.00	-113.67	-15.86	3187161.59	1394309.79	40°24'49.806"N	104°49'40.249"W	polygon
BOST FARM 34C-11-L BHL ON PLAT (53'FSL & 360'FWL, SEC.11)		7112.00	-2612.79	-11354.17	3175843.02	1391724.89	40°24'25.085"N	104°52'06.816"W	point
3) BOST FARM 34C-11-L BHL REV-1 (53'FSL & 360'FWL, SEC.11)	18133.95	7112.00	-2612.77	-11354.17	3175843.02	1391724.91	40°24'25.085"N	104°52'06.816"W	point
BOST FARM 34C-11-L BPZ ON PLAT (55'FSL & 460'FWL, SEC.11)		7112.00	-2612.11	-11254.19	3175942.98	1391726.33	40°24'25.092"N	104°52'05.524"W	point
2) BOST FARM 34C-11-L BPZ REV-1 (55'FSL & 460'FWL, SEC.11)	18034.00	7112.00	-2612.11	-11254.22	3175942.95	1391726.33	40°24'25.092"N	104°52'05.524"W	point
1) BOST FARM 34C-11-L TOP OF PROD REV-1 (124'FSL & 150'FEL, SEC.12)	8187.49	7306.00	-2534.48	-1410.56	3185785.33	1391878.57	40°24'25.884"N	104°49'58.278"W	point
BOST FARM 34C-11-L TOP OF PROD ON PLAT (124'FSL & 150'FEL, SEC.12)		7362.00	-2534.48	-1410.56	3185785.33	1391878.57	40°24'25.884"N	104°49'58.278"W	point

SURVEY PROGRAM - Ref Wellbore: BOST FARM 34C-11-L PWB Ref Wellpath: BOST FARM 34C-11-L (REV-B.0) PWP				
Start MD [ft]	End MD [ft]	Positional Uncertainty Model	Log Name/Comment	Wellbore
4.00	1750.00	BHI NaviTrak (Standard)		BOST FARM 34C-11-L PWB
1750.00	18133.95	BHI AutoTrak Curve (MagCAD+IFR1, Short spacing)		BOST FARM 34C-11-L PWB



Planned Wellpath Report

BOST FARM 34C-11-L (REV-B.0) PWP

Page 10 of 10



REFERENCE WELLPATH IDENTIFICATION			
Operator	SRC ENERGY	Slot	SLOT#12 BOST FARM 34C-11-L (2666'FSL & 1274'FWL, SEC.07)
Area	COLORADO	Well	BOST FARM 34C-11-L
Field	WELD COUNTY (NAD83,TRUE NORTH)	Wellbore	BOST FARM 34C-11-L PWB
Facility	SEC.07-T05N-R66W		

DESIGN COMMENTS				
MD [ft]	Inclination [°]	Azimuth [°]	TVD [ft]	Comment
4.00	0.000	198.049	4.00	Tie On
100.00	0.000	198.049	100.00	End of Tangent
1185.68	21.714	198.049	1159.88	End of Build
7239.20	21.714	198.049	6783.87	End of Tangent
8187.49	92.258	269.476	7306.00	End of 3D Arc
18034.00	90.000	269.620	7112.00	End of 3D Arc
18133.95	90.000	269.620	7112.00	End of Tangent