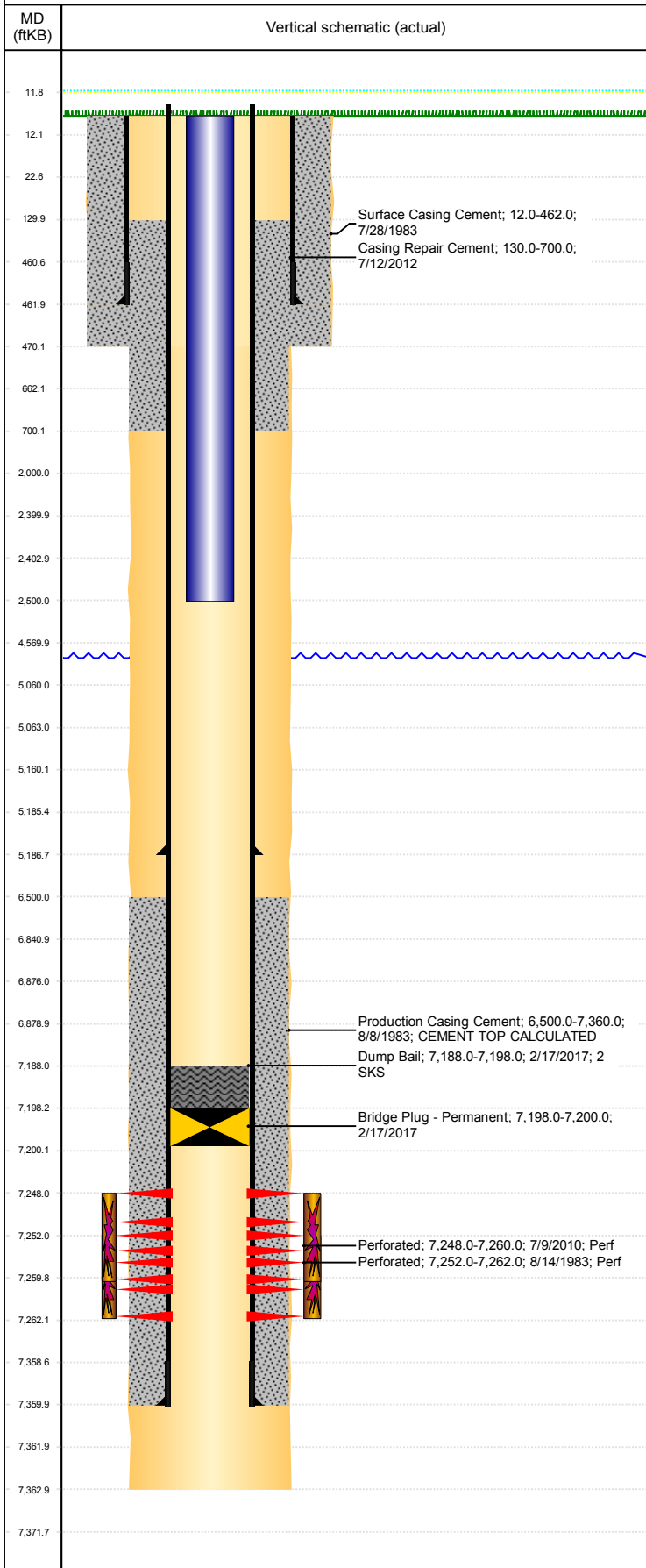


Well Name: MONFORT GILCREST K09-13

VERTICAL, ORIGINAL HOLE, 2/19/2019 4:47:21 PM



Well Header									
API 05-123-11285		Business Unit DJ BASIN			District 15		Well Config VERTICAL		
KB - GL / MSL (ft... 12.00		Spud Date 7/27/1983		P & A Date		Well Production Status TA			SoRT Yes
Comment NO WELLFILE. DATA FROM COGCC WEBSITE									
Surface Location (Congressional)									
Qtr 3 SW	Qtr 4 SW	Section 9	Twonshp 4	Twonsh... N	Range 66	Rng E... W	Actual Latitude (°) 40.32074312	Actual Longitude (°) -104.79031726	
Wellbore Sections									
Section Des			Size (in)			Act Top, MD (ftKB)		Act Btm, MD (ftKB)	
SURFACE			12 1/4			12		470	
PRODUCTION			7 7/8			470		7,363	
Casing Strings									
Csg Des			Run Date		OD (in)	Wt/Len (lb/ft)	Grade	Top, MD (ftKB)	MD (ftKB)
Surface			7/28/1983		8 5/8	24.00		12.0	462.0
Production			7/6/2012		4 1/2	11.60	M-80	11.9	5,186.8
Production			8/8/1983		4 1/2	11.60	?	12.0	7,360.0
Cement									
Des					Start Date		Top (ftKB)		Btm (ftKB)
Surface Casing Cement					7/28/1983		12.0		462.0
Production Casing Cement					8/8/1983		6,500.0		7,360.0
Casing Repair Cement					7/12/2012		130.0		700.0
Dump Bail					2/17/2017		7,188.0		7,198.0
Zone Statuses									
Zone Name		Status Date	Status	Fluid Type	Job			Prod Method	
CODELL		7/25/2012	PR		CASING REPAIR, 6/28/2012 06:00				
CODELL		2/17/2017	AB		HORIZONTAL WELL PREP, 2/16/2017 06:00				
Perforation Data									
Linked Zone			Bnch/Stg	Entered Shot Total	Top (ftKB)		Btm (ftKB)		Date
CODELL, ORIGINAL HOLE				48	7,248.00		7,260.00		7/9/2010
CODELL, ORIGINAL HOLE				21	7,252.00		7,262.00		8/14/1983
Stimulation Intervals									
Zone				Start Date		Top (ftKB)		Btm (ftKB)	
CODELL, ORIGINAL HOLE				7/19/2010		7,248.0		7,260.0	
CODELL, ORIGINAL HOLE				8/18/1983		7,252.0		7,262.0	
Other In Hole									
Run Date		Des				OD (in)	Top (ftKB)	Btm (ftKB)	
2/17/2017		Bridge Plug - Permanent				3.99	7,198.0	7,200.0	
Logs									
Date		Type				Top, MD (ftKB)		Btm, MD (ftKB)	
8/4/1983		COMPENSATED DENSITY				4,700.0		7,361.0	
8/4/1983		INDUCTION				453.0		7,361.0	
8/4/1983		RESERVOIR MONITORING				4,700.0		7,361.0	
7/9/2010		CBL/CCL/GR				6,025.0		7,361.0	
5/21/2013		GYRO				12.0		7,200.0	
Plug Back Total Depths									
Date		Type		Com				Depth (ftKB)	
7/16/2012		FLOAT COLLAR		CLEAN OUT OT PB AFTER CSG PATCH				7,365.0	
5/27/2014		PLUG REMNANTS		TBG TALLY MEASUREMENT.				7,371.8	