

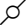







IMAGE COURTESY OF GOOGLE EARTH 2014

**LEGEND**

-  MONITORING WELL
-  DESTROYED MONITORING WELL
-  ABANDONED MONITORING WELL
-  FORMER METER HOUSE
-  SURVEYED GROUNDWATER FLOW DIRECTION
-  RELATIVE GROUNDWATER ELEVATION CONTOUR  
CONTOUR INTERVAL = 0.50 FEET  
GRADIENT = 0.03 FEET/FOOT
-  EXCAVATION EXTENT
-  FORMER BERM

GROUNDWATER ELEVATIONS WERE MEASURED ON APRIL 2, 2018.  
NM: NOT MEASURED

**FIGURE 3A**  
**GROUNDWATER ELEVATION CONTOUR MAP**  
 SECOND QUARTER 2018  
 NISHIMOTO GEORGE GU #1  
 SWNE SEC 36-T3N-R67W  
 WELD COUNTY, COLORADO  
**KERR-MCGEE OIL & GAS ONSHORE LP**



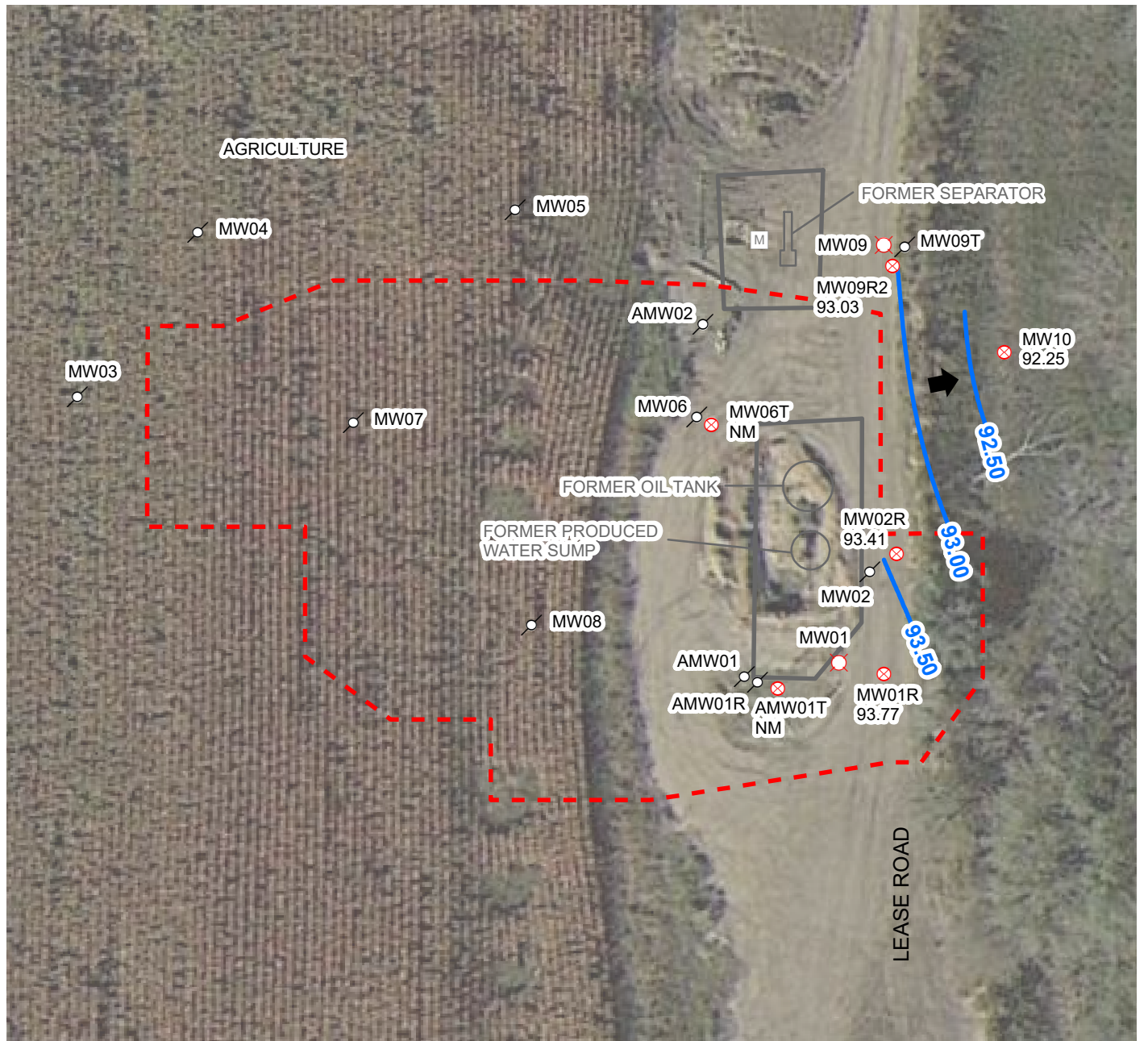


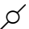







IMAGE COURTESY OF GOOGLE EARTH 2014

**LEGEND**

-  MONITORING WELL
-  DESTROYED MONITORING WELL
-  ABANDONED MONITORING WELL
-  FORMER METER HOUSE
-  SURVEYED GROUNDWATER FLOW DIRECTION
-  RELATIVE GROUNDWATER ELEVATION CONTOUR  
CONTOUR INTERVAL = 0.50 FEET  
GRADIENT = 0.02 FEET/FOOT
-  EXCAVATION EXTENT
-  FORMER BERM

GROUNDWATER ELEVATIONS WERE MEASURED ON JULY 10, 2018.  
NM: NOT MEASURED

**FIGURE 3B**  
**GROUNDWATER ELEVATION CONTOUR MAP**  
 THIRD QUARTER 2018  
 NISHIMOTO GEORGE GU #1  
 SWNE SEC 36-T3N-R67W  
 WELD COUNTY, COLORADO  
**KERR-MCGEE OIL & GAS ONSHORE LP**



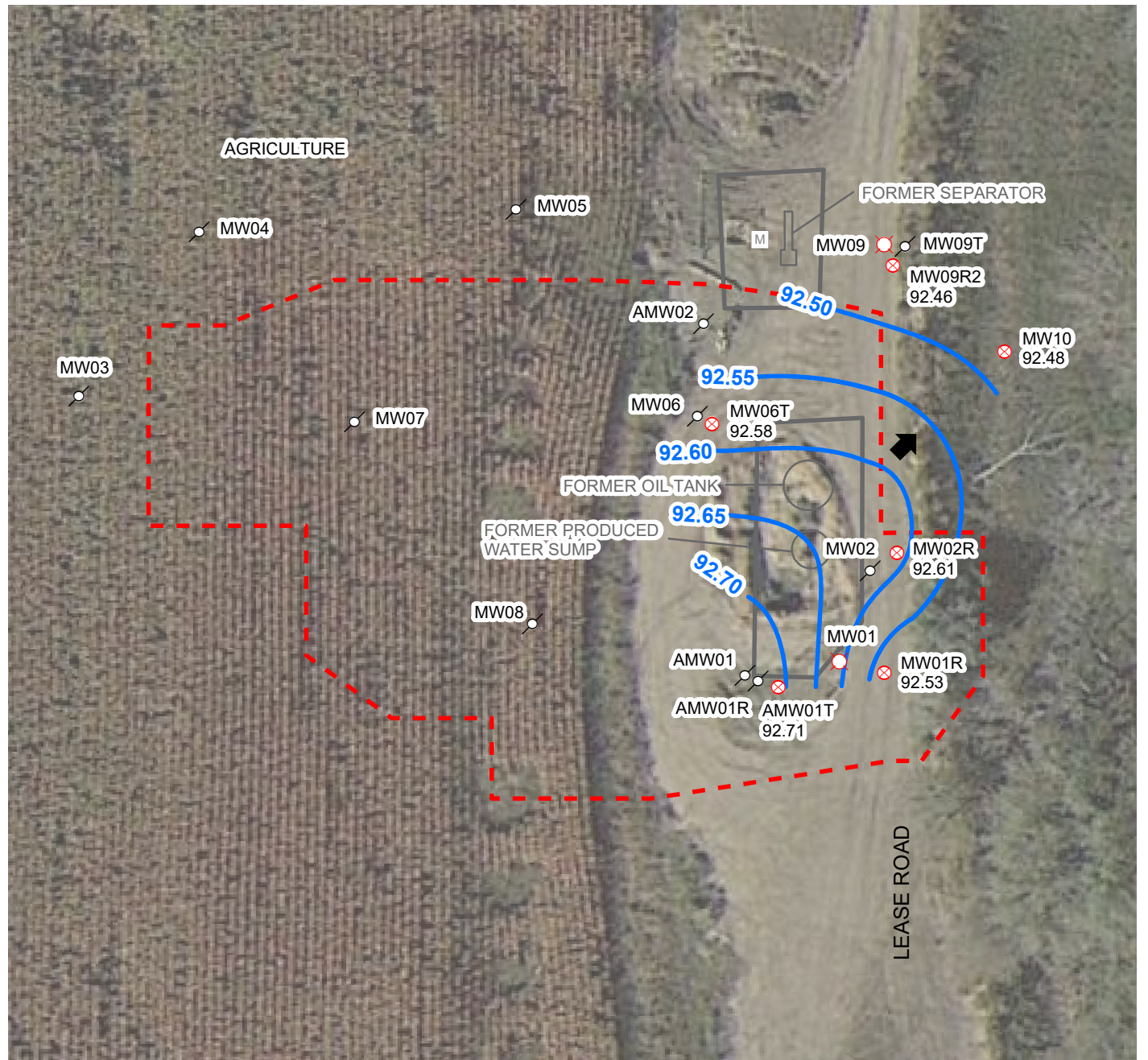


IMAGE COURTESY OF GOOGLE EARTH 2014

**LEGEND**

- ⊗ MONITORING WELL
- ⊗ DESTROYED MONITORING WELL
- ⊗ ABANDONED MONITORING WELL
- M FORMER METER HOUSE
- ↑ SURVEYED GROUNDWATER FLOW DIRECTION
- RELATIVE GROUNDWATER ELEVATION CONTOUR  
CONTOUR INTERVAL = 0.05 FEET  
GRADIENT = 0.002 FEET/FOOT
- EXCAVATION EXTENT
- FORMER BERM

GROUNDWATER ELEVATIONS WERE MEASURED ON OCTOBER 16, 2018.

**FIGURE 3C**  
**GROUNDWATER ELEVATION CONTOUR MAP**  
 FOURTH QUARTER 2018  
 NISHIMOTO GEORGE GU #1  
 SWNE SEC 36-T3N-R67W  
 WELD COUNTY, COLORADO  
**KERR-MCGEE OIL & GAS ONSHORE LP**



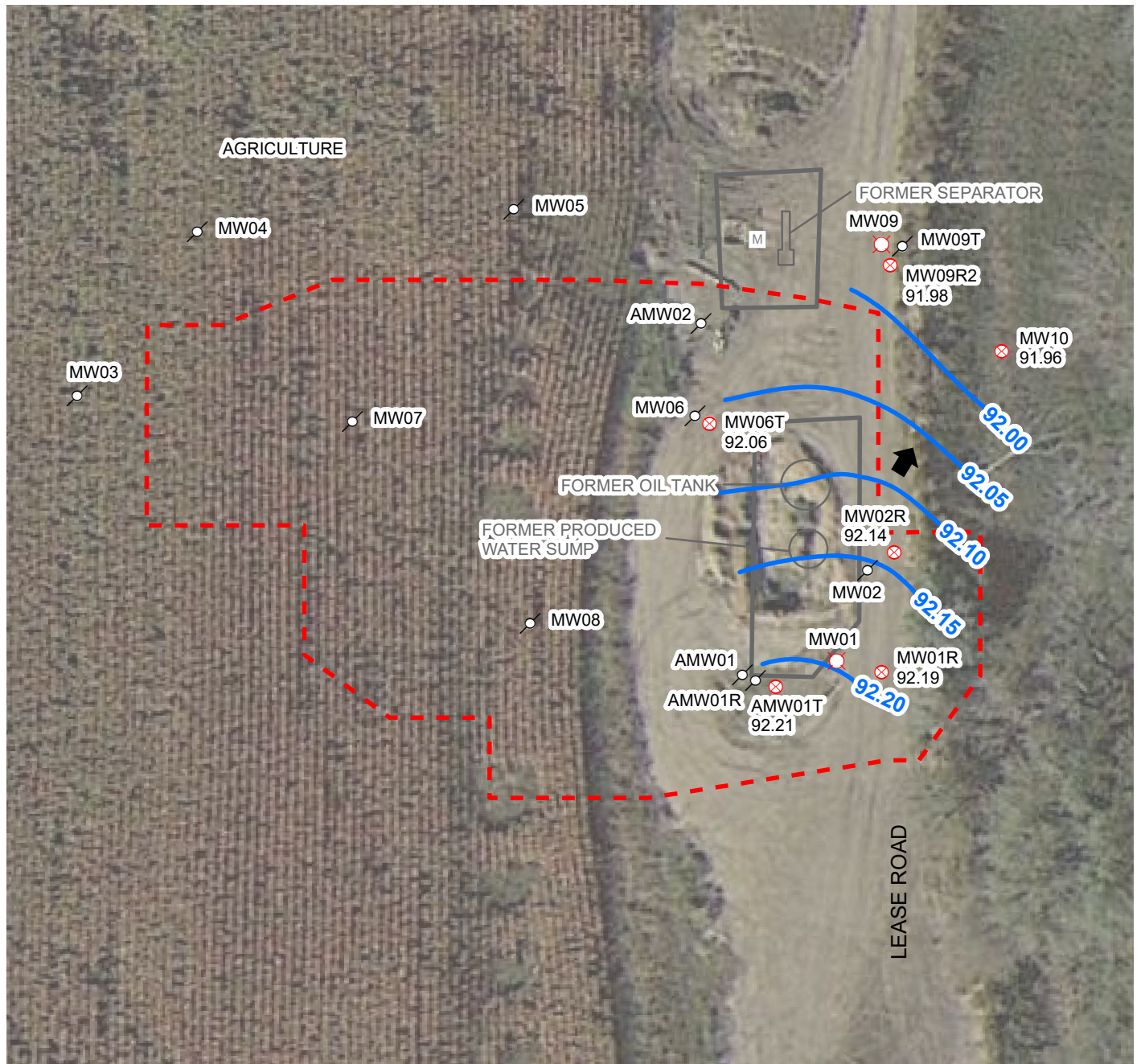








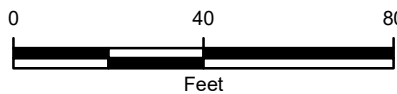


IMAGE COURTESY OF GOOGLE EARTH 2014

**LEGEND**

-  MONITORING WELL
-  DESTROYED MONITORING WELL
-  ABANDONED MONITORING WELL
-  FORMER METER HOUSE
-  SURVEYED GROUNDWATER FLOW DIRECTION
-  RELATIVE GROUNDWATER ELEVATION CONTOUR  
CONTOUR INTERVAL = 0.05 FEET  
GRADIENT = 0.002 FEET/FOOT
-  EXCAVATION EXTENT
-  FORMER BERM

GROUNDWATER ELEVATIONS WERE MEASURED ON JANUARY 8, 2019.



**FIGURE 3D**  
**GROUNDWATER ELEVATION CONTOUR MAP**  
 FIRST QUARTER 2019  
 NISHIMOTO GEORGE GU #1  
 SWNE SEC 36-T3N-R67W  
 WELD COUNTY, COLORADO  
**KERR-MCGEE OIL & GAS ONSHORE LP**

