

Jason S. Allee—On behalf of L&L40, Inc.  
Colorado Licensed Professional Land Surveyor No. 38479 DATE: 9/22/2017  
PROJECT#: 2017079

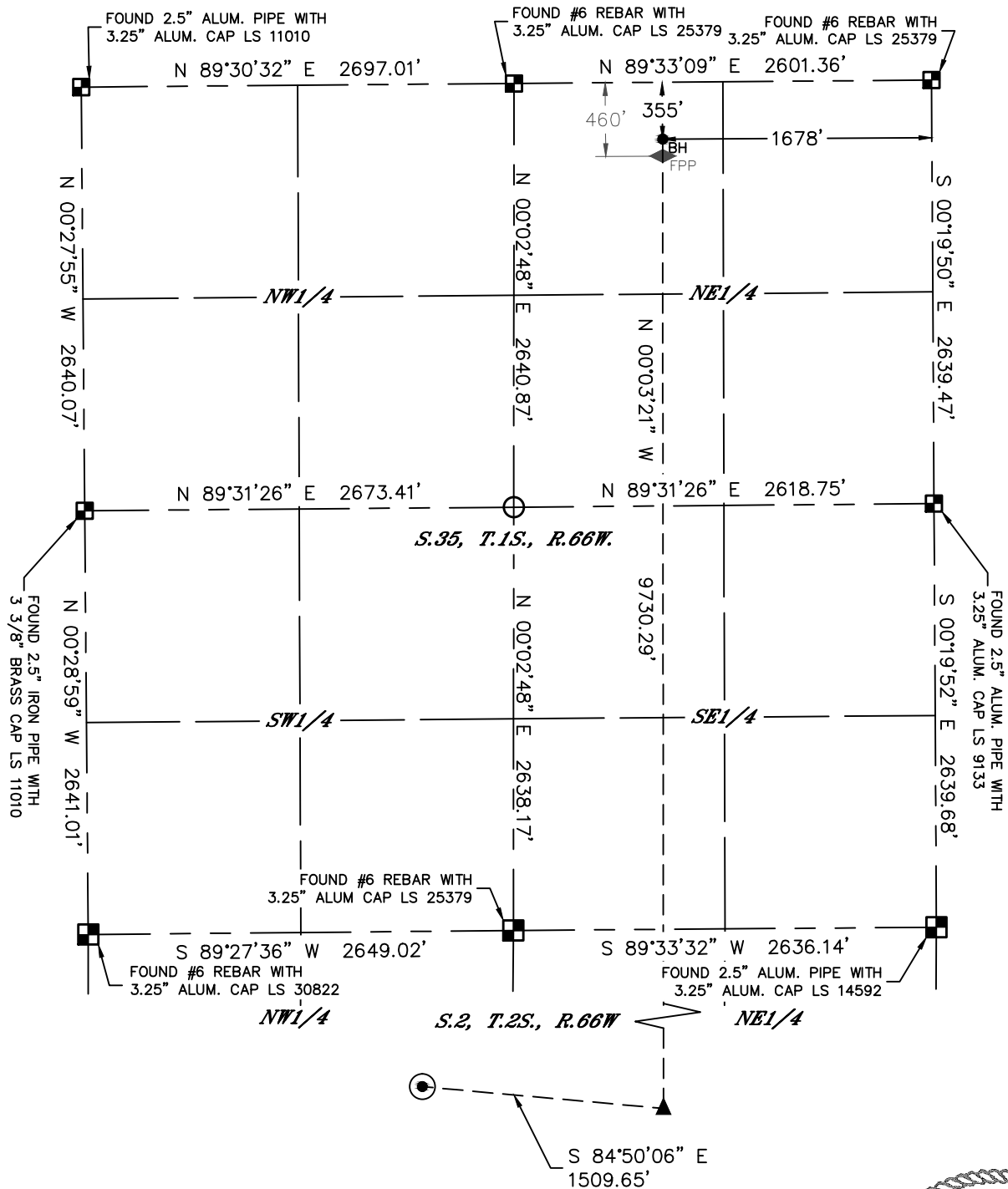


Lat40°, Inc. 6250 W. 10th Street, Unit 2, Greeley, CO 970-515-5294

# WELL LOCATION CERTIFICATE

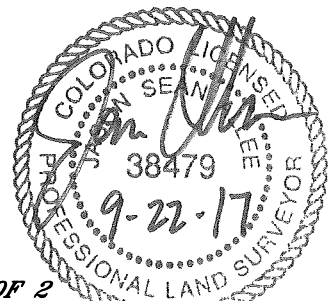
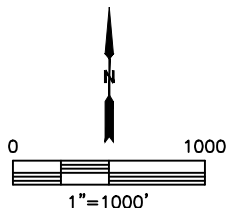
ACKARD NORTH 2-35-3CDH

SECTION: 2  
TOWNSHIP: 2S  
RANGE: 66W  
6TH. P.M.  
ADAMS COUNTY, CO



## LEGEND

- = ALIQUOT MONUMENT AS DESCRIBED
- = CALCULATED POSITION
- ⊙ = SURFACE HOLE LOCATION (SHL)
- ▲ = ENTRY POINT LOCATION (EP)
- ◆ = FIRST PERF. POINT (FPP)
- = BOTTOM HOLE LOCATION (BHL)



**SHEET 2 OF 2**

Jason S. Allee—On behalf of Lat40°, Inc.  
Colorado Licensed Professional Land Surveyor No. 38479  
DATE: 9/22/2017  
PROJECT#: 2017079