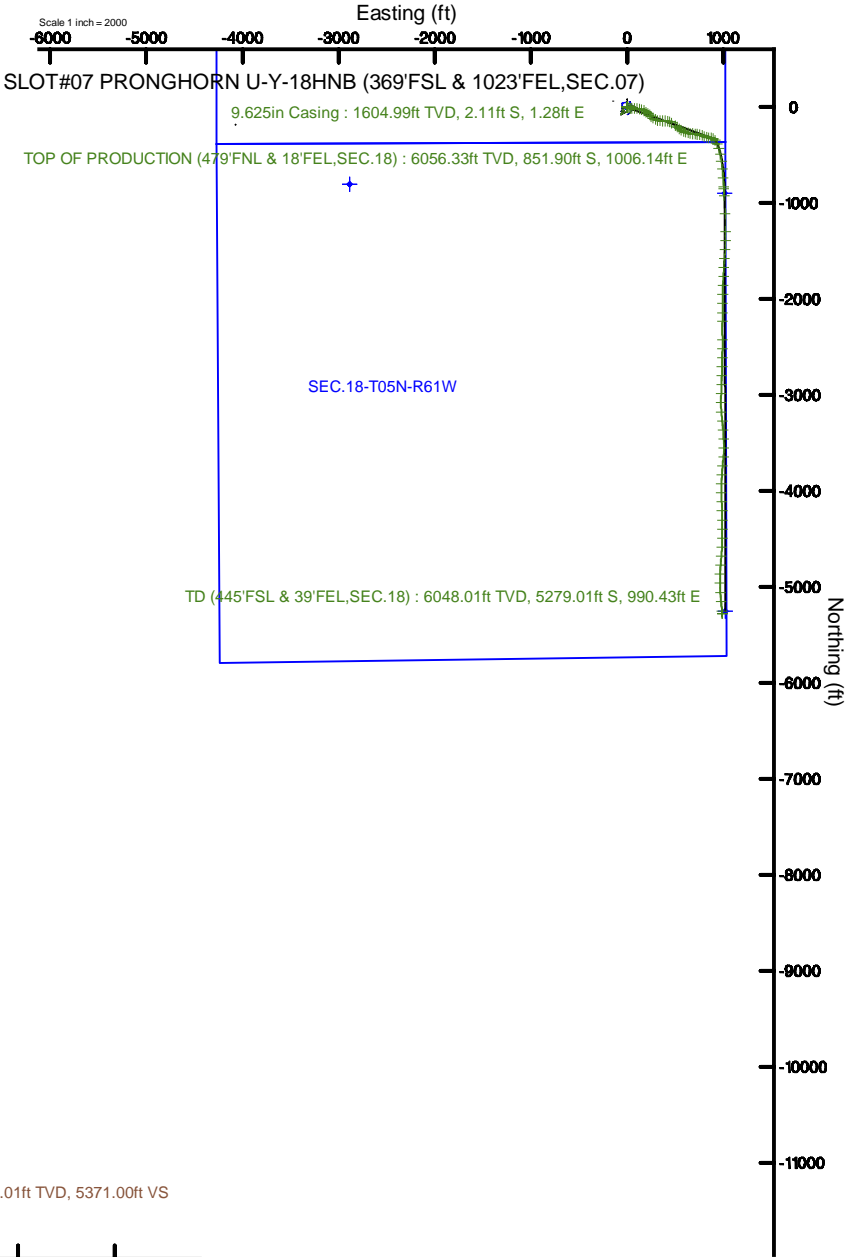
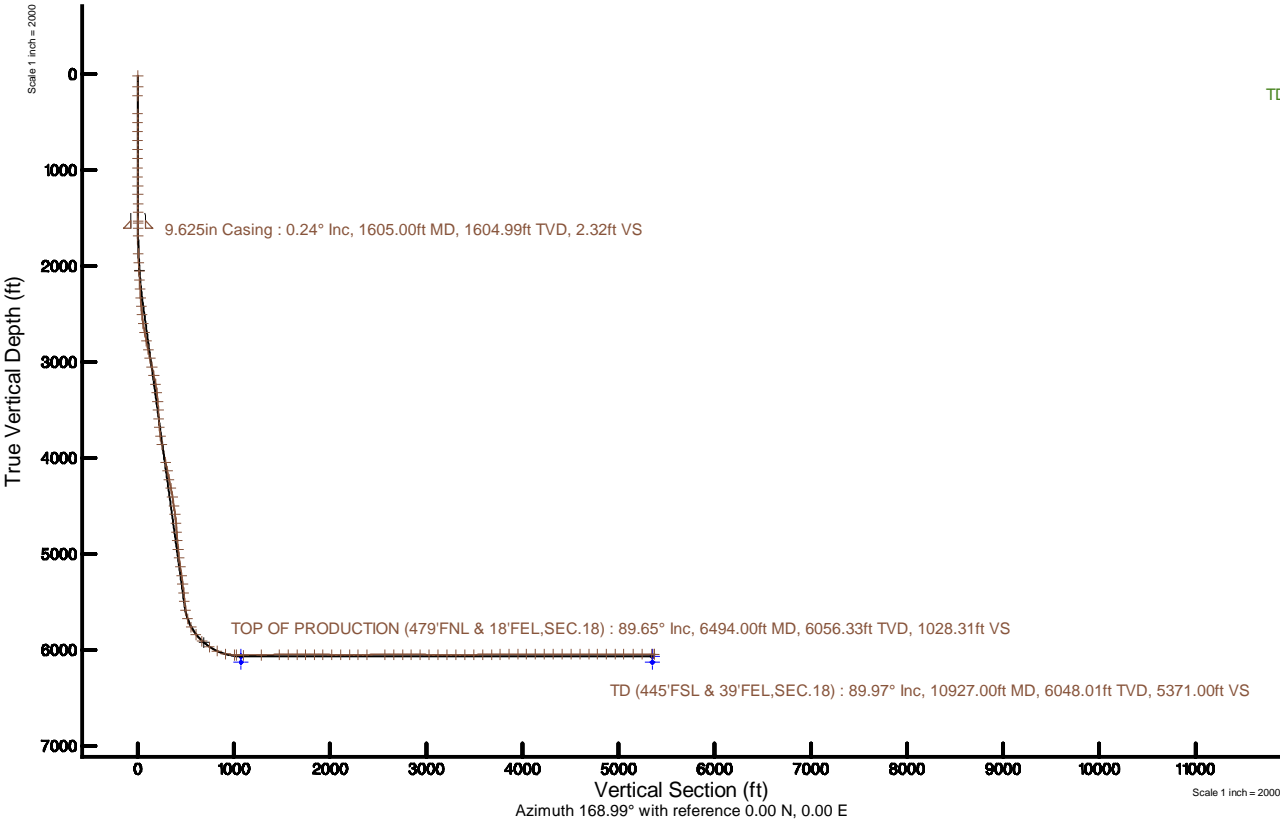


BONANZA CREEK ENERGY

Location: COLORADO Slot: SLOT#07 PRONGHORN U-Y-18HNB (369°FSL & 1023°FEL,SEC.07)
Field: WELD COUNTY (NAD83/TRUE) Well: PRONGHORN U-Y-18HNB
Facility: SEC.07-T05N-R61W Wellbore: PRONGHORN U-Y-18HNB PWB

Plot reference wellpath is PRONGHORN U-Y-18HNB (REV-C.0) PWP	Grid System: NAD83 / Lambert Colorado SP, Northern Zone (501), US feet
True vertical depths are referenced to AKITA 520 (4564'GL+17'KB@4581') (RKB)	North Reference: True north
Measured depths are referenced to AKITA 520 (4564'GL+17'KB@4581') (RKB)	Scale: True distance
AKITA 520 (4564'GL+17'KB@4581') (RKB) to Mean Sea Level: 4581 feet	Depths are in feet
Mean Sea Level to Ground level (At Slot: SLOT#07 PRONGHORN U-Y-18HNB (369°FSL & 1023°FEL,SEC.07)): 0 feet	Created by: bushjarnh on 2019-02-21
Coordinates are in feet referenced to Slot	Database: Denver





Actual Wellpath Report

PRONGHORN U-Y-18HNB AWP

Page 1 of 7



REFERENCE WELLPATH IDENTIFICATION

Operator	BONANZA CREEK ENERGY	Slot	SLOT#07 PRONGHORN U-Y-18HNB (369'FSL & 1023'FEL,SEC.07)
Area	COLORADO	Well	PRONGHORN U-Y-18HNB
Field	WELD COUNTY (NAD83/TRUE)	Wellbore	PRONGHORN U-Y-18HNB AWP
Facility	SEC.07-T05N-R61W		

REPORT SETUP INFORMATION

Projection System	NAD83 / Lambert Colorado SP, Northern Zone (501), US feet	Software System	WellArchitect® 5.1
North Reference	True	User	Bushjamh
Scale	0.999961	Report Generated	2/21/2019 at 5:25:44 PM
Convergence at slot	0.81° East	Database/Source file	Denver/PRONGHORN_U-Y-18HNB_AWP.xml

WELLPATH LOCATION

	Local coordinates		Grid coordinates		Geographic coordinates	
	North[ft]	East[ft]	Easting[US ft]	Northing[US ft]	Latitude	Longitude
Slot Location	182.13	4072.25	3349036.11	1394502.32	40°24'34.340"N	104°14'47.605"W
Facility Reference Pt			3344966.97	1394263.33	40°24'32.544"N	104°15'40.248"W
Field Reference Pt			3224525.77	1254425.87	40°01'44.400"N	104°41'53.556"W

WELLPATH DATUM

Calculation method	Minimum curvature	AKITA 520 (4564'GL+17'KB@4581') (RKB) to Facility Vertical Datum	4581.00ft
Horizontal Reference Pt	Slot	AKITA 520 (4564'GL+17'KB@4581') (RKB) to Mean Sea Level	4581.00ft
Vertical Reference Pt	AKITA 520 (4564'GL+17'KB@4581') (RKB)	AKITA 520 (4564'GL+17'KB@4581') (RKB) to Ground Level at Slot (SLOT#07 PRONGHORN U-Y-18HNB (369'FSL & 1023'FEL,SEC.07))	4581.00ft
MD Reference Pt	AKITA 520 (4564'GL+17'KB@4581') (RKB)	Section Origin	N 0.00, E 0.00 ft
Field Vertical Reference	Mean Sea Level	Section Azimuth	168.99°



Actual Wellpath Report

PRONGHORN U-Y-18HNB AWP

Page 2 of 7



REFERENCE WELLPATH IDENTIFICATION

Operator	BONANZA CREEK ENERGY	Slot	SLOT#07 PRONGHORN U-Y-18HNB (369'FSL & 1023'FEL,SEC.07)
Area	COLORADO	Well	PRONGHORN U-Y-18HNB
Field	WELD COUNTY (NAD83/TRUE)	Wellbore	PRONGHORN U-Y-18HNB AWP
Facility	SEC.07-T05N-R61W		

WELLPATH DATA (114 stations) † = interpolated/extrapolated station

MD [ft]	Inclination [°]	Azimuth [°]	TVD [ft]	Vert Sect [ft]	North [ft]	East [ft]	Latitude	Longitude	DLS [°/100ft]	Comments
0.00†	0.000	344.120	0.00	0.00	0.00	0.00	40°24'34.340"N	104°14'47.605"W	0.00	
17.00	0.000	344.120	17.00	0.00	0.00	0.00	40°24'34.340"N	104°14'47.605"W	0.00	
135.00	0.320	344.120	135.00	-0.33	0.32	-0.09	40°24'34.344"N	104°14'47.606"W	0.27	
228.00	0.250	351.460	228.00	-0.79	0.77	-0.19	40°24'34.348"N	104°14'47.608"W	0.08	
416.00	0.090	100.700	416.00	-1.14	1.15	-0.11	40°24'34.352"N	104°14'47.607"W	0.16	
509.00	0.070	140.800	509.00	-1.07	1.09	0.00	40°24'34.351"N	104°14'47.605"W	0.06	
602.00	0.030	43.120	602.00	-1.03	1.06	0.05	40°24'34.351"N	104°14'47.605"W	0.09	
696.00	0.220	58.650	696.00	-1.11	1.17	0.22	40°24'34.352"N	104°14'47.602"W	0.20	
789.00	0.150	347.590	789.00	-1.29	1.39	0.35	40°24'34.354"N	104°14'47.601"W	0.24	
883.00	0.090	222.360	883.00	-1.37	1.45	0.27	40°24'34.355"N	104°14'47.602"W	0.23	
978.00	0.250	178.030	978.00	-1.12	1.19	0.23	40°24'34.352"N	104°14'47.602"W	0.21	
1072.00	0.320	163.630	1072.00	-0.66	0.73	0.31	40°24'34.348"N	104°14'47.601"W	0.11	
1164.00	0.300	189.540	1163.99	-0.18	0.25	0.34	40°24'34.343"N	104°14'47.601"W	0.15	
1257.00	0.440	155.970	1256.99	0.40	-0.32	0.45	40°24'34.337"N	104°14'47.599"W	0.27	
1351.00	0.340	159.660	1350.99	1.03	-0.91	0.69	40°24'34.331"N	104°14'47.596"W	0.11	
1444.00	0.230	164.530	1443.99	1.48	-1.35	0.84	40°24'34.327"N	104°14'47.594"W	0.12	
1537.00	0.370	147.260	1536.99	1.95	-1.78	1.05	40°24'34.323"N	104°14'47.592"W	0.18	
1557.00	0.420	136.740	1556.99	2.07	-1.89	1.14	40°24'34.322"N	104°14'47.591"W	0.44	
1685.00	0.340	251.020	1684.99	2.52	-2.35	1.10	40°24'34.317"N	104°14'47.591"W	0.50	
1873.00	3.180	114.010	1872.90	5.59	-4.66	5.34	40°24'34.294"N	104°14'47.536"W	1.83	
1966.00	4.690	118.440	1965.67	9.49	-7.52	11.04	40°24'34.266"N	104°14'47.463"W	1.66	
2058.00	6.850	102.900	2057.21	14.10	-10.53	19.69	40°24'34.236"N	104°14'47.351"W	2.88	
2151.00	9.970	95.280	2149.20	18.61	-12.51	33.12	40°24'34.217"N	104°14'47.177"W	3.56	
2245.00	12.980	94.170	2241.31	23.65	-14.03	51.75	40°24'34.202"N	104°14'46.936"W	3.21	
2338.00	16.210	94.350	2331.30	29.83	-15.78	75.12	40°24'34.185"N	104°14'46.634"W	3.47	
2431.00	16.140	92.570	2420.62	36.30	-17.34	100.98	40°24'34.169"N	104°14'46.300"W	0.54	
2525.00	16.070	99.920	2510.94	44.01	-20.17	126.85	40°24'34.141"N	104°14'45.965"W	2.17	
2621.00	15.790	110.340	2603.27	55.56	-27.00	152.19	40°24'34.074"N	104°14'45.638"W	2.99	
2714.00	16.300	123.010	2692.67	71.21	-38.51	175.00	40°24'33.960"N	104°14'45.343"W	3.80	
2808.00	15.400	123.300	2783.10	89.10	-52.55	196.50	40°24'33.821"N	104°14'45.065"W	0.96	



Actual Wellpath Report

PRONGHORN U-Y-18HNB AWP

Page 3 of 7



REFERENCE WELLPATH IDENTIFICATION

Operator	BONANZA CREEK ENERGY	Slot	SLOT#07 PRONGHORN U-Y-18HNB (369'FSL & 1023'FEL,SEC.07)
Area	COLORADO	Well	PRONGHORN U-Y-18HNB
Field	WELD COUNTY (NAD83/TRUE)	Wellbore	PRONGHORN U-Y-18HNB AWP
Facility	SEC.07-T05N-R61W		

WELLPATH DATA (114 stations)

MD [ft]	Inclination [°]	Azimuth [°]	TVD [ft]	Vert Sect [ft]	North [ft]	East [ft]	Latitude	Longitude	DLS [°/100ft]	Comments
2901.00	15.250	128.810	2872.80	107.07	-66.99	216.35	40°24'33.678"N	104°14'44.808"W	1.57	
2994.00	15.150	134.150	2962.55	126.39	-83.13	234.60	40°24'33.519"N	104°14'44.572"W	1.51	
3088.00	15.480	134.290	3053.21	146.78	-100.44	252.40	40°24'33.348"N	104°14'44.342"W	0.35	
3181.00	15.870	125.670	3142.76	166.24	-116.52	271.61	40°24'33.189"N	104°14'44.094"W	2.54	
3275.00	16.430	116.260	3233.07	183.64	-129.90	293.98	40°24'33.057"N	104°14'43.805"W	2.84	
3369.00	15.950	104.550	3323.36	197.26	-139.03	318.41	40°24'32.967"N	104°14'43.489"W	3.50	
3462.00	16.820	96.200	3412.60	206.76	-143.70	344.16	40°24'32.920"N	104°14'43.156"W	2.70	
3556.00	15.170	87.320	3502.97	212.56	-144.59	369.97	40°24'32.912"N	104°14'42.823"W	3.13	
3649.00	15.360	92.010	3592.69	217.10	-144.45	394.44	40°24'32.913"N	104°14'42.506"W	1.34	
3743.00	15.170	101.800	3683.39	224.67	-147.41	418.92	40°24'32.884"N	104°14'42.190"W	2.75	
3837.00	15.240	112.460	3774.12	236.25	-154.64	442.38	40°24'32.812"N	104°14'41.886"W	2.97	
3931.00	15.270	123.710	3864.83	251.78	-166.23	464.10	40°24'32.698"N	104°14'41.606"W	3.14	
4119.00	15.230	127.450	4046.21	287.68	-194.99	504.30	40°24'32.414"N	104°14'41.086"W	0.52	
4214.00	15.450	129.970	4137.83	306.85	-210.71	523.90	40°24'32.258"N	104°14'40.833"W	0.74	
4307.00	15.320	125.190	4227.50	325.34	-225.74	543.44	40°24'32.110"N	104°14'40.580"W	1.37	
4401.00	15.400	123.250	4318.14	343.01	-239.74	564.03	40°24'31.971"N	104°14'40.314"W	0.55	
4495.00	15.620	117.750	4408.72	359.65	-252.48	585.66	40°24'31.845"N	104°14'40.034"W	1.58	
4589.00	15.570	109.160	4499.28	373.91	-262.51	608.78	40°24'31.746"N	104°14'39.735"W	2.46	
4683.00	15.470	107.660	4589.85	386.26	-270.46	632.65	40°24'31.668"N	104°14'39.427"W	0.44	
4778.00	15.470	96.750	4681.43	396.21	-275.79	657.31	40°24'31.615"N	104°14'39.108"W	3.06	
4873.00	14.890	95.410	4773.11	403.52	-278.43	682.04	40°24'31.589"N	104°14'38.788"W	0.71	
4965.00	15.160	96.160	4861.97	410.41	-280.84	705.77	40°24'31.565"N	104°14'38.482"W	0.36	
5060.00	15.320	101.530	4953.63	418.89	-284.68	730.42	40°24'31.527"N	104°14'38.163"W	1.49	
5154.00	15.400	103.430	5044.27	428.81	-290.06	754.72	40°24'31.474"N	104°14'37.849"W	0.54	
5248.00	15.680	111.210	5134.85	440.75	-297.56	778.71	40°24'31.400"N	104°14'37.539"W	2.24	
5343.00	15.610	110.450	5226.33	454.26	-306.67	802.65	40°24'31.310"N	104°14'37.229"W	0.23	
5437.00	14.550	105.690	5317.09	466.17	-314.28	825.87	40°24'31.235"N	104°14'36.929"W	1.73	
5530.00	14.760	102.400	5407.07	476.12	-319.98	848.69	40°24'31.178"N	104°14'36.634"W	0.92	
5624.00	14.970	100.070	5497.92	485.25	-324.68	872.34	40°24'31.132"N	104°14'36.328"W	0.67	
5719.00	14.810	110.690	5589.75	496.04	-331.11	895.78	40°24'31.068"N	104°14'36.025"W	2.87	



Actual Wellpath Report

PRONGHORN U-Y-18HNB AWP

Page 4 of 7



REFERENCE WELLPATH IDENTIFICATION

Operator	BONANZA CREEK ENERGY	Slot	SLOT#07 PRONGHORN U-Y-18HNB (369'FSL & 1023'FEL,SEC.07)
Area	COLORADO	Well	PRONGHORN U-Y-18HNB
Field	WELD COUNTY (NAD83/TRUE)	Wellbore	PRONGHORN U-Y-18HNB AWP
Facility	SEC.07-T05N-R61W		

WELLPATH DATA (114 stations) † = interpolated/extrapolated station

MD [ft]	Inclination [°]	Azimuth [°]	TVD [ft]	Vert Sect [ft]	North [ft]	East [ft]	Latitude	Longitude	DLS [°/100ft]	Comments
5812.00	20.490	139.000	5678.50	516.43	-347.64	917.64	40°24'30.905"N	104°14'35.743"W	10.90	
5907.00	29.210	156.770	5764.73	553.61	-381.60	937.75	40°24'30.569"N	104°14'35.483"W	11.99	
6000.00	38.070	163.810	5842.11	604.47	-430.10	954.74	40°24'30.090"N	104°14'35.263"W	10.40	
6095.00	47.400	168.720	5911.83	668.76	-492.68	969.78	40°24'29.472"N	104°14'35.069"W	10.42	
6189.00	56.420	172.390	5969.77	742.61	-565.58	981.76	40°24'28.751"N	104°14'34.914"W	10.07	
6283.00	66.350	174.100	6014.74	824.79	-647.43	991.40	40°24'27.943"N	104°14'34.790"W	10.68	
6377.00	76.270	175.900	6044.82	913.23	-736.02	999.11	40°24'27.067"N	104°14'34.690"W	10.71	
6471.00	89.780	176.960	6056.21	1005.53	-828.93	1004.89	40°24'26.149"N	104°14'34.615"W	14.42	
6494.00†	89.645	176.835	6056.33	1028.31	-851.90	1006.14	40°24'25.922"N	104°14'34.599"W	0.80	TOP OF PRODUCTION (479'FNL & 18'FEL,SEC.18)
6565.00	89.230	176.450	6057.03	1098.68	-922.77	1010.29	40°24'25.222"N	104°14'34.545"W	0.80	
6754.00	91.420	177.780	6055.95	1285.76	-1111.51	1019.81	40°24'23.357"N	104°14'34.423"W	1.36	
6941.00	91.170	179.980	6051.73	1469.93	-1298.42	1023.46	40°24'21.510"N	104°14'34.375"W	1.18	
7035.00	90.030	181.760	6050.74	1561.90	-1392.39	1022.03	40°24'20.581"N	104°14'34.394"W	2.25	
7130.00	89.510	182.260	6051.12	1654.46	-1487.33	1018.70	40°24'19.643"N	104°14'34.437"W	0.76	
7224.00	89.970	184.300	6051.55	1745.55	-1581.17	1013.32	40°24'18.716"N	104°14'34.507"W	2.22	
7317.00	89.780	183.250	6051.75	1835.47	-1673.97	1007.20	40°24'17.799"N	104°14'34.586"W	1.15	
7411.00	89.720	183.170	6052.16	1926.59	-1767.82	1001.94	40°24'16.871"N	104°14'34.654"W	0.11	
7505.00	89.600	182.310	6052.72	2017.90	-1861.71	997.44	40°24'15.943"N	104°14'34.712"W	0.92	
7598.00	89.910	181.330	6053.12	2108.57	-1954.66	994.49	40°24'15.025"N	104°14'34.750"W	1.11	
7692.00	89.570	180.490	6053.55	2200.55	-2048.65	993.00	40°24'14.096"N	104°14'34.770"W	0.96	
7786.00	90.180	180.440	6053.75	2292.67	-2142.65	992.23	40°24'13.167"N	104°14'34.780"W	0.65	
7879.00	90.710	180.640	6053.03	2383.78	-2235.64	991.36	40°24'12.248"N	104°14'34.791"W	0.61	
8069.00	89.750	178.910	6052.27	2570.42	-2425.63	992.10	40°24'10.371"N	104°14'34.781"W	1.04	
8161.00	90.120	181.300	6052.37	2660.69	-2517.62	991.94	40°24'09.462"N	104°14'34.784"W	2.63	
8255.00	90.090	181.620	6052.20	2752.47	-2611.59	989.54	40°24'08.533"N	104°14'34.815"W	0.34	
8350.00	89.820	180.560	6052.27	2845.36	-2706.57	987.73	40°24'07.595"N	104°14'34.838"W	1.15	
8445.00	90.090	182.610	6052.35	2938.07	-2801.53	985.11	40°24'06.657"N	104°14'34.872"W	2.18	
8538.00	88.770	181.350	6053.27	3028.68	-2894.46	981.89	40°24'05.738"N	104°14'34.914"W	1.96	
8632.00	90.030	182.320	6054.26	3120.32	-2988.41	978.88	40°24'04.810"N	104°14'34.953"W	1.69	
8726.00	90.000	179.960	6054.23	3212.21	-3082.38	977.01	40°24'03.881"N	104°14'34.977"W	2.51	



Actual Wellpath Report

PRONGHORN U-Y-18HNB AWP

Page 5 of 7



REFERENCE WELLPATH IDENTIFICATION

Operator	BONANZA CREEK ENERGY	Slot	SLOT#07 PRONGHORN U-Y-18HNB (369'FSL & 1023'FEL,SEC.07)
Area	COLORADO	Well	PRONGHORN U-Y-18HNB
Field	WELD COUNTY (NAD83/TRUE)	Wellbore	PRONGHORN U-Y-18HNB AWP
Facility	SEC.07-T05N-R61W		

WELLPATH DATA (114 stations)

MD [ft]	Inclination [°]	Azimuth [°]	TVD [ft]	Vert Sect [ft]	North [ft]	East [ft]	Latitude	Longitude	DLS [°/100ft]	Comments
8822.00	90.180	176.070	6054.08	3307.01	-3178.31	980.34	40°24'02.933"N	104°14'34.934"W	4.06	
8916.00	90.150	172.650	6053.81	3400.58	-3271.84	989.57	40°24'02.009"N	104°14'34.814"W	3.64	
9009.00	90.680	175.970	6053.14	3493.17	-3364.36	998.79	40°24'01.095"N	104°14'34.695"W	3.61	
9103.00	90.280	177.090	6052.35	3586.35	-3458.19	1004.48	40°24'00.168"N	104°14'34.622"W	1.27	
9197.00	91.260	180.040	6051.09	3679.02	-3552.14	1006.84	40°23'59.239"N	104°14'34.592"W	3.31	
9291.00	91.230	185.470	6049.04	3770.27	-3645.97	1002.32	40°23'58.312"N	104°14'34.650"W	5.78	
9385.00	90.250	185.710	6047.83	3860.34	-3739.51	993.17	40°23'57.388"N	104°14'34.768"W	1.07	
9479.00	90.120	183.330	6047.52	3950.90	-3833.22	985.76	40°23'56.462"N	104°14'34.864"W	2.54	
9573.00	90.340	182.000	6047.15	4042.24	-3927.11	981.39	40°23'55.534"N	104°14'34.921"W	1.43	
9667.00	90.220	178.870	6046.69	4134.36	-4021.09	980.67	40°23'54.605"N	104°14'34.930"W	3.33	
9761.00	89.660	176.950	6046.79	4227.22	-4115.03	984.10	40°23'53.677"N	104°14'34.886"W	2.13	
9854.00	89.880	178.390	6047.16	4319.15	-4207.95	987.88	40°23'52.759"N	104°14'34.837"W	1.57	
9950.00	89.660	179.090	6047.54	4413.76	-4303.92	989.99	40°23'51.810"N	104°14'34.810"W	0.76	
10044.00	89.820	179.660	6047.97	4506.22	-4397.92	991.02	40°23'50.882"N	104°14'34.796"W	0.63	
10138.00	89.970	181.380	6048.14	4598.32	-4491.91	990.17	40°23'49.953"N	104°14'34.807"W	1.84	
10232.00	90.090	183.200	6048.09	4689.80	-4585.83	986.41	40°23'49.025"N	104°14'34.856"W	1.94	
10326.00	90.220	185.090	6047.84	4780.53	-4679.58	979.62	40°23'48.098"N	104°14'34.944"W	2.02	
10420.00	90.060	184.590	6047.61	4870.96	-4773.24	971.68	40°23'47.173"N	104°14'35.046"W	0.56	
10515.00	90.090	181.760	6047.49	4963.05	-4868.09	966.42	40°23'46.236"N	104°14'35.115"W	2.98	
10609.00	90.310	179.180	6047.16	5055.16	-4962.08	965.65	40°23'45.307"N	104°14'35.125"W	2.75	
10704.00	89.510	175.720	6047.31	5149.12	-5056.97	969.88	40°23'44.369"N	104°14'35.070"W	3.74	
10799.00	89.850	174.770	6047.84	5243.55	-5151.64	977.75	40°23'43.434"N	104°14'34.968"W	1.06	
10902.00	89.970	174.010	6048.00	5346.09	-5254.14	987.82	40°23'42.421"N	104°14'34.838"W	0.75	
10927.00	89.970	174.010	6048.01	5371.00	-5279.01	990.43	40°23'42.175"N	104°14'34.804"W	0.00	TD (445'FSL & 39'FEL,SEC.18)



Actual Wellpath Report

PRONGHORN U-Y-18HNB AWP

Page 6 of 7



REFERENCE WELLPATH IDENTIFICATION			
Operator	BONANZA CREEK ENERGY	Slot	SLOT#07 PRONGHORN U-Y-18HNB (369'FSL & 1023'FEL,SEC.07)
Area	COLORADO	Well	PRONGHORN U-Y-18HNB
Field	WELD COUNTY (NAD83/TRUE)	Wellbore	PRONGHORN U-Y-18HNB AWP
Facility	SEC.07-T05N-R61W		

HOLE & CASING SECTIONS - Ref Wellbore: PRONGHORN U-Y-18HNB AWP Ref Wellpath: PRONGHORN U-Y-18HNB AWP									
String/Diameter	Start MD [ft]	End MD [ft]	Interval [ft]	Start TVD [ft]	End TVD [ft]	Start N/S [ft]	Start E/W [ft]	End N/S [ft]	End E/W [ft]
9.625in Casing	17.00	1605.00	1588.00	17.00	1604.99	0.00	0.00	-2.11	1.28

TARGETS								
Name	TVD [ft]	North [ft]	East [ft]	Grid East [US ft]	Grid North [US ft]	Latitude	Longitude	Shape
PRONGHORN U-Y-18HNB BHL REV-1 (470'FSL & 10'FEL, SEC.18)	6069.00	-5253.10	1021.57	3350131.78	1389264.41	40°23'42.431"N	104°14'34.402"W	point
PRONGHORN U-Y-18HNB LP REV-1 (531'FNL & 10'FEL, SEC.18)	6069.00	-896.33	1014.50	3350063.14	1393620.46	40°24'25.483"N	104°14'34.491"W	point
PRONGHORN U-Y-18HNB BHL (470'FSL & 10'FEL, SEC.18)	6131.00	-5253.10	1021.55	3350131.77	1389264.40	40°23'42.431"N	104°14'34.402"W	point
PRONGHORN U-Y-18HNB LP (531'FNL & 10'FEL, SEC.18)	6131.00	-896.33	1014.52	3350063.16	1393620.46	40°24'25.483"N	104°14'34.491"W	point
SEC.06-T05N-R61W	11999.00	-804.60	-2886.01	3346161.88	1393657.05	40°24'26.388"N	104°15'24.912"W	polygon
SEC.07-T05N-R61W	11999.00	-804.60	-2886.01	3346161.88	1393657.05	40°24'26.388"N	104°15'24.912"W	polygon
SEC.18-T05N-R61W	11999.00	-804.60	-2886.01	3346161.88	1393657.05	40°24'26.388"N	104°15'24.912"W	polygon

WELLPATH COMPOSITION - Ref Wellbore: PRONGHORN U-Y-18HNB AWP Ref Wellpath: PRONGHORN U-Y-18HNB AWP				
Start MD [ft]	End MD [ft]	Positional Uncertainty Model	Log Name/Comment	Wellbore
17.00	1557.00	BHI NaviTrak (Rotating+Axial Corr)	BHI NAVITRAK (ROTATING+AXIAL CORR) <135-1557>	PRONGHORN U-Y-18HNB AWP
1557.00	10902.00	BHI AutoTrak Curve (Axial Corr, Short spacing)	BHI AUTOTRAK CURVE (AXIAL CORR, SHORT SPACING) <1685-10902>	PRONGHORN U-Y-18HNB AWP
10902.00	10927.00	Blind Drilling (std)	Projection to bit	PRONGHORN U-Y-18HNB AWP



Actual Wellpath Report
PRONGHORN U-Y-18HNB AWP
Page 7 of 7



REFERENCE WELLPATH IDENTIFICATION			
Operator	BONANZA CREEK ENERGY	Slot	SLOT#07 PRONGHORN U-Y-18HNB (369'FSL & 1023'FEL,SEC.07)
Area	COLORADO	Well	PRONGHORN U-Y-18HNB
Field	WELD COUNTY (NAD83/TRUE)	Wellbore	PRONGHORN U-Y-18HNB AWP
Facility	SEC.07-T05N-R61W		

WELLPATH COMMENTS				
MD [ft]	Inclination [°]	Azimuth [°]	TVD [ft]	Comment
6494.00	89.645	176.835	6056.33	TOP OF PRODUCTION (479'FNL & 18'FEL,SEC.18)
10927.00	89.970	174.010	6048.01	TD (445'FSL & 39'FEL,SEC.18)