

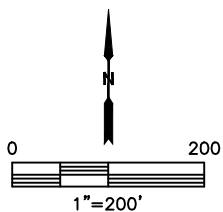
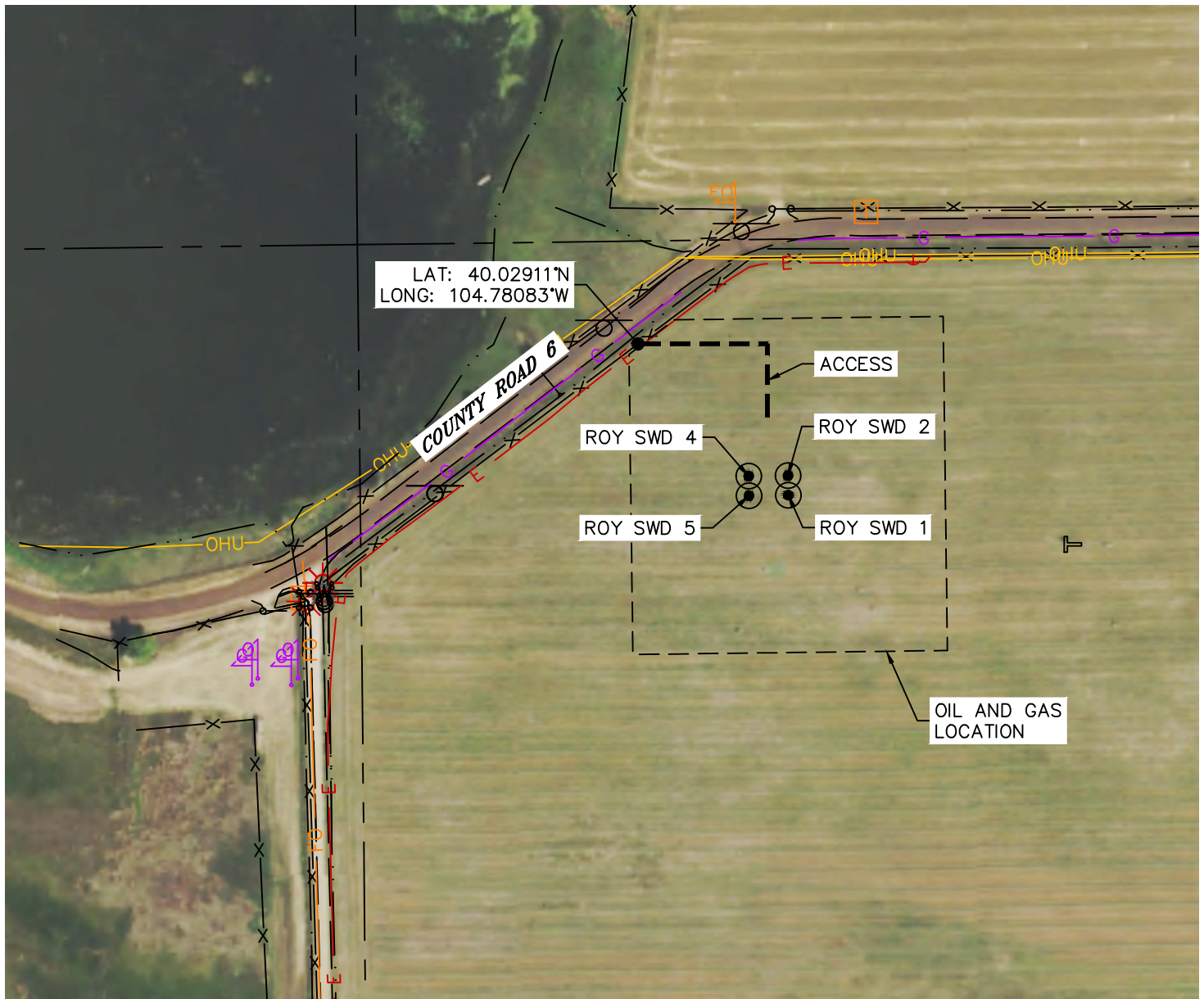


Lat40°, Inc. 6250 W. 10th Street, Unit 2, Greeley, CO 970-515-5294

ACCESS POINT MAP

ROY SWD 1, ROY SWD 2, ROY SWD 4 & ROY SWD 5

SECTION: 28
TOWNSHIP: 1N
RANGE: 66W
6TH. P.M.
WELD COUNTY, CO





Lat40°, Inc. 6250 W. 10th Street, Unit 2, Greeley, CO 970-515-5294

ACCESS POINT PICTURES

ROY SWD 1, ROY SWD 2, ROY SWD 4 & ROY SWD 5

SECTION: 28
TOWNSHIP: 1N
RANGE: 66W
6TH. P.M.
WELD COUNTY, CO
DATE: 2/22/2019



VIEW NORTHEAST (CR 6)



VIEW EAST



VIEW SOUTHWEST (CR 6)