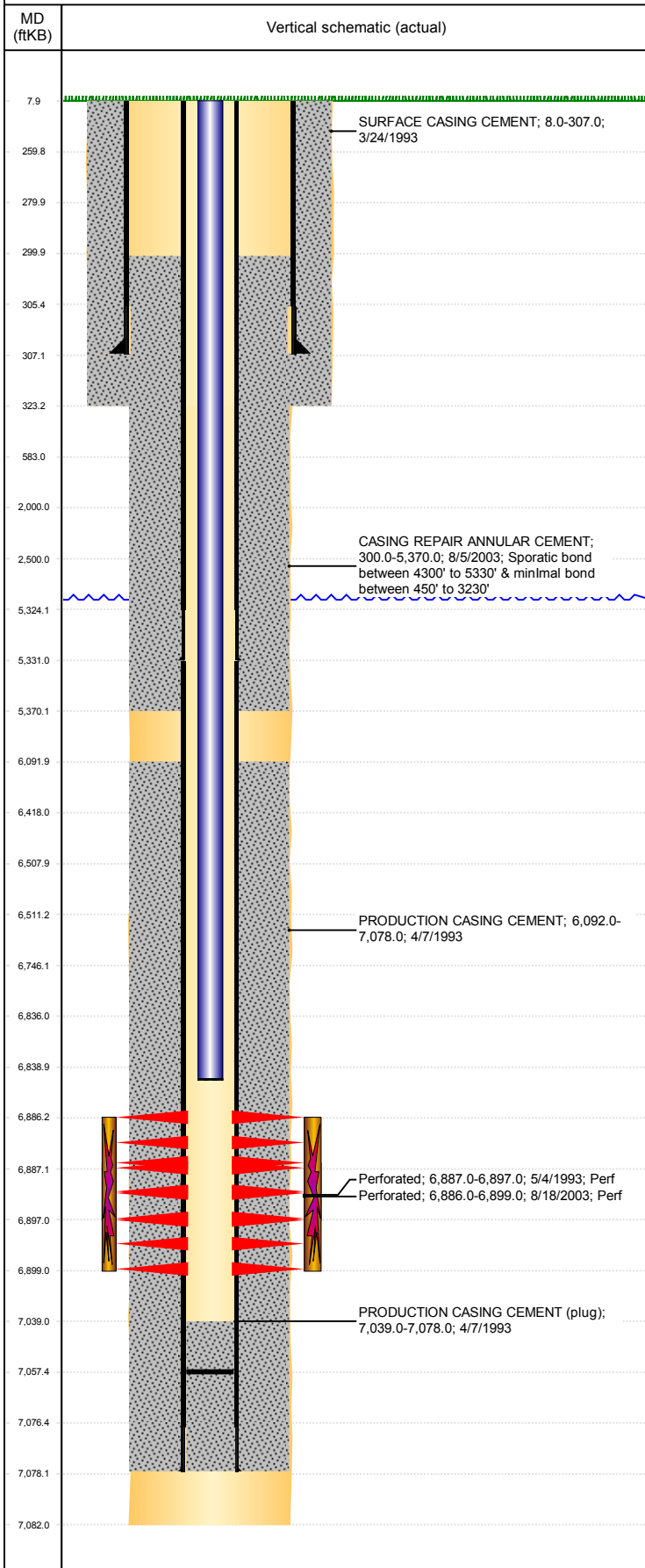


Well Name: KUIS C05-01

VERTICAL, ORIGINAL HOLE, 2/8/2019 12:54:55 PM



Well Header									
API 05-123-16882		Business Unit DJ BASIN		District 15		Well Config VERTICAL			
KB - GL / MSL (ft... 8.00		Spud Date 3/24/1993		P & A Date		Well Production Status PR		SoRT No	
Comment CSG RPR 7/03, PATCH @ 5327'									
Surface Location (Congressional)									
Qtr 3 NE	Qtr 4 NE	Section 5	Twtnshp 4	Twtnsh... N	Range 64	Rng E/... W	Actual Latitude (°) 40.34720219	Actual Longitude (°) -104.56729643	
Wellbore Sections									
Section Des			Size (in)			Act Top, MD (ftKB)		Act Btm, MD (ftKB)	
SURFACE			12 1/4			8		323	
PRODUCTION			7 7/8			323		7,082	
Casing Strings									
Csg Des		Run Date		OD (in)	Wt/Len (lb/ft)	Grade	Top, MD (ftKB)	MD (ftKB)	
Surface		3/24/1993		8 5/8	24.00		8.0	307.0	
Production		7/31/2003		2 7/8	6.50	N-80	8.0	5,331.0	
Production		4/6/1993		2 7/8	6.50	N-80	8.0	7,078.0	
Cement									
Des				Start Date		Top (ftKB)		Btm (ftKB)	
SURFACE CASING CEMENT				3/24/1993		8.0		307.0	
PRODUCTION CASING CEMENT				4/7/1993		6,092.0		7,078.0	
CASING REPAIR ANNULAR CEMENT				8/5/2003		300.0		5,370.0	
Zone Statuses									
Zone Name	Status Date	Status	Fluid Type	Job				Prod Method	
CODELL	8/29/2003	PR		RE-FRAC, 5/20/2003 00:00					
CODELL	3/9/2012	PR		TRI-FRAC, 1/25/2012 10:30					
Perforation Data									
Linked Zone		Bnch/Stg	Entered Shot Total	Top (ftKB)		Btm (ftKB)		Date	
CODELL, ORIGINAL HOLE			52	6,886.00		6,899.00		8/18/2003	
CODELL, ORIGINAL HOLE			40	6,887.00		6,897.00		5/4/1993	
Stimulation Intervals									
Zone			Start Date			Top (ftKB)		Btm (ftKB)	
CODELL, ORIGINAL HOLE			8/28/2003			6,886.0		6,899.0	
CODELL, ORIGINAL HOLE			5/4/1993			6,887.0		6,897.0	
CODELL, ORIGINAL HOLE			2/10/2012						
Other In Hole									
Run Date		Des				OD (in)	Top (ftKB)	Btm (ftKB)	
Logs									
Date		Type				Top, MD (ftKB)		Btm, MD (ftKB)	
4/6/1993		COMPENSATED DENSITY				6,200.0		6,964.0	
4/6/1993		DUAL INDUCTION				4,100.0		4,350.0	
5/4/1993		CBL/CCL/GR				6,000.0		7,032.0	
8/15/2003		CBL/CCL/GR				510.0		4,420.0	
3/10/2017		GYRO				0.0		6,800.0	
Plug Back Total Depths									
Date		Type		Com				Depth (ftKB)	
2/15/2006		FILL		C/O & LAND TBG				6,954.0	
1/27/2012		FILL		C/O 213JTS IN HOLE B/S				7,057.3	