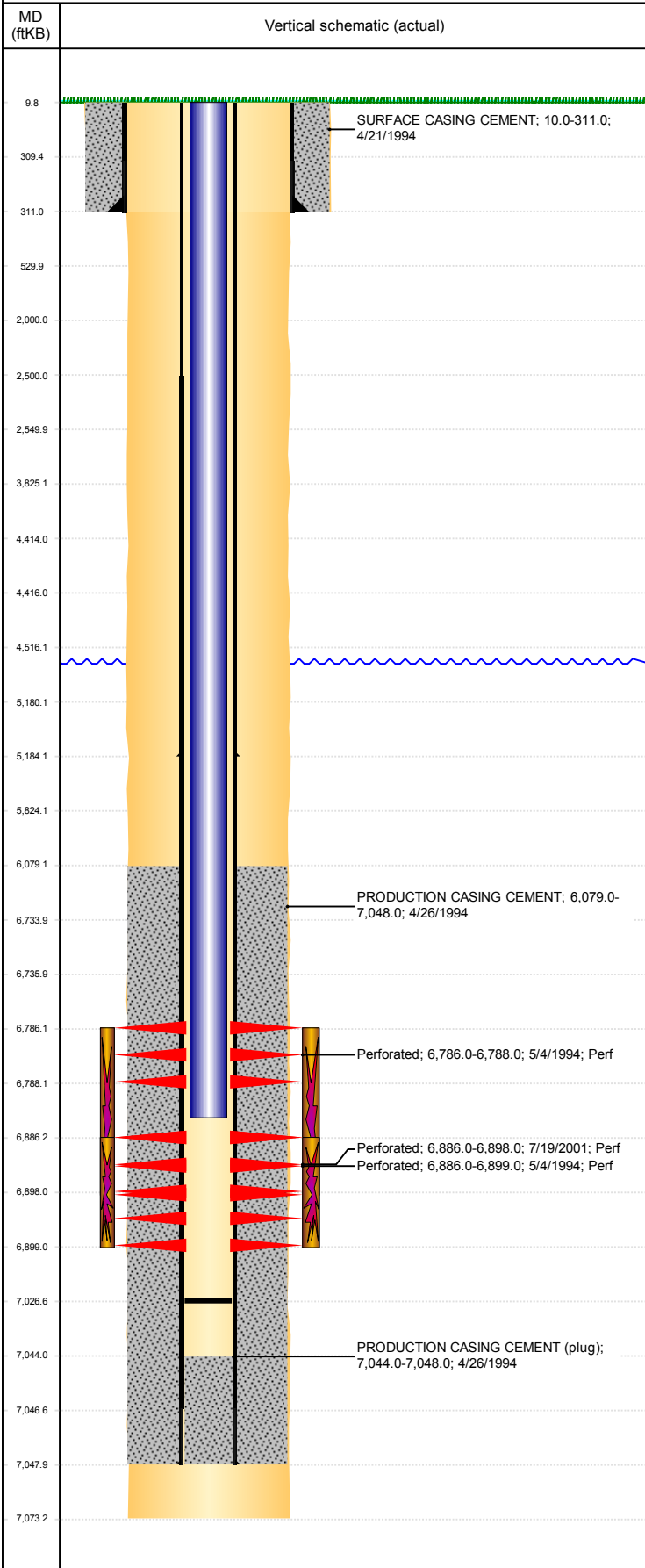


Well Name: BLAKE B29-10X

VERTICAL, ORIGINAL HOLE, 2/8/2019 8:49:39 AM



Well Header									
API 05-123-18221		Business Unit DJ BASIN			District 15		Well Config VERTICAL		
KB - GL / MSL (ft... 10.00		Spud Date 4/21/1994		P & A Date		Well Production Status SI		SoRT No	
Comment									
Surface Location (Congressional)									
Qtr 3 NW	Qtr 4 SE	Section 29	Twncshp 5	Twncsh... N	Range 64	Rng E... W	Actual Latitude (°) 40.36870127	Actual Longitude (°) -104.57170668	
Wellbore Sections									
Section Des		Size (in)		Act Top, MD (ftKB)		Act Btm, MD (ftKB)			
SURFACE		12 1/4		10		311			
PRODUCTION		7 7/8		311		7,073			
Casing Strings									
Csg Des		Run Date	OD (in)	Wt/Len (lb/ft)	Grade	Top, MD (ftKB)	MD (ftKB)		
Surface		4/21/1994	8 5/8	24.00		10.0	311.0		
Production		9/2/1998	2 7/8	9.20	N-80	10.0	5,184.0		
Production		4/26/1994	2 7/8	6.50	N-80	10.0	7,048.0		
Cement									
Des		Start Date		Top (ftKB)		Btm (ftKB)			
SURFACE CASING CEMENT		4/21/1994		10.0		311.0			
PRODUCTION CASING CEMENT		4/26/1994		6,079.0		7,048.0			
Zone Statuses									
Zone Name	Status Date	Status	Fluid Type	Job			Prod Method		
CODELL	10/2/2008	PR	Gas	TRI-FRAC, 8/7/2008 06:00					
CODELL	2/3/2010	PR	Water				Flowing		
NIOBRARA	6/6/2016	PR							
NIOBRARA	5/9/2017	SI							
Perforation Data									
Linked Zone	Bnch/Stg	Entered Shot Total	Top (ftKB)	Btm (ftKB)	Date				
NIOBRARA, ORIGINAL HOLE		6	6,786.00	6,788.00	5/4/1994				
CODELL, ORIGINAL HOLE		16	6,886.00	6,899.00	5/4/1994				
CODELL, ORIGINAL HOLE		48	6,886.00	6,898.00	7/19/2001				
Stimulation Intervals									
Zone		Start Date		Top (ftKB)		Btm (ftKB)			
NIOBRARA-CODELL, ORIGINAL HOLE		5/5/1994		6,786.0		6,899.0			
CODELL, ORIGINAL HOLE		7/26/2001		6,886.0		6,898.0			
CODELL, ORIGINAL HOLE		8/25/2008		6,886.0		6,899.0			
Other In Hole									
Run Date	Des		OD (in)	Top (ftKB)	Btm (ftKB)				
Logs									
Date	Type			Top, MD (ftKB)	Btm, MD (ftKB)				
4/25/1994	COMPENSATED DENSITY			4,100.0	7,073.0				
4/25/1994	INDUCTION			300.0	4,450.0				
5/4/1994	CEMENT BOND			5,900.0	6,984.0				
2/7/2017	GYRO			0.0	6,800.0				
Plug Back Total Depths									
Date	Type	Com			Depth (ftKB)				
4/25/1994					7,044.0				
8/28/2008	FILL	C/O DN TO 7026.73' WITH 22' IN ON JT 215 / 127.73' OF RAT...			7,026.7				