

FOR OGCC USE ONLY

APR - 9 1999

COLO. OIL & GAS CONS. COMM

ET ☐ OE ☒ PR ☐ ES ☐

## COMPLETED INTERVAL REPORT

This form is to be submitted or updated each time a new formation is completed or abandoned. This form shall be transmitted within thirty (30) days of work. Additional information is found under Rule 308. Complete a section for each formation completed or recompleted including all attempted completions. Attach as many pages as required to fully describe the work.

### Complete the Attachment Checklist

OGCC Operator Number: 72085  
Name of Operator: Prima Oil & Gas Company  
Address: 1801 Broadway, Suite 500  
City: Denver State: CO Zip: 80202  
API Number: 05- 12316490  
Well Name: Briggs Number: 1-14  
Location (QtrQtr, Sec, Twp, Rng, Meridian): SENE Sec. 1-T3N-R67W

	Oper	OGCC
Wellbore diagram		
Site Facility Diagram		

List in order of completion.

FORMATION: Codell Producing ☒ Y ☐ N ☐ Commingled ☐ OGCC PR 0

Perforations Gross Interval: Top Bottom No. Holes: Size: Open Hole Completion ☐

Reshot 7285' 7295' 40 2 1/2" RTG

Formation Treatment Describe:  
Inject 840 gals of clayfix into Codell, broke @2953 psi, refrac'd Codell w/10,300# of 100 mesh, 292,000# of 20-40 sand, and 8000# of 12-20 Acfax Black, using 80 B0 and 137,500 gals. of 27# and 25# Prima gell.

Test Information	Date: 1/22/99	Hours: 24	Bbls Oil: 11	MCF Gas: 227	Bbls H2O: 3
Production Test Method: Flowing	Casing Pressure: 730#	Flowing Tubing Pressure: 350#	Choke Size 14/64		
API Gravity Oil:	BTU Gas:	Gas Disposition: Sold			
Calculated 24 Hr Rate	Bbls Oil: 11	MCF Gas: 227	Bbls H2O: 3	GOR: 20,636	

Production Method: Flwoing

Tubing Size: 2 3/8" Setting Depth: 7294' Packer Depth:

Non-producing Completion Status: ☐ Abd ☐ SI Reason shut in:

Abandonment of Zone Date: Squeezed: Sacks Cement:

Bridge Plug Depth: Sacks Cement on Top:

FORMATION: Producing ☐ Y ☐ N ☐ Commingled ☐ OGCC

Perforations Gross Interval: Top Bottom No. Holes: Size: Open Hole Completion ☐

Formation Treatment Describe:

Test Information Date: Hours: Bbls Oil: MCF Gas: Bbls H2O:

Production Test Method: Casing Pressure: Flowing Tubing Pressure: Choke Size

API Gravity Oil: BTU Gas: Gas Disposition:

Calculated 24 Hr Rate Bbls Oil: MCF Gas: Bbls H2O: GOR:

Production Method:

Tubing Size: Setting Depth: Packer Depth:

Non-producing Completion Status: ☐ Abd ☐ SI Reason shut in:

Abandonment of Zone Date: Squeezed: Sacks Cement:

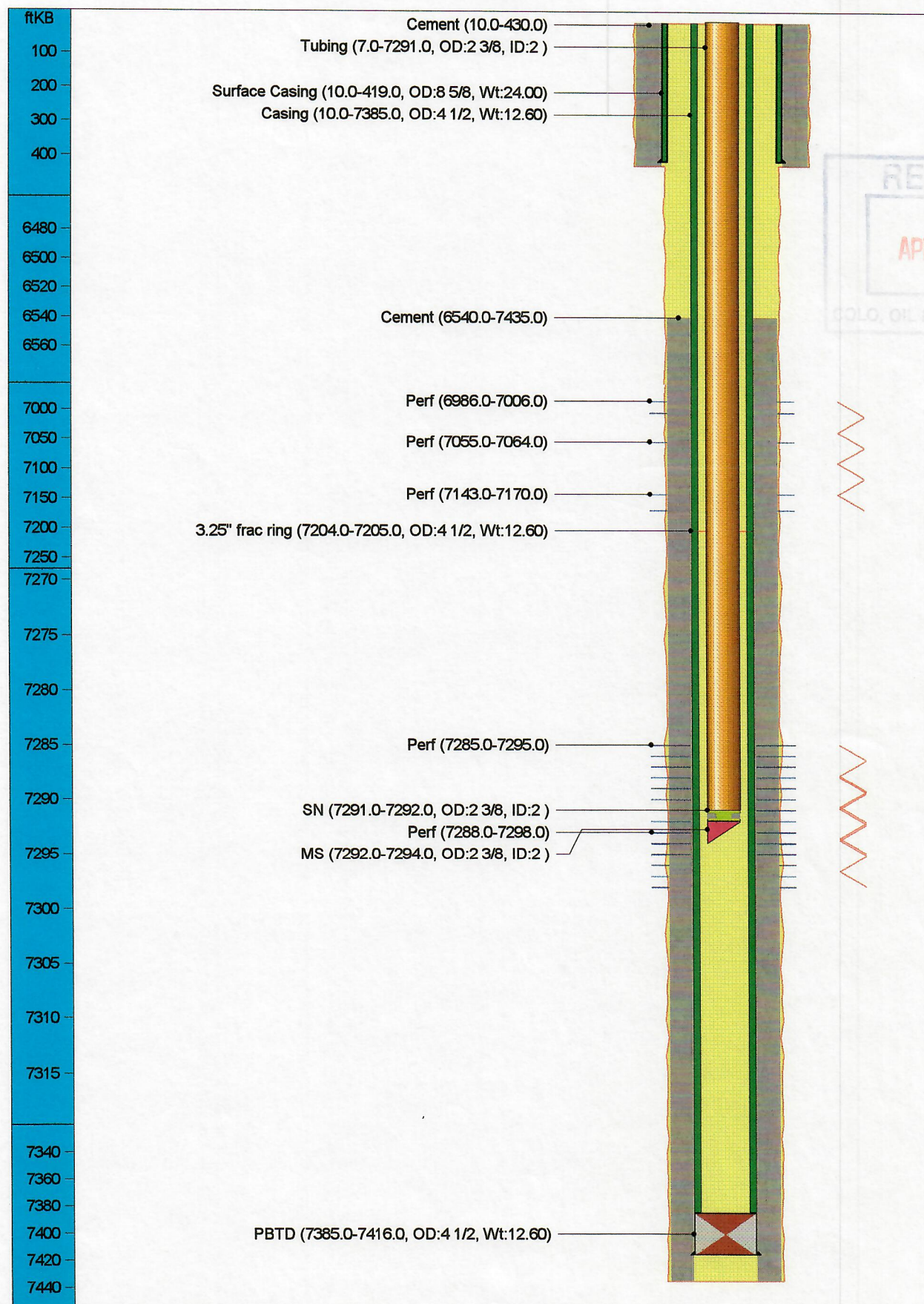
Bridge Plug Depth: Sacks Cement on Top:

I hereby certify that the statements made in this form are, to the best of my knowledge, true, correct, and complete.

Print Name Georganne Mitchell

Signed Georganne Mitchell Title: Operations Assistant Date: 4/6/99







## BRIGGS 1-14

## PRIMA OIL &amp; GAS CO

APR - 9 1999

3/3/99

## BRIGGS 1-14

API Code	051231649000	Field Code	676378712
TD	7435.0 ftKB	Basin	DENVER BASIN
PBTD	7435.0 ftKB	Basin Code	540
Operator	PRIMA OIL & GAS CO	Permit	17-Nov-92
State	COLORADO	Spud	11-Dec-92
County	WELD	Finish Drl	17-Dec-92
Permit No.	92-1693	Completion	15-Apr-93
TD Measured	7435	Abandon	
Reservoir			
Field	WATTENBERG		

## Elevations

KB	4790.0 ft	Cas Flng	
Grd	4779.0 ft	Tub Head	
KB-Grd	11.0 ft		

## Bore Hole Data

Depth (ftKB)	Size (in)
430.0	12 1/4
7435.0	7 7/8

## Casing String - Surface Casing

Item (in)	Btm (ftKB)	Jnts	ID	Wt	Grd	Thd
8 5/8 in Surface Casing	419.0	9	0	24.00		

## Casing String - Production Casing

Item (in)	Btm (ftKB)	Jnts	ID	Wt	Grd	Thd
4 1/2 in Casing	7385.0	236	3 61/64	12.60	N-80	
4 1/2 in 3.25" frac ring	7205.0		3 61/64	12.60		
4 1/2 in PBTD	7416.0		3 61/64	12.60		

## Casing Cement

Casing String	Top (ftKB)	Amount (sx)	Comments
Surface Casing	10.0	280	
Production Casing	6540.0	150	

## Perforations

Date	Int	Zone	Shots (/ft)	Type
17-Nov-92	6986.0 - 7006.0		0.0	6 shots
17-Nov-92	7055.0 - 7064.0		0.0	4 shots
17-Nov-92	7143.0 - 7170.0		0.0	6 shots
17-Nov-92	7288.0 - 7298.0		4.0	2 1/2" RTG
05-Jan-99	7285.0 - 7295.0		4.0	reperf Codell for refrac w/ 2 1/2" RTG

## Stimulations &amp; Treatments

Date	Type	stm.user1	stm.user2	Comments
10-Feb-93	BJ Serv Ball & Baffle frac, Niobrara half	79,254 gal , 1000 gal 7 1/2% Hcl	190,000# 20/40, 5500# 12/20 Acfrac	
06-Jan-99	Halliburton Primagel refrac	137,500 gal 27 and 25# Prima gel, 80 BO	292,000# 20/40, 8000# 12/20 Acfrac	
10-Feb-93	Codell half	116,172 gal	332,000 20/40, 7500# 12/20 Acfrac	

## Tubing String - Tbg

Item (in)	Top (ftKB)	Len (ft)	Jnts	ID (in)	Wt	Grd	Thd
2 3/8 in Tubing	7.0	7284.0	232	2	4.70	J-55	
2 3/8 in SN	7291.0	1.0		2	4.70	J-55	
2 3/8 in MS	7292.0	2.0		2			