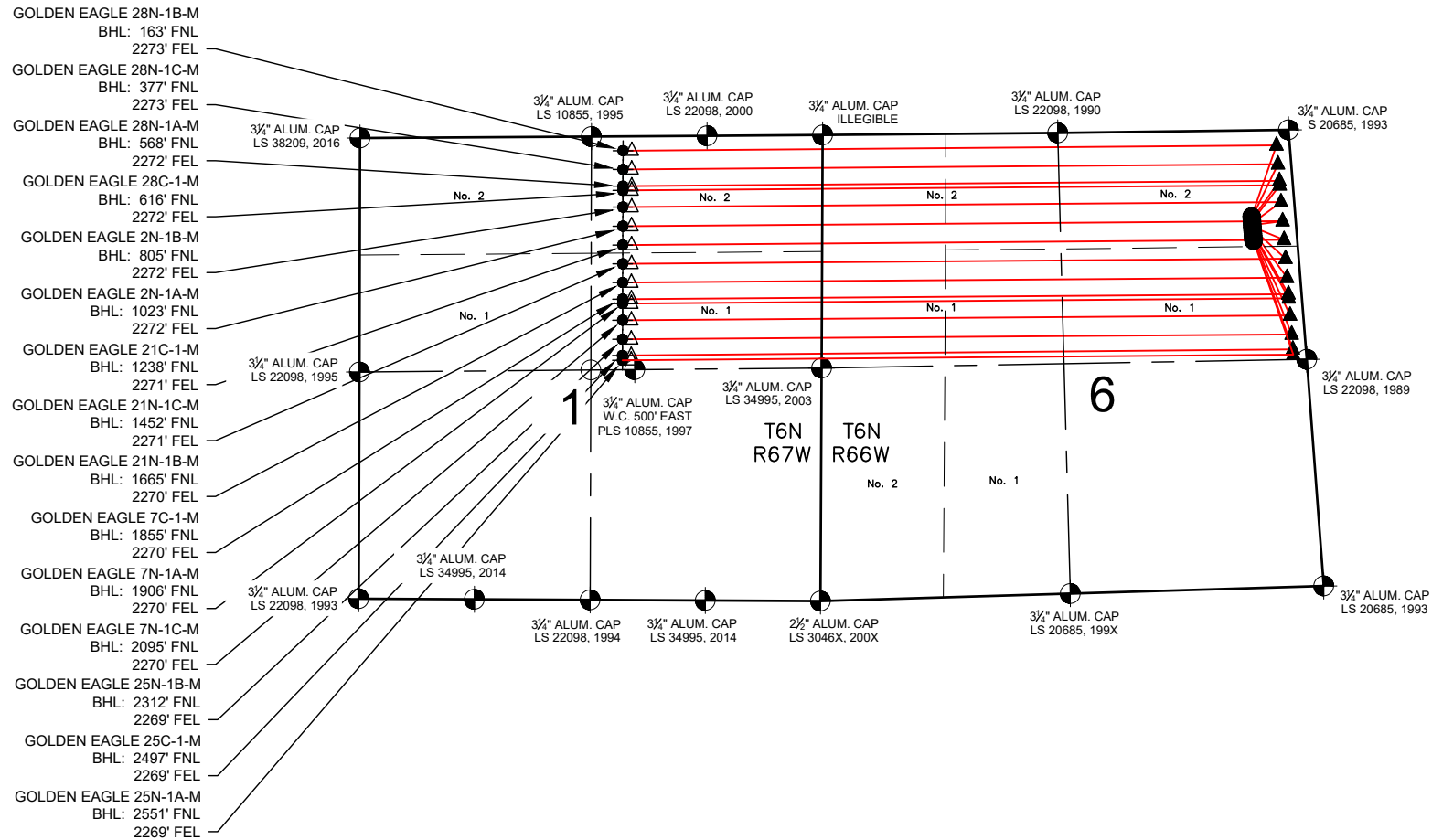


GOLDEN EAGLE 1-6 PAD MULTI-WELL PLAN

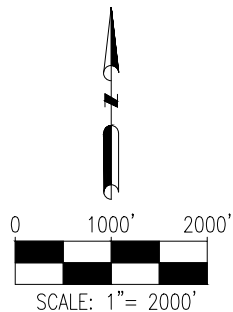


NOTES:

1. THIS FIELD SURVEY CONFORMS TO THE MINIMUM STANDARDS SET BY THE C.O.G.C.C., RULE NO. 215
2. ALL DISTANCES AND BEARINGS SHOWN HEREON ARE GROUND VALUES AS GPS MEASURED IN THE FIELD, WITH TIES TO WELLS MEASURED PERPENDICULAR TO SECTION LINES. THIS LOW DISTORTION PROJECTION (LDP) IS BASED ON THE NORTH AMERICAN DATUM OF 1983, U.S. SURVEY FOOT WITH A LATITUDE ORIGIN OF 40.481168°, A CENTRAL MERIDIAN LONGITUDE OF -104.773359°, AND A SCALE FACTOR ON THE CENTRAL MERIDIAN OF 1.000221 (EXACT). THE LDP BASIS OF BEARINGS IS GEODETIC NORTH.
3. FIELD VERIFICATION OF MONUMENTS COMPLETED WITHIN 1 YEAR OF SIGNATURE DATE.

LEGEND

- = EXISTING MONUMENT
- = CALCULATED POSITION
- = PROPOSED WELL
- ◆ = EXISTING WELL
- ⬮ = BOTTOM HOLE
- △ = BOTTOM OF PRODUCTION ZONE
- ▲ = TOP OF PRODUCTION ZONE
- TPZ = TOP OF PRODUCTION ZONE
- BHL = BOTTOM HOLE LOCATION
- BPZ = BOTTOM OF PRODUCTION ZONE



SHEET 1 OF 4



FIELD DATE:
04-24-18

DRAWING DATE:
11-28-18

BY:
CSG

CHECKED BY:
KAD

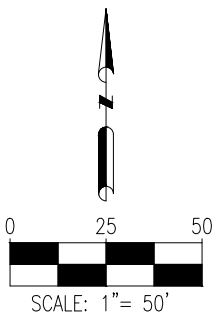
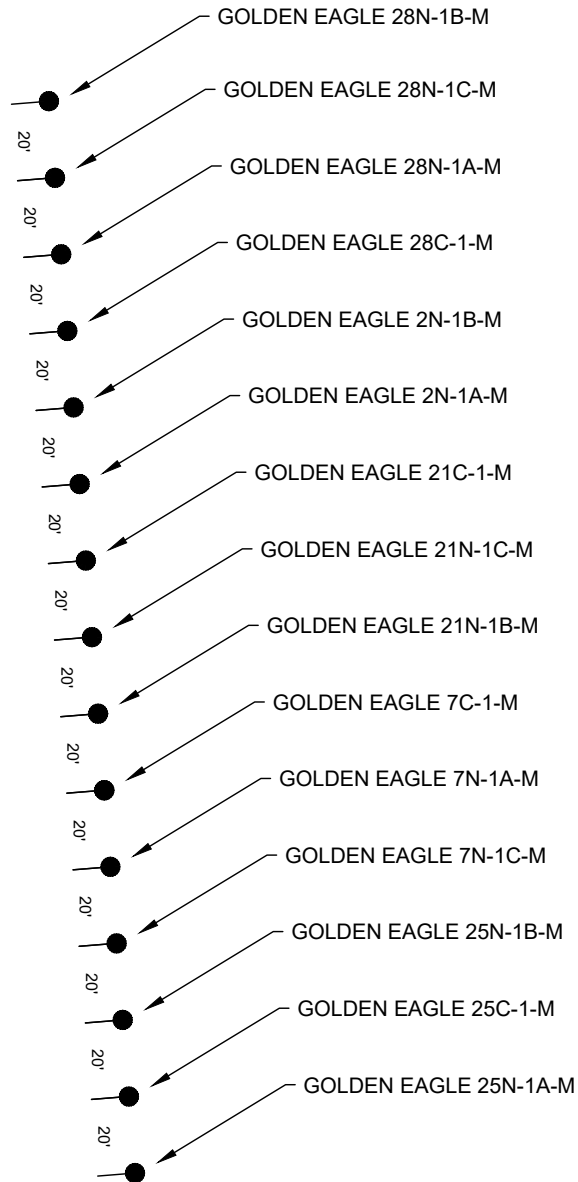
WELL NAME:
GOLDEN EAGLE 1-6 PAD

SURFACE LOCATION:
LOT 2 NE 1/4 SEC. 6, T6N, R66W, 6TH P.M.
WELD COUNTY, COLORADO

PREPARED FOR:



GOLDEN EAGLE 1-6 PAD MULTI-WELL PLAN



LEGEND

● = PROPOSED WELL

SHEET 2 OF 4

GOLDEN EAGLE 1-6 PAD MULTI-WELL PLAN

GOLDEN EAGLE 28N-1B-M

SURFACE HOLE	TOP OF PRODUCTION ZONE	BOTTOM OF PRODUCTION ZONE	BOTTOM HOLE	FORMATION
979' FNL & 498' FEL	174' FNL & 150' FEL	163' FNL & 2173' FEL	163' FNL & 2273' FEL	NIOBRARA
LAT: 40.520940°	LAT: 40.522573°	LAT: 40.522983°	LAT: 40.522980°	
LONG: -104.814644°	LONG: -104.813623°	LONG: -104.840033°	LONG: -104.840393°	

GOLDEN EAGLE 28N-1C-M

SURFACE HOLE	TOP OF PRODUCTION ZONE	BOTTOM OF PRODUCTION ZONE	BOTTOM HOLE	FORMATION
999' FNL & 498' FEL	389' FNL & 150' FEL	377' FNL & 2173' FEL	377' FNL & 2273' FEL	NIOBRARA
LAT: 40.520885°	LAT: 40.522573°	LAT: 40.522397°	LAT: 40.522395°	
LONG: -104.814638°	LONG: -104.813561°	LONG: -104.840035°	LONG: -104.840394°	

GOLDEN EAGLE 28N-1A-M

SURFACE HOLE	TOP OF PRODUCTION ZONE	BOTTOM OF PRODUCTION ZONE	BOTTOM HOLE	FORMATION
1019' FNL & 498' FEL	579' FNL & 150' FEL	568' FNL & 2172' FEL	568' FNL & 2272' FEL	NIOBRARA
LAT: 40.520831°	LAT: 40.522050°	LAT: 40.521873°	LAT: 40.521871°	
LONG: -104.814632°	LONG: -104.813506°	LONG: -104.840036°	LONG: -104.840396°	

GOLDEN EAGLE 28C-1-M

SURFACE HOLE	TOP OF PRODUCTION ZONE	BOTTOM OF PRODUCTION ZONE	BOTTOM HOLE	FORMATION
1039' FNL & 498' FEL	630' FNL & 150' FEL	616' FNL & 2172' FEL	616' FNL & 2272' FEL	CODELL
LAT: 40.520776°	LAT: 40.521911°	LAT: 40.521741°	LAT: 40.521739°	
LONG: -104.814626°	LONG: -104.813492°	LONG: -104.840037°	LONG: -104.840396°	

GOLDEN EAGLE 2N-1B-M

SURFACE HOLE	TOP OF PRODUCTION ZONE	BOTTOM OF PRODUCTION ZONE	BOTTOM HOLE	FORMATION
1059' FNL & 498' FEL	821' FNL & 150' FEL	805' FNL & 2172' FEL	805' FNL & 2272' FEL	NIOBRARA
LAT: 40.520721°	LAT: 40.521388°	LAT: 40.521221°	LAT: 40.521219°	
LONG: -104.814621°	LONG: -104.813436°	LONG: -104.840038°	LONG: -104.840398°	

GOLDEN EAGLE 2N-1A-M

SURFACE HOLE	TOP OF PRODUCTION ZONE	BOTTOM OF PRODUCTION ZONE	BOTTOM HOLE	FORMATION
1079' FNL & 498' FEL	1039' FNL & 150' FEL	1023' FNL & 2172' FEL	1023' FNL & 2272' FEL	NIOBRARA
LAT: 40.520666°	LAT: 40.520791°	LAT: 40.520623°	LAT: 40.520620°	
LONG: -104.814615°	LONG: -104.813373°	LONG: -104.840039°	LONG: -104.840399°	

GOLDEN EAGLE 21C-1-M

SURFACE HOLE	TOP OF PRODUCTION ZONE	BOTTOM OF PRODUCTION ZONE	BOTTOM HOLE	FORMATION
1099' FNL & 498' FEL	1251' FNL & 150' FEL	1238' FNL & 2171' FEL	1238' FNL & 2271' FEL	CODELL
LAT: 40.520612°	LAT: 40.520209°	LAT: 40.520033°	LAT: 40.520030°	
LONG: -104.814609°	LONG: -104.813312°	LONG: -104.840041°	LONG: -104.840401°	

GOLDEN EAGLE 21N-1C-M

SURFACE HOLE	TOP OF PRODUCTION ZONE	BOTTOM OF PRODUCTION ZONE	BOTTOM HOLE	FORMATION
1119' FNL & 498' FEL	1467' FNL & 150' FEL	1452' FNL & 2171' FEL	1452' FNL & 2271' FEL	NIOBRARA
LAT: 40.520557°	LAT: 40.519616°	LAT: 40.519447°	LAT: 40.519444°	
LONG: -104.814603°	LONG: -104.813249°	LONG: -104.840043°	LONG: -104.840402°	

GOLDEN EAGLE 21N-1B-M

SURFACE HOLE	TOP OF PRODUCTION ZONE	BOTTOM OF PRODUCTION ZONE	BOTTOM HOLE	FORMATION
1139' FNL & 498' FEL	1683' FNL & 150' FEL	1665' FNL & 2170' FEL	1665' FNL & 2270' FEL	NIOBRARA
LAT: 40.520502°	LAT: 40.519024°	LAT: 40.518861°	LAT: 40.518859°	
LONG: -104.814597°	LONG: -104.813187°	LONG: -104.840044°	LONG: -104.840404°	

GOLDEN EAGLE 7C-1-M

SURFACE HOLE	TOP OF PRODUCTION ZONE	BOTTOM OF PRODUCTION ZONE	BOTTOM HOLE	FORMATION
1159' FNL & 498' FEL	1872' FNL & 150' FEL	1855' FNL & 2170' FEL	1855' FNL & 2270' FEL	CODELL
LAT: 40.520448°	LAT: 40.518506°	LAT: 40.518341°	LAT: 40.518339°	
LONG: -104.814592°	LONG: -104.813132°	LONG: -104.840045°	LONG: -104.840405°	

GOLDEN EAGLE 7N-1A-M

SURFACE HOLE	TOP OF PRODUCTION ZONE	BOTTOM OF PRODUCTION ZONE	BOTTOM HOLE	FORMATION
1179' FNL & 498' FEL	1919' FNL & 150' FEL	1906' FNL & 2170' FEL	1906' FNL & 2270' FEL	NIOBRARA
LAT: 40.520393°	LAT: 40.518377°	LAT: 40.518201°	LAT: 40.518198°	
LONG: -104.814586°	LONG: -104.813119°	LONG: -104.840046°	LONG: -104.840405°	

GOLDEN EAGLE 7N-1C-M

SURFACE HOLE	TOP OF PRODUCTION ZONE	BOTTOM OF PRODUCTION ZONE	BOTTOM HOLE	FORMATION
1199' FNL & 498' FEL	2113' FNL & 150' FEL	2095' FNL & 2170' FEL	2095' FNL & 2270' FEL	NIOBRARA
LAT: 40.520338°	LAT: 40.517844°	LAT: 40.517681°	LAT: 40.517679°	
LONG: -104.814580°	LONG: -104.813063°	LONG: -104.840047°	LONG: -104.840407°	

SHEET 3 OF 4



FIELD DATE: 04-24-18	WELL NAME: GOLDEN EAGLE 1-6 PAD
DRAWING DATE: 11-28-18	SURFACE LOCATION: LOT 2 NE 1/4 SEC. 6, T6N, R66W, 6TH P.M. WELD COUNTY, COLORADO
BY: CSG	CHECKED BY: KAD



GOLDEN EAGLE 1-6 PAD MULTI-WELL PLAN

GOLDEN EAGLE 25N-1B-M

SURFACE HOLE	TOP OF PRODUCTION ZONE	BOTTOM OF PRODUCTION ZONE	BOTTOM HOLE	FORMATION
1219' FNL & 498' FEL	2331' FNL & 150' FEL	2312' FNL & 2169' FEL	2312' FNL & 2269' FEL	NIOBRARA
LAT: 40.520283°	LAT: 40.517247°	LAT: 40.517087°	LAT: 40.517084°	
LONG: -104.814574°	LONG: -104.813000°	LONG: -104.840049°	LONG: -104.840408°	



GOLDEN EAGLE 25C-1-M

SURFACE HOLE	TOP OF PRODUCTION ZONE	BOTTOM OF PRODUCTION ZONE	BOTTOM HOLE	FORMATION
1239' FNL & 498' FEL	2501' FNL & 150' FEL	2497' FNL & 2169' FEL	2497' FNL & 2269' FEL	CODELL
LAT: 40.520229°	LAT: 40.516781°	LAT: 40.516579°	LAT: 40.516576°	
LONG: -104.814568°	LONG: -104.812951°	LONG: -104.840050°	LONG: -104.840410°	

GOLDEN EAGLE 25N-1A-M

SURFACE HOLE	TOP OF PRODUCTION ZONE	BOTTOM OF PRODUCTION ZONE	BOTTOM HOLE	FORMATION
1259' FNL & 498' FEL	2562' FNL & 150' FEL	2551' FNL & 2169' FEL	2551' FNL & 2269' FEL	NIOBRARA
LAT: 40.520174°	LAT: 40.516615°	LAT: 40.516430°	LAT: 40.516428°	
LONG: -104.814563°	LONG: -104.812933°	LONG: -104.840050°	LONG: -104.840410°	

SHEET 4 OF 4

 <p>7535 Hilltop Circle Denver, CO 80221 (303) 928-7128 www.ascentgeomatics.com</p>	FIELD DATE: 04-24-18	WELL NAME: GOLDEN EAGLE 1-6 PAD		 <p>SRC ENERGY</p>
	DRAWING DATE: 11-28-18	SURFACE LOCATION: LOT 2 NE 1/4 SEC. 6, T6N, R66W, 6TH P.M. WELD COUNTY, COLORADO		
	BY: CSG	CHECKED BY: KAD		