

TICKET	BCO-1901-0140
DATE	1/23/2019
CREW INFORMATION	
SUPERVISOR	Cody Michel
PUMP UNIT	740018
NUMBERS	
ARRIVAL (D&T)	1/23/19 12:30 PM
DEPARTURE (D&T)	1/23/19 5:15 PM

[illegible][illegible]

Customer Name Printed \_\_\_\_\_

Customer Signature \_\_\_\_\_

Date Signed \_\_\_\_\_

# Job Summary

Ticket Number

TN#

BCO-1901-0140

Ticket Date

1/23/2019

COUNTY	COMPANY	API Number
<b>Weld</b>	<b>PDC ENERGY</b>	<b>05-123-20724</b>
WELL NAME	RIG	JOB TYPE
<b>State Peterson 21-16</b>	<b>Brigade 7</b>	<b>Plug to Abandon</b>
SURFACE WELL LOCATION	CJES Field Supervisor	CUSTOMER REP
<b>40.405206 -104.443991</b>	<b>Cody Michel</b>	<b>Ryan Beam</b>
EMPLOYEES		
<i>Jimmy Payne</i>		
<i>Rich Devine</i>		
<i>Brett Moll</i>		

## WELL PROFILE

Max Treating Pressure (psi):	1000	Bottom Hole Static Temperature (°F):	
Bottom Hole Circulating Temperature (°F):		Well Type:	

## Open Hole

1	Size (in)	TMD From (ft)	TMD to (ft)	TVD From (Ft)	TVD to (Ft)
	14	285	618	285	618
2	Size (in)	TMD From (ft)	TMD to (ft)	TVD From (Ft)	TVD to (Ft)
	10	618	1700	1700	1700

## Casing/Tubing/Drill Pipe

Type	Size (in)	Weight (lb/ft)	Grade	TMD From (ft)	TMD to (ft)	TVD From (Ft)	TVD to (Ft)
Surface	8.625	24		0	285	0	285
Type	Size (in)	Weight (lb/ft)	Grade	TMD From (ft)	TMD to (ft)	TVD From (Ft)	TVD to (Ft)
Prudcuton Casing	4.5	10.5		1700	1819	0	1819
Type	Size (in)	Weight (lb/ft)	Grade	TMD From (ft)	TMD to (ft)	TVD From (Ft)	TVD to (Ft)
Tubing	2.375	4.7		0	1819	0	1819

## CEMENT DATA

<b>Stage 1:</b>	From Depth (ft):	1188	To Depth (ft):	1819
Type: <b>Balance Plug</b>	Volume (sacks):	132	Volume (bbls):	31.3
Cement & Additives:				
Neat Type III		Density (ppg):	Yield (ft³/sk):	Water Req.
		14.8	1.33	6.32
<b>Stage 2:</b>	From Depth (ft):	0	To Depth (ft):	618
Type: <b>Surface Plug</b>	Volume (sacks):	193	Volume (bbls):	45.7
Cement & Additives:				
Neat Type III		Density (ppg):	Yield (ft³/sk):	Water Req.
		14.8	1.33	6.32
<b>Stage 3:</b>	From Depth (ft):		To Depth (ft):	
Type: <b>Top Off</b>	Volume (sacks):		Volume (bbls):	
Cement & Additives:				
		Density (ppg):	Yield (ft³/sk):	Water Req.
<b>Stage 4:</b>	From Depth (ft):		To Depth (ft):	
Type:	Volume (sacks):		Volume (bbls):	
Cement & Additives:				
		Density (ppg):	Yield (ft³/sk):	Water Req.

## SUMMARY

Preflushes:	bbls of		Calculated Displacement (bbl):	Stage 1	Stage 2
	bbls of		Actual Displacement (bbl):	5.3	
	bbls of			4.6	
Total Preflush/Spacer Volume (bbl):			Plug Bump (Y/N):		Bump Pressure (psi):
Total Slurry Volume (bbl):			Lost Returns (Y/N):	No	(if Y, when)
Total Fluid Pumped					
Returns to Surface:					

Job Notes (fluids pumped / procedures / tools / etc.):

Balance plug: Pumped 132 sks (31.3 bbl) of Type III @ 14.8 ppg, 1.33 cf/sk with estimated coverage between 1188-1819 ft. 4.5" production casing cut at 1700 ft 4.6 bbl displacement. Surface plug pumped 193 sks (45.7 bbl) of Type III 14.8 ppg cement to surface. No top off needed pumped per customer request

Customer Representative Signature:

Thank You For Using  
CJES O-TEX Cementing

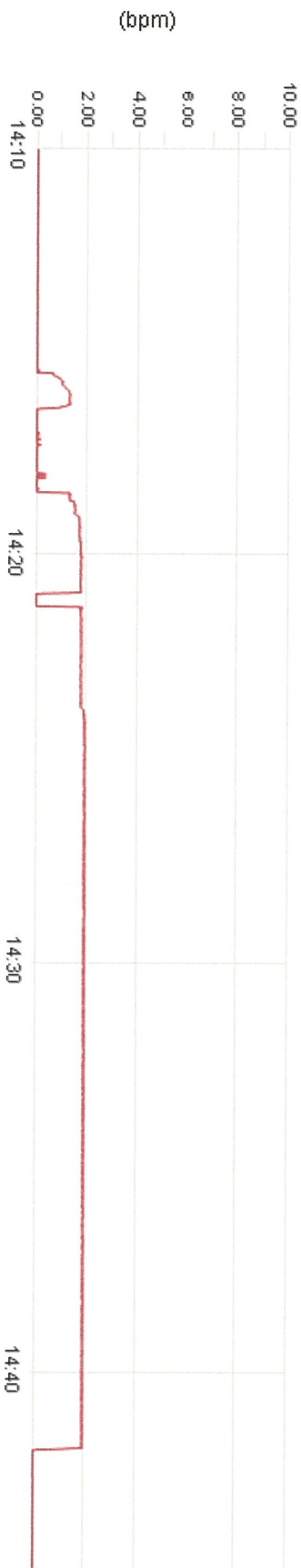


### Cement Job Log

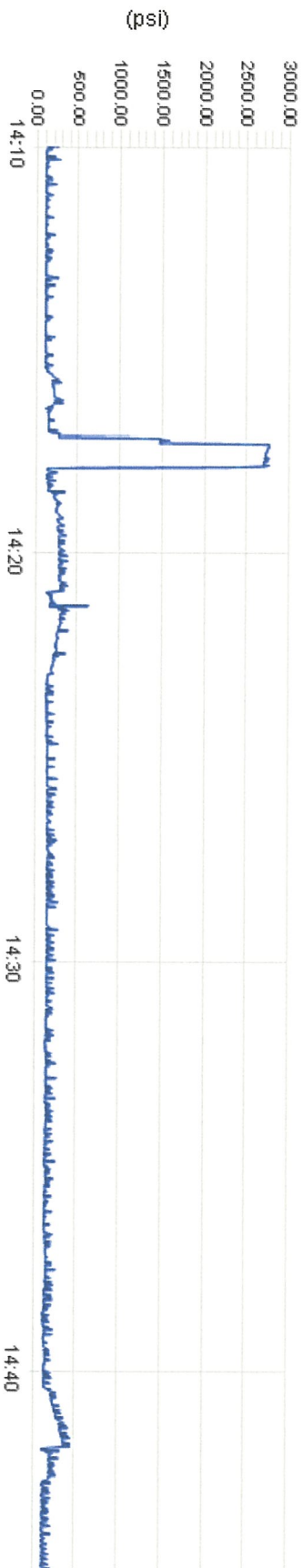
[illegible]

<b>Client</b>	PDC Energy	<b>Client Rep</b>	Ryan Beam	<b>Supervisor</b>	Cody Michel
<b>Ticket No.</b>	BCO-1901-0140	<b>Well Name</b>	State Peterson 21-16	<b>Unit No.</b>	740018
<b>Location</b>	NENW 16 5N63W	<b>Job Type</b>	Abandonment Plugs	<b>Service District</b>	Brighton
<b>Comments</b>	See job log			<b>Job Date</b>	01/23/2019

Unit 740018 Rate Total



Unit 740018 Pump Pressure

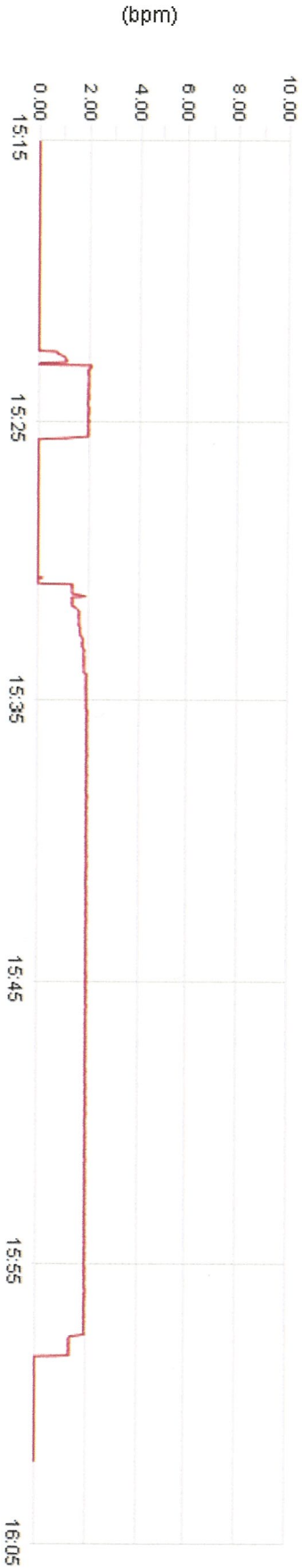


Unit 740018 Density

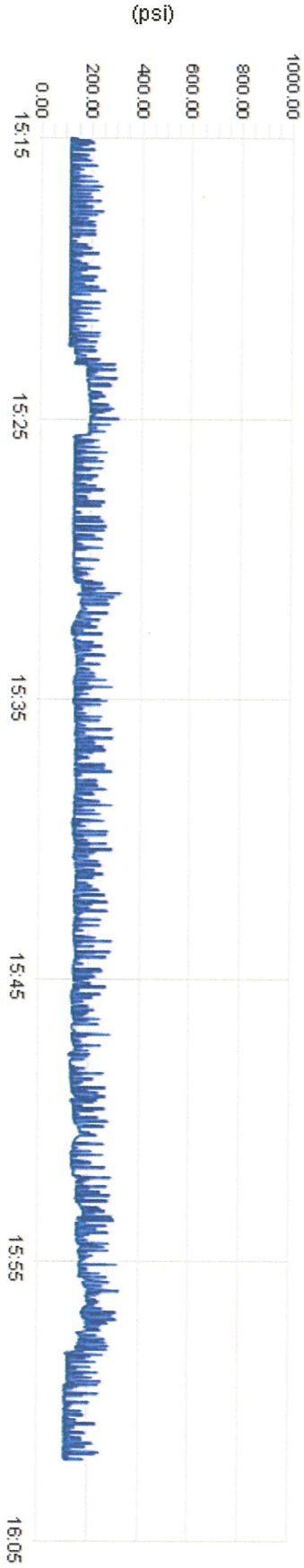


<b>Client</b>	PDC Energy	<b>Client Rep</b>	Ryan Beam	<b>Supervisor</b>	Cody Michel
<b>Ticket No.</b>	BCO-1901-0140	<b>Well Name</b>	State Peterson 21-16	<b>Unit No.</b>	740018
<b>Location</b>	NENW 16 5N63W	<b>Job Type</b>	Abandonment Plugs	<b>Service District</b>	Brighton CO
<b>Comments</b>	See job log			<b>Job Date</b>	01/23/2019

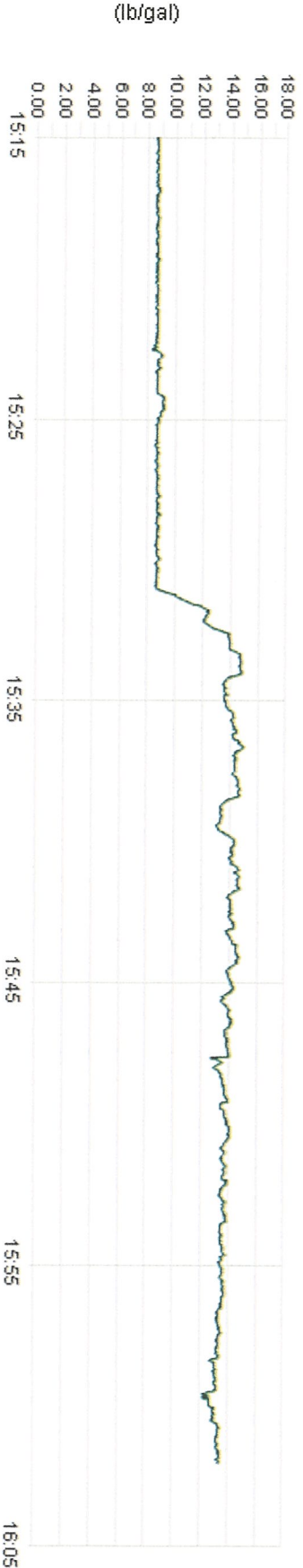
Unit 740018 Rate Total



Unit 740018 Pump Pressure



Unit 740018 Density





# RANGER ENERGY SERVICES, LLC

## WIRELINE DIVISION

3333 Center Dr  
Milliken, Co



Service Date:

<b>Company Name:</b> PDC		<b>Company Address:</b>		<b>Field Ticket Number:</b> 30001955
<b>Well Name:</b> STATE PETERSON 21-16	<b>Field:</b> WATTENBERG	<b>County:</b> WELD	<b>State:</b> COLORADO	<b>Rig Name &amp; Number:</b> Brigade Rig #7
<b>SERVICE NOTES:</b> JCGR to 6720' / Set STS CIBP @ 6683' with 2 sx cement / Set STS CIBP @ 6410' with 2 sx cement/ CBL 2000' to surface/ Jet cut 4.5" @ 1700'			<b>Date:</b> 1/22/2019	<b>Wireline Unit #</b> 222 <b>Engineer:</b> J. JOHNSON <b>Operator:</b> T. VAN NEST <b>Operator:</b> A. REAGAN

RUN	CODE	DESCRIPTIONS	QTY	UNIT PRICE	DISCOUNT	AMOUNT
1	1000-001	Set Up Charge Cased Hole Unit	1			
	3000-001	Packoff Operation Charge0#-1000#	1			
2	8000-009	Junk Catcher / Gauge Ring Depth Charge	7070			
	8000-010	Junk Catcher / Gauge Ring Operation Charge	1			
3	8000-001	Bridge Plug Depth Charge	6683			
	8000-015	Setting Tool Rental, per tool	1			
	8000-002	Bridge Plug Operation Charge	1			
	8000-014	Standard Set Power Charge	1			
4	7000-006	Dump Bailer Depth Charge	6683			
	7000-007	Dump Bailer Operation Charge	1			
5	8000-001	Bridge Plug Depth Charge	6410			
	8000-015	Setting Tool Rental, per tool	1			
	8000-002	Bridge Plug Operation Charge	1			
	8000-014	Standard Set Power Charge	1			
6	7000-006	Dump Bailer Depth Charge	6410			
	7000-007	Dump Bailer Operation Charge	1			
7	4000-017	Cement Bond Log Depth Charge	2000			
	4000-018	Cement Bond Log Operation Charge	2000			
	4000-009	Simultaneous Gamma Ray Log Depth Charge	2000			
	4000-010	Simultaneous Gamma Ray Log Operation Charge	2000			
	4000-013	Simultaneous CCL Log Depth Charge	2000			
	4000-014	Simultaneous CCL Log Operation Charge	2000			
8	5000-011	Jet Cutter Depth Charge	1700			
	5000-014	Jet Cutter Operation Charge for Casing	1			

<b>Customer Signature:</b>	<b>Customer Name Printed:</b> Ryan Beam	<b>Ranger Energy Services Representative Signature:</b>
----------------------------	--	---

The above estimated charges and data shown are subject to change by Ranger Energy Services, LLC. Payment terms are net 30 Days.