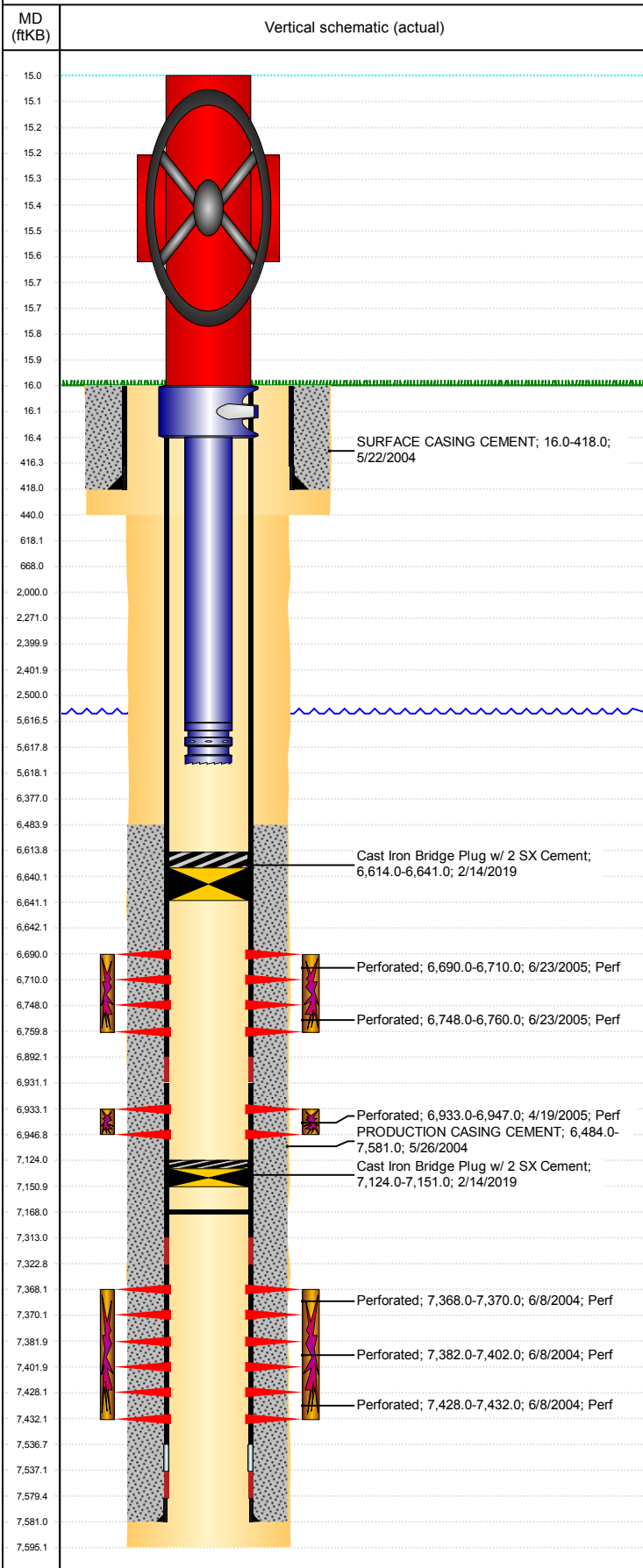


**Well Name: BLAKE B29-23**

VERTICAL, ORIGINAL HOLE, 2/20/2019 3:45:31 PM



Well Header									
API 05-123-22190		Business Unit DJ BASIN			District 15		Well Config VERTICAL		
KB - GL / MSL (ft... 16.00		Spud Date 5/21/2004		P & A Date		Well Production Status TA			SoRT Yes
Comment 6/7/06- TIGHT @ 6800'. STATE SHOWS SHUT IN SINCE AUG 2017.									
Surface Location (Congressional)									
Qtr 3 NW	Qtr 4 SE	Section 29	Twnshp 5	Twnsh... N	Range 64	Rng E... W	Actual Latitude (°) 40.36734959	Actual Longitude (°) -104.57099401	
Wellbore Sections									
Section Des			Size (in)			Act Top, MD (ftKB)		Act Btm, MD (ftKB)	
SURFACE			12 1/4			16		440	
PRODUCTION			7 7/8			440		7,595	
Casing Strings									
Csg Des			Run Date		OD (in)	Wt/Len (lb/ft)	Grade	Top, MD (ftKB)	MD (ftKB)
Surface			5/21/2004		8 5/8	24.00	?	16.0	418.0
Production			5/26/2004		4 1/2	11.60	M-80	16.0	7,581.0
Cement									
Des					Start Date		Top (ftKB)		Btm (ftKB)
SURFACE CASING CEMENT					5/22/2004		16.0		418.0
PRODUCTION CASING CEMENT					5/26/2004		6,484.0		7,581.0
Zone Statuses									
Zone Name		Status Date	Status	Fluid Type	Job			Prod Method	
NIOBRARA		5/9/2017	SI	Water	PLUG AND ABANDON, 2/13/2019 12:00			Flowing	
NIOBRARA		2/14/2019	TA						
CODELL		2/3/2010	PR						
CODELL		2/14/2019	TA						
J SAND		5/9/2017	SI						
J SAND		2/14/2019	TA	PLUG AND ABANDON, 2/13/2019 12:00					
Perforation Data									
Linked Zone			Bnch/Stg	Entered Shot Total	Top (ftKB)		Btm (ftKB)		Date
NIOBRARA, ORIGINAL HOLE				120	6,690.00		6,710.00		6/23/2005
NIOBRARA, ORIGINAL HOLE				72	6,748.00		6,760.00		6/23/2005
CODELL, ORIGINAL HOLE				56	6,933.00		6,947.00		4/19/2005
J SAND, ORIGINAL HOLE				8	7,368.00		7,370.00		6/8/2004
J SAND, ORIGINAL HOLE				80	7,382.00		7,402.00		6/8/2004
J SAND, ORIGINAL HOLE				16	7,428.00		7,432.00		6/8/2004
Stimulation Intervals									
Zone				Start Date		Top (ftKB)		Btm (ftKB)	
NIOBRARA, ORIGINAL HOLE				7/15/2005		6,690.0		6,760.0	
CODELL, ORIGINAL HOLE				4/28/2005		6,933.0		6,947.0	
J SAND, ORIGINAL HOLE				6/18/2004		7,368.0		7,432.0	
Other In Hole									
Run Date		Des				OD (in)	Top (ftKB)		Btm (ftKB)
2/14/2019		Cast Iron Bridge Plug w/ 2 SX Cement				3.99	7,124.0		7,151.0
2/14/2019		Cast Iron Bridge Plug w/ 2 SX Cement				3.99	6,614.0		6,641.0
Logs									
Date		Type				Top, MD (ftKB)		Btm, MD (ftKB)	
5/25/2004		COMPENSATED DENSITY				4,050.0		7,573.0	
5/25/2004		INDUCTION				400.0		7,593.0	
6/8/2004		CEMENT BOND				6,240.0		7,531.0	
5/24/2016		GYRO				0.0		7,250.0	
Plug Back Total Depths									
Date		Type		Com				Depth (ftKB)	
6/9/2006		FILL		TAG FILL				7,528.0	
2/14/2019		FILL		TAGGED FILL WITH 3.62" GAUGE RING.				7,168.0	