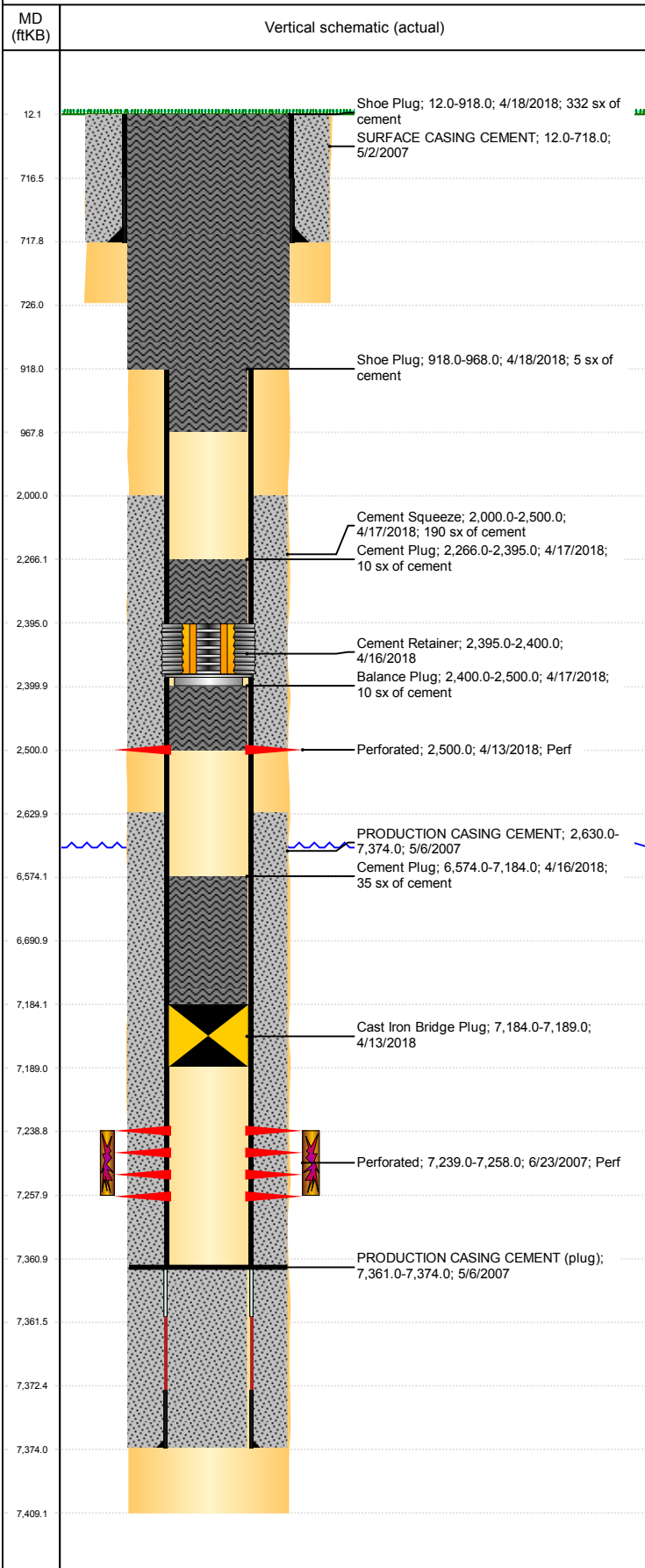


Well Name: BURBACH 15-22

VERTICAL, ORIGINAL HOLE, 2/6/2019 12:17:32 PM



Well Header					
API 05-123-24936		Business Unit DJ BASIN		District 15	Well Config VERTICAL
KB - GL / MSL (ft... 12.00	Spud Date 5/2/2007	P & A Date 4/18/2018		Well Production Status PA	SoRT Yes
Comment					

Surface Location (Congressional)

Qtr 3 NW	Qtr 4 NW	Section 15	Twonshp 6	Twonsh... N	Range 66	Rng E... W	Actual Latitude (") 40.49333000	Actual Longitude (") -104.76973000
-------------	-------------	---------------	--------------	----------------	-------------	---------------	------------------------------------	---------------------------------------

Wellbore Sections

Section Des	Size (in)	Act Top, MD (ftKB)	Act Btm, MD (ftKB)
SURFACE	12 1/4	12	726
PRODUCTION	7 7/8	726	7,409

Casing Strings

Csg Des	Run Date	OD (in)	Wt/Len (lb/ft)	Grade	Top, MD (ftKB)	MD (ftKB)
Surface	5/2/2007	8 5/8	24.00		12.0	718.0
Production	5/6/2007	4 1/2	11.60	M-80	12.0	7,374.0

Cement

Des	Start Date	Top (ftKB)	Btm (ftKB)
SURFACE CASING CEMENT	5/2/2007	12.0	718.0
PRODUCTION CASING CEMENT	5/6/2007	2,630.0	7,374.0
Cement Plug	4/16/2018	6,574.0	7,184.0
Cement Squeeze	4/17/2018	2,000.0	2,500.0
Balance Plug	4/17/2018	2,400.0	2,500.0
Cement Plug	4/17/2018	2,266.0	2,395.0
Shoe Plug	4/18/2018	918.0	968.0
Shoe Plug	4/18/2018	12.0	918.0

Zone Statuses

Zone Name	Status Date	Status	Fluid Type	Job	Prod Method
CODELL	6/4/2015	PR			
CODELL	4/13/2018	P&A		ABANDON WELL, 4/11/2018 12:00	

Perforation Data

Linked Zone	Bnch/Stg	Entered Shot Total	Top (ftKB)	Btm (ftKB)	Date
			2,500.00	2,500.00	4/13/2018
CODELL, ORIGINAL HOLE		76	7,239.00	7,258.00	6/23/2007

Stimulation Intervals

Zone	Start Date	Top (ftKB)	Btm (ftKB)
CODELL, ORIGINAL HOLE	6/26/2007	7,239.0	7,258.0

Other In Hole

Run Date	Des	OD (in)	Top (ftKB)	Btm (ftKB)
4/13/2018	Cast Iron Bridge Plug	3.99	7,184.0	7,189.0
4/16/2018	Cement Retainer	3.99	2,395.0	2,400.0

Logs

Date	Type	Top, MD (ftKB)	Btm, MD (ftKB)
3/15/2018	GYRO	12.0	4,200.0

Plug Back Total Depths

Date	Type	Com	Depth (ftKB)
6/19/2007	FILL	CBL DEPTH LOGGER	7,326.0
9/20/2007	FILL	MOST RECENT C/O	7,361.0