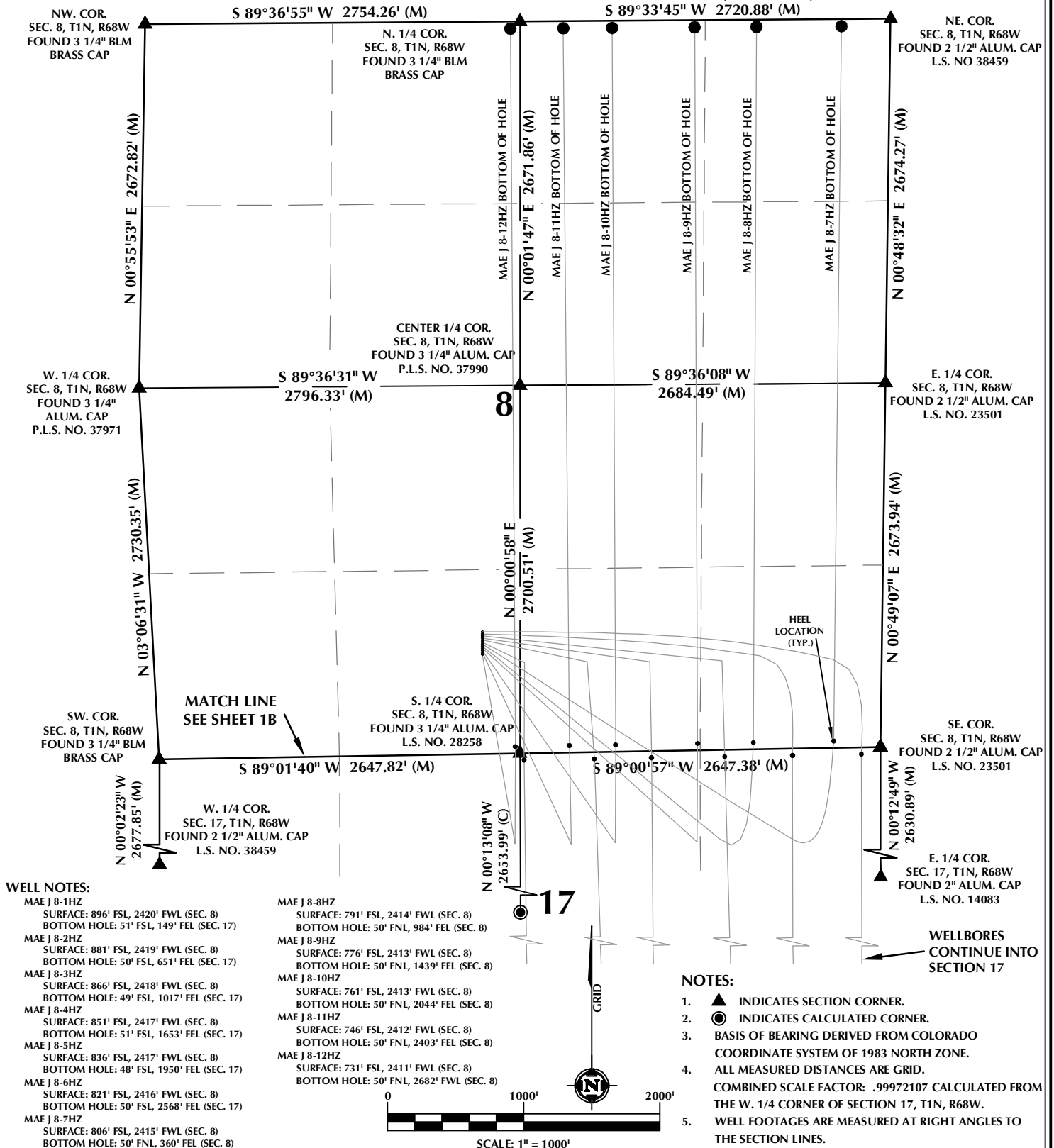


MULTI-WELL PLAN SECTIONS 8 & 17, T1N, R68W



WELL PAD - MAE J 14-8HZ

MULTI-WELL PLAN
MAE J 8-1HZ, MAE J 8-2HZ,
MAE J 8-3HZ, MAE J 8-4HZ, MAE J 8-5HZ,
MAE J 8-6HZ, MAE J 8-7HZ, MAE J 8-8HZ,
MAE J 8-9HZ, MAE J 8-10HZ,
MAE J 8-11HZ & MAE J 8-12HZ
LOCATED IN SECTIONS 8 & 17
T1N, R68W, 6TH P.M.
WELD COUNTY, COLORADO

**Kerr-McGee Oil &
Gas Onshore L.P.**
1099 18th Street
Denver, Colorado 80202



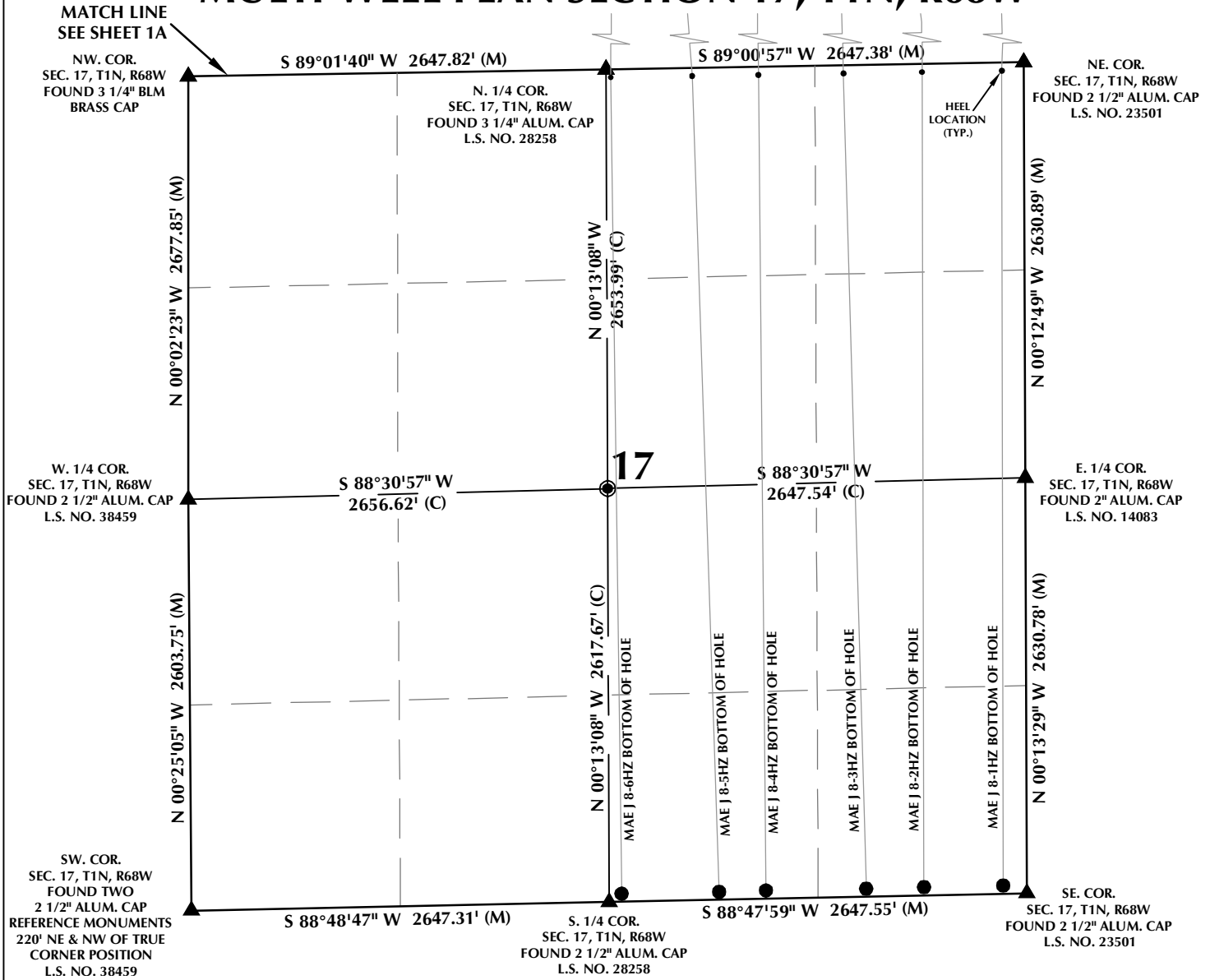
CONSULTING, LLC

SHERIDAN OFFICE
1095 Saberton Avenue
Sheridan, Wyoming 82801
Phone 307-674-0609

LOVELAND OFFICE
6706 North Franklin Avenue
Loveland, Colorado 80538
Phone 970-776-4331

| | | | | |
|---------------|----------|----------------|----------|-----------|
| DRAFTED BY: | LMO | CHECKED BY: | RKF | SHEET NO: |
| DATE DRAFTED: | 11/20/18 | DATE SURVEYED: | 10/26/18 | 1A |
| REVISED: | | FILE NAME: | 16-04 | 1A OF 1 |

MULTI-WELL PLAN SECTION 17, T1N, R68W



WELL NOTES:

MAE J 8-1HZ
SURFACE: 896' FSL, 2420' FWL (SEC. 8)
BOTTOM HOLE: 51' FSL, 149' FEL (SEC. 17)

MAE J 8-2HZ
SURFACE: 881' FSL, 2419' FWL (SEC. 8)
BOTTOM HOLE: 50' FSL, 651' FEL (SEC. 17)

MAE J 8-3HZ
SURFACE: 866' FSL, 2418' FWL (SEC. 8)
BOTTOM HOLE: 49' FSL, 1017' FEL (SEC. 17)

MAE J 8-4HZ
SURFACE: 851' FSL, 2417' FWL (SEC. 8)
BOTTOM HOLE: 51' FSL, 1653' FEL (SEC. 17)

MAE J 8-5HZ
SURFACE: 836' FSL, 2417' FWL (SEC. 8)
BOTTOM HOLE: 48' FSL, 1950' FEL (SEC. 17)

MAE J 8-6HZ
SURFACE: 821' FSL, 2416' FWL (SEC. 8)
BOTTOM HOLE: 50' FSL, 2568' FEL (SEC. 17)

MAE J 8-7HZ
SURFACE: 806' FSL, 2415' FWL (SEC. 8)
BOTTOM HOLE: 50' FSL, 360' FEL (SEC. 8)

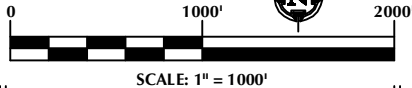
MAE J 8-8HZ
SURFACE: 791' FSL, 2414' FWL (SEC. 8)
BOTTOM HOLE: 50' FSL, 984' FEL (SEC. 8)

MAE J 8-9HZ
SURFACE: 776' FSL, 2413' FWL (SEC. 8)
BOTTOM HOLE: 50' FSL, 1439' FEL (SEC. 8)

MAE J 8-10HZ
SURFACE: 761' FSL, 2413' FWL (SEC. 8)
BOTTOM HOLE: 50' FSL, 2044' FEL (SEC. 8)

MAE J 8-11HZ
SURFACE: 746' FSL, 2412' FWL (SEC. 8)
BOTTOM HOLE: 50' FSL, 2403' FEL (SEC. 8)

MAE J 8-12HZ
SURFACE: 731' FSL, 2411' FWL (SEC. 8)
BOTTOM HOLE: 50' FSL, 2682' FWL (SEC. 8)



NOTES:

- ▲ INDICATES SECTION CORNER.
 - INDICATES CALCULATED CORNER.
 - BASIS OF BEARING DERIVED FROM COLORADO COORDINATE SYSTEM OF 1983 NORTH ZONE.
 - ALL MEASURED DISTANCES ARE GRID.
- COMBINED SCALE FACTOR: .99972107 CALCULATED FROM THE W. 1/4 CORNER OF SECTION 17, T1N, R68W.
- WELL FOOTAGES ARE MEASURED AT RIGHT ANGLES TO THE SECTION LINES.

WELL PAD - MAE J 14-8HZ

MULTI-WELL PLAN
MAE J 8-1HZ, MAE J 8-2HZ,
MAE J 8-3HZ, MAE J 8-4HZ, MAE J 8-5HZ,
MAE J 8-6HZ, MAE J 8-7HZ, MAE J 8-8HZ,
MAE J 8-9HZ, MAE J 8-10HZ,
MAE J 8-11HZ & MAE J 8-12HZ
LOCATED IN SECTIONS 8 & 17
T1N, R68W, 6TH P.M.
WELD COUNTY, COLORADO

**Kerr-McGee Oil &
Gas Onshore L.P.**
1099 18th Street
Denver, Colorado 80202



CONSULTING, LLC

SHERIDAN OFFICE
1095 Saberton Avenue
Sheridan, Wyoming 82801
Phone 307-674-0609

LOVELAND OFFICE
6706 North Franklin Avenue
Loveland, Colorado 80538
Phone 970-776-4331

| | | | | |
|---------------|----------|----------------|----------|-----------|
| DRAFTED BY: | LMO | CHECKED BY: | RKF | SHEET NO: |
| DATE DRAFTED: | 11/20/18 | DATE SURVEYED: | 10/26/18 | 1B |
| REVISED: | | FILE NAME: | 16-04 | 1B OF 1 |