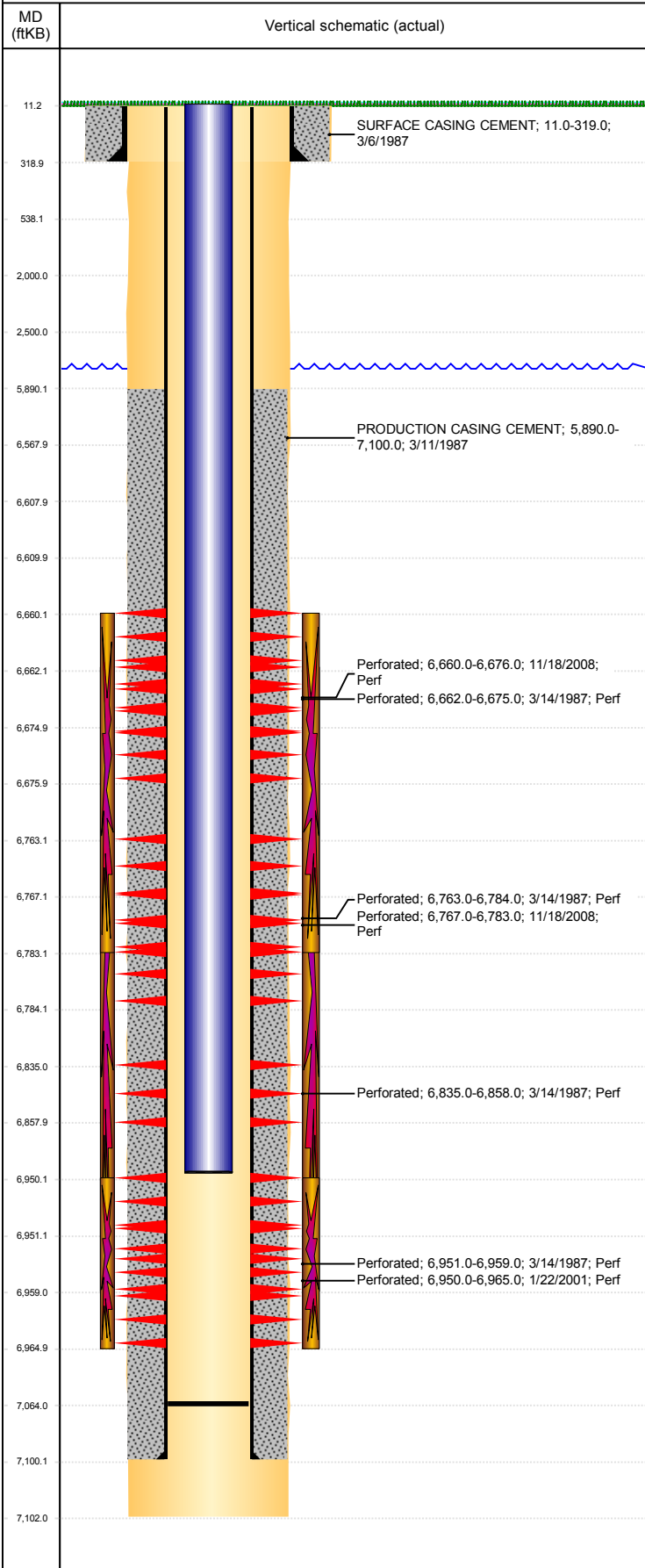


**Well Name: OCOMA B29-12**

VERTICAL, ORIGINAL HOLE, 2/20/2019 11:48:48 AM



Well Header									
API 05-123-13392		Business Unit DJ BASIN		District 15		Well Config VERTICAL			
KB - GL / MSL (ft... 11.00		Spud Date 3/6/1987		P & A Date		Well Production Status SI		SoRT No	
Comment HIGH PRESSURE LEAK BETWEEN 5853' & 5890' CASING HELD @ 1000#. TD DSICREPANCY: STATE- 7095', LOGGER DEPTH- 7102'.									
Surface Location (Congressional)									
Qtr 3 NW	Qtr 4 SW	Section 29	Twonshp 5	Twonsh... N	Range 64	Rng E... W	Actual Latitude (°) 40.36823562	Actual Longitude (°) -104.58075911	
Wellbore Sections									
Section Des		Size (in)		Act Top, MD (ftKB)		Act Btm, MD (ftKB)			
SURFACE		12 1/4		11		319			
PRODUCTION		7 7/8		319		7,102			
Casing Strings									
Csg Des		Run Date		OD (in)	Wt/Len (lb/ft)	Grade	Top, MD (ftKB)	MD (ftKB)	
Surface		3/6/1987		8 5/8	24.00		11.0	319.0	
Production		3/11/1987		4 1/2	15.10		11.0	7,100.0	
Cement									
Des		Start Date		Top (ftKB)		Btm (ftKB)			
SURFACE CASING CEMENT		3/6/1987		11.0		319.0			
PRODUCTION CASING CEMENT		3/11/1987		5,890.0		7,100.0			
Zone Statuses									
Zone Name	Status Date	Status	Fluid Type	Job			Prod Method		
NIOBRARA	1/3/2009	PR	Water	RE-FRAC, 11/18/2008 11:00			Flowing		
NIOBRARA	2/1/2010	PR	Water	RE-FRAC, 11/18/2008 11:00			Flowing		
CODELL	1/3/2009	PR	Water	RE-FRAC, 11/18/2008 11:00			Flowing		
CODELL	2/1/2010	PR	Water	RE-FRAC, 11/18/2008 11:00			Flowing		
Perforation Data									
Linked Zone	Bnch/Stg	Entered Shot Total	Top (ftKB)	Btm (ftKB)	Date				
NIOBRARA, ORIGINAL HOLE	A	64	6,660.00	6,676.00	11/18/2008				
NIOBRARA, ORIGINAL HOLE	A	3	6,662.00	6,675.00	3/14/1987				
NIOBRARA, ORIGINAL HOLE	B	5	6,763.00	6,784.00	3/14/1987				
NIOBRARA, ORIGINAL HOLE	B	64	6,767.00	6,783.00	11/18/2008				
NIOBRARA, ORIGINAL HOLE	C	2	6,835.00	6,858.00	3/14/1987				
CODELL, ORIGINAL HOLE		60	6,950.00	6,965.00	1/22/2001				
CODELL, ORIGINAL HOLE		5	6,951.00	6,959.00	3/14/1987				
Stimulation Intervals									
Zone		Start Date		Top (ftKB)		Btm (ftKB)			
NIOBRARA, ORIGINAL HOLE		12/11/2008		6,660.0		6,783.0			
CODELL, ORIGINAL HOLE		3/16/1987		6,662.0		6,959.0			
CODELL, ORIGINAL HOLE		1/24/2001		6,950.0		6,965.0			
Other In Hole									
Run Date		Des		OD (in)	Top (ftKB)	Btm (ftKB)			
Logs									
Date	Type			Top, MD (ftKB)	Btm, MD (ftKB)				
3/10/1987	Compensated Density			3,550.0	7,060.0				
3/10/1987	Induction			319.0	7,100.0				
3/14/1987	Cement Bond			5,700.0	7,016.0				
6/29/2016	GYRO			0.0	6,900.0				
Plug Back Total Depths									
Date	Type	Com						Depth (ftKB)	
3/11/2008								7,082.0	
12/30/2008	FILL	STOPPED HERE TUBING PLUGGING UP.						7,064.0	