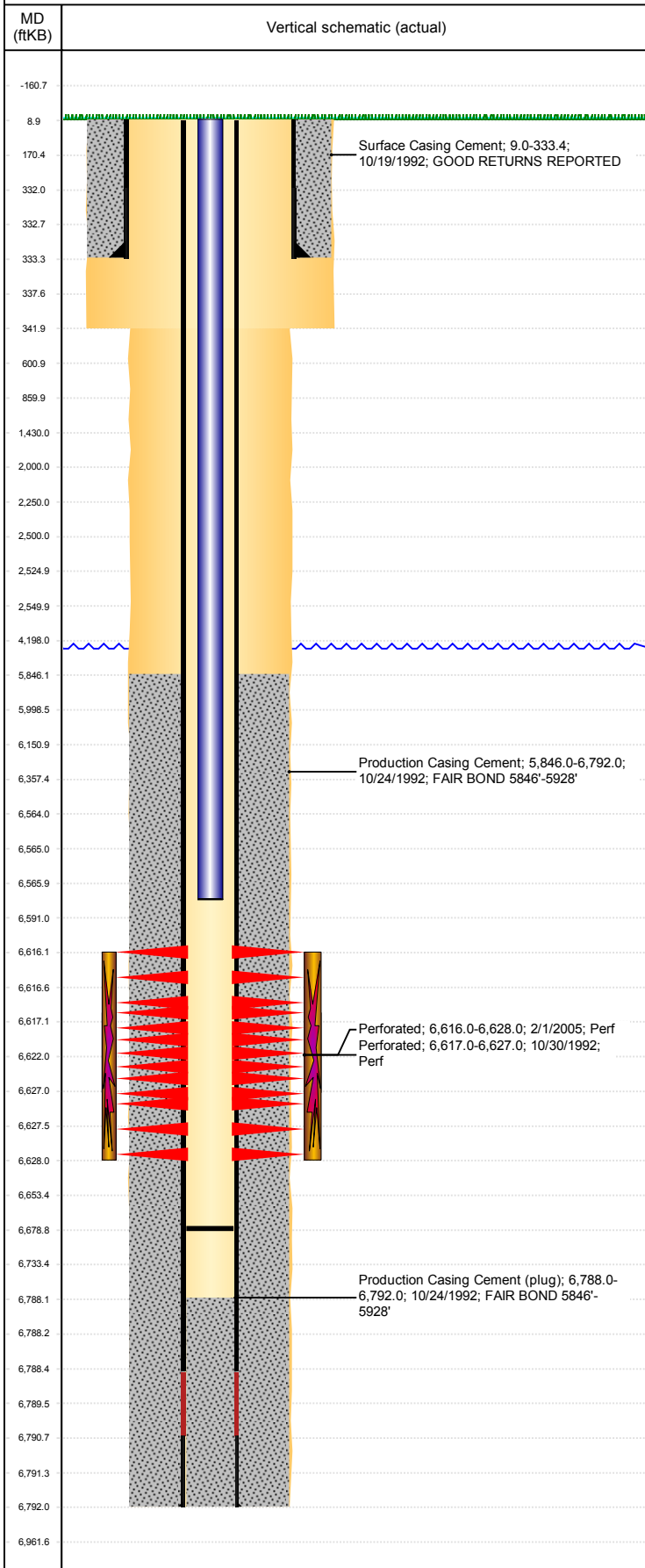


Well Name: SPIKE STATE CC06-14

VERTICAL, ORIGINAL HOLE, 2/19/2019 3:41:24 PM



Well Header									
API 05-123-16203		Business Unit DJ BASIN			District 15		Well Config VERTICAL		
KB - GL / MSL (ft... 9.00		Spud Date 10/19/1992		P & A Date		Well Production Status SI			SoRT No
Comment DISCREPANCY IN TD, DRL & ST RPTS & CSG TALLY 6786', PROD CSG LANDED @ 6792', USED 6792' FOR TD DISCREPANCY IN SFC CSG SET DEPTH, DRL RPT & 2005 SCHEMATIC 333.4', ST COMP RPT 342', SFC HOLE DEPTH 342'									
Surface Location (Congressional)									
Qtr 3 SE	Qtr 4 SW	Section 6	Twonshp 4	Twonsh... N	Range 63	Rng E/... W	Actual Latitude (°) 40.33550645		Actual Longitude (°) -104.48251743
Wellbore Sections									
Section Des			Size (in)			Act Top, MD (ftKB)		Act Btm, MD (ftKB)	
SURFACE			12 1/4			9		342	
PRODUCTION			7 7/8			342		6,792	
Casing Strings									
Csg Des			Run Date	OD (in)	Wt/Len (lb/ft)	Grade	Top, MD (ftKB)	MD (ftKB)	
Surface			10/19/1992	8 5/8	23.00		9.0	333.4	
Production			10/24/1992	2 7/8	6.50	N-80	9.0	6,792.0	
Cement									
Des				Start Date		Top (ftKB)		Btm (ftKB)	
Surface Casing Cement				10/19/1992		9.0		333.4	
Production Casing Cement				10/24/1992		5,846.0		6,792.0	
Zone Statuses									
Zone Name	Status Date	Status	Fluid Type	Job				Prod Method	
CODELL	2/3/2010	PR	Water					Flowing	
CODELL	10/27/2016	SI							
Perforation Data									
Linked Zone		Bnch/Stg	Entered Shot Total	Top (ftKB)		Btm (ftKB)		Date	
CODELL, ORIGINAL HOLE			48	6,616.00		6,628.00		2/1/2005	
CODELL, ORIGINAL HOLE			40	6,617.00		6,627.00		10/30/1992	
Stimulation Intervals									
Zone			Start Date			Top (ftKB)		Btm (ftKB)	
CODELL, ORIGINAL HOLE			2/8/2005			6,616.0		6,628.0	
CODELL, ORIGINAL HOLE			11/3/1992			6,617.0		6,627.0	
Other In Hole									
Run Date		Des				OD (in)	Top (ftKB)	Btm (ftKB)	
Logs									
Date		Type				Top, MD (ftKB)		Btm, MD (ftKB)	
10/23/1992		COMPENSATED DENSITY				5,900.0		6,614.0	
10/30/1992		CBL/CCL/GR				5,750.0		6,689.0	
Plug Back Total Depths									
Date		Type		Com				Depth (ftKB)	
1/31/2005		FILL		CLEAN OUT				6,752.0	
2/11/2005		FILL		TAGGED FILL				6,678.9	