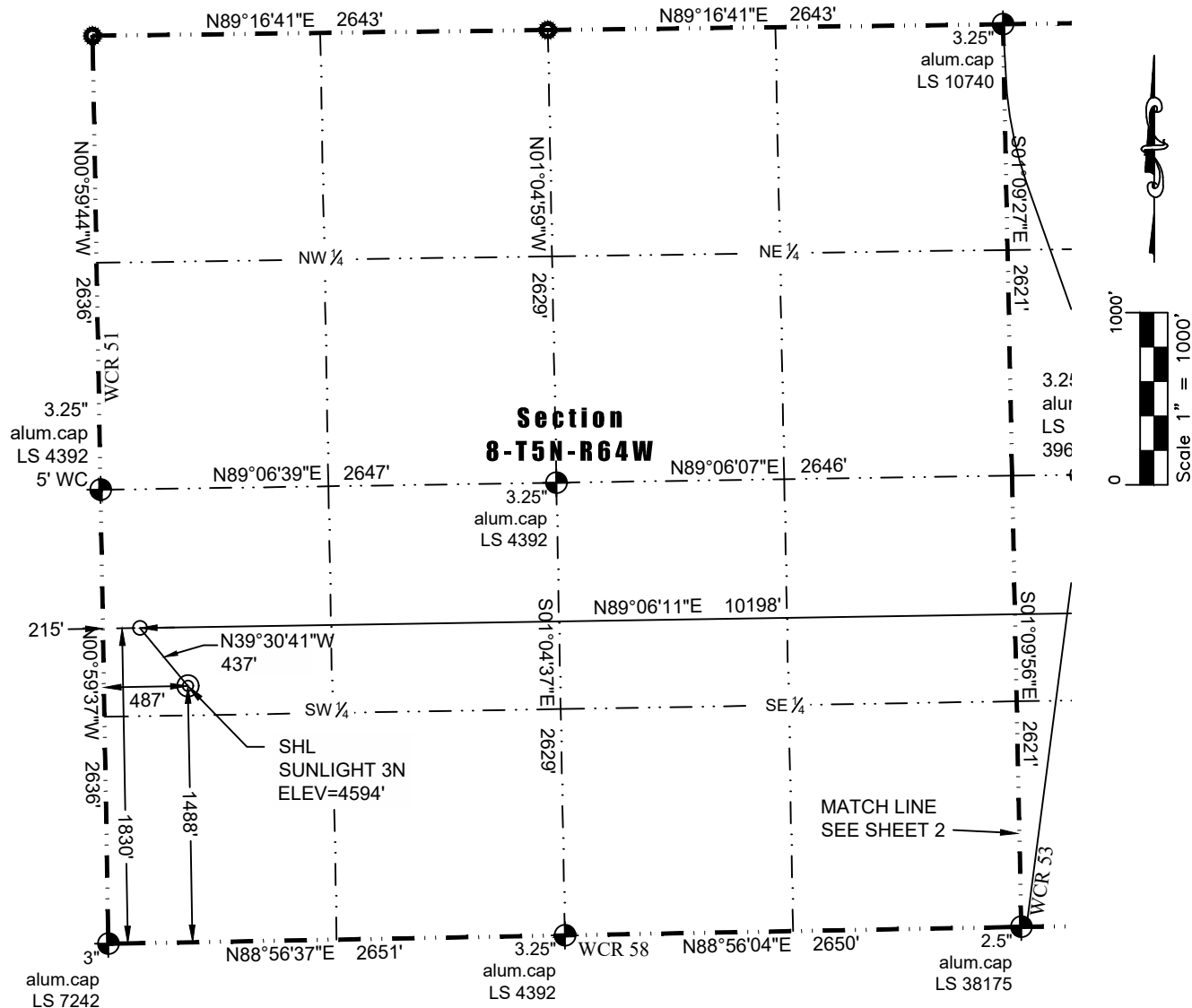


WELL LOCATION CERTIFICATE

THIS MAP DOES NOT REPRESENT A BOUNDARY SURVEY



In accordance with a request from Mac Neumann of PDC Energy, Inc., Washburn Land Surveying, LLC has determined the location of the **SUNLIGHT 3N** well site to be SHL: 1488' FSL and 487' FWL, (EPL: 1830' FSL and 215' FWL, BHL: 1830' FSL and 150' FEL), as measured at ninety (90) degrees from the section lines of Sections 8 and 9, Township 5 North, Range 64 West of the 6th Principal Meridian, Weld County Colorado.

Proposed Surface Hole Data:
 Latitude: N 40.410531°
 Longitude: W 104.581804°
 PDOP: 2.1

Proposed Entry Point Data:
 Latitude: N 40.411464°
 Longitude: W 104.582791°

Proposed Bottom Hole Data:
 Latitude: N 40.411607°
 Longitude: W 104.546168°

Nearest Cultural Items:
 Building: 1045' N
 Building Unit: 1091' N
 Above Ground Utility: 505' W
 Public Road: 477' W

Property Line: 487' W
 Railroad: +5280
 High Occupancy Building Unit: +5280
 Designated Outside Activity Area: +5280

LEGEND

- - Found Survey Monument
- - Calculated Location
- ⊙ - Surface Hole Location (SHL)
- - Entry Point Location (EPL)
- ✕ - Bottom Hole Location (BHL)

I hereby certify that this Well Location Certificate was prepared by me or under my direct supervision on 1/24/2019 for and on behalf of PDC Energy, Inc. That it is not a Land Survey Plat or an Improvement Survey Plat and that it is not to be relied upon for establishment of fences, buildings, or other future improvement lines.

John Robert McGehee LS#38219
 Well: SUNLIGHT 3N

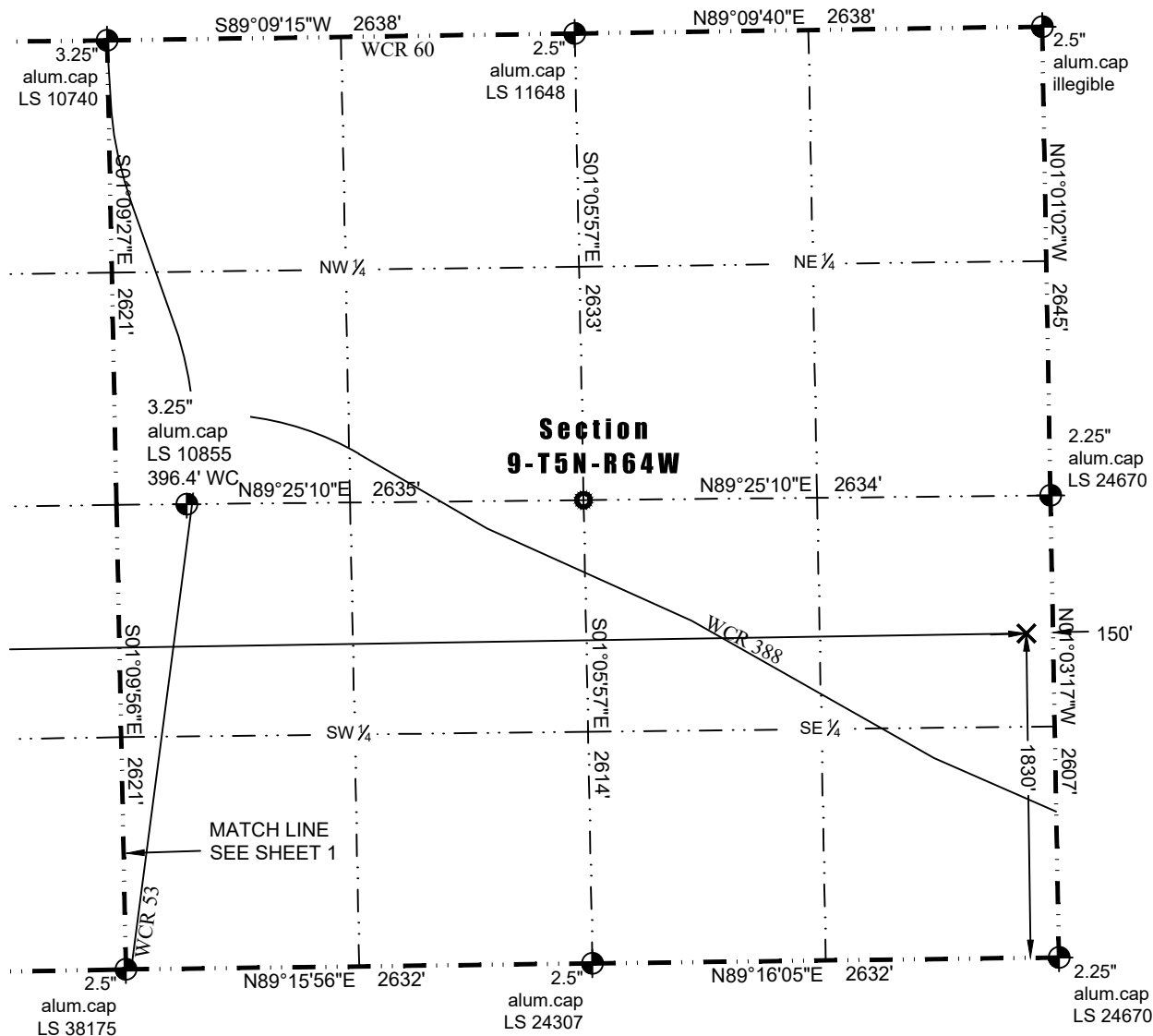
Notes:

- Bearings and distances based on NAD 83 Colorado North State Plane Coordinate, using RTK GPS observations taken 12/8/16 by operator Jason Dahlman.
- Conversion factor to ground (1.0002571888).
- Elevations based on NAVD 88 GPS heights and Geoid 2009 corrections.
- See Location Drawing for visible improvements within 500 feet of Pad Site.
- The surface use is a grazing pasture.

NOTICE: According to Colorado law you must commence any legal action based upon any defect in this W.L.C. within three years after you first discover such defect. In no event may any action based upon any defect in this W.L.C. be commenced more than ten years from this said date of the certification shown hereon.

WELL LOCATION CERTIFICATE

THIS MAP DOES NOT REPRESENT A BOUNDARY SURVEY



- LEGEND**
- ⊕ - Found Survey Monument
 - - Calculated Location
 - ⊙ - Surface Hole Location (SHL)
 - - Entry Point Location (EPL)
 - ✕ - Bottom Hole Location (BHL)

