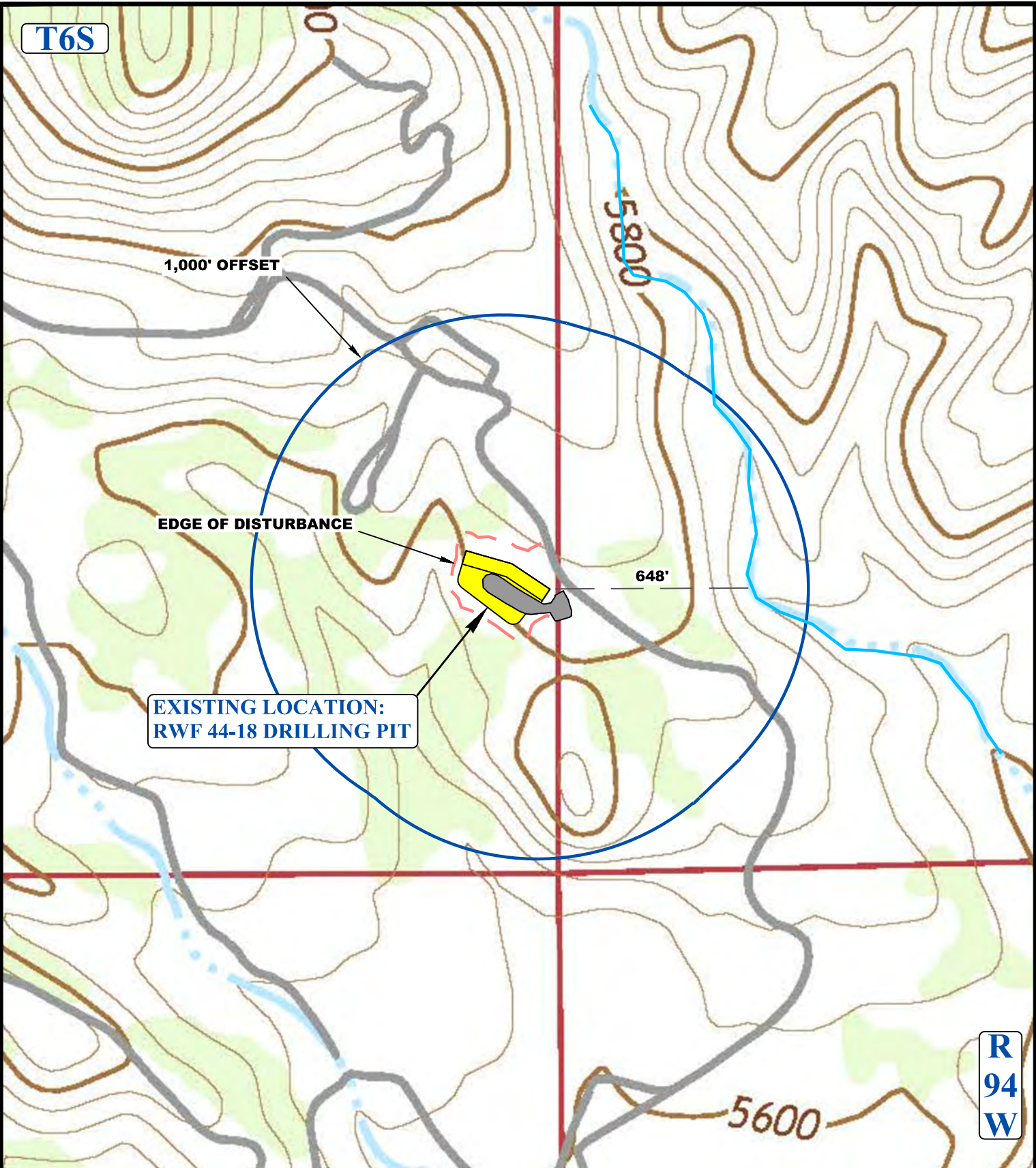


T6S

R  
94  
W







1,000' OFFSET

EDGE OF DISTURBANCE

EXISTING LOCATION:  
RWF 44-18 DRILLING PIT

648'

**LEGEND:**

-  EXISTING DRAINAGE
-  1000' OFFSET BOUNDARY
-  EDGE OF DISTURBANCE
-  FLOOD PLAINS



**UELS, LLC**  
 Corporate Office \* 85 South 200 East  
 Vernal, UT 84078 \* (435) 789-1017



**TEP Rocky Mountain LLC**

**RWF 44-18 DRILLING PIT**  
 SECTION 18, T6S, R94W, 6th P.M.  
 GARFIELD COUNTY, COLORADO

SURVEYED BY	BART HUNTING, C.R.	02-15-18	SCALE
DRAWN BY	A.A.	01-03-19	1 : 6,000
<b>HYDROLOGY MAP</b>			<b>TOPO W</b>