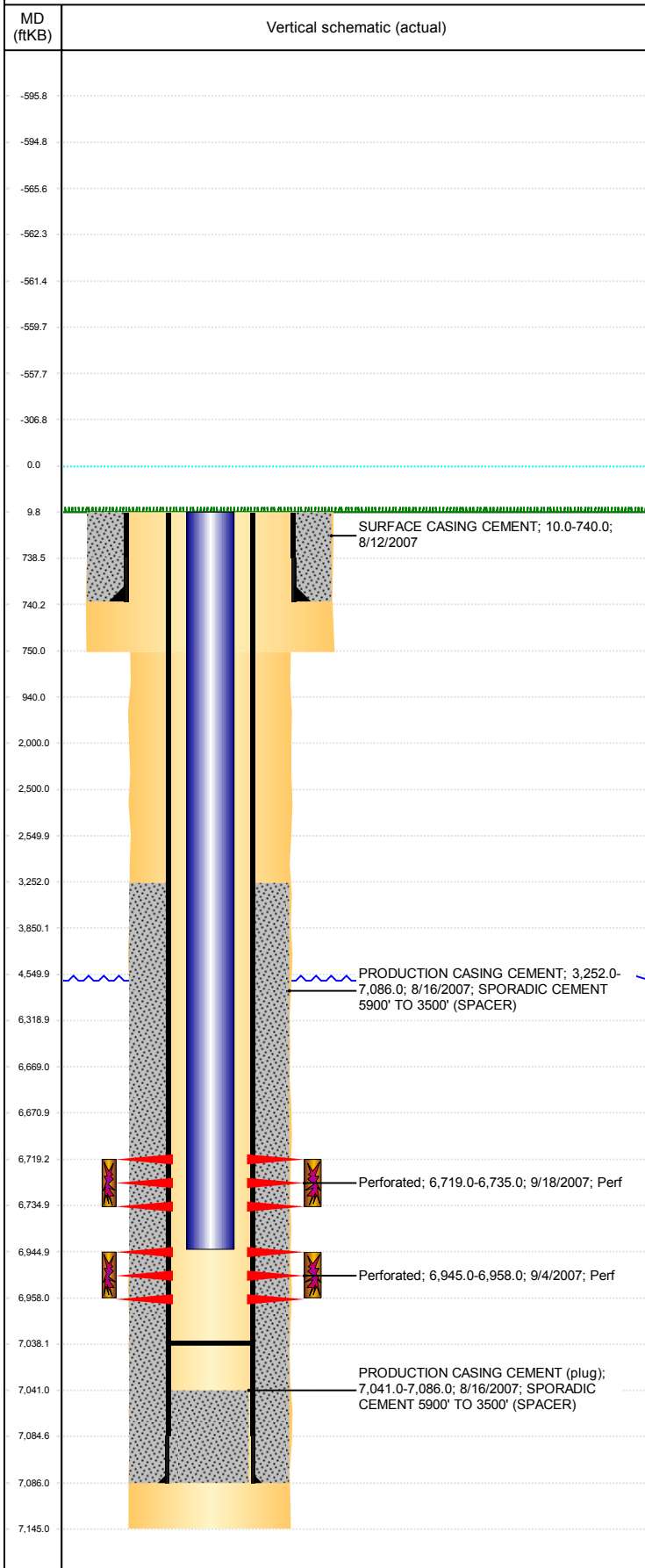


**Well Name: SPIKE STATE D14-13**

VERTICAL, ORIGINAL HOLE, 2/13/2019 3:18:45 PM



Well Header									
API 05-123-25097		Business Unit DJ BASIN			District 15		Well Config VERTICAL		
KB - GL / MSL (ft... 10.00		Spud Date 8/12/2007		P & A Date		Well Production Status PR			SoRT No
Comment									
Surface Location (Congressional)									
Qtr 3 SW	Qtr 4 SW	Section 14	Twonshp 3	Twonsh.... N	Range 64	Rng E/... W	Actual Latitude (") 40.21969393	Actual Longitude (") -104.52588222	
Wellbore Sections									
Section Des			Size (in)			Act Top, MD (ftKB)		Act Btm, MD (ftKB)	
SURFACE			12 1/4			10		750	
PRODUCTION			7 7/8			750		7,145	
Casing Strings									
Csg Des			Run Date	OD (in)	Wt/Len (lb/ft)	Grade	Top, MD (ftKB)	MD (ftKB)	
Surface			8/12/2007	8 5/8	24.00	?	10.0	740.0	
Production			8/16/2007	4 1/2	11.60	M-80	10.0	7,086.0	
Cement									
Des				Start Date		Top (ftKB)		Btm (ftKB)	
SURFACE CASING CEMENT				8/12/2007		10.0		740.0	
PRODUCTION CASING CEMENT				8/16/2007		3,252.0		7,086.0	
Zone Statuses									
Zone Name	Status Date	Status	Fluid Type	Job				Prod Method	
CODELL	7/17/2009	PR	Water	DRILLING/COMPLETION - ORIGINAL, 8/12/2007...				Flowing	
CODELL	6/9/2017	PR							
NIOBRARA	10/2/2007	PR							
NIOBRARA	7/17/2009	PR	Water					Flowing	
Perforation Data									
Linked Zone			Bnch/Stg	Entered Shot Total	Top (ftKB)		Btm (ftKB)		Date
NIOBRARA, ORIGINAL HOLE				64	6,719.00		6,735.00		9/18/2007
CODELL, ORIGINAL HOLE				52	6,945.00		6,958.00		9/4/2007
Stimulation Intervals									
Zone				Start Date		Top (ftKB)		Btm (ftKB)	
NIOBRARA, ORIGINAL HOLE				9/25/2007		6,719.0		6,735.0	
CODELL, ORIGINAL HOLE				9/18/2007		6,945.0		6,958.0	
NIOBRARA, ORIGINAL HOLE				9/18/2007					
Other In Hole									
Run Date		Des				OD (in)	Top (ftKB)	Btm (ftKB)	
Logs									
Date		Type				Top, MD (ftKB)		Btm, MD (ftKB)	
8/16/2007		COMPENSATED DENSITY				2,700.0		7,085.0	
8/16/2007		INDUCTION				740.0		7,105.0	
8/31/2007		CBL/CCL/GR				3,130.0		7,034.0	
9/5/2017		GYRO				0.0		6,850.0	
Plug Back Total Depths									
Date		Type		Com				Depth (ftKB)	
8/31/2007		FILL		DEPTH LOGGER ON CBL				7,041.0	
1/17/2008		PLUG REMNANTS		DRILL PLUG FREE AND PUCH TO 7038'				7,038.0	