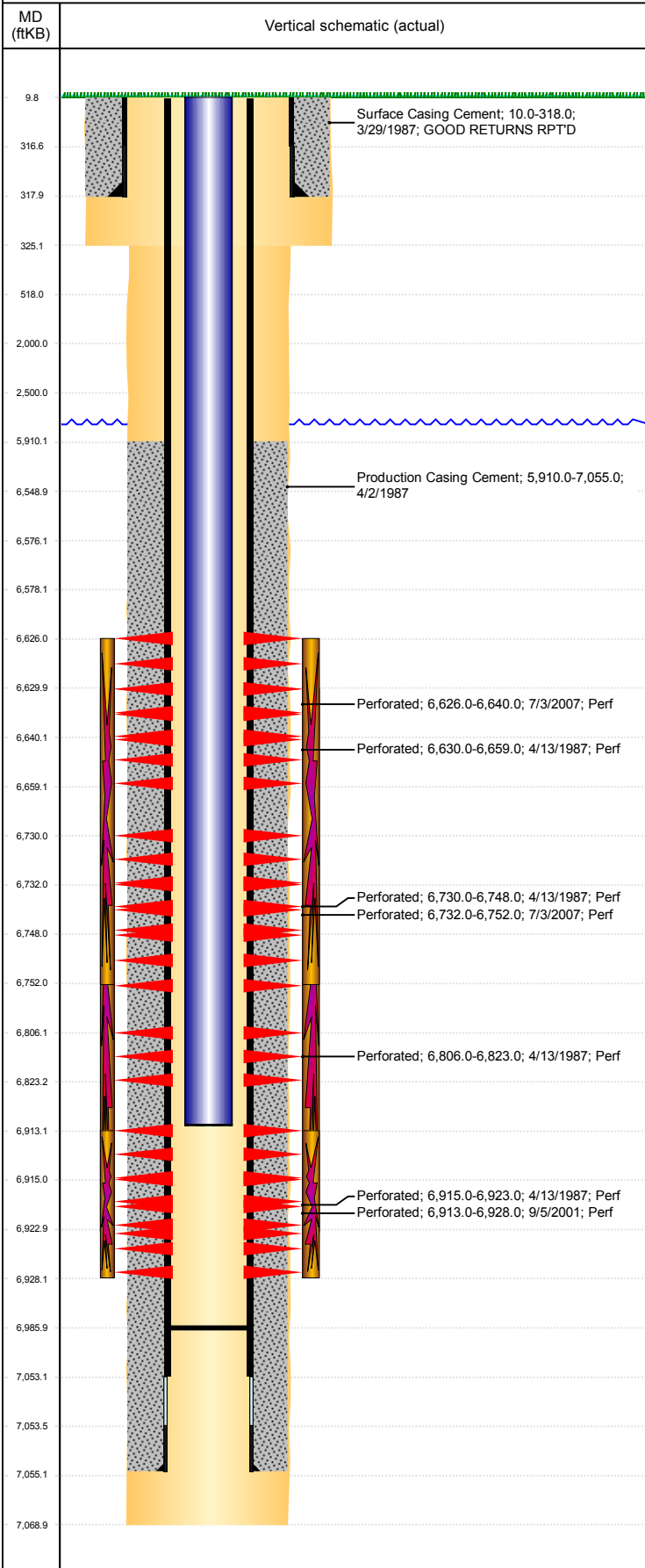


Well Name: MENONI B30-08

VERTICAL, ORIGINAL HOLE, 2/14/2019 3:06:46 PM



Well Header									
API 05-123-13423		Business Unit DJ BASIN		District 15		Well Config VERTICAL			
KB - GL / MSL (ft... 10.00		Spud Date 3/29/1987		P & A Date		Well Production Status PR		SoRT No	
Comment split batt 10/01.									
TD DISCREPANCY: DRL RPT=7050' & 7069', ST CMP=7046'. PROD CSG DEPTH DISCREPANCY: DRL RPT=7055', ST CMP=7046'									
WELLHEAD IS 3000#									
Surface Location (Congressional)									
Qtr 3 SE	Qtr 4 NE	Section 30	Twnshp 5	Twnsh... N	Range 64	Rng E... W	Actual Latitude (°) 40.37183875	Actual Longitude (°) -104.58559056	
Wellbore Sections									
Section Des		Size (in)		Act Top, MD (ftKB)		Act Btm, MD (ftKB)			
SURFACE		12 1/4		10		325			
PRODUCTION		7 7/8		325		7,069			
Casing Strings									
Csg Des		Run Date		OD (in)	Wt/Len (lb/ft)	Grade	Top, MD (ftKB)	MD (ftKB)	
Surface		3/29/1987		8 5/8	24.00		10.0	318.0	
Production		4/2/1987		4 1/2	15.10		10.0	7,055.0	
Cement									
Des		Start Date		Top (ftKB)		Btm (ftKB)			
Surface Casing Cement		3/29/1987		10.0		318.0			
Production Casing Cement		4/2/1987		5,910.0		7,055.0			
Zone Statuses									
Zone Name		Status Date	Status	Fluid Type	Job			Prod Method	
NIOBRARA		8/2/2007	PR		RE-FRAC, 6/29/2007 00:00				
NIOBRARA		8/9/2007	PR		COMMINGLE ZONES, 8/3/2007 00:00				
CODELL		9/12/2001	PR		RE-FRAC, 8/31/2001 00:00				
CODELL		8/9/2007	PR		COMMINGLE ZONES, 8/3/2007 00:00				
Perforation Data									
Linked Zone		Bnch/Stg	Entered Shot Total	Top (ftKB)	Btm (ftKB)	Date			
NIOBRARA, ORIGINAL HOLE			56	6,626.00	6,640.00	7/3/2007			
NIOBRARA, ORIGINAL HOLE		A	3	6,630.00	6,659.00	4/13/1987			
NIOBRARA, ORIGINAL HOLE		B	5	6,730.00	6,748.00	4/13/1987			
NIOBRARA, ORIGINAL HOLE			80	6,732.00	6,752.00	7/3/2007			
NIOBRARA, ORIGINAL HOLE		C	2	6,806.00	6,823.00	4/13/1987			
CODELL, ORIGINAL HOLE			60	6,913.00	6,928.00	9/5/2001			
CODELL, ORIGINAL HOLE			5	6,915.00	6,923.00	4/13/1987			
Stimulation Intervals									
Zone		Start Date		Top (ftKB)		Btm (ftKB)			
NIOBRARA, ORIGINAL HOLE		7/20/2007		6,626.0		6,752.0			
NIOBRARA-CODELL, ORIGINAL HOLE		4/14/1987		6,630.0		6,923.0			
CODELL, ORIGINAL HOLE		9/10/2001		6,913.0		6,928.0			
Other In Hole									
Run Date		Des		OD (in)	Top (ftKB)	Btm (ftKB)			
Logs									
Date		Type				Top, MD (ftKB)	Btm, MD (ftKB)		
4/1/1987		INDUCTION				317.0	7,062.0		
4/2/1987		FDC/CNL-GR				3,500.0	7,067.0		
4/13/1987		CEMENT BOND				5,712.0	6,954.0		
6/2/2016		GYRO				10.0	6,800.0		
Plug Back Total Depths									
Date		Type	Com			Depth (ftKB)			
9/4/2001		FILL	CLEAN OUT			6,986.0			
8/6/2007		FILL	CLEAN OUT			6,986.0			