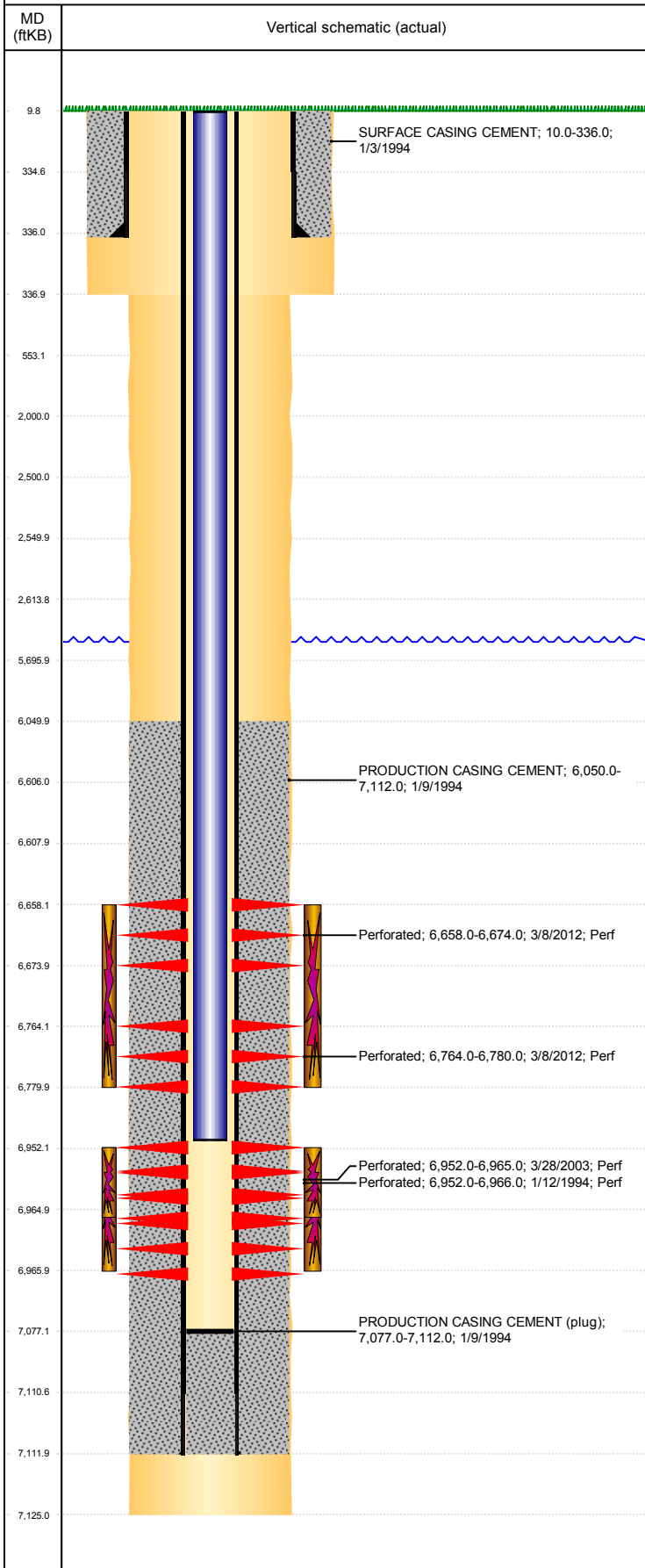


Well Name: MILLER B32-06

VERTICAL, ORIGINAL HOLE, 2/14/2019 9:27:29 AM



Well Header									
API 05-123-16858		Business Unit DJ BASIN			District 15		Well Config VERTICAL		
KB - GL / MSL (ft... 10.00		Spud Date 1/3/1994		P & A Date		Well Production Status SI			SoRT No
Comment KEEP WIRES ON GATES CLOSED AT ALL TIMES HORSES PRESENT									
Surface Location (Congressional)									
Qtr 3 SE	Qtr 4 NW	Section 32	Twonshp 5	Twonsh.... N	Range 64	Rng E/... W	Actual Latitude (°) 40.35741863	Actual Longitude (°) -104.57603904	
Wellbore Sections									
Section Des			Size (in)			Act Top, MD (ftKB)		Act Btm, MD (ftKB)	
SURFACE			12 1/4			10		337	
PRODUCTION			7 7/8			337		7,125	
Casing Strings									
Csg Des			Run Date		OD (in)	Wt/Len (lb/ft)	Grade	Top, MD (ftKB)	MD (ftKB)
Surface			1/3/1994		8 5/8	24.00	J-55	10.0	336.0
Production			1/9/1994		2 7/8	6.50	N-80	10.0	7,112.0
Cement									
Des					Start Date		Top (ftKB)		Btm (ftKB)
SURFACE CASING CEMENT					1/3/1994		10.0		336.0
PRODUCTION CASING CEMENT					1/9/1994		6,050.0		7,112.0
Zone Statuses									
Zone Name		Status Date		Status	Fluid Type	Job			Prod Method
CODELL		6/30/2010		PR	Water				Flowing
CODELL		11/29/2016		SI					
NIOBRARA		6/30/2010		PR	Water	RECOMPLETION, 3/3/2012 06:00			Flowing
NIOBRARA		4/4/2012		PR	Gas				
Perforation Data									
Linked Zone			Bnch/Stg	Entered Shot Total	Top (ftKB)		Btm (ftKB)		Date
NIOBRARA, ORIGINAL HOLE				64	6,658.00		6,674.00		3/8/2012
NIOBRARA, ORIGINAL HOLE				64	6,764.00		6,780.00		3/8/2012
CODELL, ORIGINAL HOLE				52	6,952.00		6,965.00		3/28/2003
CODELL, ORIGINAL HOLE				56	6,952.00		6,966.00		1/12/1994
Stimulation Intervals									
Zone				Start Date		Top (ftKB)		Btm (ftKB)	
NIOBRARA, ORIGINAL HOLE				3/18/2012		6,658.0		6,780.0	
CODELL, ORIGINAL HOLE				1/13/1994		6,952.0		6,966.0	
CODELL, ORIGINAL HOLE				4/7/2003		6,952.0		6,965.0	
Other In Hole									
Run Date		Des				OD (in)	Top (ftKB)		Btm (ftKB)
Logs									
Date		Type				Top, MD (ftKB)		Btm, MD (ftKB)	
1/9/1994		COMPENSATED DENSITY				6,100.0		7,146.6	
1/9/1994		INDUCTION				6,100.0		7,146.6	
1/12/1994		CEMENT BOND				5,930.0		7,072.0	
Plug Back Total Depths									
Date		Type		Com				Depth (ftKB)	
1/12/1994		CEMENT PLUG		DEPTH LOGGER				7,077.0	
3/27/2012		CEMENT PLUG		TBG TAG W/214JTS & N/C C/O W-P/S				7,077.0	