



Lat40°, Inc. 6250 W. 10th Street, Unit 2, Greeley, CO 970-515-5294

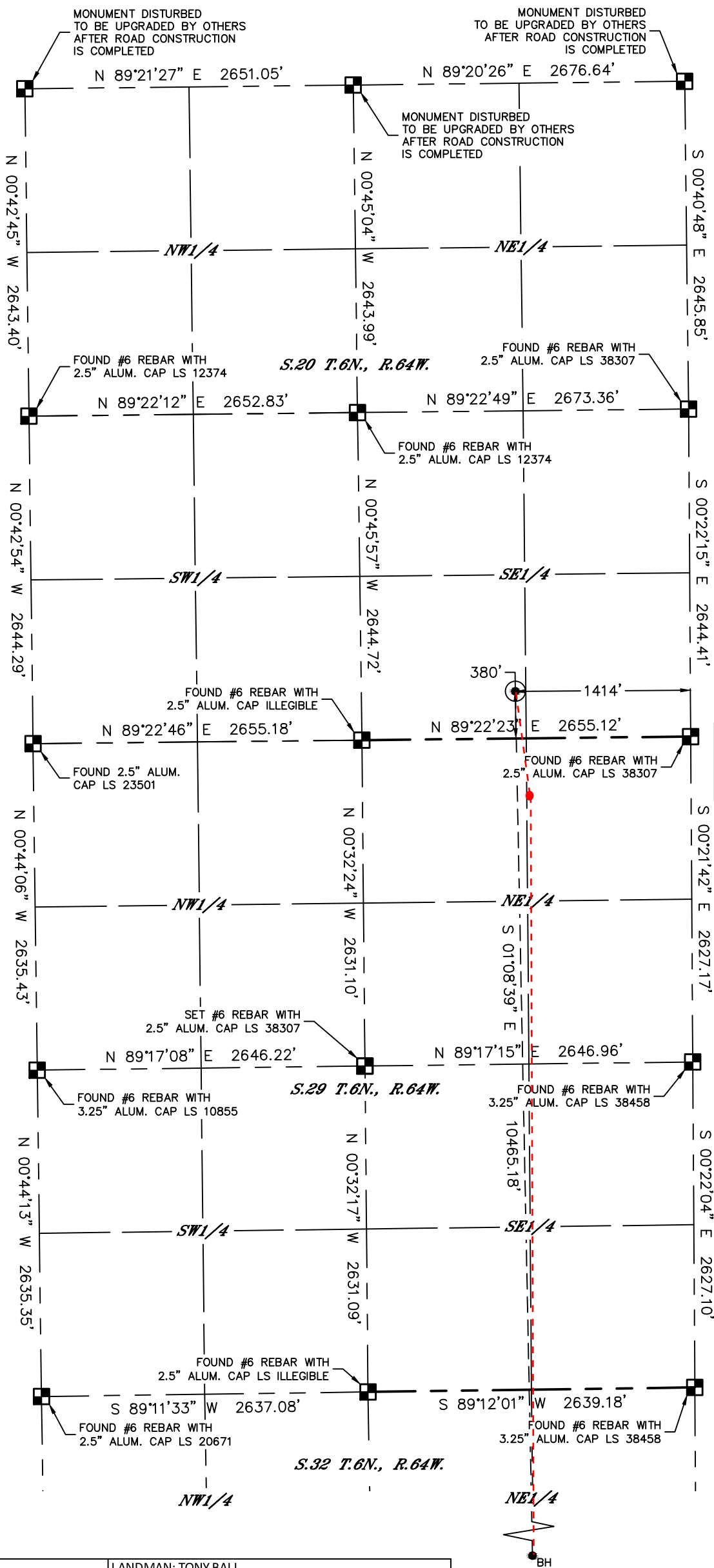
APPROVED

By JacobEicher at 11:21 am, Nov 16, 2018

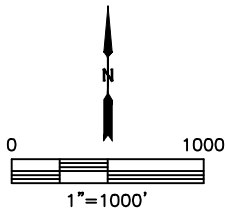
WELL LOCATION CERTIFICATE

RAMPART A32-730

SECTION: 20
TOWNSHIP: 6N
RANGE: 64W
6TH. P.M.
WELD COUNTY, CO



TPZ: 460' FNL, 1320' FEL,
Sec 29-T6N-R64W
HAND DRAWN 11/2018
Depiction was not surveyed and

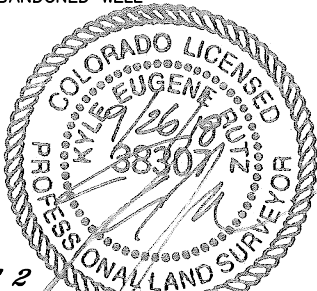


CLIENT: NOBLE ENERGY, INC.					LANDMAN: TONY BALL		
INSTRUMENT OPERATOR: SCOTT SHERARD					SURVEY DATE: 5/30/2018		SURFACE USE: PASTURE
SHL FOOTAGE	SHL LAT °	SHL LONG °	SHL PDOP	SHL ELEV (FT.)	SHL 1/4/1/4	SHL S-T-R	
380	FSL	1414	FEL	40.46527	-104.56969	2.5	4706 SWSE 20-6-64

BHL FOOTAGE	BHL LAT °	BHL LONG °	BHL S-T-R
460	FSL	1287	FEL 40.43655 -104.56934 32-6-64

- NOTE:
- Bearings shown are Grid Bearings of the Colorado State Plane Coordinate System, North Zone, North American Datum 1983. The lineal dimensions as contained herein are based upon the "U.S. Survey Foot."
 - Distances to section lines measured at 90 degrees from said section lines.
 - Ground elevations are based on an observed GPS elevation (NAVD 1988 DATUM).
 - Latitude and Longitude shown are (NAD 83 DATUM).
 - IMPROVEMENTS: See LOCATION DRAWING for all visible improvements within 500' of oil and gas location.
 - This map does not represent a boundary survey.

- LEGEND
- = ALIQUOT MONUMENT AS DESCRIBED
 - = CALCULATED POSITION
 - = SURFACE HOLE LOCATION (SHL)
 - ▲ = ENTRY POINT LOCATION (EP)
 - = BOTTOM HOLE LOCATION (BHL)
 - ⊙ = EXISTING WELL
 - ⊙ = ABANDONED WELL



SHEET 1 OF 2

Kyle E. Rutz—On behalf of Lat40, Inc.
Colorado Licensed Professional Land Surveyor No. 38307
DATE: 9/26/2018
PROJECT#: 2018024

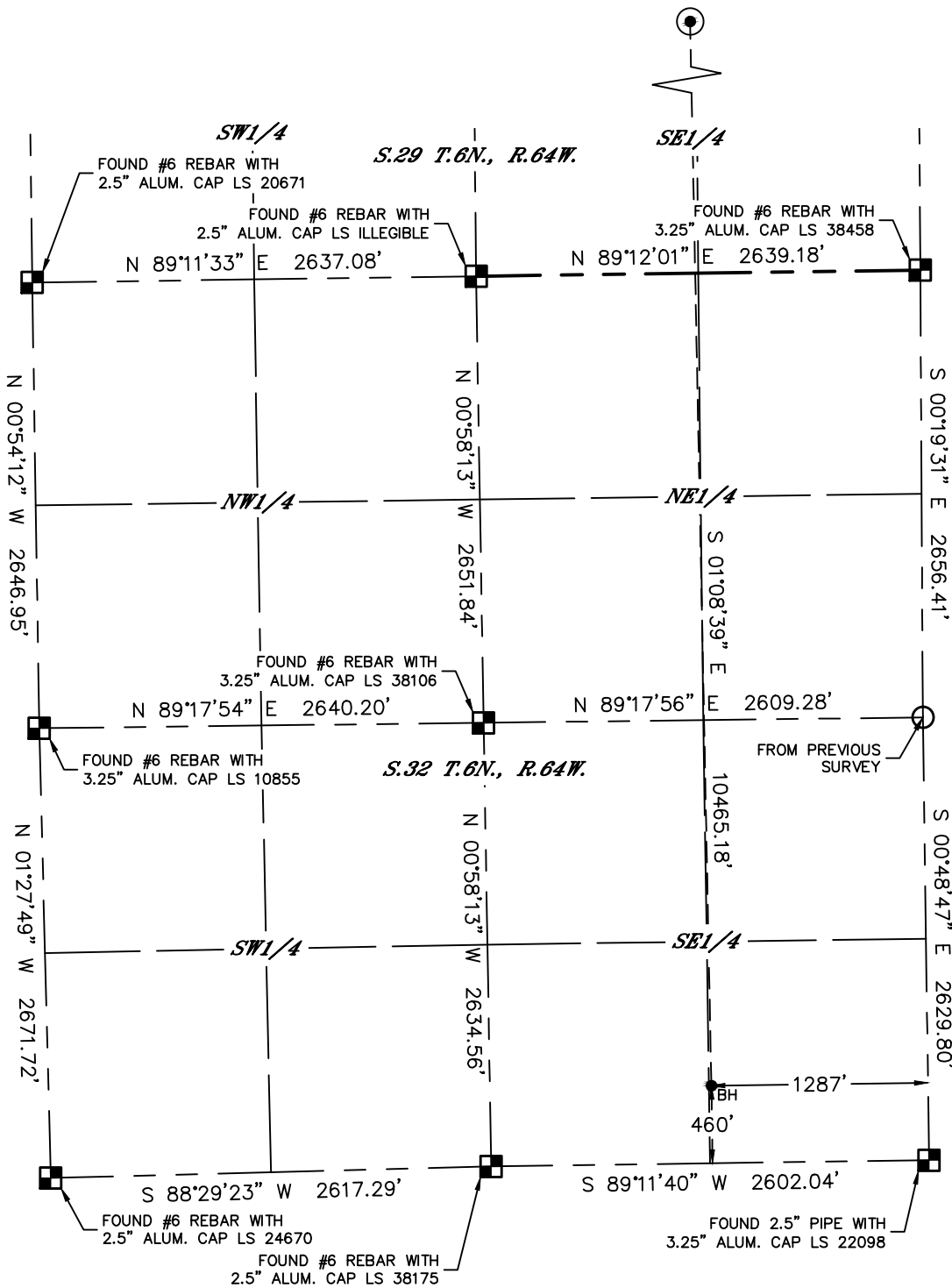


Lat40°, Inc. 6250 W. 10th Street, Unit 2, Greeley, CO 970-515-5294

WELL LOCATION CERTIFICATE

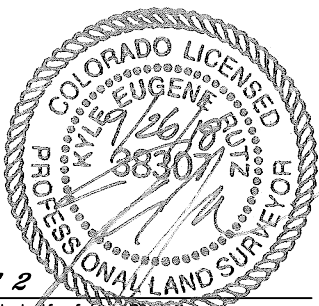
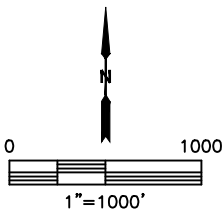
RAMPART A32-730

SECTION: 20
TOWNSHIP: 6N
RANGE: 64W
6TH. P.M.
WELD COUNTY, CO



LEGEND

- = ALIQUOT MONUMENT AS DESCRIBED
- = CALCULATED POSITION
- = SURFACE HOLE LOCATION (SHL)
- ▲ = ENTRY POINT LOCATION (EP)
- = BOTTOM HOLE LOCATION (BHL)
- ⊙ = EXISTING WELL
- ⊙ = ABANDONED WELL



SHEET 2 OF 2

Kyle E. Rutz—On behalf of Lat40, Inc.
Colorado Licensed Professional Land Surveyor No. 38307
DATE: 9/26/2018
PROJECT#: 2018024