



Lat40°, Inc. 6250 W. 10th Street, Unit 2, Greeley, CO 970-515-5294

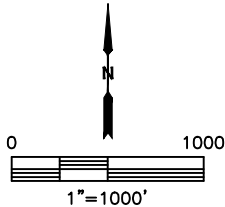
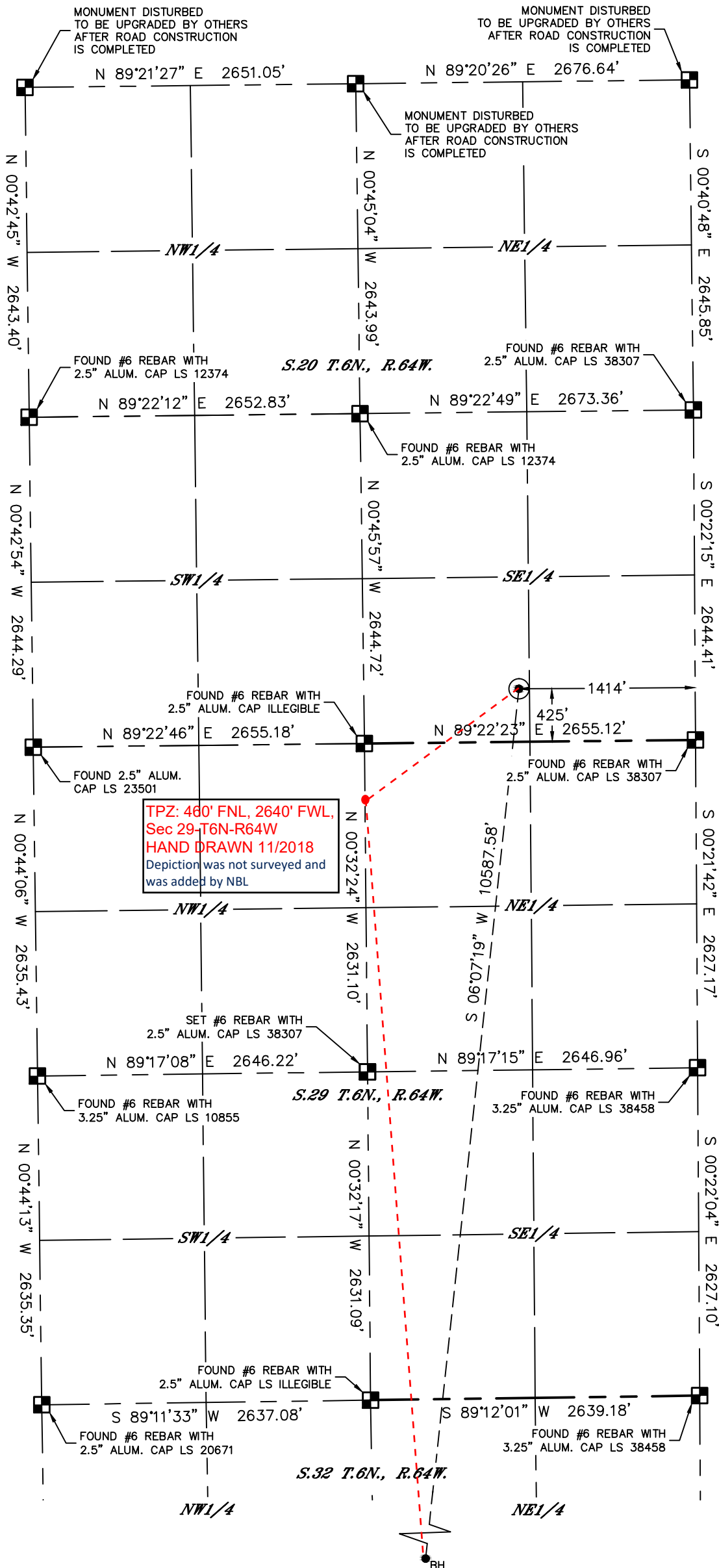
APPROVED

By JacobEicher at 11:23 am, Nov 16, 2018

WELL LOCATION CERTIFICATE

RAMPART A32-751

SECTION: 20
TOWNSHIP: 6N
RANGE: 64W
6TH. P.M.
WELD COUNTY, CO

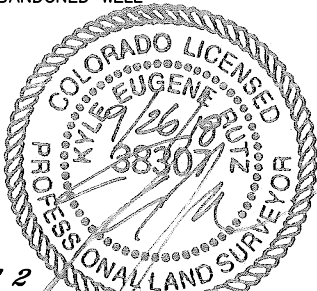


CLIENT: NOBLE ENERGY, INC.				LANDMAN: TONY BALL			
INSTRUMENT OPERATOR: SCOTT SHERARD				SURVEY DATE: 5/30/2018		SURFACE USE: PASTURE	
SHL FOOTAGE		SHL LAT °	SHL LONG °	SHL PDOP	SHL ELEV (FT.)	SHL 1/4/1/4	SHL S-T-R
425	FSL	1414	FEL	40.46539	-104.56969	2.5	4706 SWSE 20-6-64

BHL FOOTAGE		BHL LAT °	BHL LONG °	BHL S-T-R
460	FSL	2599	FWL	40.43654 -104.57414 32-6-64

- NOTE:
- Bearings shown are Grid Bearings of the Colorado State Plane Coordinate System, North Zone, North American Datum 1983. The lineal dimensions as contained herein are based upon the "U.S. Survey Foot."
 - Distances to section lines measured at 90 degrees from said section lines.
 - Ground elevations are based on an observed GPS elevation (NAVD 1988 DATUM).
 - Latitude and Longitude shown are (NAD 83 DATUM).
 - IMPROVEMENTS: See LOCATION DRAWING for all visible improvements within 500' of oil and gas location.
 - This map does not represent a boundary survey.

- LEGEND
- = ALIQUOT MONUMENT AS DESCRIBED
 - = CALCULATED POSITION
 - = SURFACE HOLE LOCATION (SHL)
 - ▲ = ENTRY POINT LOCATION (EP)
 - = BOTTOM HOLE LOCATION (BHL)
 - ⊙ = EXISTING WELL
 - ⊙ = ABANDONED WELL

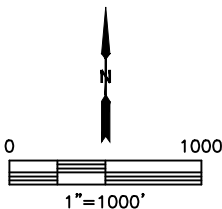
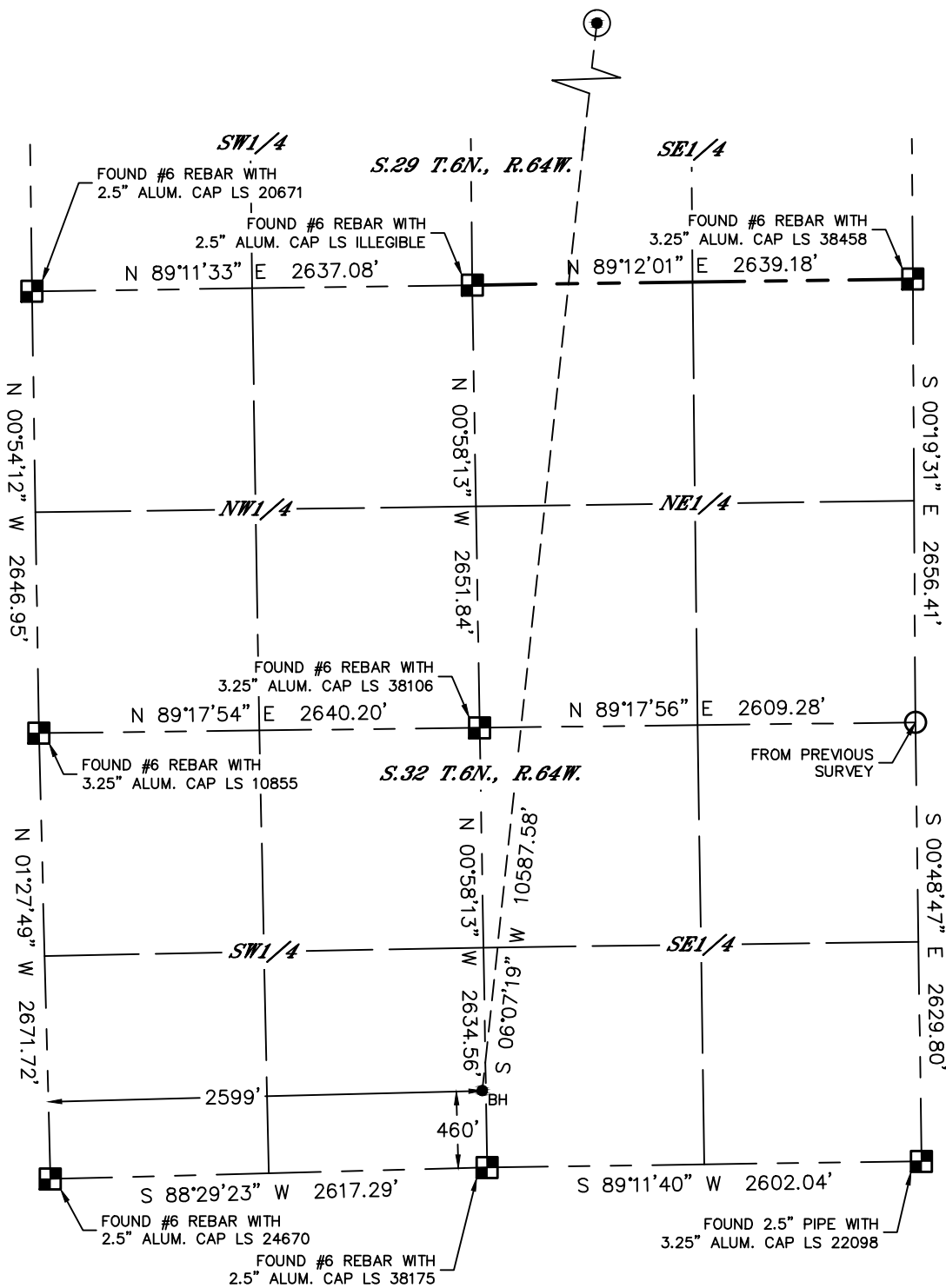


SHEET 1 OF 2
Kyle E. Rutz-On behalf of Lat40, Inc.
Colorado Licensed Professional Land Surveyor No. 38307
DATE: 9/26/2018
PROJECT#: 2018024



WELL LOCATION CERTIFICATE
RAMPART A32-751

SECTION: 20
TOWNSHIP: 6N
RANGE: 64W
6TH. P.M.
WELD COUNTY, CO



- LEGEND
- = ALIQUOT MONUMENT AS DESCRIBED
 - = CALCULATED POSITION
 - = SURFACE HOLE LOCATION (SHL)
 - ▲ = ENTRY POINT LOCATION (EP)
 - = BOTTOM HOLE LOCATION (BHL)
 - ⊙ = EXISTING WELL
 - ⊙ = ABANDONED WELL

