



Lat40°, Inc. 6250 W. 10th Street, Unit 2, Greeley, CO 970-515-5294

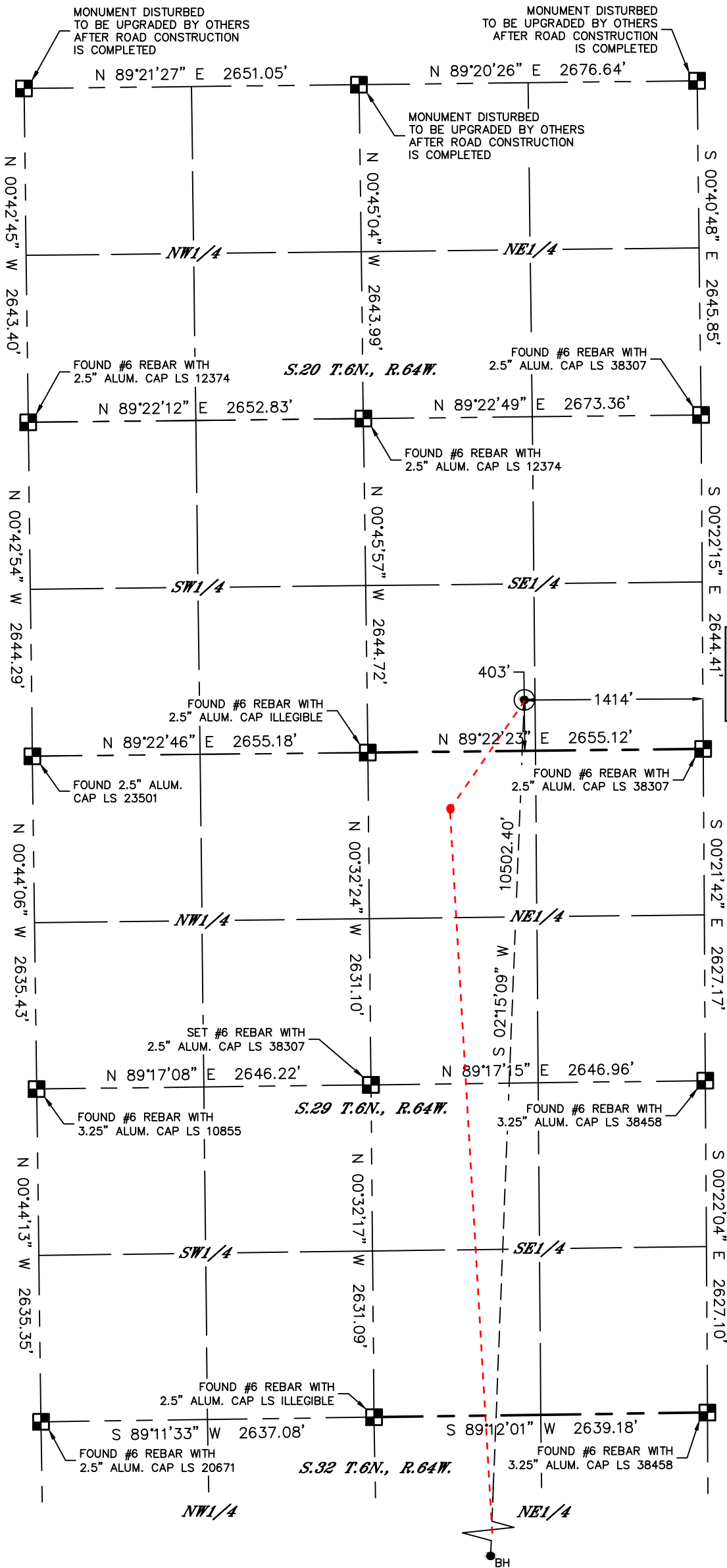
APPROVED

By JacobEicher at 11:22 am, Nov 16, 2018

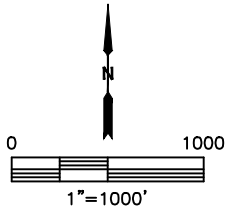
# WELL LOCATION CERTIFICATE

RAMPART A32-739

SECTION: 20  
TOWNSHIP: 6N  
RANGE: 64W  
6TH. P.M.  
WELD COUNTY, CO



TPZ: 460' FNL, 1999' FEL,  
Sec 29-T6N-R64W  
HAND DRAWN 11/2018  
Depiction was not surveyed and  
was added by NBL

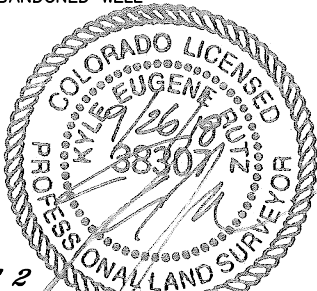


|                                    |     |          |           |                        |                |                      |                   |
|------------------------------------|-----|----------|-----------|------------------------|----------------|----------------------|-------------------|
| CLIENT: NOBLE ENERGY, INC.         |     |          |           | LANDMAN: TONY BALL     |                |                      |                   |
| INSTRUMENT OPERATOR: SCOTT SHERARD |     |          |           | SURVEY DATE: 5/30/2018 |                | SURFACE USE: PASTURE |                   |
| SHL FOOTAGE                        |     | SHL LAT° | SHL LONG° | SHL PDOP               | SHL ELEV (FT.) | SHL 1/4/1/4          | SHL S-T-R         |
| 403                                | FSL | 1414     | FEL       | 40.46533               | -104.56969     | 2.5                  | 4706 SWSE 20-6-64 |

|             |     |          |           |                             |
|-------------|-----|----------|-----------|-----------------------------|
| BHL FOOTAGE |     | BHL LAT° | BHL LONG° | BHL S-T-R                   |
| 460         | FSL | 1909     | FEL       | 40.43654 -104.57157 32-6-64 |

NOTE:  
1) Bearings shown are Grid Bearings of the Colorado State Plane Coordinate System, North Zone, North American Datum 1983. The lineal dimensions as contained herein are based upon the "U.S. Survey Foot."  
2) Distances to section lines measured at 90 degrees from said section lines.  
3) Ground elevations are based on an observed GPS elevation (NAVD 1988 DATUM).  
4) Latitude and Longitude shown are (NAD 83 DATUM).  
5) IMPROVEMENTS: See LOCATION DRAWING for all visible improvements within 500' of oil and gas location.  
6) This map does not represent a boundary survey.

- LEGEND
- = ALIQUOT MONUMENT AS DESCRIBED
  - = CALCULATED POSITION
  - = SURFACE HOLE LOCATION (SHL)
  - ▲ = ENTRY POINT LOCATION (EP)
  - = BOTTOM HOLE LOCATION (BHL)
  - ⊙ = EXISTING WELL
  - ⊙ = ABANDONED WELL



SHEET 1 OF 2

Kyle E. Rutz—On behalf of Lat40, Inc.  
Colorado Licensed Professional Land Surveyor No. 38307  
DATE: 9/26/2018  
PROJECT#: 2018024

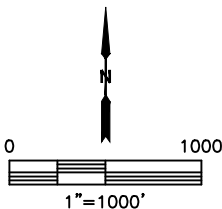
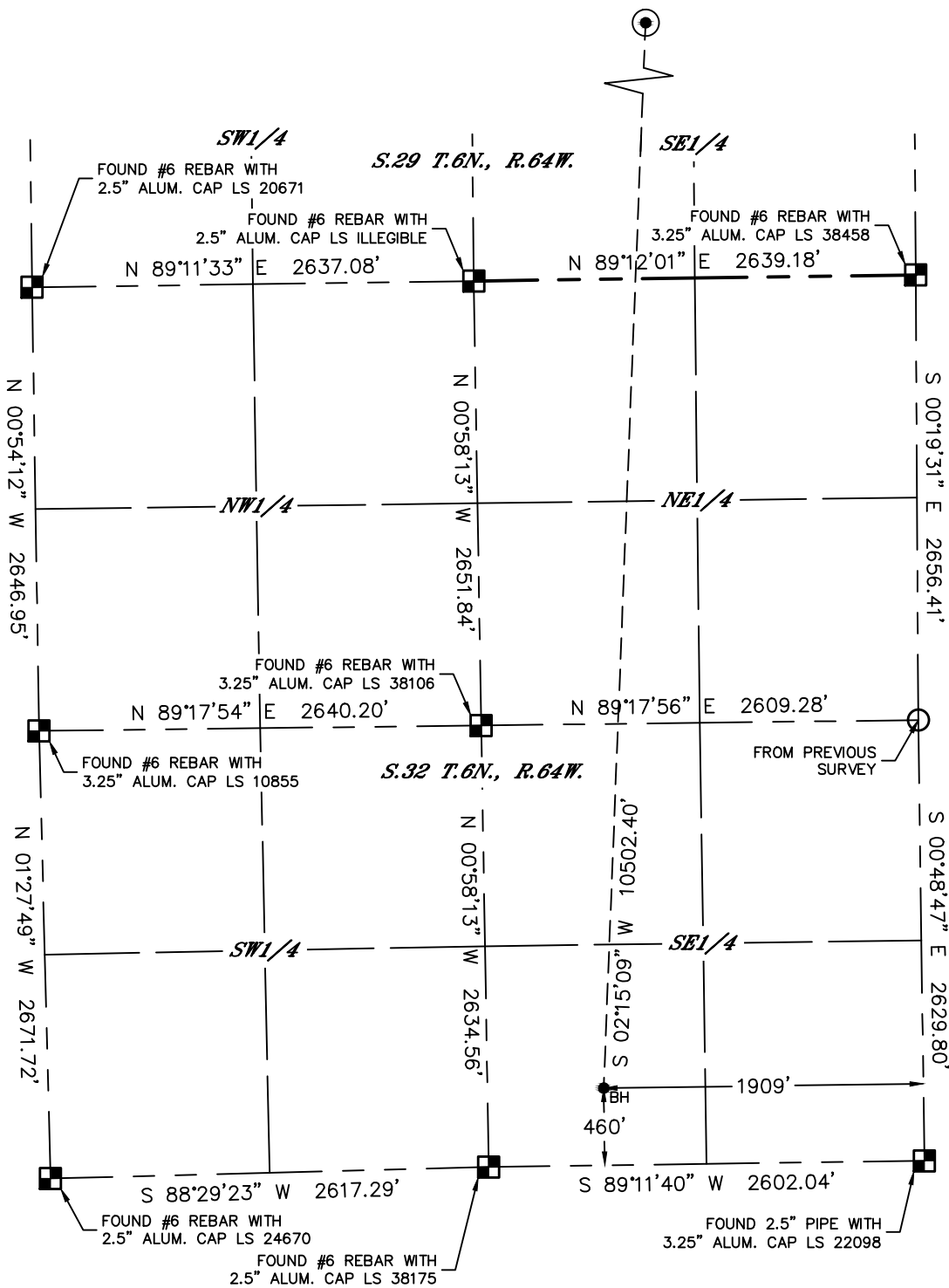


Lat40°, Inc. 6250 W. 10th Street, Unit 2, Greeley, CO 970-515-5294

WELL LOCATION CERTIFICATE

RAMPART A32-739

SECTION: 20  
TOWNSHIP: 6N  
RANGE: 64W  
6TH. P.M.  
WELD COUNTY, CO



- LEGEND
- = ALIQUOT MONUMENT AS DESCRIBED
  - = CALCULATED POSITION
  - = SURFACE HOLE LOCATION (SHL)
  - ▲ = ENTRY POINT LOCATION (EP)
  - = BOTTOM HOLE LOCATION (BHL)
  - ⊙ = EXISTING WELL
  - ⊙ = ABANDONED WELL

