

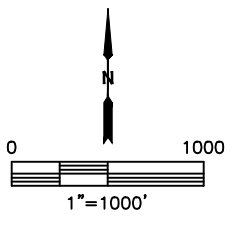
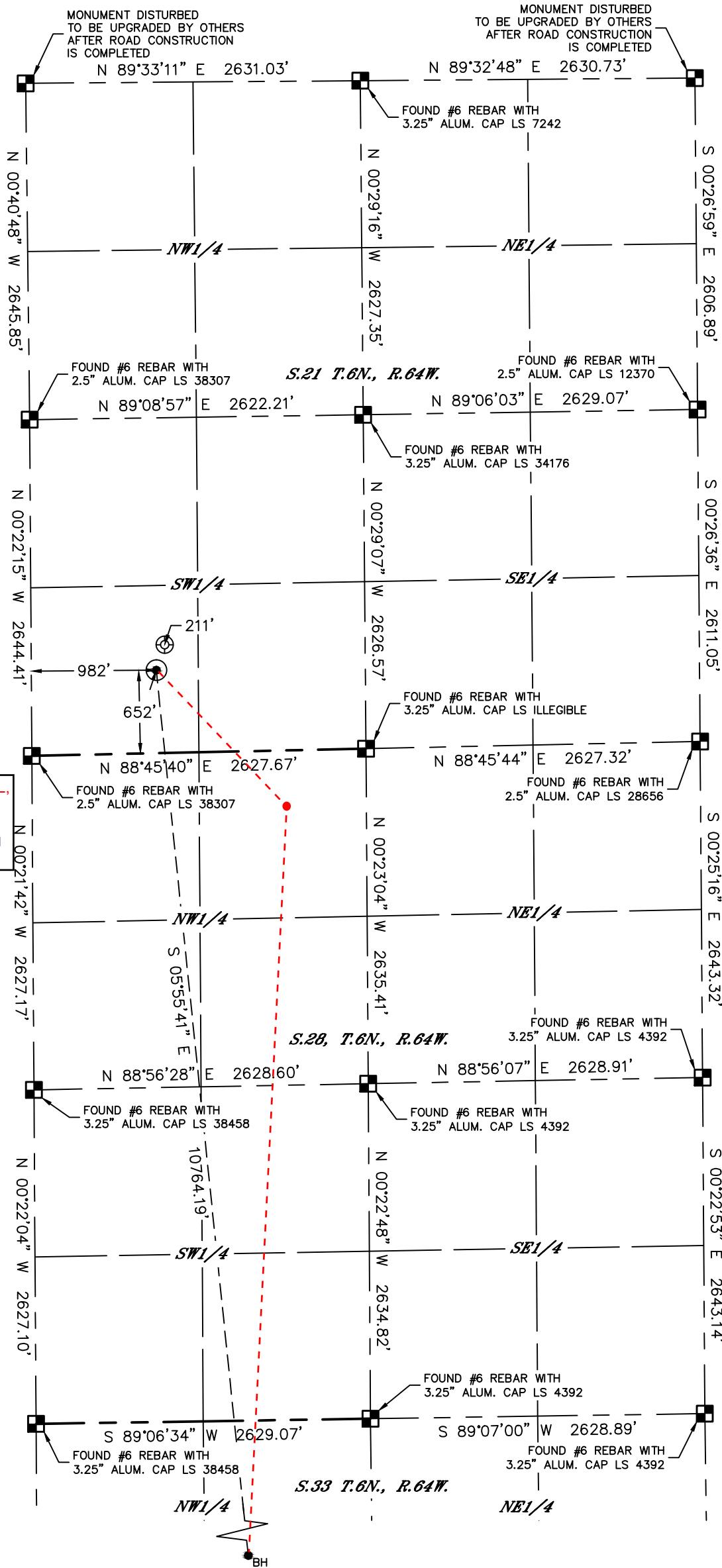


APPROVED
By JacobEicher at 11:24 am, Nov 16, 2018

WELL LOCATION CERTIFICATE

RAMPART A33-760

SECTION: 21
TOWNSHIP: 6N
RANGE: 64W
6TH. P.M.
WELD COUNTY, CO



- LEGEND
- = ALIQUOT MONUMENT AS DESCRIBED
 - = CALCULATED POSITION
 - ⊙ = SURFACE HOLE LOCATION (SHL)
 - ▲ = ENTRY POINT LOCATION (EP)
 - = BOTTOM HOLE LOCATION (BHL)
 - ⊕ = EXISTING WELL
 - ⊖ = ABANDONED WELL

CLIENT: NOBLE ENERGY, INC.				LANDMAN: TONY BALL				
INSTRUMENT OPERATOR: CASEY KOHOUT				SURVEY DATE: 3/21/2018		SURFACE USE: CROP LAND		
SHL FOOTAGE	FSL	FWL	SHL LAT°	SHL LONG°	SHL PDOP	SHL ELEV (FT.)	SHL 1/4/1/4	
652	FSL	982	FWL	40.46605	-104.56108	1.6	4726	SWSW
								21-6-64

BHL FOOTAGE	FSL	FWL	BHL LAT°	BHL LONG°	BHL S-T-R	
460	FSL	2011	FWL	40.43663	-104.55749	33-6-64

NOTE:

- Bearings shown are Grid Bearings of the Colorado State Plane Coordinate System, North Zone, North American Datum 1983. The lineal dimensions as contained herein are based upon the "U.S. Survey Foot."
- Distances to section lines measured at 90 degrees from said section lines.
- Ground elevations are based on an observed GPS elevation (NAVD 1988 DATUM).
- Latitude and Longitude shown are (NAD 83 DATUM).
- IMPROVEMENTS: See LOCATION DRAWING for all visible improvements within 500' of oil and gas location.
- This map does not represent a boundary survey.

