



Lat40°, Inc. 6250 W. 10th Street, Unit 2, Greeley, CO 970-515-5294

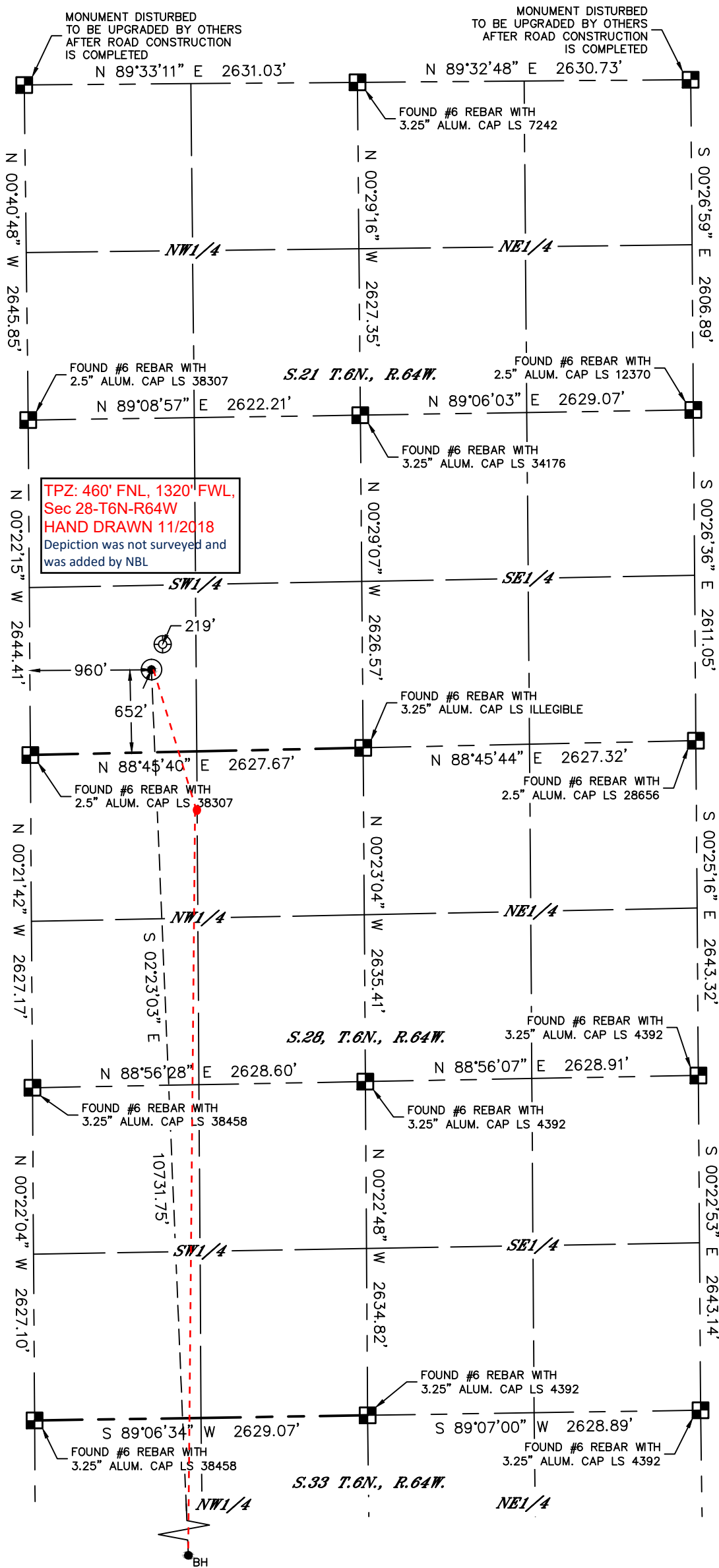
APPROVED

By JacobEicher at 11:25 am, Nov 16, 2018

# WELL LOCATION CERTIFICATE

RAMPART A33-770

SECTION: 21  
TOWNSHIP: 6N  
RANGE: 64W  
6TH. P.M.  
WELD COUNTY, CO



CLIENT: NOBLE ENERGY, INC.				LANDMAN: TONY BALL		
INSTRUMENT OPERATOR: CASEY KOHOUT				SURVEY DATE: 3/21/2018		SURFACE USE: CROP LAND
SHL FOOTAGE		SHL LAT °	SHL LONG °	SHL PDOP	SHL ELEV (FT.)	SHL 1/4/1/4
652	FSL	960	FWL	40.46605	-104.56116	1.5
						4727
						SWSW
						21-6-64

BHL FOOTAGE		BHL LAT °	BHL LONG °	BHL S-T-R
460	FSL	1323	FWL	40.43661
				-104.55996
				33-6-64

NOTE:  
1) Bearings shown are Grid Bearings of the Colorado State Plane Coordinate System, North Zone, North American Datum 1983. The lineal dimensions as contained herein are based upon the "U.S. Survey Foot."  
2) Distances to section lines measured at 90 degrees from said section lines.  
3) Ground elevations are based on an observed GPS elevation (NAVD 1988 DATUM).  
4) Latitude and Longitude shown are (NAD 83 DATUM).  
5) IMPROVEMENTS: See LOCATION DRAWING for all visible improvements within 500' of oil and gas location.  
6) This map does not represent a boundary survey.

- LEGEND
- = ALIQUOT MONUMENT AS DESCRIBED
  - = CALCULATED POSITION
  - = SURFACE HOLE LOCATION (SHL)
  - ▲ = ENTRY POINT LOCATION (EP)
  - = BOTTOM HOLE LOCATION (BHL)
  - ⊙ = EXISTING WELL
  - ⊙ = ABANDONED WELL



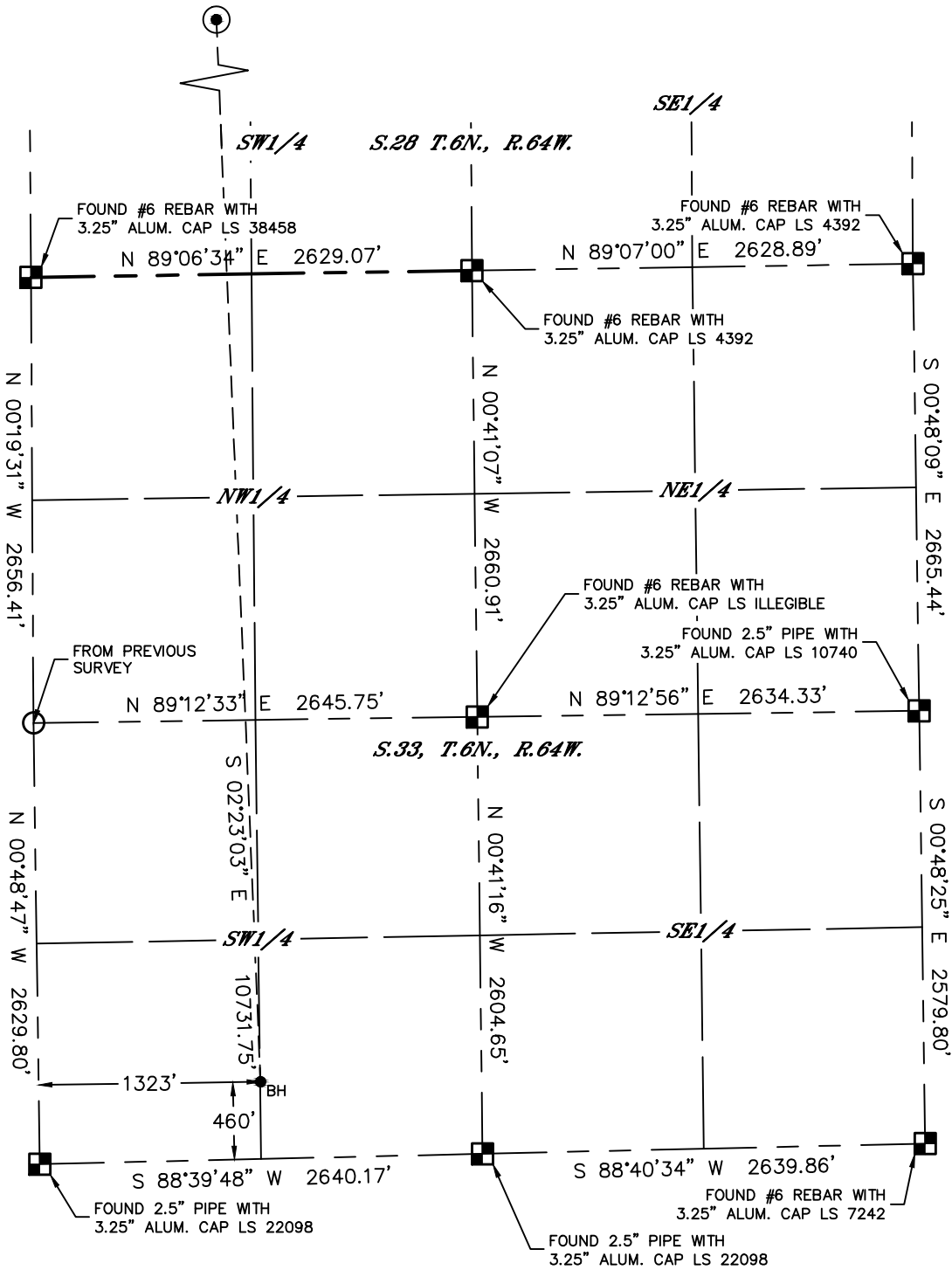
SHEET 1 OF 2

Kyle E. Rutz—On behalf of Lat40°, Inc.  
Colorado Licensed Professional Land Surveyor No. 38307  
DATE: 9/21/2018  
PROJECT#: 2018024



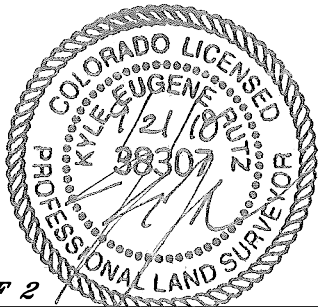
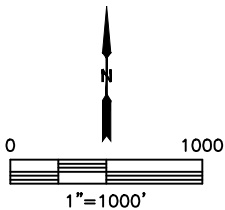
WELL LOCATION CERTIFICATE  
RAMPART A33-770

SECTION: 21  
TOWNSHIP: 6N  
RANGE: 64W  
6TH. P.M.  
WELD COUNTY, CO



LEGEND

- = ALIQUOT MONUMENT AS DESCRIBED
- = CALCULATED POSITION
- ⊙ = SURFACE HOLE LOCATION (SHL)
- ▲ = ENTRY POINT LOCATION (EP)
- = BOTTOM HOLE LOCATION (BHL)
- ⊕ = EXISTING WELL
- ⊖ = ABANDONED WELL



SHEET 2 OF 2

Kyle E. Rutz—On behalf of Lat40°, Inc.  
Colorado Licensed Professional Land Surveyor No. 38307  
DATE: 9/21/2018  
PROJECT#: 2018024