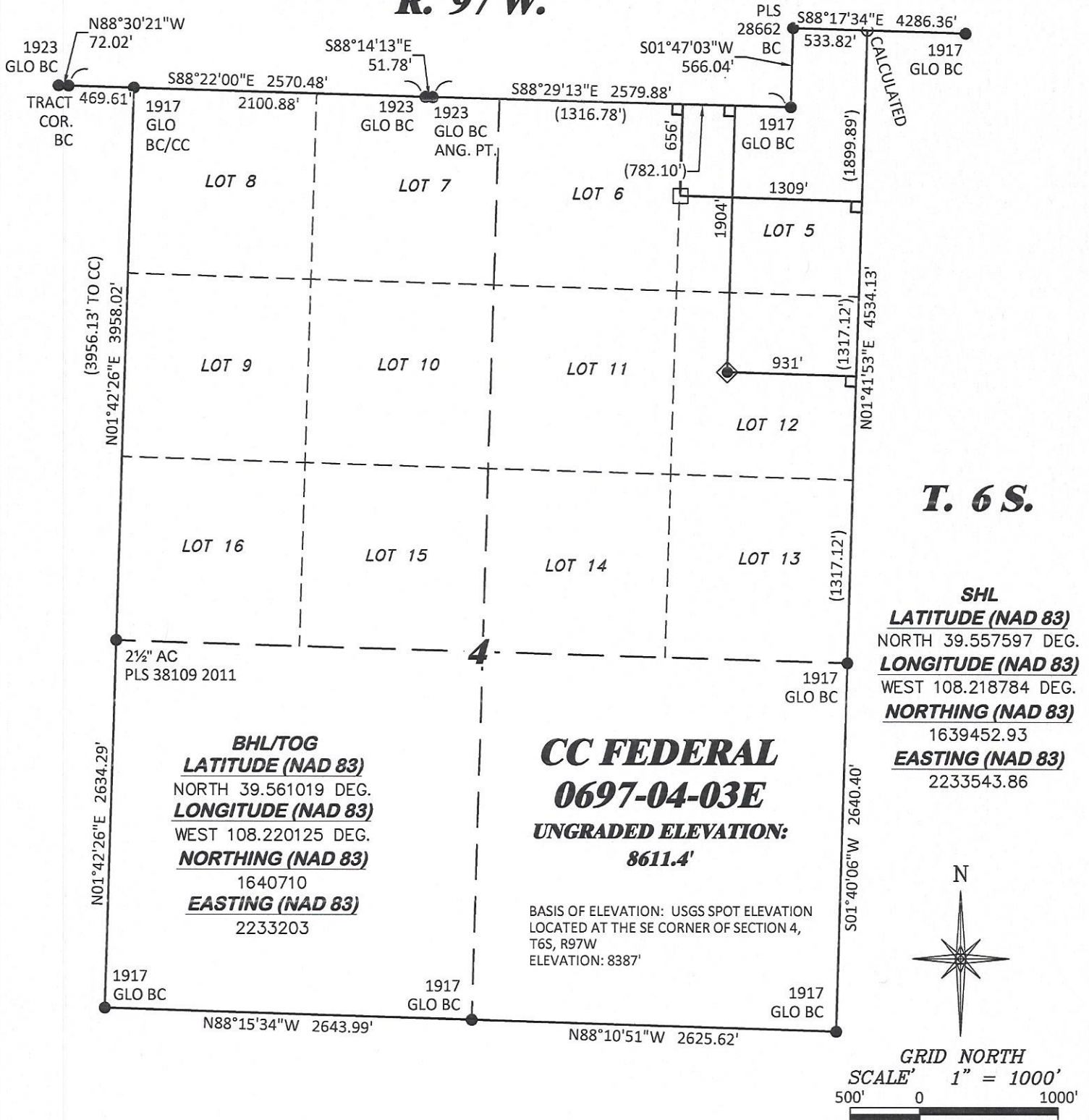
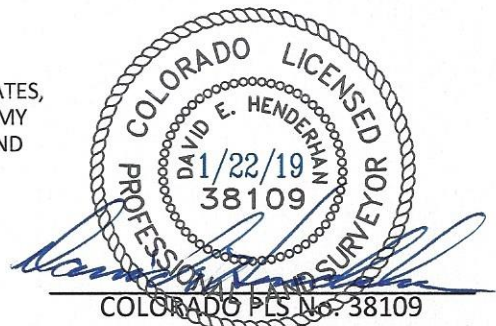


R. 97 W.



CC 604 41-32 PAD



DRG GRIFFIN & ASSOCIATES, INC. (307) 362-5028 1414 ELK ST., ROCK SPRINGS, WY 82901		PLAT OF DRILLING LOCATION IN LOT 12, SECTION 4, FOR LARAMIE ENERGY LLC	
DRAWN: 9/20/2017 - TCM	SCALE: 1" = 1000'	1904' F/NL, & 931' F/EL, SECTION 4, T. 6 S., R. 97 W., 6TH P.M., GARFIELD COUNTY, COLORADO	
REVISED: 1/21/2019 - TCM	DRG JOB No. 21347		
REVISED WELL SPACING	A8-04-03E		