

HALLIBURTON

iCem[®] Service

EXTRACTION OIL & GAS

DUCK CLUB 12W-20-7N Production

Sincerely,
Meghan Jacobs

Legal Notice

Disclaimer:

All information in this report is provided subject to the terms and conditions which govern the services provided by Halliburton. Halliburton personnel use their best efforts in gathering information and their best judgment in interpreting it, but any interpretation, research, analysis or recommendation furnished by Halliburton are opinions based upon inferences from measurements and empirical relationships and assumptions, which inferences and empirical relationships and assumptions are not infallible, and with respect to which professionals in the industry may differ. iCem 3D Displacement results are used to understand how fluids intermix during a cement job. Simulation and 3D displacement results are not intended as and should not be used as a replacement for bond logs in determining top of cement. Current 3D model calculations are known to model more volume than the input volume for standard cases due to known calculation improvements required. For rotational cases, the modeled volume will be impacted by the same calculations impacting the standard cases, as well as additional constraints imposed to make the calculation time required operationally feasible. Therefore, until further notice, 3D displacement results should not be used for replacement of a bond log, or used as an identifier of top of cement. HALLIBURTON IS UNABLE TO GUARANTEE THE ACCURACY OF ANY CHART INTERPRETATION, RESEARCH ANALYSIS, OR JOB RECOMMENDATION and any interpretation or recommendation is not for use of or reliance upon by any third party. The customer has full responsibility for any of its decisions which are based on the information provided in this report.

Table of Contents

1.0 Cementing Job Summary 4

 1.1 Executive Summary4

2.0 Real-Time Job Summary 7

 2.1 Job Event Log7

3.0 Attachments..... 9

 3.1 Duck Club 12W-20-7N Production – Job Chart with Events9

 3.2 Duck Club 12W-20-7N Production – Job Chart without Events.....10

1.0 Cementing Job Summary

1.1 Executive Summary

Halliburton appreciates the opportunity to perform the cementing services on the **Duck Club 12W-20-7N** cement **Production** casing job. A pre-job safety meeting was held before the job where details of the job were discussed, potential safety hazards were reviewed, and environmental compliance procedures were outlined.

Approximately 35 bbls of cement were returned to surface.

Halliburton maintains a continuous quality improvement process and appreciates any comments or suggestions that you may have. Halliburton again thanks you for the opportunity to perform service work on this well. We hope to be your solutions provider for future projects.

Respectfully,

Halliburton Fort Lupton

HALLIBURTON

Cementing Job Summary

The Road to Excellence Starts with Safety

Sold To #: 369404	Ship To #: 3894420	Quote #:	Sales Order #: 0905327491							
Customer: EXTRACTION OIL & GAS-EBUS		Customer Rep: DANNY								
Well Name: DUCK CLUB	Well #: 12W-20-7N	API/UWI #: 05-001-10167-00								
Field: WATTENBERG	City (SAP): BARR LAKE	County/Parish: ADAMS	State: COLORADO							
Legal Description: NW SW-12-1S-66W-2436FSL-687FWL										
Contractor: PATTERSON-UTI ENERGY		Rig/Platform Name/Num: PATTERSON 901								
Job BOM: 7523 7523										
Well Type: HORIZONTAL OIL										
Sales Person: HALAMERICA\HX38199		Srv Supervisor: Lance Carpenter								
Job										
Formation Name										
Formation Depth (MD)	Top	Bottom								
Form Type	BHST									
Job depth MD	17700ft	Job Depth TVD	7465							
Water Depth		Wk Ht Above Floor	4							
Perforation Depth (MD)	From	To								
Well Data										
Description	New / Used	Size in	ID in	Weight lbm/ft	Thread	Grade	Top MD ft	Bottom MD ft	Top TVD ft	Bottom TVD ft
Casing		9.625	8.921	36			0	1593		1593
Casing		5.5	4.778	20			0	17687		7465
Open Hole Section			8.5				1614	17700		7465
Tools and Accessories										
Type	Size in	Qty	Make	Depth ft		Type	Size in	Qty	Make	
Guide Shoe	5.5			17687		Top Plug	5.5	1	HES	
Float Shoe	5.5					Bottom Plug	5.5		HES	
Float Collar	5.5			17679		SSR plug set	5.5		HES	
Insert Float	5.5					Plug Container	5.5	1	HES	
Stage Tool	5.5					Centralizers	5.5		HES	
Fluid Data										
Stage/Plug #: 1										
Fluid #	Stage Type	Fluid Name	Qty	Qty UoM	Mixing Density lbm/gal	Yield ft ³ /sack	Mix Fluid Gal	Rate bbl/min	Total Mix Fluid Gal	
1	11.5 lb/gal Tuned Spacer III	Tuned Spacer III	50	bbl	11.5	3.73		6		
Fluid #	Stage Type	Fluid Name	Qty	Qty UoM	Mixing Density lbm/gal	Yield ft ³ /sack	Mix Fluid Gal	Rate bbl/min	Total Mix Fluid Gal	
2	ElastiCem	ELASTICEM (TM) SYSTEM	582	sack	13.2	1.57		8	7.66	

last updated on 12/10/2018 2:45:10 PM

Page 1 of 3

HALLIBURTON

Cementing Job Summary

Fluid #	Stage Type	Fluid Name	Qty	Qty UoM	Mixing Density lbm/gal	Yield ft3/sack	Mix Fluid Gal	Rate bbl/min	Total Mix Fluid Gal
3	GasStop	ELASTICEM (TM) SYSTEM	615	sack	13.2	1.56		8	7.61
Fluid #	Stage Type	Fluid Name	Qty	Qty UoM	Mixing Density lbm/gal	Yield ft3/sack	Mix Fluid Gal	Rate bbl/min	Total Mix Fluid Gal
4	ElastiCem	ELASTICEM (TM) SYSTEM	1605	sack	13.2	1.57		8	7.66
Fluid #	Stage Type	Fluid Name	Qty	Qty UoM	Mixing Density lbm/gal	Yield ft3/sack	Mix Fluid Gal	Rate bbl/min	Total Mix Fluid Gal
5	MMCR Displacement	MMCR Displacement	10	bbl	8.33			8	
0.50 gal/bbl		MICRO MATRIX CEMENT RETARDER, 1 GAL PAIL (100003780)							
Fluid #	Stage Type	Fluid Name	Qty	Qty UoM	Mixing Density lbm/gal	Yield ft3/sack	Mix Fluid Gal	Rate bbl/min	Total Mix Fluid Gal
6	Displacement	Displacement	392	bbl	8.33			8	
Cement Left In Pipe		Amount	ft			Reason			Shoe Joint
Mix Water:		pH 7	Mix Water Chloride: 100 ppm			Mix Water Temperature:			68 °F
Cement Temperature:		30 °F	Plug Displaced by: 8.34 lb/gal			Disp. Temperature:			54 °F
Plug Bumped?		Yes	Bump Pressure: 2200 psi MPa			Floats Held?			Yes
Cement Returns:		35 bbl	Returns Density: 13.2 lb/gal			Returns Temperature:			## °F °C
Comment JOB WENT WELL WITH GOOD RETURNS THROUGHOUT. NO NOTICABLE PRESSURE WHEN BOTTOM PLUG WENT THROUGH SUB. DISPLACEMENT PRESSURES WERE GOOD. CAUGHT PRESSURE AT 53 AWAY. ALL 50 BBL SPACER RETURNS. 35 BBLS CEMENT TO SURFACE. FINAL CIRCULATING PRESSURE 2200. 3.5 BBL BACK AND FLOATS HELD. DISC RUPTURED AT 2650 AND PUMPED 5 BBLS AFTER. FLOATS HELD 3 BBL BACK.									

2.0 Real-Time Job Summary

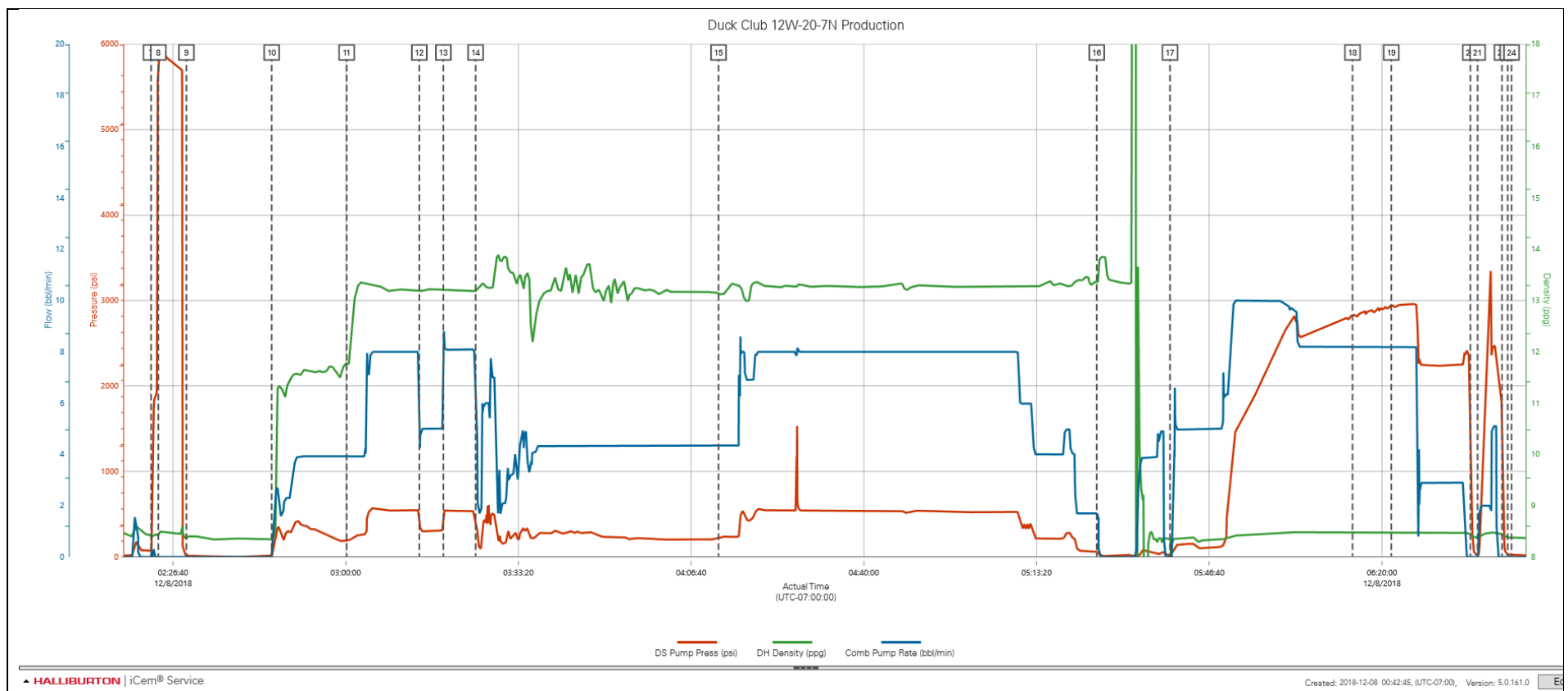
2.1 Job Event Log

Type	Seq. No.	Activity	Graph Label	Date	Time	Source	DS Pump Press (psi)	DH Density (ppg)	Comb Pump Rate (bbl/min)	Comments
Event	1	Call Out	Call Out	12/7/2018	17:00:00	USER				CREW CALLED OUT FOR JOB. ON LOCATION TIME 2300
Event	2	Depart Yard Safety Meeting	Depart Yard Safety Meeting	12/7/2018	19:00:00	USER				CREW HAS PRE CONVOY SAFETY MEETING DISCUSSING ROUTES, CONVOY ORDER, FOLLOWING DISTANCES AND HAZARDS
Event	3	Depart Shop for Location	Depart Shop for Location	12/7/2018	19:15:00	USER				CREW DEPARTS FOR LOCATION
Event	4	Arrive At Loc	Arrive At Loc	12/7/2018	20:00:00	USER				CREW ARRIVES AT LOCATION. CHECKS CEMENT, WATER AND EQUIPMENT SPOTING. RIG RUNNING CASING, 2000' FROM BOTTOM.
Event	5	Pre-Job Safety Meeting	Pre-Job Safety Meeting	12/8/2018	02:00:00	USER	0.00	8.30	0.10	
Event	6	Bump Plug	Comment	12/8/2018	02:14:36	USER	0.00	8.26	0.10	FILL LINES. LEAK IN ONE OF THE LINES. BLED PSI AND TIGHTENED
Event	7	Start Job	Start Job	12/8/2018	02:22:26	COM6	74.00	8.40	0.00	
Event	8	Pressure Test	Pressure Test	12/8/2018	02:23:50	USER	5750.00	8.49	0.00	PRESSURE TEST TO 6000 PSI.
Event	9	Other	Other	12/8/2018	02:29:15	USER	20.00	8.43	0.00	FINISH ADDING WATER TO LATEX WATER AND WEIGHING UP SPACER AFTER
Event	10	Pump Spacer	Pump Spacer	12/8/2018	02:45:42	USER	14.00	8.34	0.00	PUMP SPACER 4 BBL/MIN 50 BBLS 11.5# 3.73 YIELD 23.4 GAL
Event	11	Pump Cap Cement	Pump Cap Cement	12/8/2018	03:00:10	USER	202.00	11.78	3.90	PUMP CAP CEMENT 8 BBL/MIN 13.2# 1.57 YIELD 7.66 GAL 582 SKS
Event	12	Other	Other	12/8/2018	03:14:12	USER	429.00	13.19	6.60	SLOWED RATE TO 5 BBL/MIN 10 BBL BEFORE PLUG PASSES THROUGH SUB
Event	13	Other	Other	12/8/2018	03:18:50	USER	308.00	13.20	5.50	PLUG HAS PASSED THROUGH SUB SO PICKED RATE BACK UP TO 8 BBL/MIN

Event	14	Pump Lead Cement	Pump Lead Cement	12/8/2018	03:25:04	USER	327.00	13.19	6.00	PUMP LATEX LEAD CEMENT 172 BBL 13.2# 1.57 YIELD 7.61 GAL 615 SACKS AT 4 BBL/MIN
Event	15	Pump Tail Cement	Pump Tail Cement	12/8/2018	04:11:57	USER	220.00	13.12	4.30	PUMP TAIL CEMENT 448 BBL 13.2# 1.57 YIELD 7.66 GAL 1605 SACKS. SLOW THE FIRST 20 BBL AS BOTTOM PLUG LANDED THEN CONTINUED AT 8 BBL/MIN
Event	16	Shutdown	Shutdown	12/8/2018	05:24:56	USER	62.00	13.36	1.70	SHUTDOWN. LINES UP VALVES TO BLOW DOWN HES LINES. WASHUP PUMP TO THE PIT
Event	17	Pump Displacement	Pump Displacement	12/8/2018	05:39:05	USER	11.00	8.35	0.00	PUMP 372 BBL WATER DISPLACEMENT 8.34# AVERAGE 6 BBL/MIN. MMCR IN FIRST 10 BBL.
Event	18	Other	Other	12/8/2018	06:14:19	USER	2835.00	8.48	8.20	SPACER RETURNS TO SURFACE. ALL 50 BBL SPACER BACK
Event	19	Other	Other	12/8/2018	06:21:48	USER	2917.00	8.49	8.20	CEMENT RETURNS TO SURFACE. 35 BBL GOOD CEMENT BACK
Event	20	Bump Plug	Bump Plug	12/8/2018	06:37:03	USER	1898.00	8.45	0.00	BUMP PLUG. FINAL CIRCULATING PRESSURE 2200 PSI. CHECK FLOATS, 3.5 BBL BACK. FLOATS HELD
Event	21	Other	Other	12/8/2018	06:38:27	USER	22.00	8.38	0.00	PRESSURE UP TO RUPTURE DISC. DISC RUPTURED AT 2650 PSI. PUMPED 5 BBL WATER FOR WET SHOE
Event	22	Other	Other	12/8/2018	06:43:10	USER	1621.00	8.44	0.00	CHECK FLOATS. GOT 3 BBL BACK. FLOATS HELD
Event	23	End Job	End Job	12/8/2018	06:44:15	COM6	26.00	8.38	0.00	CREW, RIG CREW AND COMPANY REP HAVE PRE JOB SAFETY MEETING DISCUSSING JOB PROCEEDURES, CONTINGENSIES, ROLES AND HAZARDS
Event	24	Post-Job Safety Meeting (Pre Rig-Down)	Post-Job Safety Meeting (Pre Rig-Down)	12/8/2018	06:45:00	USER	21.00	8.38	0.00	CREW HAS PRE RIG DOWN SAFETY MEETING AND BEGINS RIGGING DOWN EQUIPMENT
Event	25	Depart Location Safety Meeting	Depart Location Safety Meeting	12/8/2018	08:50:00	USER				CREW HAS JOURNEY MANAGEMENT SAFETY MEETING DISCUSSING ROUTE, CONVOY ORDER, HAZARDS
Event	26	Depart Location	Depart Location	12/8/2018	09:00:00	USER				DEPART LOCATION

3.0 Attachments

3.1 Duck Club 12W-20-7N Production – Job Chart with Events



3.2 Duck Club 12W-20-7N Production – Job Chart without Events

