

Inspection Photos

2/08/2019

Operator: NOBLE ENERGY INC - 100322

Location ID: 421826

Inspection Doc. Number: 682504498

Weld County, CO

Aaron Trujillo
NE Reclamation Specialist
COGCC



Photo 1: Photo taken from the south end of the location, facing east. Photos 1-4 provide an overview of the location from east, northeast, northwest to west.



Photo 2: See comments under photo 1.



Photo 3: See comments under photo 1.

Inspection Photos
Operator: NOBLE ENERGY INC - 100322
Location ID: 421826



Photo 4: See comments under photo 1.



Photo 5: Photo taken from the east end of the location, facing north. Photo shows eastern perimeter of the location and equipment.



Photo 6: Photo taken from the northeast corner of the location, facing west. Photo shows interim and production areas.

Inspection Photos
Operator: NOBLE ENERGY INC - 100322
Location ID: 421826



Photo 7: Photo taken from the northeast corner of the location, facing south. Photo shows interim and production areas.



Photo 8: Photo taken from the north end of the location, facing southeast. Photo shows interim and production areas.



Photo 9: Photo taken from the north end of the location, facing south. Photo shows interim and production areas.



Photo 10: Photo taken from the south end of the location. Photo shows operator appears to have constructed an additional road through the location traveling west. This is being documented for future reclamation as road is not pre-existing, and not on the location drawing or access road map documents submitted by operator with the 2A.

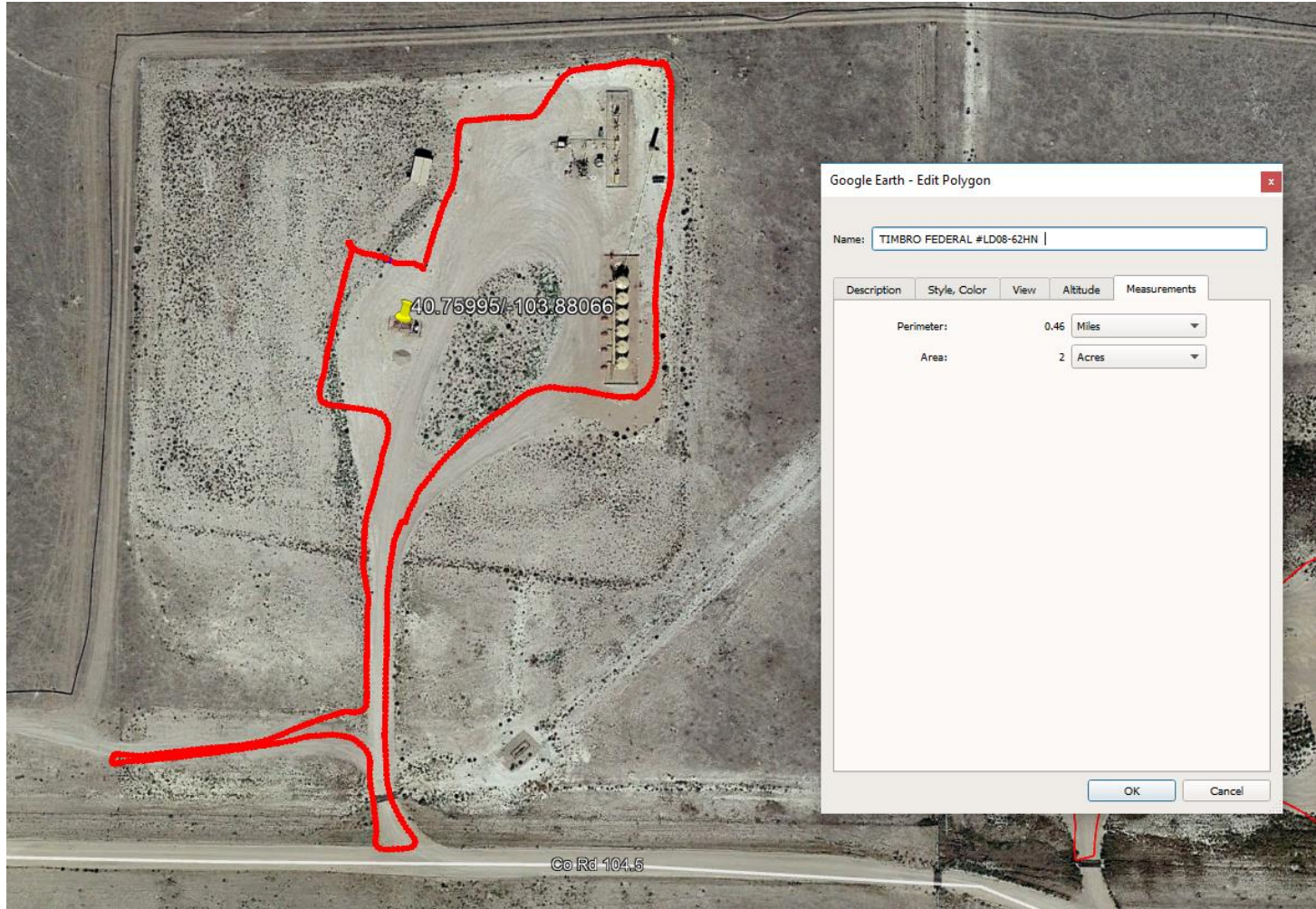


Photo 11: 2013 (most current available) Google Earth aerial image. Inspector mapped a disturbance area of 2 acres via a Trimble GPS unit. This does not appear to be in compliance with the approved Form 2A for the permitted disturbance area post interim reclamation (1.64 acres).