

SRC ENERGY

**WELD COUNTY (NAD83, TRUE NORTH)
6N-66W-06 GOLDEN EAGLE 1-6 PAD
GOLDEN EAGLE 25N-1B-M**

Wellbore #1

Plan: Design #1

Standard Planning Report

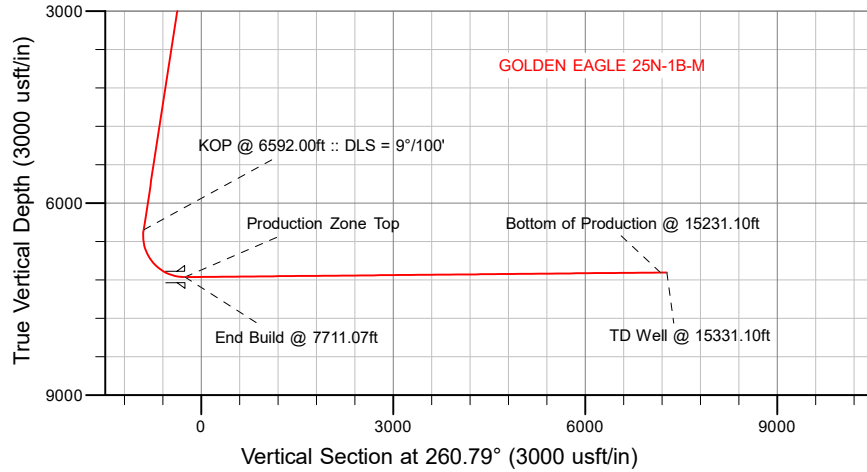
13 December, 2018

Project: WELD COUNTY (NAD83, TRUE NORTH)
Site: 6N-66W-06 GOLDEN EAGLE 1-6 PAD
Well: GOLDEN EAGLE 25N-1B-M
Wellbore: Wellbore #1
Design: Design #1

SRC ENERGY

CASING DETAILS

TVD	MD	Name
1800.00	1833.25	9 5/8"
7157.00	7711.07	Production Zone Top



SECTION DETAILS

Sec	MD	Inc	Azi	TVD	+N/-S	+E/-W	Dleg	TFace	VSec	Target
1	0.00	0.00	0.00	0.00	0.00	0.00	0.00	0.00	0.00	
2	240.00	0.00	0.00	240.00	0.00	0.00	0.00	0.00	0.00	
3	937.00	13.94	132.40	930.14	-56.89	62.31	2.00	132.40	-52.40	
4	6592.00	13.94	132.40	6418.60	-975.51	1068.32	0.00	0.00	-898.50	
5	7711.07	90.55	269.56	7157.00	-1106.17	436.68	9.00	136.22	-254.09	
6	15231.10	90.55	269.56	7085.00	-1163.30	-7082.80	0.00	0.00	7177.68	GOLDEN EAGLE 25N-1B-M_BPZ
7	15331.10	90.55	269.56	7084.04	-1164.06	-7182.79	0.00	0.00	7276.50	

WELLBORE TARGET DETAILS (LAT/LONG)

Name	TVD	+N/-S	+E/-W	Latitude	Longitude
GOLDEN EAGLE 25N-1B-M_SHL	0.00	0.00	0.00	40.520283	-104.814574
GOLDEN EAGLE 25N-1B-M_BPZ	7085.00	-1163.30	-7082.80	40.517087	-104.840049
GOLDEN EAGLE 25N-1B-M_BHL	7084.04	-1164.06	-7182.79	40.517085	-104.840409

SHL
1219' FNL
498' FEL

LP
2331' FNL
150' FEL
40.517247° Lat
-104.813000° Long

BPZ
2312' FNL
2169' FEL

BHL
2312' FNL
2269' FEL

West(-)/East(+) (2200 usft/in)

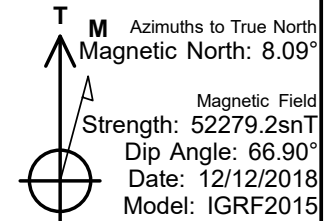
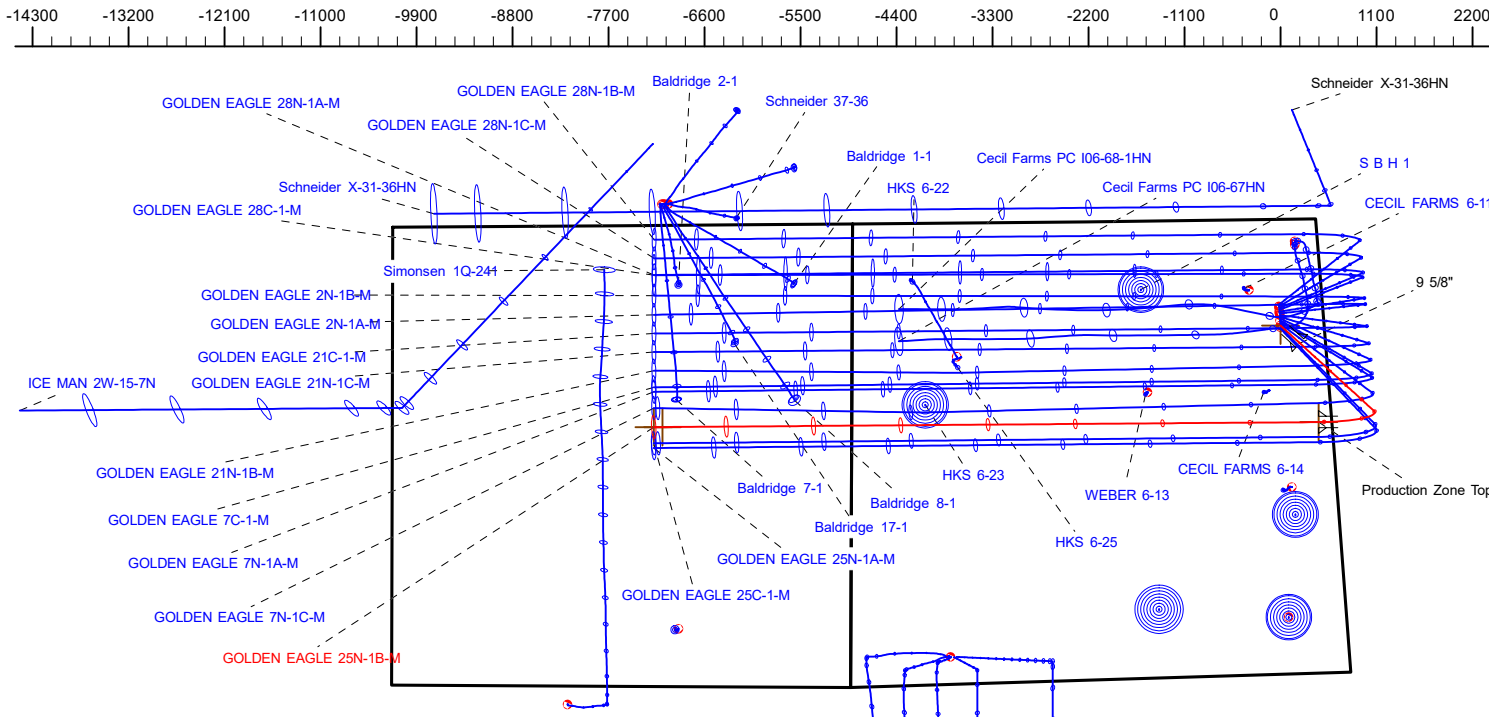
WELL DETAILS: GOLDEN EAGLE 25N-1B-M

GL = 4873'

RKB = 4' @ 4877.00usft (IKON 12)

Plan: Design #1 (GOLDEN EAGLE 25N-1B-M/Wellbore #1)

Date: 12/13/2018



Hewlett-Packard

Planning Report

Database:	EDM 5000.14 Single User Db	Local Co-ordinate Reference:	Well GOLDEN EAGLE 25N-1B-M
Company:	SRC ENERGY	TVD Reference:	RKB = 4' @ 4877.00usft (IKON 12)
Project:	WELD COUNTY (NAD83, TRUE NORTH)	MD Reference:	RKB = 4' @ 4877.00usft (IKON 12)
Site:	6N-66W-06 GOLDEN EAGLE 1-6 PAD	North Reference:	True
Well:	GOLDEN EAGLE 25N-1B-M	Survey Calculation Method:	Minimum Curvature
Wellbore:	Wellbore #1		
Design:	Design #1		

Project	WELD COUNTY (NAD83, TRUE NORTH)		
Map System:	US State Plane 1983	System Datum:	Mean Sea Level
Geo Datum:	North American Datum 1983		
Map Zone:	Colorado Northern Zone		

Site		6N-66W-06 GOLDEN EAGLE 1-6 PAD			
Site Position:		Northing:	1,433,355.39 usft	Latitude:	40.520940
From:	Lat/Long	Easting:	3,190,536.32 usft	Longitude:	-104.814644
Position Uncertainty:	0.00 usft	Slot Radius:	13-3/16 "	Grid Convergence:	0.44 °

Well	GOLDEN EAGLE 25N-1B-M					
Well Position	+N/-S	-239.36 usft	Northing:	1,433,116.19 usft	Latitude:	40.520283
	+E/-W	19.46 usft	Easting:	3,190,557.64 usft	Longitude:	-104.814574
Position Uncertainty		3.28 usft	Wellhead Elevation:		Ground Level:	4,873.00 usft

Wellbore	Wellbore #1				
Magnetics	Model Name	Sample Date	Declination (°)	Dip Angle (°)	Field Strength (nT)
	IGRF2015	12/12/2018	8.09	66.90	52,279.23077410

Design	Design #1				
Audit Notes:					
Version:		Phase:	PLAN	Tie On Depth:	0.00
Vertical Section:	Depth From (TVD) (usft)	+N/-S (usft)	+E/-W (usft)	Direction (°)	
	0.00	0.00	0.00	260.79	

Plan Survey Tool Program	Date	12/13/2018			
Depth From (usft)	Depth To (usft)	Survey (Wellbore)	Tool Name	Remarks	
1	0.00	1,800.00	Design #1 (Wellbore #1)	SRC Energy_ISCWSA REV 2	
				Fixed:v2:crustal field declinatio	
2	1,800.00	15,331.10	Design #1 (Wellbore #1)	SRC Energy_ISCWSA REV 2	
				Fixed:v2:Rockies, crustal dec +	

Hewlett-Packard
Planning Report

Database:	EDM 5000.14 Single User Db	Local Co-ordinate Reference:	Well GOLDEN EAGLE 25N-1B-M
Company:	SRC ENERGY	TVD Reference:	RKB = 4' @ 4877.00usft (IKON 12)
Project:	WELD COUNTY (NAD83, TRUE NORTH)	MD Reference:	RKB = 4' @ 4877.00usft (IKON 12)
Site:	6N-66W-06 GOLDEN EAGLE 1-6 PAD	North Reference:	True
Well:	GOLDEN EAGLE 25N-1B-M	Survey Calculation Method:	Minimum Curvature
Wellbore:	Wellbore #1		
Design:	Design #1		

Plan Sections										
Measured Depth (usft)	Inclination (°)	Azimuth (°)	Vertical Depth (usft)	+N/-S (usft)	+E/-W (usft)	Dogleg Rate (°/100usft)	Build Rate (°/100usft)	Turn Rate (°/100usft)	TFO (°)	Target
0.00	0.00	0.00	0.00	0.00	0.00	0.00	0.00	0.00	0.00	
240.00	0.00	0.00	240.00	0.00	0.00	0.00	0.00	0.00	0.00	
937.00	13.94	132.40	930.14	-56.89	62.31	2.00	2.00	0.00	132.40	
6,592.00	13.94	132.40	6,418.60	-975.51	1,068.32	0.00	0.00	0.00	0.00	
7,711.07	90.55	269.56	7,157.00	-1,106.17	436.68	9.00	6.85	12.26	136.22	
15,231.10	90.55	269.56	7,085.00	-1,163.30	-7,082.80	0.00	0.00	0.00	0.00	GOLDEN EAGLE 25N
15,331.10	90.55	269.56	7,084.04	-1,164.06	-7,182.79	0.00	0.00	0.00	0.00	

Hewlett-Packard

Planning Report

Database:	EDM 5000.14 Single User Db	Local Co-ordinate Reference:	Well GOLDEN EAGLE 25N-1B-M
Company:	SRC ENERGY	TVD Reference:	RKB = 4' @ 4877.00usft (IKON 12)
Project:	WELD COUNTY (NAD83, TRUE NORTH)	MD Reference:	RKB = 4' @ 4877.00usft (IKON 12)
Site:	6N-66W-06 GOLDEN EAGLE 1-6 PAD	North Reference:	True
Well:	GOLDEN EAGLE 25N-1B-M	Survey Calculation Method:	Minimum Curvature
Wellbore:	Wellbore #1		
Design:	Design #1		

Planned Survey									
Measured Depth (usft)	Inclination (°)	Azimuth (°)	Vertical Depth (usft)	+N/-S (usft)	+E/-W (usft)	Vertical Section (usft)	Dogleg Rate (°/100usft)	Build Rate (°/100usft)	Turn Rate (°/100usft)
0.00	0.00	0.00	0.00	0.00	0.00	0.00	0.00	0.00	0.00
100.00	0.00	0.00	100.00	0.00	0.00	0.00	0.00	0.00	0.00
200.00	0.00	0.00	200.00	0.00	0.00	0.00	0.00	0.00	0.00
240.00	0.00	0.00	240.00	0.00	0.00	0.00	0.00	0.00	0.00
Begin Nudge @ 240.00ft									
300.00	1.20	132.40	300.00	-0.42	0.46	-0.39	2.00	2.00	0.00
400.00	3.20	132.40	399.92	-3.01	3.30	-2.77	2.00	2.00	0.00
500.00	5.20	132.40	499.64	-7.95	8.71	-7.32	2.00	2.00	0.00
600.00	7.20	132.40	599.05	-15.23	16.68	-14.03	2.00	2.00	0.00
700.00	9.20	132.40	698.03	-24.85	27.21	-22.89	2.00	2.00	0.00
800.00	11.20	132.40	796.44	-36.79	40.29	-33.89	2.00	2.00	0.00
900.00	13.20	132.40	894.18	-51.04	55.89	-47.01	2.00	2.00	0.00
937.00	13.94	132.40	930.14	-56.89	62.31	-52.40	2.00	2.00	0.00
Hold Tangent @ 937.00ft									
1,000.00	13.94	132.40	991.29	-67.13	73.51	-61.83	0.00	0.00	0.00
1,100.00	13.94	132.40	1,088.34	-83.37	91.30	-76.79	0.00	0.00	0.00
1,200.00	13.94	132.40	1,185.40	-99.61	109.09	-91.75	0.00	0.00	0.00
1,300.00	13.94	132.40	1,282.45	-115.86	126.88	-106.71	0.00	0.00	0.00
1,400.00	13.94	132.40	1,379.51	-132.10	144.67	-121.68	0.00	0.00	0.00
1,500.00	13.94	132.40	1,476.56	-148.35	162.46	-136.64	0.00	0.00	0.00
1,600.00	13.94	132.40	1,573.62	-164.59	180.25	-151.60	0.00	0.00	0.00
1,700.00	13.94	132.40	1,670.67	-180.84	198.04	-166.56	0.00	0.00	0.00
1,800.00	13.94	132.40	1,767.73	-197.08	215.83	-181.52	0.00	0.00	0.00
1,833.25	13.94	132.40	1,800.00	-202.48	221.75	-186.50	0.00	0.00	0.00
9 5/8"									
1,900.00	13.94	132.40	1,864.78	-213.33	233.62	-196.49	0.00	0.00	0.00
2,000.00	13.94	132.40	1,961.84	-229.57	251.41	-211.45	0.00	0.00	0.00
2,100.00	13.94	132.40	2,058.89	-245.81	269.20	-226.41	0.00	0.00	0.00
2,200.00	13.94	132.40	2,155.95	-262.06	286.99	-241.37	0.00	0.00	0.00
2,300.00	13.94	132.40	2,253.00	-278.30	304.78	-256.33	0.00	0.00	0.00
2,400.00	13.94	132.40	2,350.06	-294.55	322.57	-271.30	0.00	0.00	0.00
2,500.00	13.94	132.40	2,447.11	-310.79	340.36	-286.26	0.00	0.00	0.00
2,600.00	13.94	132.40	2,544.17	-327.04	358.15	-301.22	0.00	0.00	0.00
2,700.00	13.94	132.40	2,641.22	-343.28	375.94	-316.18	0.00	0.00	0.00
2,800.00	13.94	132.40	2,738.28	-359.52	393.73	-331.14	0.00	0.00	0.00
2,900.00	13.94	132.40	2,835.33	-375.77	411.52	-346.11	0.00	0.00	0.00
3,000.00	13.94	132.40	2,932.39	-392.01	429.31	-361.07	0.00	0.00	0.00
3,100.00	13.94	132.40	3,029.44	-408.26	447.10	-376.03	0.00	0.00	0.00
3,200.00	13.94	132.40	3,126.50	-424.50	464.89	-390.99	0.00	0.00	0.00
3,300.00	13.94	132.40	3,223.55	-440.75	482.68	-405.95	0.00	0.00	0.00
3,400.00	13.94	132.40	3,320.61	-456.99	500.47	-420.92	0.00	0.00	0.00
3,500.00	13.94	132.40	3,417.66	-473.23	518.26	-435.88	0.00	0.00	0.00
3,600.00	13.94	132.40	3,514.71	-489.48	536.05	-450.84	0.00	0.00	0.00
3,700.00	13.94	132.40	3,611.77	-505.72	553.84	-465.80	0.00	0.00	0.00
3,800.00	13.94	132.40	3,708.82	-521.97	571.63	-480.76	0.00	0.00	0.00
3,900.00	13.94	132.40	3,805.88	-538.21	589.42	-495.73	0.00	0.00	0.00
4,000.00	13.94	132.40	3,902.93	-554.46	607.21	-510.69	0.00	0.00	0.00
4,100.00	13.94	132.40	3,999.99	-570.70	625.00	-525.65	0.00	0.00	0.00
4,200.00	13.94	132.40	4,097.04	-586.94	642.79	-540.61	0.00	0.00	0.00
4,300.00	13.94	132.40	4,194.10	-603.19	660.58	-555.57	0.00	0.00	0.00
4,400.00	13.94	132.40	4,291.15	-619.43	678.37	-570.54	0.00	0.00	0.00
4,500.00	13.94	132.40	4,388.21	-635.68	696.16	-585.50	0.00	0.00	0.00
4,600.00	13.94	132.40	4,485.26	-651.92	713.95	-600.46	0.00	0.00	0.00

Hewlett-Packard

Planning Report

Database:	EDM 5000.14 Single User Db	Local Co-ordinate Reference:	Well GOLDEN EAGLE 25N-1B-M
Company:	SRC ENERGY	TVD Reference:	RKB = 4' @ 4877.00usft (IKON 12)
Project:	WELD COUNTY (NAD83, TRUE NORTH)	MD Reference:	RKB = 4' @ 4877.00usft (IKON 12)
Site:	6N-66W-06 GOLDEN EAGLE 1-6 PAD	North Reference:	True
Well:	GOLDEN EAGLE 25N-1B-M	Survey Calculation Method:	Minimum Curvature
Wellbore:	Wellbore #1		
Design:	Design #1		

Planned Survey									
Measured Depth (usft)	Inclination (°)	Azimuth (°)	Vertical Depth (usft)	+N/-S (usft)	+E/-W (usft)	Vertical Section (usft)	Dogleg Rate (°/100usft)	Build Rate (°/100usft)	Turn Rate (°/100usft)
4,700.00	13.94	132.40	4,582.32	-668.17	731.74	-615.42	0.00	0.00	0.00
4,800.00	13.94	132.40	4,679.37	-684.41	749.53	-630.38	0.00	0.00	0.00
4,900.00	13.94	132.40	4,776.43	-700.66	767.32	-645.35	0.00	0.00	0.00
5,000.00	13.94	132.40	4,873.48	-716.90	785.11	-660.31	0.00	0.00	0.00
5,100.00	13.94	132.40	4,970.54	-733.14	802.89	-675.27	0.00	0.00	0.00
5,200.00	13.94	132.40	5,067.59	-749.39	820.68	-690.23	0.00	0.00	0.00
5,300.00	13.94	132.40	5,164.65	-765.63	838.47	-705.19	0.00	0.00	0.00
5,400.00	13.94	132.40	5,261.70	-781.88	856.26	-720.16	0.00	0.00	0.00
5,500.00	13.94	132.40	5,358.76	-798.12	874.05	-735.12	0.00	0.00	0.00
5,600.00	13.94	132.40	5,455.81	-814.37	891.84	-750.08	0.00	0.00	0.00
5,700.00	13.94	132.40	5,552.87	-830.61	909.63	-765.04	0.00	0.00	0.00
5,800.00	13.94	132.40	5,649.92	-846.85	927.42	-780.00	0.00	0.00	0.00
5,900.00	13.94	132.40	5,746.98	-863.10	945.21	-794.97	0.00	0.00	0.00
6,000.00	13.94	132.40	5,844.03	-879.34	963.00	-809.93	0.00	0.00	0.00
6,100.00	13.94	132.40	5,941.09	-895.59	980.79	-824.89	0.00	0.00	0.00
6,200.00	13.94	132.40	6,038.14	-911.83	998.58	-839.85	0.00	0.00	0.00
6,300.00	13.94	132.40	6,135.20	-928.08	1,016.37	-854.81	0.00	0.00	0.00
6,400.00	13.94	132.40	6,232.25	-944.32	1,034.16	-869.78	0.00	0.00	0.00
6,500.00	13.94	132.40	6,329.31	-960.56	1,051.95	-884.74	0.00	0.00	0.00
6,592.00	13.94	132.40	6,418.60	-975.51	1,068.32	-898.50	0.00	0.00	0.00
KOP @ 6592.00ft :: DLS = 9°/100'									
6,600.00	13.43	134.55	6,426.37	-976.81	1,069.69	-899.65	9.00	-6.38	26.82
6,700.00	9.61	176.84	6,524.50	-993.32	1,078.45	-905.65	9.00	-3.82	42.29
6,800.00	12.83	221.55	6,622.76	-1,010.00	1,071.53	-896.15	9.00	3.23	44.72
6,900.00	19.94	241.69	6,718.71	-1,026.42	1,049.10	-871.39	9.00	7.11	20.14
7,000.00	28.12	251.03	6,810.00	-1,042.20	1,011.73	-831.97	9.00	8.18	9.34
7,100.00	36.67	256.35	6,894.37	-1,056.94	960.32	-778.87	9.00	8.55	5.32
7,200.00	45.37	259.86	6,969.76	-1,070.28	896.15	-713.39	9.00	8.70	3.52
7,300.00	54.15	262.46	7,034.30	-1,081.88	820.79	-637.14	9.00	8.78	2.59
7,400.00	62.98	264.53	7,086.41	-1,091.47	736.10	-552.01	9.00	8.83	2.07
7,500.00	71.83	266.29	7,124.80	-1,098.81	644.17	-460.09	9.00	8.85	1.77
7,600.00	80.69	267.88	7,148.53	-1,103.72	547.25	-363.64	9.00	8.87	1.59
7,700.00	89.57	269.40	7,157.02	-1,106.07	447.74	-265.03	9.00	8.87	1.51
7,711.07	90.55	269.56	7,157.00	-1,106.17	436.68	-254.09	9.00	8.87	1.50
End Build @ 7711.07ft - Production Zone Top									
7,800.00	90.55	269.56	7,156.15	-1,106.84	347.75	-166.21	0.00	0.00	0.00
7,900.00	90.55	269.56	7,155.19	-1,107.60	247.76	-67.38	0.00	0.00	0.00
8,000.00	90.55	269.56	7,154.24	-1,108.36	147.77	31.45	0.00	0.00	0.00
8,100.00	90.55	269.56	7,153.28	-1,109.12	47.77	130.27	0.00	0.00	0.00
8,200.00	90.55	269.56	7,152.32	-1,109.88	-52.22	229.10	0.00	0.00	0.00
8,300.00	90.55	269.56	7,151.36	-1,110.64	-152.21	327.93	0.00	0.00	0.00
8,400.00	90.55	269.56	7,150.41	-1,111.40	-252.20	426.75	0.00	0.00	0.00
8,500.00	90.55	269.56	7,149.45	-1,112.16	-352.20	525.58	0.00	0.00	0.00
8,600.00	90.55	269.56	7,148.49	-1,112.92	-452.19	624.40	0.00	0.00	0.00
8,700.00	90.55	269.56	7,147.54	-1,113.68	-552.18	723.23	0.00	0.00	0.00
8,800.00	90.55	269.56	7,146.58	-1,114.44	-652.17	822.06	0.00	0.00	0.00
8,900.00	90.55	269.56	7,145.62	-1,115.20	-752.17	920.88	0.00	0.00	0.00
9,000.00	90.55	269.56	7,144.66	-1,115.96	-852.16	1,019.71	0.00	0.00	0.00
9,100.00	90.55	269.56	7,143.71	-1,116.72	-952.15	1,118.54	0.00	0.00	0.00
9,200.00	90.55	269.56	7,142.75	-1,117.48	-1,052.14	1,217.36	0.00	0.00	0.00
9,300.00	90.55	269.56	7,141.79	-1,118.24	-1,152.14	1,316.19	0.00	0.00	0.00
9,400.00	90.55	269.56	7,140.83	-1,119.00	-1,252.13	1,415.01	0.00	0.00	0.00
9,500.00	90.55	269.56	7,139.88	-1,119.76	-1,352.12	1,513.84	0.00	0.00	0.00
9,600.00	90.55	269.56	7,138.92	-1,120.52	-1,452.11	1,612.67	0.00	0.00	0.00

Hewlett-Packard

Planning Report

Database:	EDM 5000.14 Single User Db	Local Co-ordinate Reference:	Well GOLDEN EAGLE 25N-1B-M
Company:	SRC ENERGY	TVD Reference:	RKB = 4' @ 4877.00usft (IKON 12)
Project:	WELD COUNTY (NAD83, TRUE NORTH)	MD Reference:	RKB = 4' @ 4877.00usft (IKON 12)
Site:	6N-66W-06 GOLDEN EAGLE 1-6 PAD	North Reference:	True
Well:	GOLDEN EAGLE 25N-1B-M	Survey Calculation Method:	Minimum Curvature
Wellbore:	Wellbore #1		
Design:	Design #1		

Planned Survey										
Measured Depth (usft)	Inclination (°)	Azimuth (°)	Vertical Depth (usft)	+N/-S (usft)	+E/-W (usft)	Vertical Section (usft)	Dogleg Rate (°/100usft)	Build Rate (°/100usft)	Turn Rate (°/100usft)	
9,700.00	90.55	269.56	7,137.96	-1,121.28	-1,552.11	1,711.49	0.00	0.00	0.00	
9,800.00	90.55	269.56	7,137.00	-1,122.04	-1,652.10	1,810.32	0.00	0.00	0.00	
9,900.00	90.55	269.56	7,136.05	-1,122.80	-1,752.09	1,909.15	0.00	0.00	0.00	
10,000.00	90.55	269.56	7,135.09	-1,123.56	-1,852.08	2,007.97	0.00	0.00	0.00	
10,100.00	90.55	269.56	7,134.13	-1,124.32	-1,952.08	2,106.80	0.00	0.00	0.00	
10,200.00	90.55	269.56	7,133.17	-1,125.08	-2,052.07	2,205.62	0.00	0.00	0.00	
10,300.00	90.55	269.56	7,132.22	-1,125.84	-2,152.06	2,304.45	0.00	0.00	0.00	
10,400.00	90.55	269.56	7,131.26	-1,126.60	-2,252.05	2,403.28	0.00	0.00	0.00	
10,500.00	90.55	269.56	7,130.30	-1,127.36	-2,352.05	2,502.10	0.00	0.00	0.00	
10,600.00	90.55	269.56	7,129.34	-1,128.12	-2,452.04	2,600.93	0.00	0.00	0.00	
10,700.00	90.55	269.56	7,128.39	-1,128.88	-2,552.03	2,699.76	0.00	0.00	0.00	
10,800.00	90.55	269.56	7,127.43	-1,129.64	-2,652.02	2,798.58	0.00	0.00	0.00	
10,900.00	90.55	269.56	7,126.47	-1,130.40	-2,752.02	2,897.41	0.00	0.00	0.00	
11,000.00	90.55	269.56	7,125.51	-1,131.15	-2,852.01	2,996.24	0.00	0.00	0.00	
11,100.00	90.55	269.56	7,124.56	-1,131.91	-2,952.00	3,095.06	0.00	0.00	0.00	
11,200.00	90.55	269.56	7,123.60	-1,132.67	-3,051.99	3,193.89	0.00	0.00	0.00	
11,300.00	90.55	269.56	7,122.64	-1,133.43	-3,151.99	3,292.71	0.00	0.00	0.00	
11,400.00	90.55	269.56	7,121.68	-1,134.19	-3,251.98	3,391.54	0.00	0.00	0.00	
11,500.00	90.55	269.56	7,120.73	-1,134.95	-3,351.97	3,490.37	0.00	0.00	0.00	
11,600.00	90.55	269.56	7,119.77	-1,135.71	-3,451.96	3,589.19	0.00	0.00	0.00	
11,700.00	90.55	269.56	7,118.81	-1,136.47	-3,551.96	3,688.02	0.00	0.00	0.00	
11,800.00	90.55	269.56	7,117.85	-1,137.23	-3,651.95	3,786.85	0.00	0.00	0.00	
11,900.00	90.55	269.56	7,116.90	-1,137.99	-3,751.94	3,885.67	0.00	0.00	0.00	
12,000.00	90.55	269.56	7,115.94	-1,138.75	-3,851.93	3,984.50	0.00	0.00	0.00	
12,100.00	90.55	269.56	7,114.98	-1,139.51	-3,951.93	4,083.32	0.00	0.00	0.00	
12,200.00	90.55	269.56	7,114.02	-1,140.27	-4,051.92	4,182.15	0.00	0.00	0.00	
12,300.00	90.55	269.56	7,113.07	-1,141.03	-4,151.91	4,280.98	0.00	0.00	0.00	
12,400.00	90.55	269.56	7,112.11	-1,141.79	-4,251.90	4,379.80	0.00	0.00	0.00	
12,500.00	90.55	269.56	7,111.15	-1,142.55	-4,351.90	4,478.63	0.00	0.00	0.00	
12,600.00	90.55	269.56	7,110.19	-1,143.31	-4,451.89	4,577.46	0.00	0.00	0.00	
12,700.00	90.55	269.56	7,109.24	-1,144.07	-4,551.88	4,676.28	0.00	0.00	0.00	
12,800.00	90.55	269.56	7,108.28	-1,144.83	-4,651.87	4,775.11	0.00	0.00	0.00	
12,900.00	90.55	269.56	7,107.32	-1,145.59	-4,751.87	4,873.93	0.00	0.00	0.00	
13,000.00	90.55	269.56	7,106.36	-1,146.35	-4,851.86	4,972.76	0.00	0.00	0.00	
13,100.00	90.55	269.56	7,105.41	-1,147.11	-4,951.85	5,071.59	0.00	0.00	0.00	
13,200.00	90.55	269.56	7,104.45	-1,147.87	-5,051.85	5,170.41	0.00	0.00	0.00	
13,300.00	90.55	269.56	7,103.49	-1,148.63	-5,151.84	5,269.24	0.00	0.00	0.00	
13,400.00	90.55	269.56	7,102.53	-1,149.39	-5,251.83	5,368.07	0.00	0.00	0.00	
13,500.00	90.55	269.56	7,101.58	-1,150.15	-5,351.82	5,466.89	0.00	0.00	0.00	
13,600.00	90.55	269.56	7,100.62	-1,150.91	-5,451.82	5,565.72	0.00	0.00	0.00	
13,700.00	90.55	269.56	7,099.66	-1,151.67	-5,551.81	5,664.54	0.00	0.00	0.00	
13,800.00	90.55	269.56	7,098.70	-1,152.43	-5,651.80	5,763.37	0.00	0.00	0.00	
13,900.00	90.55	269.56	7,097.75	-1,153.19	-5,751.79	5,862.20	0.00	0.00	0.00	
14,000.00	90.55	269.56	7,096.79	-1,153.95	-5,851.79	5,961.02	0.00	0.00	0.00	
14,100.00	90.55	269.56	7,095.83	-1,154.71	-5,951.78	6,059.85	0.00	0.00	0.00	
14,200.00	90.55	269.56	7,094.87	-1,155.47	-6,051.77	6,158.68	0.00	0.00	0.00	
14,300.00	90.55	269.56	7,093.92	-1,156.23	-6,151.76	6,257.50	0.00	0.00	0.00	
14,400.00	90.55	269.56	7,092.96	-1,156.99	-6,251.76	6,356.33	0.00	0.00	0.00	
14,500.00	90.55	269.56	7,092.00	-1,157.75	-6,351.75	6,455.15	0.00	0.00	0.00	
14,600.00	90.55	269.56	7,091.04	-1,158.51	-6,451.74	6,553.98	0.00	0.00	0.00	
14,700.00	90.55	269.56	7,090.09	-1,159.27	-6,551.73	6,652.81	0.00	0.00	0.00	
14,800.00	90.55	269.56	7,089.13	-1,160.02	-6,651.73	6,751.63	0.00	0.00	0.00	
14,900.00	90.55	269.56	7,088.17	-1,160.78	-6,751.72	6,850.46	0.00	0.00	0.00	
15,000.00	90.55	269.56	7,087.21	-1,161.54	-6,851.71	6,949.29	0.00	0.00	0.00	

Hewlett-Packard

Planning Report

Database:	EDM 5000.14 Single User Db	Local Co-ordinate Reference:	Well GOLDEN EAGLE 25N-1B-M
Company:	SRC ENERGY	TVD Reference:	RKB = 4' @ 4877.00usft (IKON 12)
Project:	WELD COUNTY (NAD83, TRUE NORTH)	MD Reference:	RKB = 4' @ 4877.00usft (IKON 12)
Site:	6N-66W-06 GOLDEN EAGLE 1-6 PAD	North Reference:	True
Well:	GOLDEN EAGLE 25N-1B-M	Survey Calculation Method:	Minimum Curvature
Wellbore:	Wellbore #1		
Design:	Design #1		

Planned Survey										
Measured Depth (usft)	Inclination (°)	Azimuth (°)	Vertical Depth (usft)	+N/-S (usft)	+E/-W (usft)	Vertical Section (usft)	Dogleg Rate (°/100usft)	Build Rate (°/100usft)	Turn Rate (°/100usft)	
15,100.00	90.55	269.56	7,086.26	-1,162.30	-6,951.70	7,048.11	0.00	0.00	0.00	
15,200.00	90.55	269.56	7,085.30	-1,163.06	-7,051.70	7,146.94	0.00	0.00	0.00	
15,231.10	90.55	269.56	7,085.00	-1,163.30	-7,082.80	7,177.68	0.00	0.00	0.00	
Bottom of Production @ 15231.10ft										
15,300.00	90.55	269.56	7,084.34	-1,163.82	-7,151.69	7,245.76	0.00	0.00	0.00	
15,331.10	90.55	269.56	7,084.04	-1,164.06	-7,182.79	7,276.50	0.00	0.00	0.00	
TD Well @ 15331.10ft										

Casing Points					
Measured Depth (usft)	Vertical Depth (usft)	Name		Casing Diameter (")	Hole Diameter (")
1,833.25	1,800.00	9 5/8"		9-5/8	13-1/2
7,711.07	7,157.00	Production Zone Top		5-1/2	8-1/2

Plan Annotations					
Measured Depth (usft)	Vertical Depth (usft)	Local Coordinates		Comment	
		+N/-S (usft)	+E/-W (usft)		
240.00	240.00	0.00	0.00	Begin Nudge @ 240.00ft	
937.00	930.14	-56.89	62.31	Hold Tangent @ 937.00ft	
6,592.00	6,418.60	-975.51	1,068.32	KOP @ 6592.00ft :: DLS = 9°/100'	
7,711.07	7,157.00	-1,106.17	436.68	End Build @ 7711.07ft	
15,231.10	7,085.00	-1,163.30	-7,082.80	Bottom of Production @ 15231.10ft	
15,331.10	7,084.04	-1,164.06	-7,182.79	TD Well @ 15331.10ft	