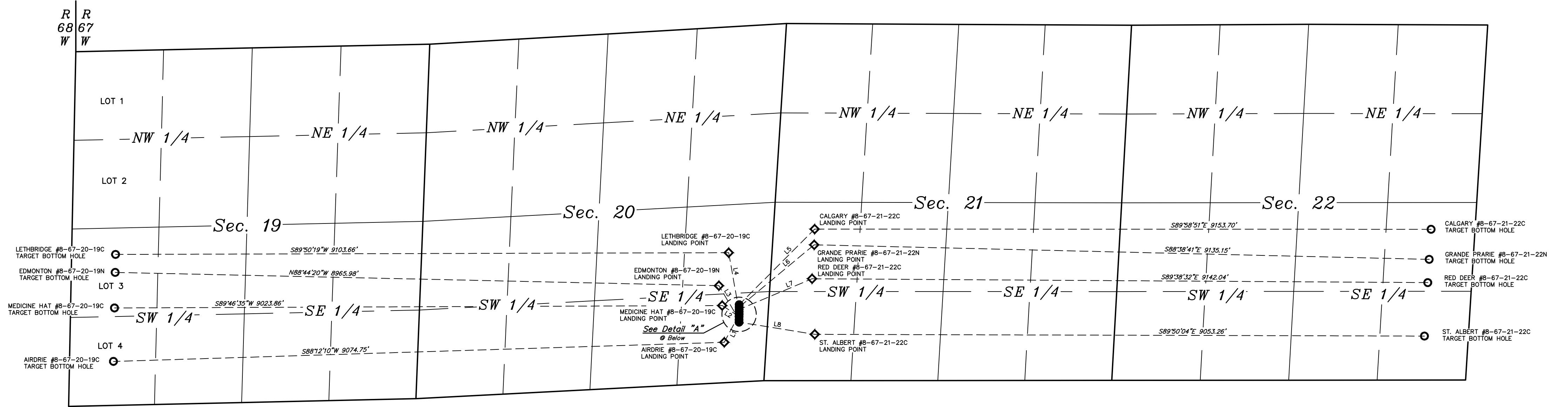


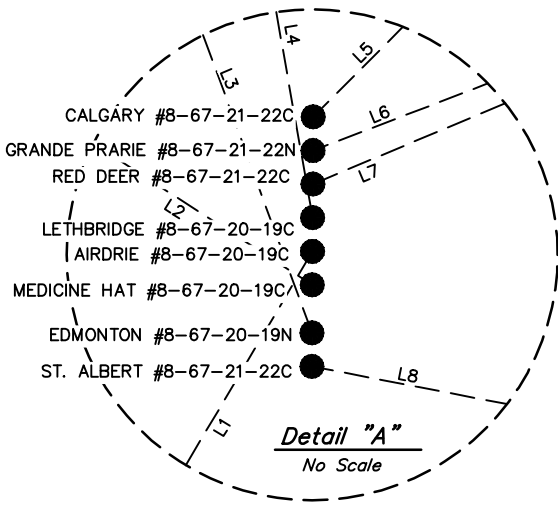
LEGEND:

- = PROPOSED WELLHEAD.
- = TARGET BOTTOM HOLE.
- ◇ = LANDING POINT

T8N, R67W, 6th P.M.



LINE TABLE		
LINE	DIRECTION	LENGTH
L1	S27°47'22"W	472.63'
L2	N57°10'01"W	298.63'
L3	N30°38'43"W	588.96'
L4	N10°04'42"W	890.59'
L5	N44°57'06"E	1585.44'
L6	N50°18'53"E	1447.14'
L7	N67°12'38"E	1174.74'
L8	S80°53'46"E	1137.63'



UELS, LLC  
Corporate Office \* 85 South 200 East  
Vernal, UT 84078 \* (435) 789-1017



REV: 3 11-19-18 R.T. (SURFACE HOLE MOVE)

ENERPLUS RESOURCES (USA) CORPORATION

ALBERTA CITIES PAD EAST  
SE 1/4 SE 1/4, SECTION 20, T8N, R67W, 6th P.M.  
WELD COUNTY, COLORADO

SURVEYED BY	G. WEIMER, J.F.	09-18-17	SCALE
DRAWN BY	E.C.	01-09-18	1" = 1000'
MULTI-WELL PLAN			FIGURE #7