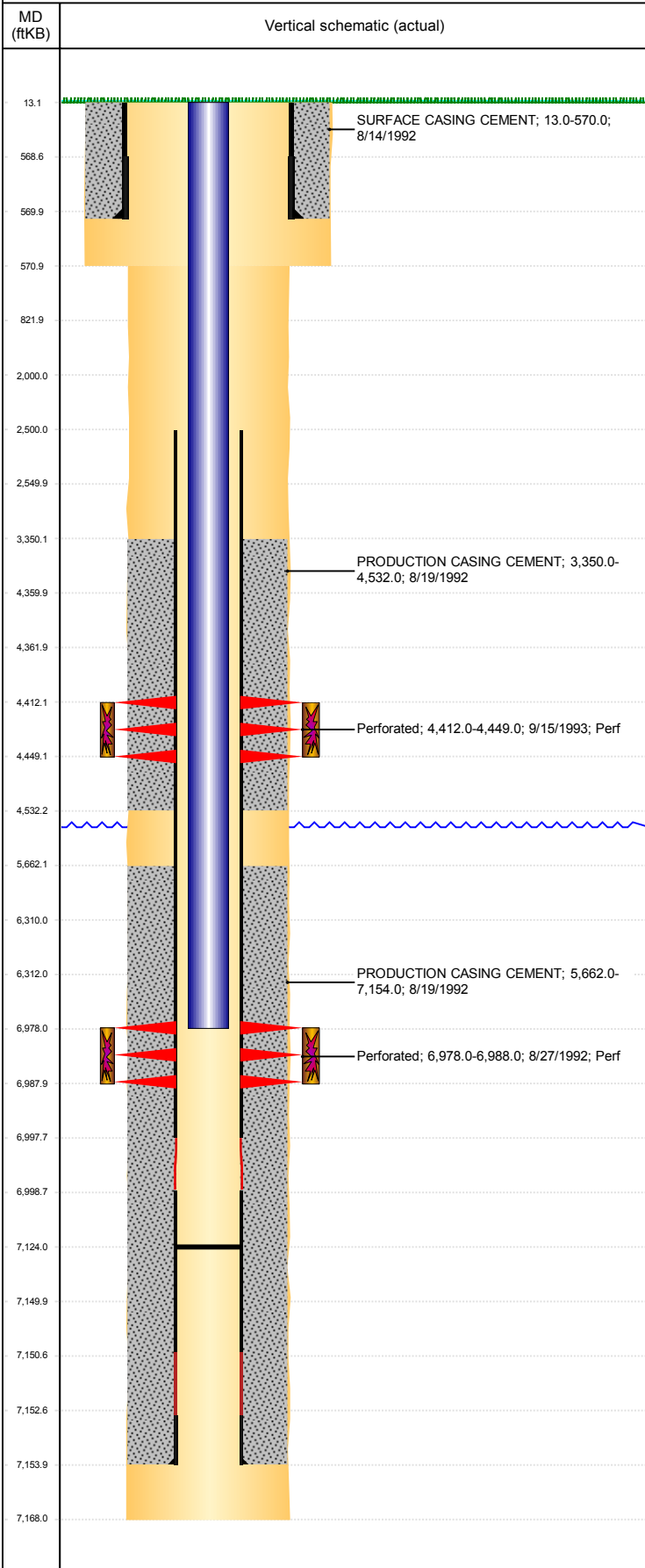


Well Name: SPIKE STATE D22-08

VERTICAL, ORIGINAL HOLE, 2/8/2019 10:47:52 AM



Well Header

API 05-123-16065	Business Unit DJ BASIN	District 15	Well Config VERTICAL
KB - GL / MSL (ft... 13.00	Spud Date 8/14/1992	P & A Date	Well Production Status SI
SoRT No			

Comment

Surface Location (Congressional)

Qtr 3 SE	Qtr 4 NE	Section 22	Twonshp 3	Twonsh... N	Range 64	Rng E... W	Actual Latitude (°) 40.21224670	Actual Longitude (°) -104.52962174
-------------	-------------	---------------	--------------	----------------	-------------	---------------	------------------------------------	---------------------------------------

Wellbore Sections

Section Des	Size (in)	Act Top, MD (ftKB)	Act Btm, MD (ftKB)
SURFACE	12 1/4	13	571
PRODUCTION	7 7/8	571	7,168

Casing Strings

Csg Des	Run Date	OD (in)	Wt/Len (lb/ft)	Grade	Top, MD (ftKB)	MD (ftKB)
Surface	8/14/1992	8 5/8	24.00	J-55	13.0	570.0
Production	8/19/1992	3 1/2	9.30	J-55	13.0	7,154.0

Cement

Des	Start Date	Top (ftKB)	Btm (ftKB)
SURFACE CASING CEMENT	8/14/1992	13.0	570.0
PRODUCTION CASING CEMENT	8/19/1992	3,350.0	4,532.0
PRODUCTION CASING CEMENT	8/19/1992	5,662.0	7,154.0

Zone Statuses

Zone Name	Status Date	Status	Fluid Type	Job	Prod Method
CODELL	6/22/2009	PR	Water		Flowing
CODELL	11/29/2016	SI			
SUSSEX	6/22/2009	PR	Water		Flowing
SUSSEX	11/29/2016	SI			
NIOBRARA	6/22/2009	PR	Water		Flowing

Perforation Data

Linked Zone	Bnch/Stg	Entered Shot Total	Top (ftKB)	Btm (ftKB)	Date
SUSSEX, ORIGINAL HOLE		15	4,412.00	4,449.00	9/15/1993
CODELL, ORIGINAL HOLE		40	6,978.00	6,988.00	8/27/1992

Stimulation Intervals

Zone	Start Date	Top (ftKB)	Btm (ftKB)
SUSSEX, ORIGINAL HOLE	9/15/1993	4,412.0	4,449.0
CODELL, ORIGINAL HOLE	8/31/1992	6,978.0	6,988.0

Other In Hole

Run Date	Des	OD (in)	Top (ftKB)	Btm (ftKB)

Logs

Date	Type	Top, MD (ftKB)	Btm, MD (ftKB)
8/17/1992	COMPENSATED DENSITY	4,180.0	7,144.0
8/17/1992	INDUCTION	4,180.0	4,730.0
8/27/1992	CEMENT BOND	3,190.0	7,119.0
3/12/2018	GYRO	13.0	6,900.0

Plug Back Total Depths

Date	Type	Com	Depth (ftKB)
8/19/1992	LATCH DOWN COLLAR		7,124.0