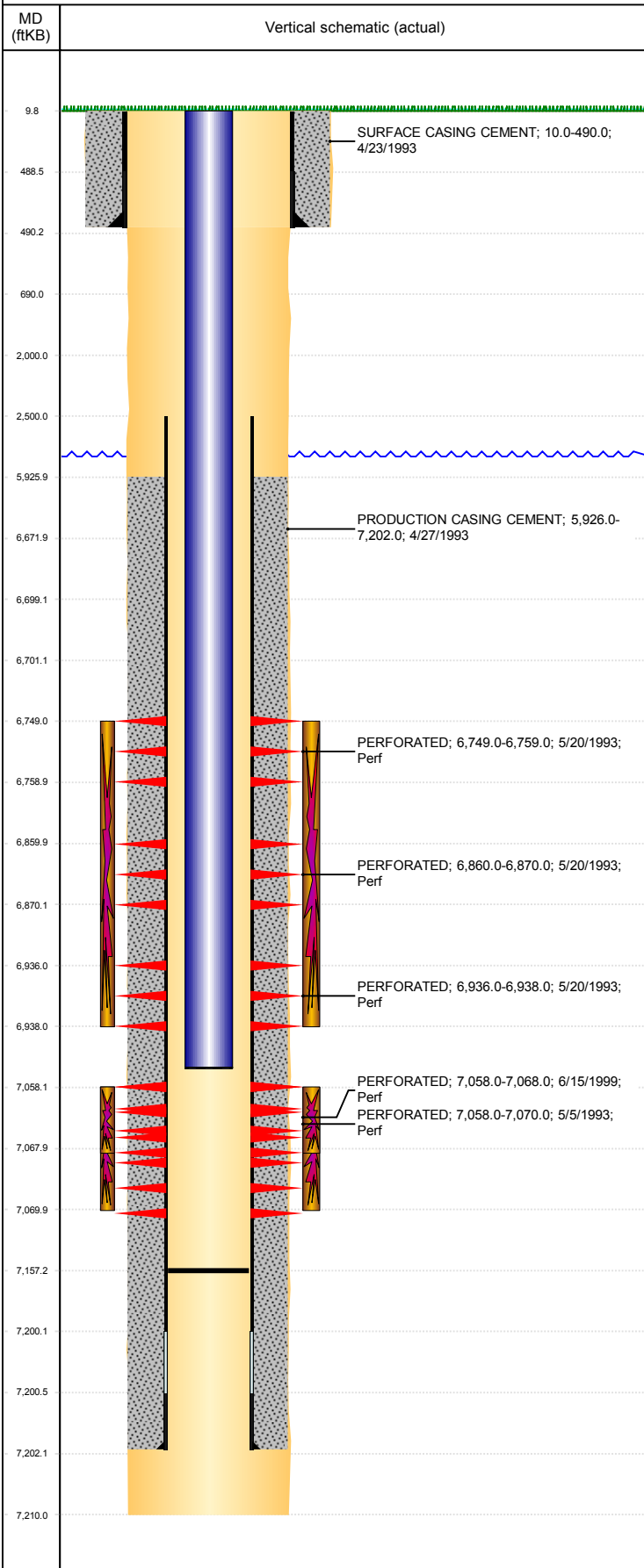


Well Name: TULLBERG 13-32

VERTICAL, ORIGINAL HOLE, 2/8/2019 10:39:50 AM



Well Header									
API 05-123-16976		Business Unit DJ BASIN			District 15		Well Config VERTICAL		
KB - GL / MSL (ft... 10.00		Spud Date 4/23/1993		P & A Date		Well Production Status PR		SoRT No	
Comment									
Surface Location (Congressional)									
Qtr 3 SW	Qtr 4 SW	Section 32	Twnshp 5	Twnsh... N	Range 64	Rng E... W	Actual Latitude (°) 40.34989950	Actual Longitude (°) -104.58017200	
Wellbore Sections									
Section Des			Size (in)			Act Top, MD (ftKB)		Act Btm, MD (ftKB)	
SURFACE			12 1/4			10		490	
PRODUCTION			7 7/8			490		7,210	
Casing Strings									
Csg Des			Run Date		OD (in)	Wt/Len (lb/ft)	Grade	Top, MD (ftKB)	MD (ftKB)
Surface			4/23/1993		8 5/8	24.00		10.0	490.0
Production			4/27/1993		4 1/2	11.60	I-70	10.0	7,202.0
Cement									
Des					Start Date		Top (ftKB)		Btm (ftKB)
SURFACE CASING CEMENT					4/23/1993		10.0		490.0
PRODUCTION CASING CEMENT					4/27/1993		5,926.0		7,202.0
Zone Statuses									
Zone Name	Status Date	Status	Fluid Type	Job				Prod Method	
NIOBRARA	5/24/1993	PR		DRILLING/COMPLETION - ORIGINAL, 4/23/1993...				Flowing	
CODELL	5/24/1993	PR		DRILLING/COMPLETION - ORIGINAL, 4/23/1993...				Flowing	
CODELL	6/23/1999	PR		RE-FRAC, 6/16/1999 00:00				Flowing	
Perforation Data									
Linked Zone			Bnch/Stg	Entered Shot Total	Top (ftKB)		Btm (ftKB)		Date
NIOBRARA, ORIGINAL HOLE			A	10	6,749.00		6,759.00		5/20/1993
NIOBRARA, ORIGINAL HOLE			B	10	6,860.00		6,870.00		5/20/1993
NIOBRARA, ORIGINAL HOLE			C	2	6,936.00		6,938.00		5/20/1993
CODELL, ORIGINAL HOLE				40	7,058.00		7,068.00		6/15/1999
CODELL, ORIGINAL HOLE					7,058.00		7,070.00		5/5/1993
Stimulation Intervals									
Zone				Start Date		Top (ftKB)		Btm (ftKB)	
NIOBRARA, ORIGINAL HOLE				5/21/1993		6,749.0		6,938.0	
CODELL, ORIGINAL HOLE				5/18/1993		7,058.0		7,070.0	
CODELL, ORIGINAL HOLE				6/16/1999		7,058.0		7,068.0	
Other In Hole									
Run Date		Des				OD (in)	Top (ftKB)	Btm (ftKB)	
Logs									
Date		Type				Top, MD (ftKB)		Btm, MD (ftKB)	
4/27/1993		COMPENSATED NEUTRON				4,280.0		7,206.0	
4/27/1993		INDUCTION				489.0		7,208.0	
5/4/1993		CEMENT BOND				5,850.0		7,106.0	
7/7/2016		GYRO				0.0		6,900.0	
Plug Back Total Depths									
Date		Type		Com				Depth (ftKB)	
5/4/1993		FILL		DEPTH LOGGER ON CBL				7,112.0	
5/22/1993		FILL		MOST RECENT CLEANOUT				7,157.0	