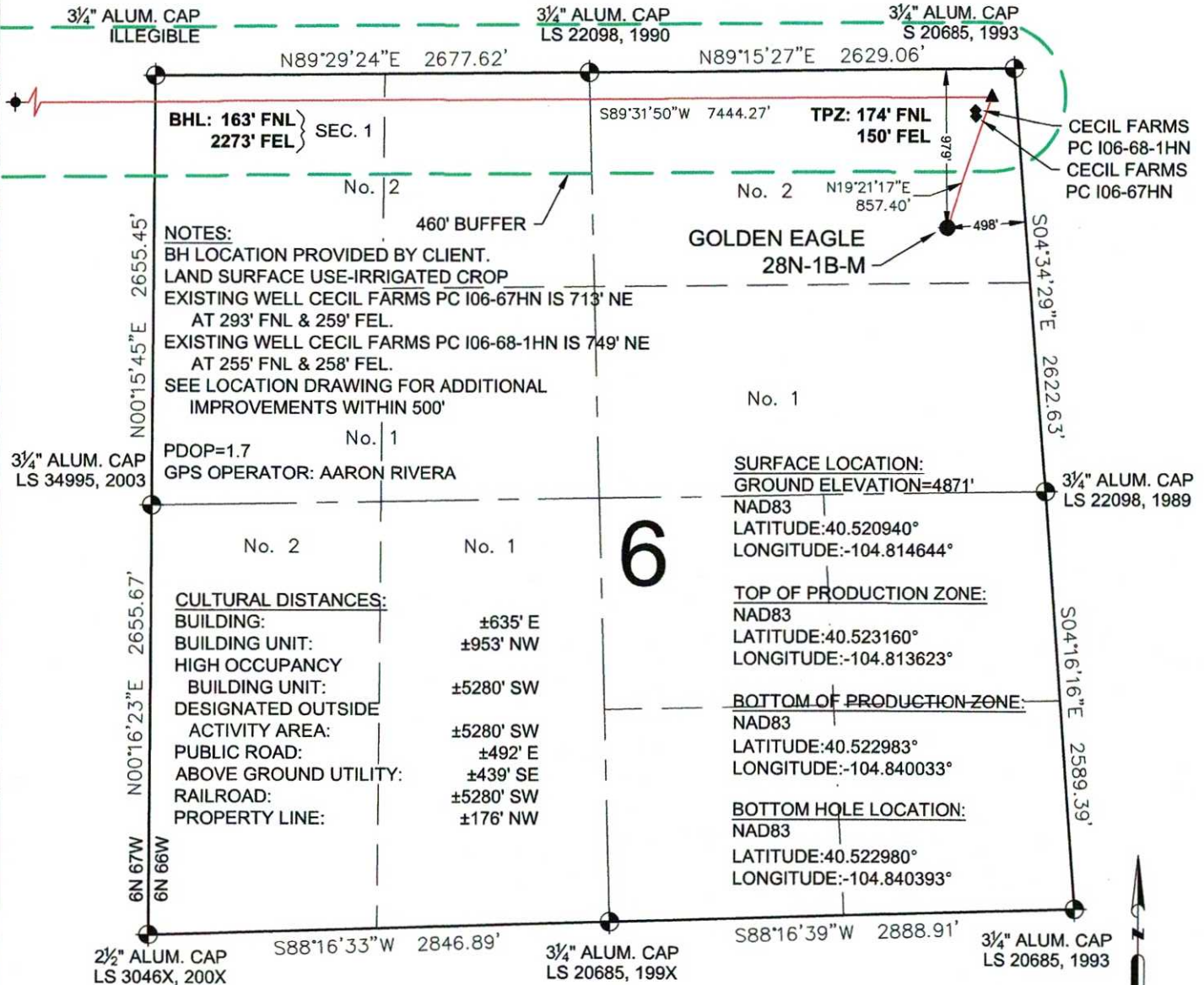


GOLDEN EAGLE 28N-1B-M WELL LOCATION EXHIBIT



LEGEND

- = EXISTING MONUMENT
- = CALCULATED POSITION
- = PROPOSED WELL
- ◆ = EXISTING WELL
- ◆ = BOTTOM HOLE
- △ = BOTTOM OF PRODUCTION ZONE
- ▲ = TOP OF PRODUCTION ZONE
- TPZ = TOP OF PRODUCTION ZONE
- BHL = BOTTOM HOLE LOCATION
- BPZ = BOTTOM OF PRODUCTION ZONE
- W.C. = WITNESS CORNER

NOTES:

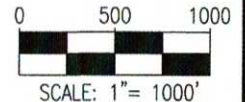
- THIS FIELD SURVEY CONFORMS TO THE MINIMUM STANDARDS SET BY THE C.O.G.C.C., RULE NO. 215
- ALL DISTANCES AND BEARINGS SHOWN HEREON ARE GROUND VALUES AS GPS MEASURED IN THE FIELD, WITH TIES TO WELLS MEASURED PERPENDICULAR TO LINES SHOWN HEREON. THIS LOW DISTORTION PROJECTION (LDP) IS BASED ON THE NORTH AMERICAN DATUM OF 1983, U.S. SURVEY FOOT WITH A LATITUDE ORIGIN OF 40.481168°N, A CENTRAL MERIDIAN LONGITUDE OF 104.773359°W, AND A SCALE FACTOR ON THE CENTRAL MERIDIAN OF 1.000221 (EXACT). THE LDP BASIS OF BEARINGS IS GEODETIC NORTH.
- FIELD VERIFICATION OF MONUMENTS COMPLETED WITHIN 1 YEAR OF SIGNATURE DATE, UNLESS OTHERWISE NOTED.

NOTICE: ACCORDING TO COLORADO LAW YOU MUST COMMENCE ANY LEGAL ACTION BASED UPON ANY DEFECT IN THIS SURVEY WITHIN THREE YEARS AFTER YOU FIRST DISCOVER SUCH DEFECT. IN NO EVENT MAY ANY ACTION BASED UPON ANY DEFECT IN THIS SURVEY BE COMMENCED MORE THAN TEN YEARS FROM THIS SAID DATE OF THIS CERTIFICATION SHOWN HEREON.

WELL GOLDEN EAGLE 28N-1B-M TO BE LOCATED 979' FNL & 498' FEL

I, MICHAEL L. POOL, A LICENSED PROFESSIONAL LAND SURVEYOR IN THE STATE OF COLORADO, DO HEREBY STATE TO **SRC ENERGY, INC.** THAT THE WELL LOCATION EXHIBIT SHOWN HEREON WAS PREPARED BY ME OR UNDER MY DIRECT SUPERVISION AND THE DRAWING SHOWN HEREON ACCURATELY DEPICTS THE PROPOSED LOCATION OF THE WELL. THIS EXHIBIT MEETS THE REQUIREMENTS OF A GIS LAND POSITION AS DEFINED BY SECTION 38-51-102 (7.5) C.R.S. AND AS SUCH PER SECTION 38-51-109.3 C.R.S. CANNOT BE RELIED UPON TO DETERMINE OWNERSHIP.

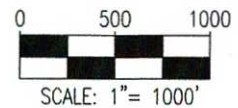
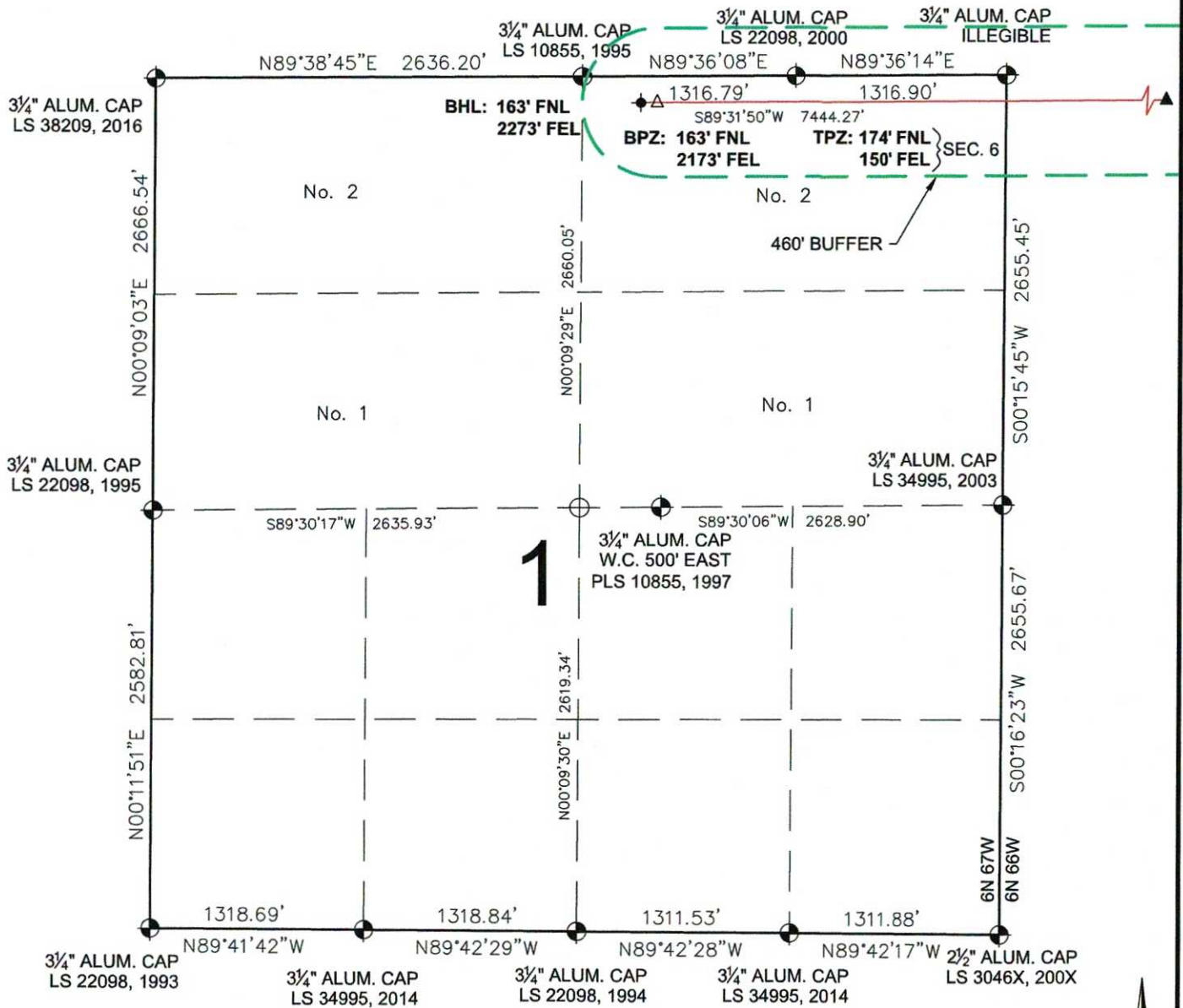
MICHAEL L. POOL, PLS 38304
COLORADO LICENSED PROFESSIONAL LAND SURVEYOR
FOR AND ON BEHALF OF P.F.S., LLC
d.b.a. ASCENT GEOMATICS SOLUTIONS



SHEET 1 OF 2

<p>7535 Hilltop Circle Denver, CO 80221 (303) 928-7128 www.ascentgeomatics.com</p>	FIELD DATE: 04-24-18	WELL NAME: GOLDEN EAGLE 28N-1B-M	PREPARED FOR: <p>SRC ENERGY</p>
	DRAWING DATE: 11-28-18	SURFACE LOCATION: LOT 2 NE 1/4 SEC. 6, T6N, R66W, 6TH P.M.	
BY: CSG	CHECKED BY: DNS	WELD COUNTY, COLORADO	

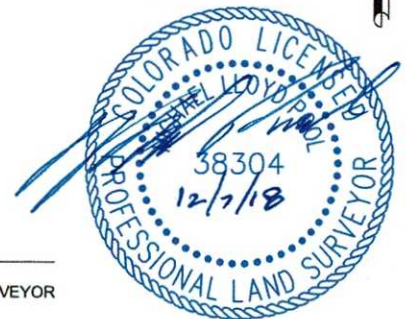
GOLDEN EAGLE 28N-1B-M WELL LOCATION EXHIBIT



LEGEND

- | | |
|---|---|
| <ul style="list-style-type: none"> ⊙ = EXISTING MONUMENT ○ = CALCULATED POSITION ● = PROPOSED WELL ◆ = EXISTING WELL ⬢ = BOTTOM HOLE | <ul style="list-style-type: none"> △ = BOTTOM OF PRODUCTION ZONE ▲ = TOP OF PRODUCTION ZONE TPZ = TOP OF PRODUCTION ZONE BHL = BOTTOM HOLE LOCATION BPZ = BOTTOM OF PRODUCTION ZONE W.C. = WITNESS CORNER |
|---|---|

MICHAEL L. POOL, PLS 38304
 COLORADO LICENSED PROFESSIONAL LAND SURVEYOR
 FOR AND ON BEHALF OF P.F.S., LLC
 d.b.a. ASCENT GEOMATICS SOLUTIONS



SHEET 2 OF 2



FIELD DATE:
04-24-18
 DRAWING DATE:
11-28-18
 BY:
CSG
 CHECKED BY:
DNS

WELL NAME:
GOLDEN EAGLE 28N-1B-M
 SURFACE LOCATION:
LOT 2 NE 1/4 SEC. 6, T6N, R66W, 6TH P.M.
 WELD COUNTY, COLORADO

