

# **SRC ENERGY**

**WELD COUNTY (NAD83, TRUE NORTH)  
6N-66W-06 GOLDEN EAGLE 1-6 PAD  
GOLDEN EAGLE 28N-1B-M**

**Wellbore #1**

**Plan: Design #1**

## **Standard Planning Report**

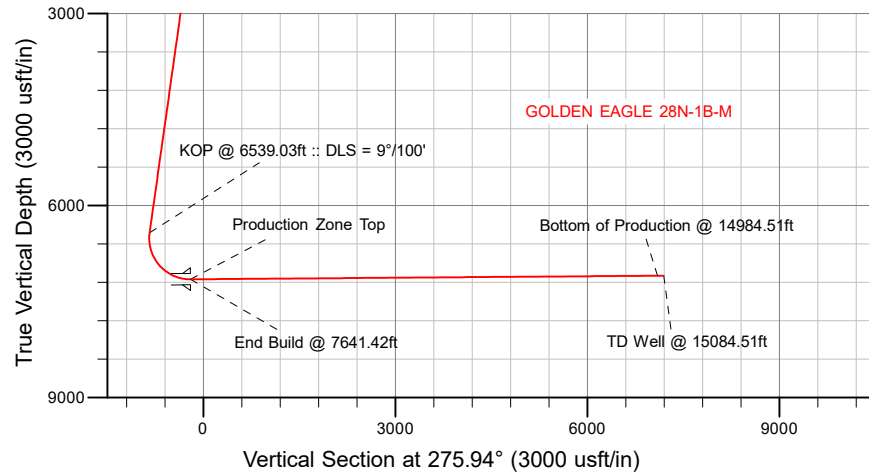
**13 December, 2018**

Project: WELD COUNTY (NAD83, TRUE NORTH)  
Site: 6N-66W-06 GOLDEN EAGLE 1-6 PAD  
Well: GOLDEN EAGLE 28N-1B-M  
Wellbore: Wellbore #1  
Design: Design #1

# SRC ENERGY

## CASING DETAILS

TVD	MD	Name
1800.00	1823.60	9 5/8"
7155.00	7641.42	Production Zone Top



## SECTION DETAILS

Sec	MD	Inc	Azi	TVD	+N/-S	+E/-W	Dleg	TFace	VSec	Target
1	0.00	0.00	0.00	0.00	0.00	0.00	0.00	0.00	0.00	
2	200.00	0.00	0.00	200.00	0.00	0.00	0.00	0.00	0.00	
3	757.00	11.14	51.70	753.50	33.45	42.36	2.00	51.70	-38.67	
4	6539.03	11.14	51.70	6426.58	725.83	919.06	0.00	0.00	-839.05	
5	7641.42	90.44	269.50	7155.00	808.94	284.34	9.00	-141.61	-199.14	
6	14984.51	90.44	269.50	7099.00	745.29	-7058.27	0.00	0.00	7097.50	GOLDEN EAGLE 28N-1B-M_BPZ
7	15084.51	90.44	269.50	7098.24	744.43	-7158.26	0.00	0.00	7196.87	

## WELLBORE TARGET DETAILS (LAT/LONG)

Name	TVD	+N/-S	+E/-W	Latitude	Longitude
GOLDEN EAGLE 28N-1B-M_SHL	0.00	0.00	0.00	40.520940	-104.814644
GOLDEN EAGLE 28N-1B-M_BPZ	7099.00	745.29	-7058.27	40.522983	-104.840033
GOLDEN EAGLE 28N-1B-M_BHL	7098.24	744.43	-7158.26	40.522981	-104.840393

SHL  
979' FNL  
498' FEL

LP  
174' FNL  
150' FEL  
40.523160° Lat  
-104.813623° Long

BPZ  
163' FNL  
2173' FEL

BHL  
163' FNL  
2273' FEL

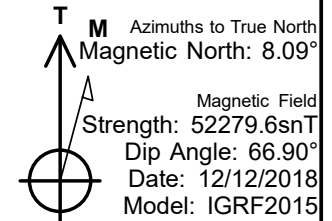
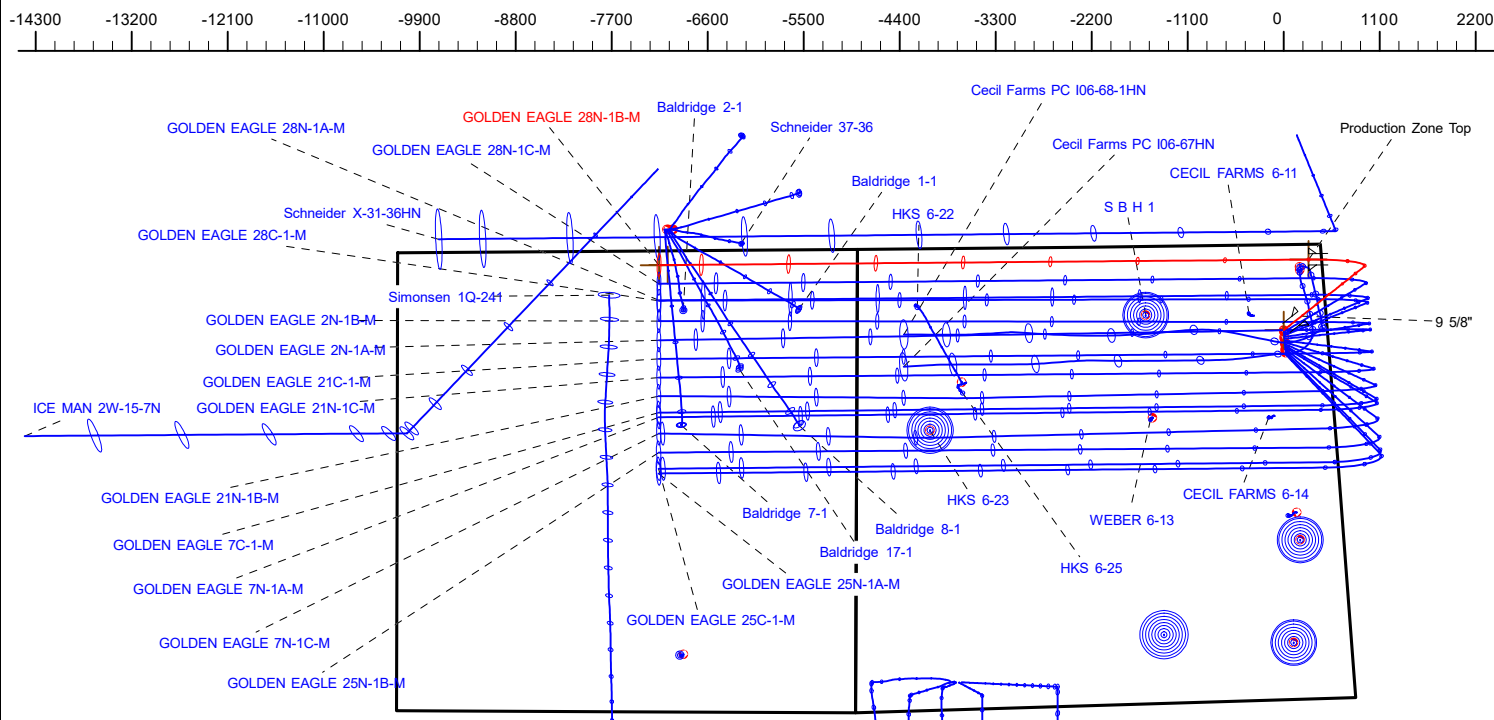
WELL DETAILS: GOLDEN EAGLE 28N-1B-M

GL = 4871'

RKB = 4' @ 4875.00usft (IKON 12)

Plan: Design #1 (GOLDEN EAGLE 28N-1B-M/Wellbore #1)

Date: 12/13/2018



# Hewlett-Packard

## Planning Report

<b>Database:</b>	EDM 5000.14 Single User Db	<b>Local Co-ordinate Reference:</b>	Well GOLDEN EAGLE 28N-1B-M
<b>Company:</b>	SRC ENERGY	<b>TVD Reference:</b>	RKB = 4' @ 4875.00usft (IKON 12)
<b>Project:</b>	WELD COUNTY (NAD83, TRUE NORTH)	<b>MD Reference:</b>	RKB = 4' @ 4875.00usft (IKON 12)
<b>Site:</b>	6N-66W-06 GOLDEN EAGLE 1-6 PAD	<b>North Reference:</b>	True
<b>Well:</b>	GOLDEN EAGLE 28N-1B-M	<b>Survey Calculation Method:</b>	Minimum Curvature
<b>Wellbore:</b>	Wellbore #1		
<b>Design:</b>	Design #1		

<b>Project</b>	WELD COUNTY (NAD83, TRUE NORTH)		
<b>Map System:</b>	US State Plane 1983	<b>System Datum:</b>	Mean Sea Level
<b>Geo Datum:</b>	North American Datum 1983		
<b>Map Zone:</b>	Colorado Northern Zone		

Site		6N-66W-06 GOLDEN EAGLE 1-6 PAD			
Site Position:		Northing:	1,433,355.39 usft	Latitude:	40.520940
From:	Lat/Long	Easting:	3,190,536.32 usft	Longitude:	-104.814644
Position Uncertainty:	0.00 usft	Slot Radius:	13-3/16 "	Grid Convergence:	0.44 °

Well	GOLDEN EAGLE 28N-1B-M					
Well Position	+N/-S	0.00 usft	Northing:	1,433,355.39 usft	Latitude:	40.520940
	+E/-W	0.00 usft	Easting:	3,190,536.32 usft	Longitude:	-104.814644
Position Uncertainty		3.28 usft	Wellhead Elevation:		Ground Level:	4,871.00 usft

<b>Wellbore</b>	Wellbore #1				
<b>Magnetics</b>	<b>Model Name</b>	<b>Sample Date</b>	<b>Declination (°)</b>	<b>Dip Angle (°)</b>	<b>Field Strength (nT)</b>
	IGRF2015	12/12/2018	8.09	66.90	52,279.57849897

<b>Design</b>	Design #1				
<b>Audit Notes:</b>					
<b>Version:</b>		<b>Phase:</b>	PLAN	<b>Tie On Depth:</b>	0.00
<b>Vertical Section:</b>	<b>Depth From (TVD) (usft)</b>	<b>+N/-S (usft)</b>	<b>+E/-W (usft)</b>	<b>Direction (°)</b>	
	0.00	0.00	0.00	275.94	

<b>Plan Survey Tool Program</b>	<b>Date</b>	12/13/2018			
<b>Depth From (usft)</b>	<b>Depth To (usft)</b>	<b>Survey (Wellbore)</b>	<b>Tool Name</b>	<b>Remarks</b>	
1	0.00	1,800.00	Design #1 (Wellbore #1)	SRC Energy_ISCWSA REV 2	
				Fixed:v2:crustal field declinatio	
2	1,800.00	15,084.51	Design #1 (Wellbore #1)	SRC Energy_ISCWSA REV 2	
				Fixed:v2:Rockies, crustal dec +	

Hewlett-Packard  
Planning Report

Database:	EDM 5000.14 Single User Db	Local Co-ordinate Reference:	Well GOLDEN EAGLE 28N-1B-M
Company:	SRC ENERGY	TVD Reference:	RKB = 4' @ 4875.00usft (IKON 12)
Project:	WELD COUNTY (NAD83, TRUE NORTH)	MD Reference:	RKB = 4' @ 4875.00usft (IKON 12)
Site:	6N-66W-06 GOLDEN EAGLE 1-6 PAD	North Reference:	True
Well:	GOLDEN EAGLE 28N-1B-M	Survey Calculation Method:	Minimum Curvature
Wellbore:	Wellbore #1		
Design:	Design #1		

Plan Sections										
Measured Depth (usft)	Inclination (°)	Azimuth (°)	Vertical Depth (usft)	+N/-S (usft)	+E/-W (usft)	Dogleg Rate (°/100usft)	Build Rate (°/100usft)	Turn Rate (°/100usft)	TFO (°)	Target
0.00	0.00	0.00	0.00	0.00	0.00	0.00	0.00	0.00	0.00	
200.00	0.00	0.00	200.00	0.00	0.00	0.00	0.00	0.00	0.00	
757.00	11.14	51.70	753.50	33.45	42.36	2.00	2.00	0.00	51.70	
6,539.03	11.14	51.70	6,426.58	725.83	919.06	0.00	0.00	0.00	0.00	
7,641.42	90.44	269.50	7,155.00	808.94	284.34	9.00	7.19	-12.90	-141.61	
14,984.51	90.44	269.50	7,099.00	745.29	-7,058.27	0.00	0.00	0.00	0.00	GOLDEN EAGLE 28N
15,084.51	90.44	269.50	7,098.24	744.43	-7,158.27	0.00	0.00	0.00	0.00	

# Hewlett-Packard

## Planning Report

<b>Database:</b>	EDM 5000.14 Single User Db	<b>Local Co-ordinate Reference:</b>	Well GOLDEN EAGLE 28N-1B-M
<b>Company:</b>	SRC ENERGY	<b>TVD Reference:</b>	RKB = 4' @ 4875.00usft (IKON 12)
<b>Project:</b>	WELD COUNTY (NAD83, TRUE NORTH)	<b>MD Reference:</b>	RKB = 4' @ 4875.00usft (IKON 12)
<b>Site:</b>	6N-66W-06 GOLDEN EAGLE 1-6 PAD	<b>North Reference:</b>	True
<b>Well:</b>	GOLDEN EAGLE 28N-1B-M	<b>Survey Calculation Method:</b>	Minimum Curvature
<b>Wellbore:</b>	Wellbore #1		
<b>Design:</b>	Design #1		

Planned Survey									
Measured Depth (usft)	Inclination (°)	Azimuth (°)	Vertical Depth (usft)	+N/-S (usft)	+E/-W (usft)	Vertical Section (usft)	Dogleg Rate (°/100usft)	Build Rate (°/100usft)	Turn Rate (°/100usft)
0.00	0.00	0.00	0.00	0.00	0.00	0.00	0.00	0.00	0.00
100.00	0.00	0.00	100.00	0.00	0.00	0.00	0.00	0.00	0.00
200.00	0.00	0.00	200.00	0.00	0.00	0.00	0.00	0.00	0.00
Begin Nudge @ 200.00ft									
300.00	2.00	51.70	299.98	1.08	1.37	-1.25	2.00	2.00	0.00
400.00	4.00	51.70	399.84	4.33	5.48	-5.00	2.00	2.00	0.00
500.00	6.00	51.70	499.45	9.73	12.32	-11.24	2.00	2.00	0.00
600.00	8.00	51.70	598.70	17.28	21.88	-19.97	2.00	2.00	0.00
700.00	10.00	51.70	697.47	26.97	34.16	-31.18	2.00	2.00	0.00
757.00	11.14	51.70	753.50	33.45	42.36	-38.67	2.00	2.00	0.00
Hold Tangent @ 757.00ft									
800.00	11.14	51.70	795.69	38.60	48.88	-44.63	0.00	0.00	0.00
900.00	11.14	51.70	893.80	50.58	64.04	-58.47	0.00	0.00	0.00
1,000.00	11.14	51.70	991.92	62.55	79.21	-72.31	0.00	0.00	0.00
1,100.00	11.14	51.70	1,090.03	74.53	94.37	-86.15	0.00	0.00	0.00
1,200.00	11.14	51.70	1,188.15	86.50	109.53	-100.00	0.00	0.00	0.00
1,300.00	11.14	51.70	1,286.27	98.48	124.69	-113.84	0.00	0.00	0.00
1,400.00	11.14	51.70	1,384.38	110.45	139.86	-127.68	0.00	0.00	0.00
1,500.00	11.14	51.70	1,482.50	122.43	155.02	-141.52	0.00	0.00	0.00
1,600.00	11.14	51.70	1,580.61	134.40	170.18	-155.37	0.00	0.00	0.00
1,700.00	11.14	51.70	1,678.73	146.37	185.34	-169.21	0.00	0.00	0.00
1,800.00	11.14	51.70	1,776.85	158.35	200.51	-183.05	0.00	0.00	0.00
1,823.60	11.14	51.70	1,800.00	161.18	204.08	-186.32	0.00	0.00	0.00
9 5/8"									
1,900.00	11.14	51.70	1,874.96	170.32	215.67	-196.89	0.00	0.00	0.00
2,000.00	11.14	51.70	1,973.08	182.30	230.83	-210.74	0.00	0.00	0.00
2,100.00	11.14	51.70	2,071.19	194.27	245.99	-224.58	0.00	0.00	0.00
2,200.00	11.14	51.70	2,169.31	206.25	261.15	-238.42	0.00	0.00	0.00
2,300.00	11.14	51.70	2,267.42	218.22	276.32	-252.26	0.00	0.00	0.00
2,400.00	11.14	51.70	2,365.54	230.20	291.48	-266.11	0.00	0.00	0.00
2,500.00	11.14	51.70	2,463.66	242.17	306.64	-279.95	0.00	0.00	0.00
2,600.00	11.14	51.70	2,561.77	254.15	321.80	-293.79	0.00	0.00	0.00
2,700.00	11.14	51.70	2,659.89	266.12	336.97	-307.63	0.00	0.00	0.00
2,800.00	11.14	51.70	2,758.00	278.09	352.13	-321.47	0.00	0.00	0.00
2,900.00	11.14	51.70	2,856.12	290.07	367.29	-335.32	0.00	0.00	0.00
3,000.00	11.14	51.70	2,954.23	302.04	382.45	-349.16	0.00	0.00	0.00
3,100.00	11.14	51.70	3,052.35	314.02	397.62	-363.00	0.00	0.00	0.00
3,200.00	11.14	51.70	3,150.47	325.99	412.78	-376.84	0.00	0.00	0.00
3,300.00	11.14	51.70	3,248.58	337.97	427.94	-390.69	0.00	0.00	0.00
3,400.00	11.14	51.70	3,346.70	349.94	443.10	-404.53	0.00	0.00	0.00
3,500.00	11.14	51.70	3,444.81	361.92	458.27	-418.37	0.00	0.00	0.00
3,600.00	11.14	51.70	3,542.93	373.89	473.43	-432.21	0.00	0.00	0.00
3,700.00	11.14	51.70	3,641.05	385.87	488.59	-446.06	0.00	0.00	0.00
3,800.00	11.14	51.70	3,739.16	397.84	503.75	-459.90	0.00	0.00	0.00
3,900.00	11.14	51.70	3,837.28	409.82	518.92	-473.74	0.00	0.00	0.00
4,000.00	11.14	51.70	3,935.39	421.79	534.08	-487.58	0.00	0.00	0.00
4,100.00	11.14	51.70	4,033.51	433.76	549.24	-501.43	0.00	0.00	0.00
4,200.00	11.14	51.70	4,131.62	445.74	564.40	-515.27	0.00	0.00	0.00
4,300.00	11.14	51.70	4,229.74	457.71	579.57	-529.11	0.00	0.00	0.00
4,400.00	11.14	51.70	4,327.86	469.69	594.73	-542.95	0.00	0.00	0.00
4,500.00	11.14	51.70	4,425.97	481.66	609.89	-556.80	0.00	0.00	0.00
4,600.00	11.14	51.70	4,524.09	493.64	625.05	-570.64	0.00	0.00	0.00
4,700.00	11.14	51.70	4,622.20	505.61	640.22	-584.48	0.00	0.00	0.00

# Hewlett-Packard

## Planning Report

<b>Database:</b>	EDM 5000.14 Single User Db	<b>Local Co-ordinate Reference:</b>	Well GOLDEN EAGLE 28N-1B-M
<b>Company:</b>	SRC ENERGY	<b>TVD Reference:</b>	RKB = 4' @ 4875.00usft (IKON 12)
<b>Project:</b>	WELD COUNTY (NAD83, TRUE NORTH)	<b>MD Reference:</b>	RKB = 4' @ 4875.00usft (IKON 12)
<b>Site:</b>	6N-66W-06 GOLDEN EAGLE 1-6 PAD	<b>North Reference:</b>	True
<b>Well:</b>	GOLDEN EAGLE 28N-1B-M	<b>Survey Calculation Method:</b>	Minimum Curvature
<b>Wellbore:</b>	Wellbore #1		
<b>Design:</b>	Design #1		

Planned Survey									
Measured Depth (usft)	Inclination (°)	Azimuth (°)	Vertical Depth (usft)	+N/-S (usft)	+E/-W (usft)	Vertical Section (usft)	Dogleg Rate (°/100usft)	Build Rate (°/100usft)	Turn Rate (°/100usft)
4,800.00	11.14	51.70	4,720.32	517.59	655.38	-598.32	0.00	0.00	0.00
4,900.00	11.14	51.70	4,818.44	529.56	670.54	-612.17	0.00	0.00	0.00
5,000.00	11.14	51.70	4,916.55	541.54	685.70	-626.01	0.00	0.00	0.00
5,100.00	11.14	51.70	5,014.67	553.51	700.87	-639.85	0.00	0.00	0.00
5,200.00	11.14	51.70	5,112.78	565.48	716.03	-653.69	0.00	0.00	0.00
5,300.00	11.14	51.70	5,210.90	577.46	731.19	-667.54	0.00	0.00	0.00
5,400.00	11.14	51.70	5,309.01	589.43	746.35	-681.38	0.00	0.00	0.00
5,500.00	11.14	51.70	5,407.13	601.41	761.51	-695.22	0.00	0.00	0.00
5,600.00	11.14	51.70	5,505.25	613.38	776.68	-709.06	0.00	0.00	0.00
5,700.00	11.14	51.70	5,603.36	625.36	791.84	-722.91	0.00	0.00	0.00
5,800.00	11.14	51.70	5,701.48	637.33	807.00	-736.75	0.00	0.00	0.00
5,900.00	11.14	51.70	5,799.59	649.31	822.16	-750.59	0.00	0.00	0.00
6,000.00	11.14	51.70	5,897.71	661.28	837.33	-764.43	0.00	0.00	0.00
6,100.00	11.14	51.70	5,995.82	673.26	852.49	-778.28	0.00	0.00	0.00
6,200.00	11.14	51.70	6,093.94	685.23	867.65	-792.12	0.00	0.00	0.00
6,300.00	11.14	51.70	6,192.06	697.20	882.81	-805.96	0.00	0.00	0.00
6,400.00	11.14	51.70	6,290.17	709.18	897.98	-819.80	0.00	0.00	0.00
6,500.00	11.14	51.70	6,388.29	721.15	913.14	-833.65	0.00	0.00	0.00
6,539.03	11.14	51.70	6,426.58	725.83	919.06	-839.05	0.00	0.00	0.00
<b>KOP @ 6539.03ft :: DLS = 9°/100'</b>									
6,600.00	7.63	25.14	6,486.75	733.15	925.40	-844.60	9.00	-5.76	-43.56
6,700.00	8.94	319.73	6,585.91	745.11	923.20	-841.17	9.00	1.31	-65.41
6,800.00	16.21	294.11	6,683.51	756.77	905.39	-822.26	9.00	7.27	-25.62
6,900.00	24.64	284.83	6,777.16	767.83	872.43	-788.33	9.00	8.42	-9.28
7,000.00	33.35	280.14	6,864.56	778.03	825.13	-740.22	9.00	8.71	-4.70
7,100.00	42.17	277.22	6,943.54	787.10	764.64	-679.12	9.00	8.82	-2.91
7,200.00	51.05	275.16	7,012.17	794.84	692.46	-606.53	9.00	8.88	-2.06
7,300.00	59.95	273.56	7,068.75	801.04	610.37	-524.23	9.00	8.90	-1.60
7,400.00	68.87	272.23	7,111.90	805.56	520.38	-434.26	9.00	8.92	-1.33
7,500.00	77.80	271.05	7,140.54	808.28	424.72	-338.83	9.00	8.93	-1.18
7,600.00	86.74	269.95	7,153.98	809.14	325.73	-240.29	9.00	8.93	-1.10
7,641.42	90.44	269.50	7,155.00	808.94	284.33	-199.13	9.00	8.93	-1.08
<b>End Build @ 7641.42ft - Production Zone Top</b>									
7,700.00	90.44	269.50	7,154.55	808.43	225.75	-140.92	0.00	0.00	0.00
7,800.00	90.44	269.50	7,153.79	807.56	125.76	-41.55	0.00	0.00	0.00
7,900.00	90.44	269.50	7,153.03	806.70	25.77	57.81	0.00	0.00	0.00
8,000.00	90.44	269.50	7,152.26	805.83	-74.23	157.18	0.00	0.00	0.00
8,100.00	90.44	269.50	7,151.50	804.96	-174.22	256.55	0.00	0.00	0.00
8,200.00	90.44	269.50	7,150.74	804.10	-274.21	355.92	0.00	0.00	0.00
8,300.00	90.44	269.50	7,149.98	803.23	-374.21	455.28	0.00	0.00	0.00
8,400.00	90.44	269.50	7,149.21	802.36	-474.20	554.65	0.00	0.00	0.00
8,500.00	90.44	269.50	7,148.45	801.50	-574.19	654.02	0.00	0.00	0.00
8,600.00	90.44	269.50	7,147.69	800.63	-674.19	753.38	0.00	0.00	0.00
8,700.00	90.44	269.50	7,146.93	799.76	-774.18	852.75	0.00	0.00	0.00
8,800.00	90.44	269.50	7,146.16	798.90	-874.17	952.12	0.00	0.00	0.00
8,900.00	90.44	269.50	7,145.40	798.03	-974.17	1,051.49	0.00	0.00	0.00
9,000.00	90.44	269.50	7,144.64	797.16	-1,074.16	1,150.85	0.00	0.00	0.00
9,100.00	90.44	269.50	7,143.88	796.30	-1,174.15	1,250.22	0.00	0.00	0.00
9,200.00	90.44	269.50	7,143.11	795.43	-1,274.15	1,349.59	0.00	0.00	0.00
9,300.00	90.44	269.50	7,142.35	794.56	-1,374.14	1,448.96	0.00	0.00	0.00
9,400.00	90.44	269.50	7,141.59	793.70	-1,474.13	1,548.32	0.00	0.00	0.00
9,500.00	90.44	269.50	7,140.83	792.83	-1,574.13	1,647.69	0.00	0.00	0.00
9,600.00	90.44	269.50	7,140.06	791.96	-1,674.12	1,747.06	0.00	0.00	0.00
9,700.00	90.44	269.50	7,139.30	791.10	-1,774.11	1,846.42	0.00	0.00	0.00

## Planning Report

Planned Survey									
Measured Depth (usft)	Inclination (°)	Azimuth (°)	Vertical Depth (usft)	+N/-S (usft)	+E/-W (usft)	Vertical Section (usft)	Dogleg Rate (°/100usft)	Build Rate (°/100usft)	Turn Rate (°/100usft)
9,800.00	90.44	269.50	7,138.54	790.23	-1,874.11	1,945.79	0.00	0.00	0.00
9,900.00	90.44	269.50	7,137.77	789.36	-1,974.10	2,045.16	0.00	0.00	0.00
10,000.00	90.44	269.50	7,137.01	788.50	-2,074.09	2,144.53	0.00	0.00	0.00
10,100.00	90.44	269.50	7,136.25	787.63	-2,174.09	2,243.89	0.00	0.00	0.00
10,200.00	90.44	269.50	7,135.49	786.76	-2,274.08	2,343.26	0.00	0.00	0.00
10,300.00	90.44	269.50	7,134.72	785.90	-2,374.07	2,442.63	0.00	0.00	0.00
10,400.00	90.44	269.50	7,133.96	785.03	-2,474.07	2,542.00	0.00	0.00	0.00
10,500.00	90.44	269.50	7,133.20	784.16	-2,574.06	2,641.36	0.00	0.00	0.00
10,600.00	90.44	269.50	7,132.44	783.30	-2,674.05	2,740.73	0.00	0.00	0.00
10,700.00	90.44	269.50	7,131.67	782.43	-2,774.05	2,840.10	0.00	0.00	0.00
10,800.00	90.44	269.50	7,130.91	781.56	-2,874.04	2,939.47	0.00	0.00	0.00
10,900.00	90.44	269.50	7,130.15	780.70	-2,974.03	3,038.83	0.00	0.00	0.00
11,000.00	90.44	269.50	7,129.39	779.83	-3,074.03	3,138.20	0.00	0.00	0.00
11,100.00	90.44	269.50	7,128.62	778.96	-3,174.02	3,237.57	0.00	0.00	0.00
11,200.00	90.44	269.50	7,127.86	778.10	-3,274.01	3,336.93	0.00	0.00	0.00
11,300.00	90.44	269.50	7,127.10	777.23	-3,374.01	3,436.30	0.00	0.00	0.00
11,400.00	90.44	269.50	7,126.34	776.36	-3,474.00	3,535.67	0.00	0.00	0.00
11,500.00	90.44	269.50	7,125.57	775.50	-3,573.99	3,635.04	0.00	0.00	0.00
11,600.00	90.44	269.50	7,124.81	774.63	-3,673.99	3,734.40	0.00	0.00	0.00
11,700.00	90.44	269.50	7,124.05	773.76	-3,773.98	3,833.77	0.00	0.00	0.00
11,800.00	90.44	269.50	7,123.29	772.90	-3,873.97	3,933.14	0.00	0.00	0.00
11,900.00	90.44	269.50	7,122.52	772.03	-3,973.97	4,032.51	0.00	0.00	0.00
12,000.00	90.44	269.50	7,121.76	771.16	-4,073.96	4,131.87	0.00	0.00	0.00
12,100.00	90.44	269.50	7,121.00	770.30	-4,173.95	4,231.24	0.00	0.00	0.00
12,200.00	90.44	269.50	7,120.23	769.43	-4,273.95	4,330.61	0.00	0.00	0.00
12,300.00	90.44	269.50	7,119.47	768.56	-4,373.94	4,429.98	0.00	0.00	0.00
12,400.00	90.44	269.50	7,118.71	767.70	-4,473.93	4,529.34	0.00	0.00	0.00
12,500.00	90.44	269.50	7,117.95	766.83	-4,573.93	4,628.71	0.00	0.00	0.00
12,600.00	90.44	269.50	7,117.18	765.96	-4,673.92	4,728.08	0.00	0.00	0.00
12,700.00	90.44	269.50	7,116.42	765.09	-4,773.91	4,827.44	0.00	0.00	0.00
12,800.00	90.44	269.50	7,115.66	764.23	-4,873.91	4,926.81	0.00	0.00	0.00
12,900.00	90.44	269.50	7,114.90	763.36	-4,973.90	5,026.18	0.00	0.00	0.00
13,000.00	90.44	269.50	7,114.13	762.49	-5,073.89	5,125.55	0.00	0.00	0.00
13,100.00	90.44	269.50	7,113.37	761.63	-5,173.89	5,224.91	0.00	0.00	0.00
13,200.00	90.44	269.50	7,112.61	760.76	-5,273.88	5,324.28	0.00	0.00	0.00
13,300.00	90.44	269.50	7,111.85	759.89	-5,373.87	5,423.65	0.00	0.00	0.00
13,400.00	90.44	269.50	7,111.08	759.03	-5,473.87	5,523.02	0.00	0.00	0.00
13,500.00	90.44	269.50	7,110.32	758.16	-5,573.86	5,622.38	0.00	0.00	0.00
13,600.00	90.44	269.50	7,109.56	757.29	-5,673.85	5,721.75	0.00	0.00	0.00
13,700.00	90.44	269.50	7,108.80	756.43	-5,773.85	5,821.12	0.00	0.00	0.00
13,800.00	90.44	269.50	7,108.03	755.56	-5,873.84	5,920.48	0.00	0.00	0.00
13,900.00	90.44	269.50	7,107.27	754.69	-5,973.83	6,019.85	0.00	0.00	0.00
14,000.00	90.44	269.50	7,106.51	753.83	-6,073.83	6,119.22	0.00	0.00	0.00
14,100.00	90.44	269.50	7,105.75	752.96	-6,173.82	6,218.59	0.00	0.00	0.00
14,200.00	90.44	269.50	7,104.98	752.09	-6,273.81	6,317.95	0.00	0.00	0.00
14,300.00	90.44	269.50	7,104.22	751.23	-6,373.81	6,417.32	0.00	0.00	0.00
14,400.00	90.44	269.50	7,103.46	750.36	-6,473.80	6,516.69	0.00	0.00	0.00
14,500.00	90.44	269.50	7,102.70	749.49	-6,573.79	6,616.06	0.00	0.00	0.00
14,600.00	90.44	269.50	7,101.93	748.63	-6,673.79	6,715.42	0.00	0.00	0.00
14,700.00	90.44	269.50	7,101.17	747.76	-6,773.78	6,814.79	0.00	0.00	0.00
14,800.00	90.44	269.50	7,100.41	746.89	-6,873.77	6,914.16	0.00	0.00	0.00
14,900.00	90.44	269.50	7,099.64	746.03	-6,973.77	7,013.53	0.00	0.00	0.00
14,984.51	90.44	269.50	7,099.00	745.29	-7,058.27	7,097.50	0.00	0.00	0.00
Bottom of Production @ 14984.51ft									

# Hewlett-Packard

## Planning Report

<b>Database:</b>	EDM 5000.14 Single User Db	<b>Local Co-ordinate Reference:</b>	Well GOLDEN EAGLE 28N-1B-M
<b>Company:</b>	SRC ENERGY	<b>TVD Reference:</b>	RKB = 4' @ 4875.00usft (IKON 12)
<b>Project:</b>	WELD COUNTY (NAD83, TRUE NORTH)	<b>MD Reference:</b>	RKB = 4' @ 4875.00usft (IKON 12)
<b>Site:</b>	6N-66W-06 GOLDEN EAGLE 1-6 PAD	<b>North Reference:</b>	True
<b>Well:</b>	GOLDEN EAGLE 28N-1B-M	<b>Survey Calculation Method:</b>	Minimum Curvature
<b>Wellbore:</b>	Wellbore #1		
<b>Design:</b>	Design #1		

Planned Survey									
Measured Depth (usft)	Inclination (°)	Azimuth (°)	Vertical Depth (usft)	+N/-S (usft)	+E/-W (usft)	Vertical Section (usft)	Dogleg Rate (°/100usft)	Build Rate (°/100usft)	Turn Rate (°/100usft)
15,000.00	90.44	269.50	7,098.88	745.16	-7,073.76	7,112.89	0.00	0.00	0.00
15,084.51	90.44	269.50	7,098.24	744.43	-7,158.27	7,196.87	0.00	0.00	0.00
TD Well @ 15084.51ft									

Casing Points					
Measured Depth (usft)	Vertical Depth (usft)	Name	Casing Diameter (")	Hole Diameter (")	
1,823.60	1,800.00	9 5/8"	9-5/8	13-1/2	
7,641.42	7,155.00	Production Zone Top	5-1/2	8-1/2	

Plan Annotations				
Measured Depth (usft)	Vertical Depth (usft)	Local Coordinates		Comment
		+N/-S (usft)	+E/-W (usft)	
200.00	200.00	0.00	0.00	Begin Nudge @ 200.00ft
757.00	753.50	33.45	42.36	Hold Tangent @ 757.00ft
6,539.03	6,426.58	725.83	919.06	KOP @ 6539.03ft :: DLS = 9°/100'
7,641.42	7,155.00	808.94	284.34	End Build @ 7641.42ft
14,984.51	7,099.00	745.29	-7,058.27	Bottom of Production @ 14984.51ft
15,084.51	7,098.24	744.43	-7,158.27	TD Well @ 15084.51ft