



Lat40°, Inc. 6250 W. 10th Street, Unit 2, Greeley, CO 970-515-5294

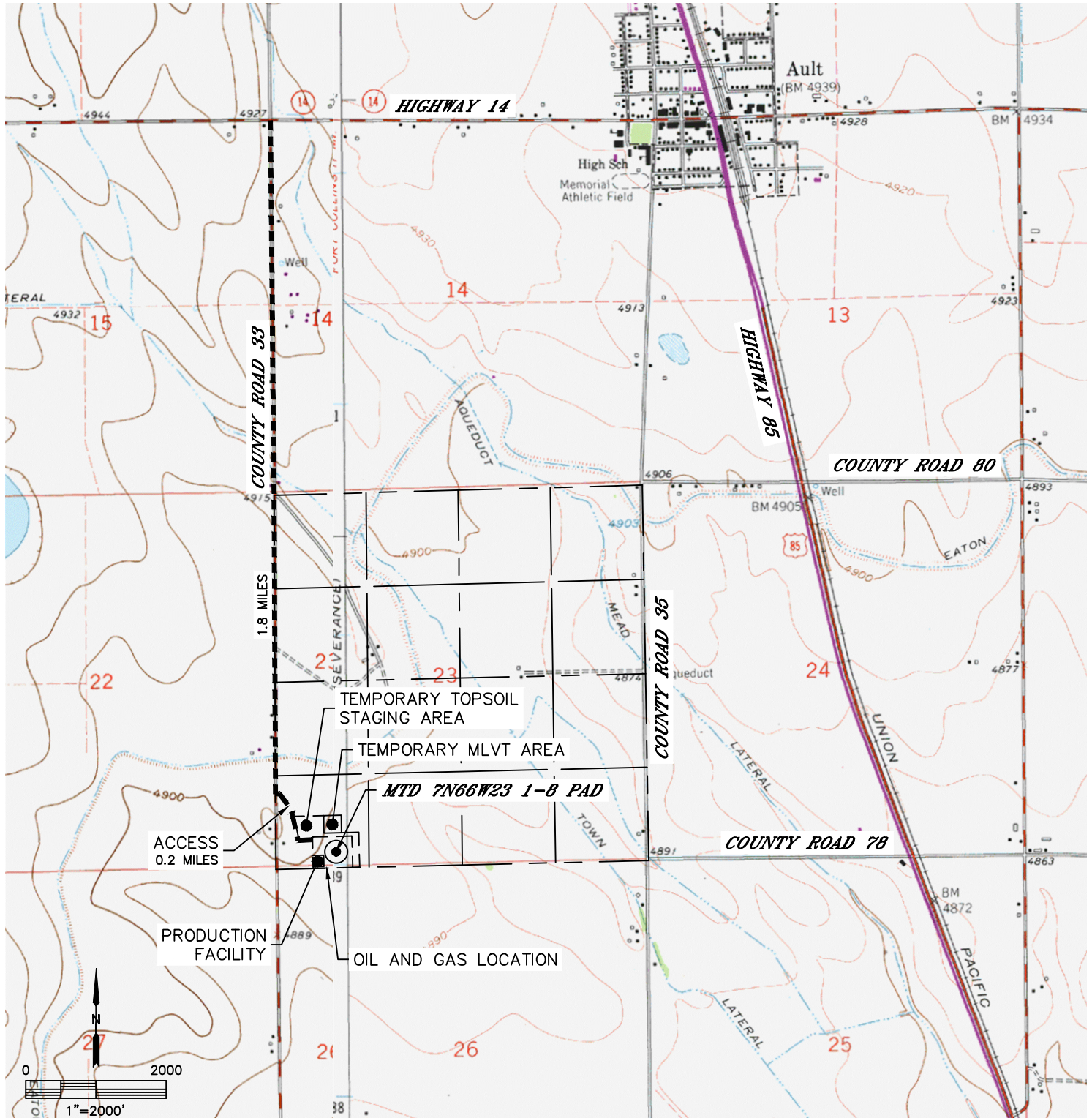
ACCESS ROAD MAP

MTD 7N66W23 1-8 PAD

SECTION: 23
TOWNSHIP: 7N
RANGE: 66W
6TH. P.M.
WELD COUNTY, CO

DRIVING DIRECTIONS TO MTD 7N66W23 1-8 PAD

FROM THE INTERSECTION OF HIGHWAY 14 AND COUNTY ROAD 33, HEAD SOUTH ON COUNTY ROAD 33 FOR 1.8 MILES TO AN EXISTING ACCESS TO THE EAST. THENCE EAST, SOUTHEAST ALONG THE EXISTING ACCESS FOR 0.2 MILES TO THE PROPOSED DRILL PAD AND PRODUCTION FACILITY.





Lat40°, Inc. 6250 W. 10th Street, Unit 2, Greeley, CO 970-515-5294

ACCESS ROAD MAP

MTD 7N66W23 1-8 PAD

SECTION: 23
TOWNSHIP: 7N
RANGE: 66W
6TH. P.M.
WELD COUNTY, CO

