

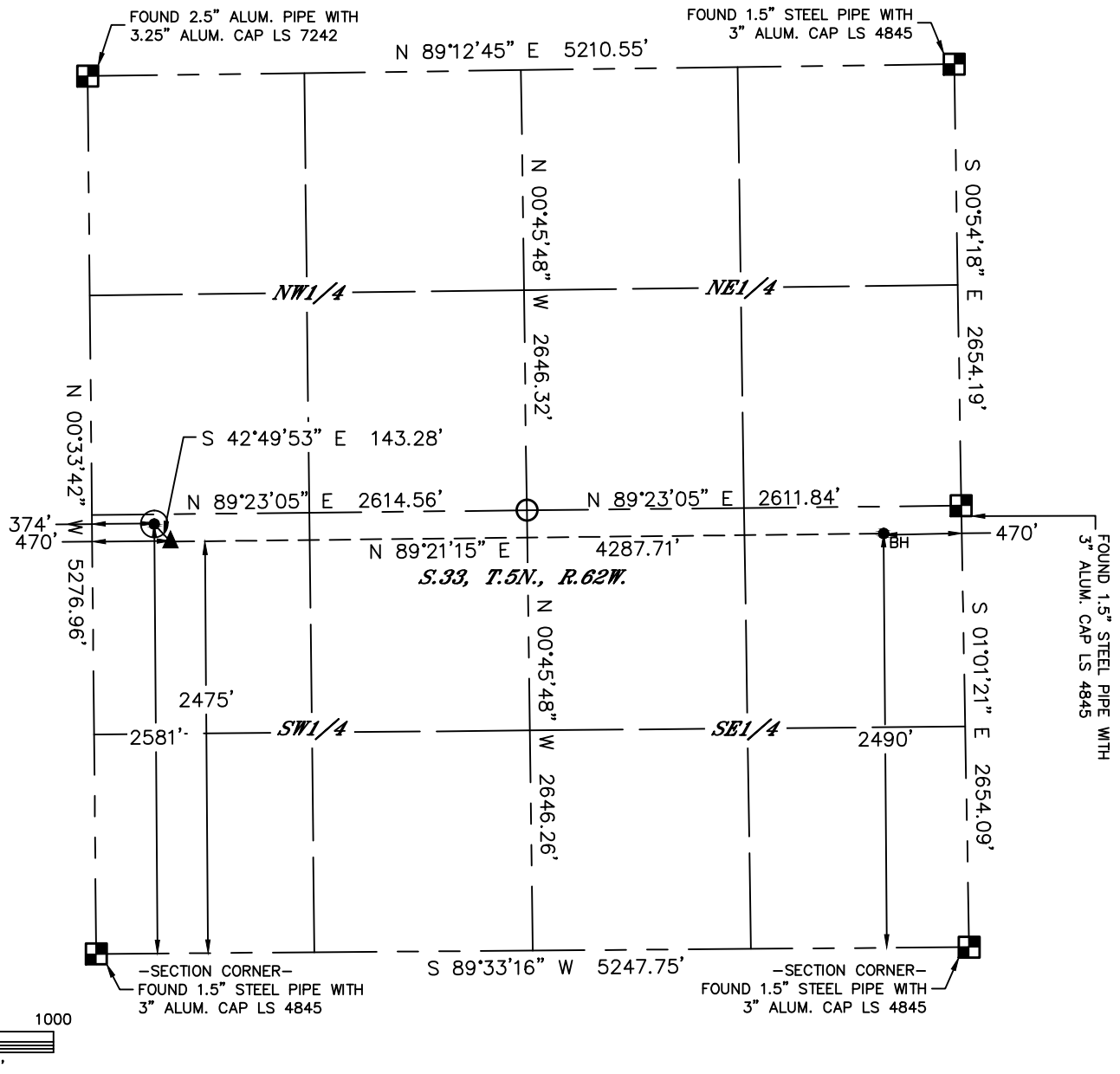


Lat40°, Inc. 6250 W. 10th Street, Unit 2, Greeley, CO 970-515-5294

# WELL LOCATION CERTIFICATE

ANTELOPE C13-W43-33HNC

SECTION: 33  
TOWNSHIP: 5N  
RANGE: 62W  
6TH. P.M.  
WELD COUNTY, CO



CLIENT: BONANZA CREEK ENERGY						LANDMAN: JOSEPH SCHULTZ			
INSTRUMENT OPERATOR: DUNCAN HOTCHKISS						SURVEY DATE: 8/2/2018		SURFACE USE: RANGELAND	
SHL FOOTAGE				SHL LAT°	SHL LONG°	SHL PDOP	SHL ELEV (FT.)	SHL 1/4/1/4	SHL S-T-R
2581	FSL	374	FWL	40.35602	-104.33694	1.8	4580	NWSW	33-5-62

BHL FOOTAGE				BHL LAT °	BHL LONG °	BHL S-T-R	EP LAT °	EP LONG °	EP S-T-R
2490	FSL	470	FEL	40.35571	-104.32121	33-5-62	40.35573	-104.33659	33-5-62

## LEGEND

- = ALIQUOT MONUMENT AS DESCRIBED
- = CALCULATED POSITION
- = SURFACE HOLE LOCATION (SHL)
- ▲ = ENTRY POINT LOCATION (EP)
- ◆ = TOP OF PRODUCTION ZONE (TPZ)
- = BOTTOM HOLE LOCATION (BHL)

## NOTE:

- 1) Bearings shown are Grid Bearings of the Colorado State Plane Coordinate System, North Zone, North American Datum 1983. The lineal dimensions as contained herein are based upon the "U.S. Survey Foot."
- 2) Distances to section lines measured at 90 degrees from said section lines.
- 3) Ground elevations are based on an observed GPS elevation (NAVD 1988 DATUM).
- 4) Latitude and Longitude shown are (NAD 83 DATUM).
- 5) IMPROVEMENTS: See LOCATION DRAWING for all visible improvements within 500' of oil and gas location.
- 6) This map does not represent a boundary survey.



SHEET 1 OF 1

Kyle E. Rutz—On behalf of Lat40°, Inc.  
Colorado Licensed Professional  
Land Surveyor No. 38307  
DATE: 9/28/2018  
PROJECT#: 2018123