



Lat40°, Inc. 6250 W. 10th Street, Unit 2, Greeley, CO 970-515-5294

ACCESS ROAD MAP

ANTELOPE C-33 PAD

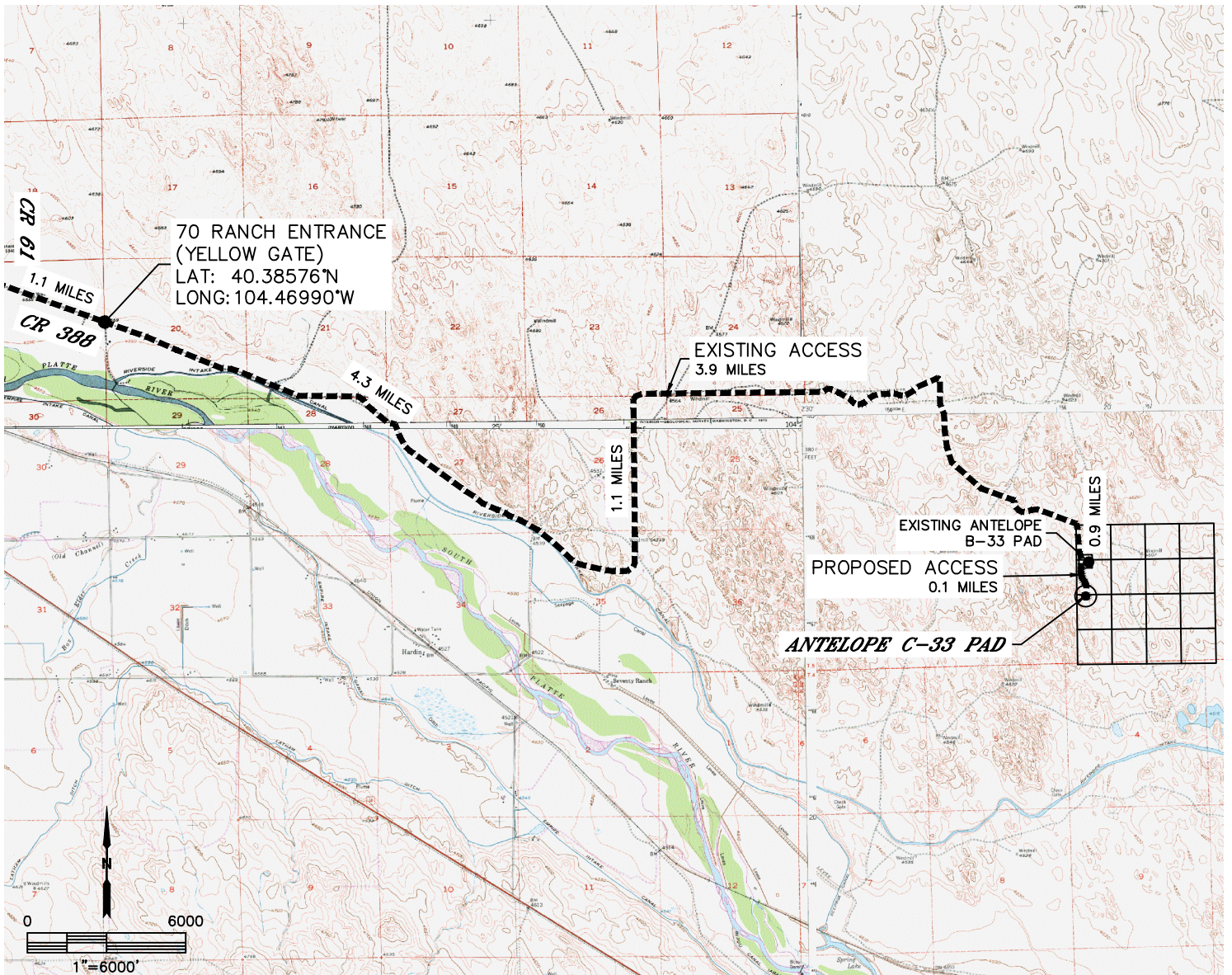
SECTION: 33
TOWNSHIP: 5N
RANGE: 62W
6TH. P.M.
WELD COUNTY, CO

PROPOSED WELLS:

- ANTELOPE 14-44-33HNC
- ANTELOPE D14-X44-33HNB
- ANTELOPE D13-X43-33HNC
- ANTELOPE 13-43-33HNB
- ANTELOPE C13-W43-33HNC
- ANTELOPE C12-W42-33HNB
- ANTELOPE B12-V42-33HNC

DRIVING DIRECTIONS TO ANTELOPE C-33 PAD

FROM THE INTERSECTION OF COUNTY ROAD 61 AND COUNTY ROAD 388, DRIVE SOUTHEAST ON COUNTY ROAD 388 FOR 1.1 MILES TO THE 70 RANCH MAIN ACCESS (YELLOW GATE), CONTINUE SOUTHEAST ALONG MAIN ACCESS ROAD FOR 4.3 MILES, DRIVE NORTH ALONG SAID MAIN ACCESS FOR 1.3 MILES AND EAST ALONG SAID MAIN ACCESS ROAD FOR 3.9 MILES, CONTINUE SOUTH 0.9 MILES TO THE ANTELOPE B-33 PAD, CONTINUE SOUTH 0.9 MILES TO THE ANTELOPE C-33 PAD ON THE SOUTH SIDE OF THE ROAD.





Lat40°, Inc. 6250 W. 10th Street, Unit 2, Greeley, CO 970-515-5294

ACCESS ROAD MAP

ANTELOPE C-33 PAD

SECTION: 33
TOWNSHIP: 5N
RANGE: 62W
6TH. P.M.
WELD COUNTY, CO

