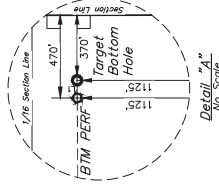
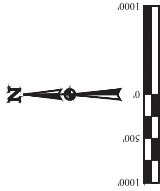
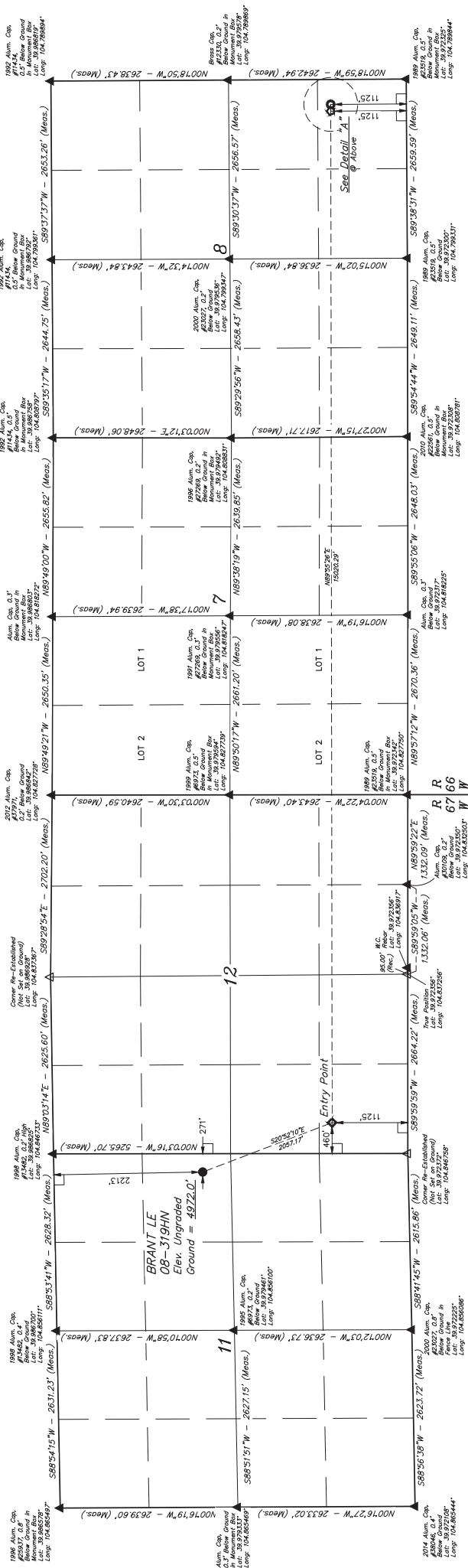


T1S, R67W, 6th P.M.

GREAT WESTERN OPERATING COMPANY  
BRANT LE 08-319HN  
SE 1/4 NE 1/4, SECTION 11, T1S, R67W, 6th P.M.  
BASIS OF BEARINGS: NATIONAL EARTHQUAKE  
BASIS OF ELEVATION: NAVD 83  
USGS COOPERATIVE BASE NETWORK CONTROL STATION  
DESIGNATION "R 5 5005" NGS DATA SHEET LISTS THE NAVD 88  
ELEVATION AS BEING 300.9 FEET.



LINE TABLE		
LINE DIRECTION LENGTH		
LI	N89°55'26"E	100.00'



- LEGEND:
- = 90° SYMBOL
  - = PROPOSED WELLHEAD
  - = ENTRY POINT
  - = TARGET BOTTOM HOLE
  - △ = SECTION CORNERS LOCATED (NAD 83)
  - △ = SECTION CORNERS RE-ESTABLISHED (Not Set on Ground, NAD 83)

NAD 83 SURFACE LOCATION		NAD 83 ENTRY POINT		NAD 83 (RANGE T) BOTTOM HOLE	
UTM	18QUB01.20	UTM	18QUB01.20	UTM	18QUB01.20
Easting	104,847,111	Easting	104,847,111	Easting	104,847,111
Northing	39,583,137	Northing	39,583,137	Northing	39,583,137
Latitude	39°58'30.75" (104.847111)	Latitude	39°58'30.75" (104.847111)	Latitude	39°58'30.75" (104.847111)
Longitude	-104°50'49.85" (104.847111)	Longitude	-104°50'49.85" (104.847111)	Longitude	-104°50'49.85" (104.847111)

THIS IS TO CERTIFY THAT THE ABOVE INFORMATION WAS PREPARED BY THE SURVEYOR AND THAT THE SAME ARE TRUE AND CORRECT TO THE BEST OF HIS KNOWLEDGE AND BELIEF.

CERTIFIED AND REGISTERED  
JULY 1, 2008  
STATE OF CALIFORNIA  
REGISTERED LAND SURVEYOR  
STATE OF CALIFORNIA  
JULY 1, 2008

REV. 3 06-14-18 K.M.R. (SL MOVES)

UTMAH  
UTMAH SURVEYING, INC.  
Vernal, UT 84078 • (435) 786-1017

STATION: 18QUB01.20  
DRAWN BY: J.M.R.  
DATE: 06-14-18  
SCALE: 1\"/>

WELL LOCATION PLAT