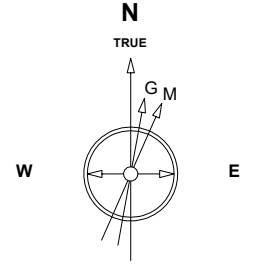


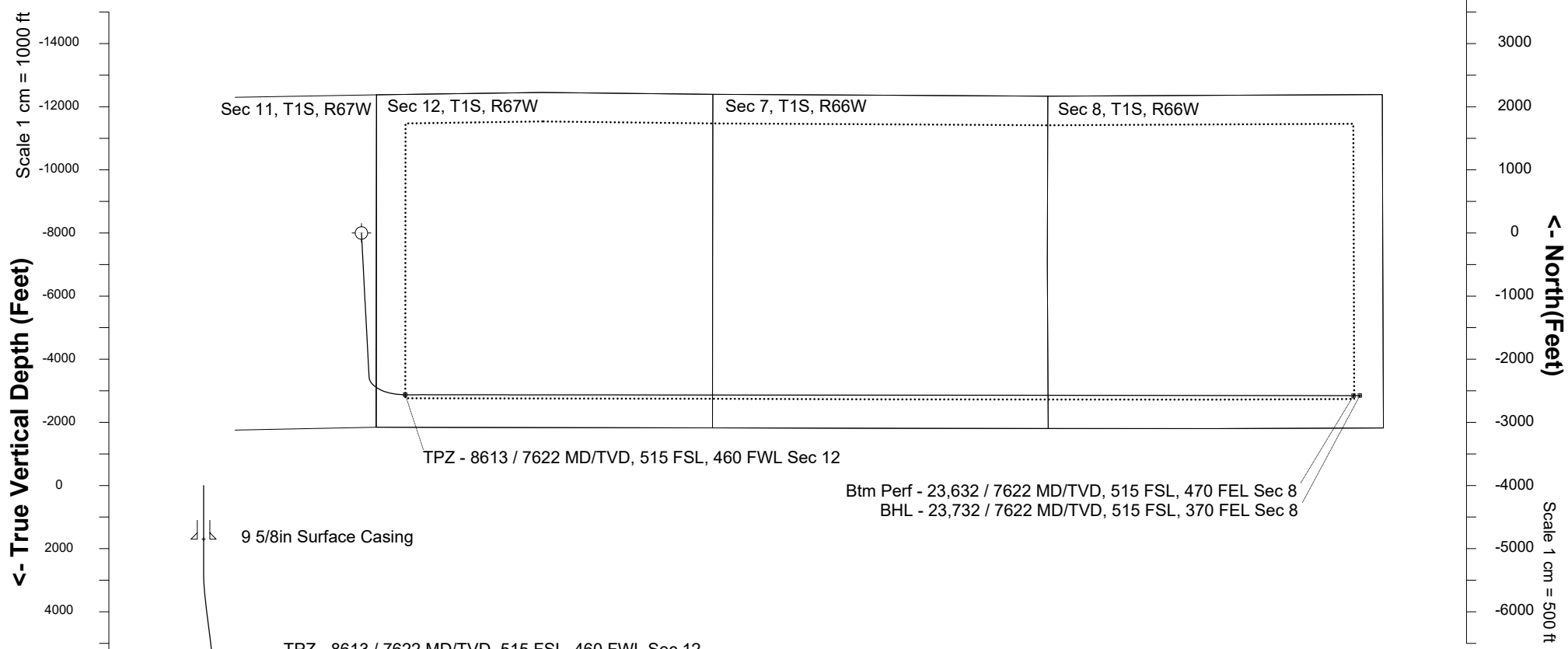
# Great Western Operating Company, LLC

Created by admin  
 Date plotted 25-Jan-2019  
 Plot reference is Brant LE 08-362HC (PWB).  
 Ref wellpath is Brant LE 08-362HC (PWP#1).  
 Coordinates are in Feet reference S12 - Brant LE 08-362HC.  
 True Vertical Depths are reference Rig Datum.  
 Measured Depths are reference Rig Datum.  
 Rig Datum: Planned Datum #1  
 Rig Datum to Mean Sea Level: 4992.00 ft.  
 Plot North is aligned to TRUE North.

<b>Location</b>	Colorado	<b>Slot</b>	S12 - Brant LE 08-362HC
<b>Field</b>	Wattenburg	<b>Well</b>	Brant LE 08-362HC
<b>Installation</b>	Brant	<b>Wellbore</b>	Brant LE 08-362HC (PWB)



Apr-14-2017  
 IGRF Model [1900.0-2020.0] Dip: 66.51 deg Field: 52184.6 nT  
 Lat: N39 58 49.6308 Long: W104 50 52.6468 Elev: 4972.00 ft  
 Magnetic North is 8.24 deg East of TRUE North  
 To correct azimuth from Magnetic to TRUE add 8.24 deg



### WELL PROFILE DATA

Point	MD	Inc	Azi	TVD	North	East	deg/100ft	V. Sect
Tie on	0.00	0.00	0.00	0.00	S 0.00	W 0.00		0.00
KOP	2667.00	0.00	176.98	2667.00	S 0.00	W 0.00	0.00	0.00
End of Build	3667.05	30.00	176.98	3621.97	S 255.54	E 13.50	3.00	54.40
End of Hold	7728.16	30.00	176.98	7138.94	S 2283.36	E 120.60	0.00	486.12
Target TPZ - ...Sec 12	8612.79	90.00	90.05	7622.00	S 2562.37	E 693.11	10.00	1096.03
Target Btm Pe... Sec 8	23632.24	90.00	90.05	7622.00	S 2575.63	E 15712.55	0.00	15922.25
End of Turn	23632.91	90.00	89.96	7622.00	S 2575.63	E 15713.23	13.00	15922.91
T.D. & Target BHL...c 8	23732.02	90.00	89.96	7622.00	S 2575.57	E 15812.33	0.00	16020.72

Scale 1 cm = 1000 ft

Vertical Section (Feet) ->

Azimuth 99.25 with reference 0.00 N, 0.00 E from S12 - Brant LE 08-362HC