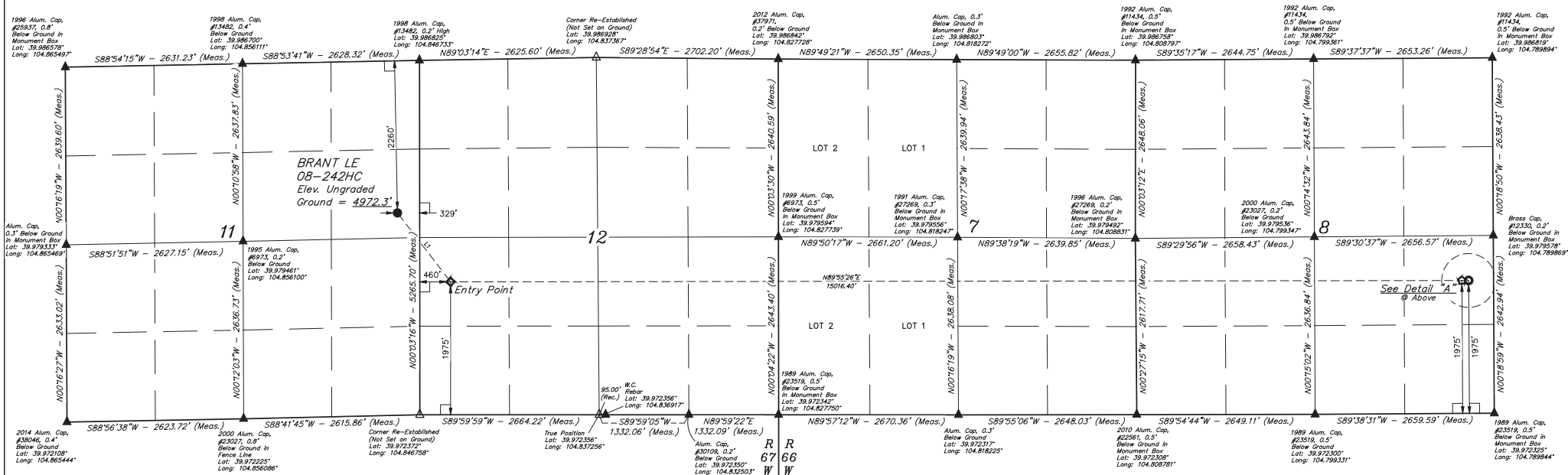
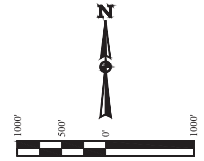
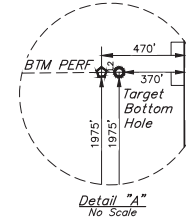


BRANT LE 08-242HC
SE 1/4 NE 1/4, SECTION 11, T1S, R67W, 6th P.M.
ADAMS COUNTY, COLORADO

BASIS OF BEARINGS
BASIS OF ELEVATION

USGS COOPERATIVE BASE NETWORK CONTROL STATION,
DESIGNATION "R 53 5026", NGS DATA SHEET LISTS THE NAVD 88
ELEVATION AS BEING 5028 FEET.

| LINE TABLE | | |
|------------|-------------|----------|
| LINE | DIRECTION | LENGTH |
| L1 | S37°3'54"E | 1293.06' |
| L2 | N89°55'26"E | 100.00' |



- LEGEND:**
- 90° SYMBOL
 - PROPOSED WELLHEAD
 - ENTRY POINT
 - TARGET BOTTOM HOLE
 - BTM PERF
 - △ SECTION CORNERS LOCATED, (NAD 83)
 - △ SECTION CORNERS RE-ESTABLISHED, (Not Set on Ground,) (NAD 83)

R
67
W

CERTIFICATE OF SURVEY
THIS IS TO CERTIFY THAT THE ABOVE IS A TRUE AND CORRECT COPY OF THE ORIGINAL SURVEY MAP AND THAT THE SAME ARE TRUE AND CORRECT IN ALL RESPECTS.
CHAD MEIERS, D.N.
REGISTERED LAND SURVEYOR
STATE OF COLORADO
NO. 2838
EXPIRES 12-31-18

REV. 3 06-14-18 K.M.R. (SL.MOV)

PDOP = 1.2

| NAD 83 (SURFACE LOCATION) | NAD 83 (ENTRY POINT) | NAD 83 (BTM PERF) | NAD 83 (TARGET BOTTOM HOLE) |
|--|--|--|--|
| LATITUDE = 39°58'30.11" (19.980666) | LATITUDE = 39°58'40.05" (19.977792) | LATITUDE = 39°58'39.87" (19.977742) | LATITUDE = 39°58'39.87" (19.977742) |
| LONGITUDE = 104°59'55.50" (104.997616) | LONGITUDE = 104°59'42.39" (104.984108) | LONGITUDE = 104°47'29.84" (104.781339) | LONGITUDE = 104°47'28.36" (104.781183) |
| NAD 27 (SURFACE LOCATION) | NAD 27 (ENTRY POINT) | NAD 27 (BTM PERF) | NAD 27 (TARGET BOTTOM HOLE) |
| LATITUDE = 39°58'30.24" (19.980623) | LATITUDE = 39°58'40.10" (19.977806) | LATITUDE = 39°58'39.92" (19.977750) | LATITUDE = 39°58'39.92" (19.977750) |
| LONGITUDE = 104°59'50.59" (104.947387) | LONGITUDE = 104°59'40.45" (104.844578) | LONGITUDE = 104°47'27.64" (104.781011) | LONGITUDE = 104°47'26.36" (104.780656) |

UELTS, LLC
Corporate Office • 85 South 200 East
Vernal, UT 84078 • (435) 789-1017

UINTAH
REGISTERED LAND SURVEYOR
NO. 2838
STATE OF COLORADO

CHAD MEIERS, D.N.
K.B.

SCALE:
1" = 1000'

WELL LOCATION PLAT