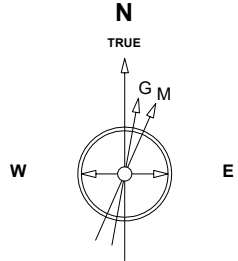


# Great Western Operating Company, LLC

<b>Location</b>	Colorado	<b>Slot</b>	S03 - Brant LE 08-239HNX
<b>Field</b>	Wattenburg	<b>Well</b>	Brant LE 08-239HNX
<b>Installation</b>	Brant	<b>Wellbore</b>	Brant LE 08-239HNX (PWB)

Created by admin  
 Date plotted 25-Jan-2019  
 Plot reference is Brant LE 08-239HNX (PWB).  
 Ref wellpath is Brant LE 08-239HNX (PWP#1).  
 Coordinates are in Feet reference S03 - Brant LE 08-239HNX.  
 True Vertical Depths are reference Rig Datum.  
 Measured Depths are reference Rig Datum.  
 Rig Datum: Planned Datum #1  
 Rig Datum to Mean Sea Level: 4992.00 ft.  
 Plot North is aligned to TRUE North.



Scale 1 cm = 500 ft

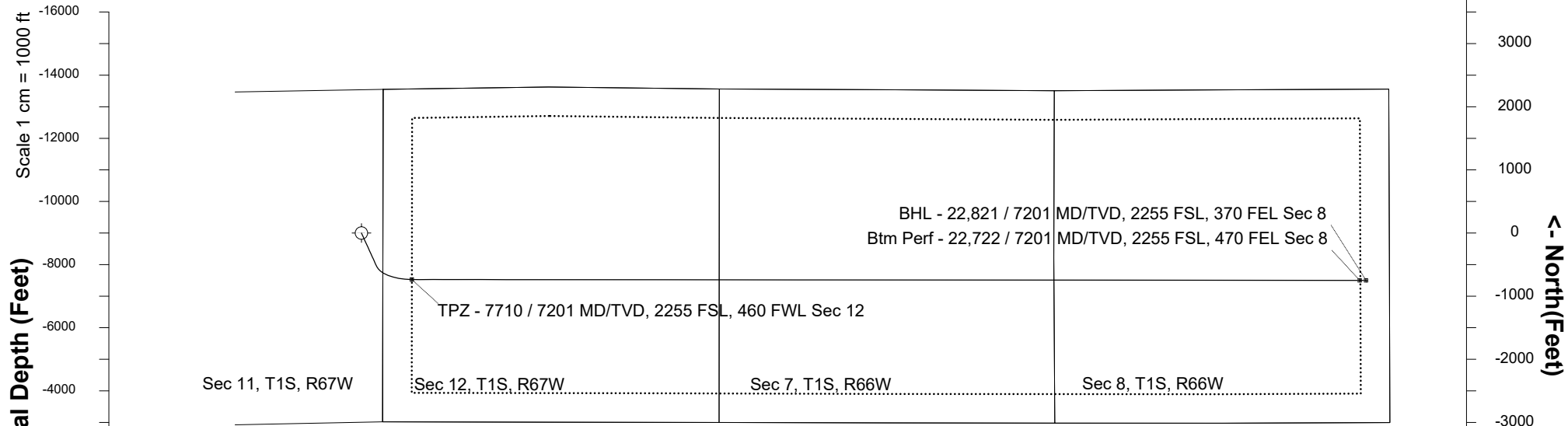
East (Feet) ->



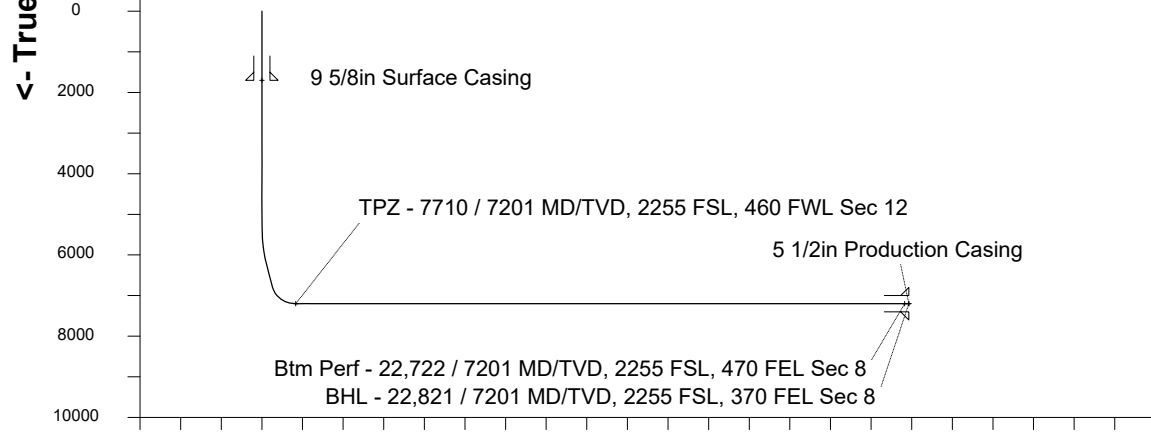
Apr-14-2017  
 IGRF Model [1900.0-2020.0] Dip: 66.51 deg Field: 52184.6 nT  
 Lat: N39 58 49.6308 Long: W104 50 52.6468 Elev: 4972.00 ft  
 Magnetic North is 8.24 deg East of TRUE North  
 To correct azimuth from Magnetic to TRUE add 8.24 deg

Scale 1 cm = 1000 ft

Scale 1 cm = 500 ft



Scale 1 cm = 1000 ft



Scale 1 cm = 1000 ft

Vertical Section (Feet) ->

Azimuth 92.70 with reference 0.00 N, 0.00 E from S03 - Brant LE 08-239HNX

## WELL PROFILE DATA

Point	MD	Inc	Azi	TVD	North	East	deg/100ft	V. Sect
Tie on	0.00	0.00	0.00	0.00	S 0.00	W 0.00		0.00
KOP	5288.50	0.00	155.55	5288.50	S 0.00	W 0.00	0.00	0.00
End of Build	6288.47	30.00	155.55	6243.40	S 232.91	E 105.91	3.00	116.76
End of Hold	6929.96	30.00	155.55	6798.96	S 524.87	E 238.68	0.00	263.12
Target TPZ - ...Sec 12	7710.28	90.00	90.05	7201.00	S 736.57	E 799.00	10.00	832.78
Target Btm Pe... Sec 8	22721.67	90.00	90.05	7201.00	S 749.77	E 15810.38	0.00	15828.15
End of Turn	22722.34	90.00	89.96	7201.00	S 749.77	E 15811.05	13.00	15828.82
T.D. & Target BHL...c 8	22821.44	90.00	89.96	7201.00	S 749.71	E 15910.15	0.00	15927.81