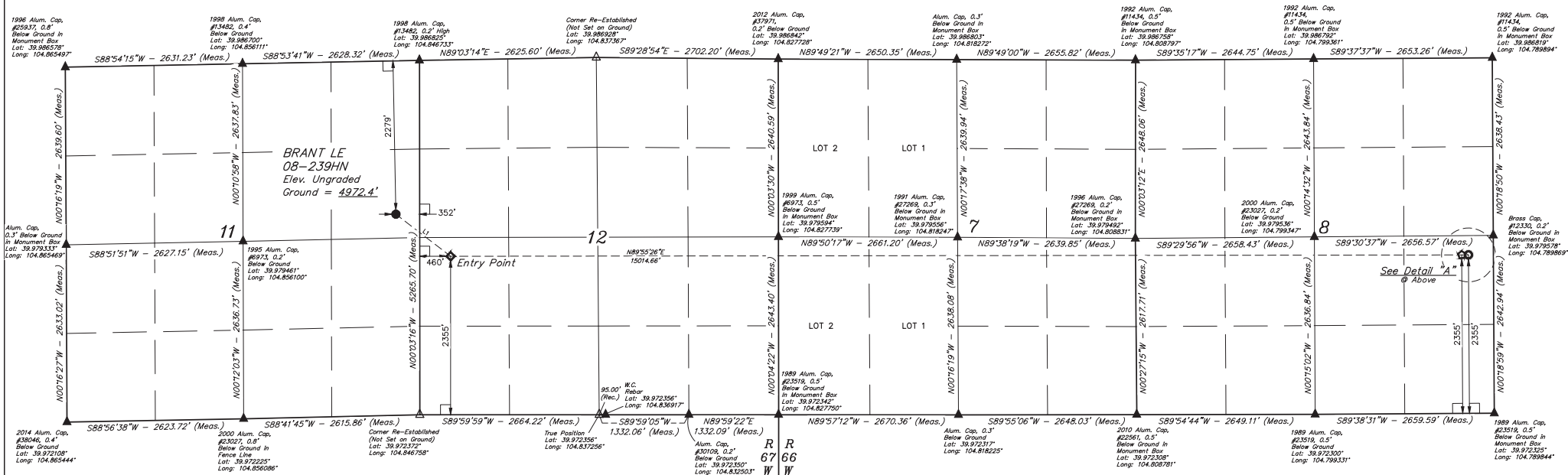
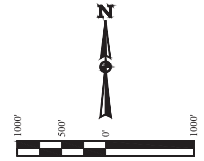
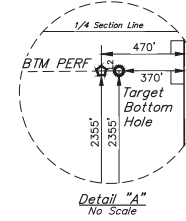


BRANT LE 08-239HN
SE 1/4 NE 1/4, SECTION 11, T1S, R67W, 6th P.M.
ADAMS COUNTY, COLORADO

BASIS OF BEARINGS
BASIS OF ELEVATION

USGS COOPERATIVE BASE NETWORK CONTROL STATION,
DESIGNATION "R 53 5026", NGS DATA SHEET LISTS THE NAVD 88
ELEVATION AS BEING 5028 FEET.

LINE TABLE		
LINE	DIRECTION	LENGTH
L1	S52°25'40"E	1024.72'
L2	N89°58'26"E	100.00'



- LEGEND:**
- 90° SYMBOL
 - PROPOSED WELLHEAD
 - ◆ ENTRY POINT
 - TARGET BOTTOM HOLE
 - BTM PERF.
 - SECTION CORNERS LOCATED, (NAD 83)
 - △ SECTION CORNERS RE-ESTABLISHED, (Not Set on Ground.) (NAD 83)



CERTIFICATE
THIS IS TO CERTIFY THAT THE ABOVE
NOTES OF ACTUAL SURVEY'S MADE
AND THAT THE SAME ARE TRUE AND
KNOWLEDGE AND BELIEF.

REV. 3 06-14-18 K.M.R. (SL.MOV)

PDOP = 1.4			
NAD 83 (SURFACE LOCATION)	NAD 83 (ENTRY POINT)	NAD 83 (BTM PERF)	NAD 83 (TARGET BOTTOM HOLE)
LATITUDE = 39°58'49.99" (19,980,553)	LATITUDE = 39°58'43.80" (19,978,833)	LATITUDE = 39°58'43.62" (19,978,783)	LATITUDE = 39°58'43.62" (19,978,783)
LONGITUDE = 104°50'25.79" (104,847,988)	LONGITUDE = 104°50'42.83" (104,845,066)	LONGITUDE = 104°47'29.86" (104,781,344)	LONGITUDE = 104°47'29.37" (104,781,386)
NAD 27 (SURFACE LOCATION)	NAD 27 (ENTRY POINT)	NAD 27 (BTM PERF)	NAD 27 (TARGET BOTTOM HOLE)
LATITUDE = 39°58'50.05" (19,980,560)	LATITUDE = 39°58'43.86" (19,978,850)	LATITUDE = 39°58'43.68" (19,978,800)	LATITUDE = 39°58'43.68" (19,978,800)
LONGITUDE = 104°50'50.89" (104,847,469)	LONGITUDE = 104°50'40.45" (104,844,578)	LONGITUDE = 104°47'27.65" (104,781,017)	LONGITUDE = 104°47'26.37" (104,780,658)

UELTS, LLC
Corporate Office • 85 South 200 East
Vernal, UT 84078 • (435) 789-1017

UINTAH
REGISTERED PROFESSIONAL LAND SURVEYOR
CHAD MEIERS, D.N.
K.B.

DATE: 06-10-17
SCALE: 1" = 1000'

WELL LOCATION PLAT