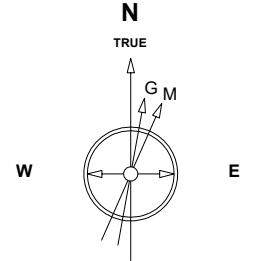


# Great Western Operating Company, LLC

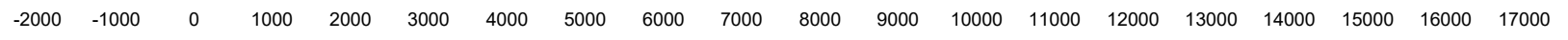
Created by admin  
 Date plotted 25-Jan-2019  
 Plot reference is Brant LE 08-202HN (PWB).  
 Ref wellpath is Brant LE 08-202HN (PWP#1).  
 Coordinates are in Feet reference S01 - Brant LE 08-202HN.  
 True Vertical Depths are reference Rig Datum.  
 Measured Depths are reference Rig Datum.  
 Rig Datum: Planned Datum #1  
 Rig Datum to Mean Sea Level: 4992.00 ft.  
 Plot North is aligned to TRUE North.

<b>Location</b>	Colorado	<b>Slot</b>	S01 - Brant LE 08-202HN
<b>Field</b>	Wattenburg	<b>Well</b>	Brant LE 08-202HN
<b>Installation</b>	Brant	<b>Wellbore</b>	Brant LE 08-202HN (PWB)



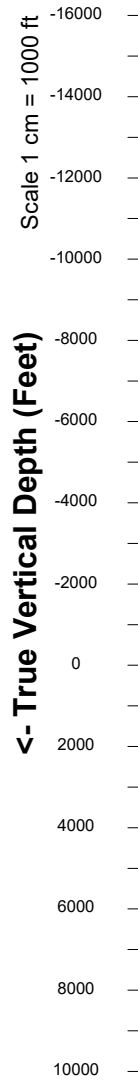
Scale 1 cm = 500 ft

East (Feet) ->

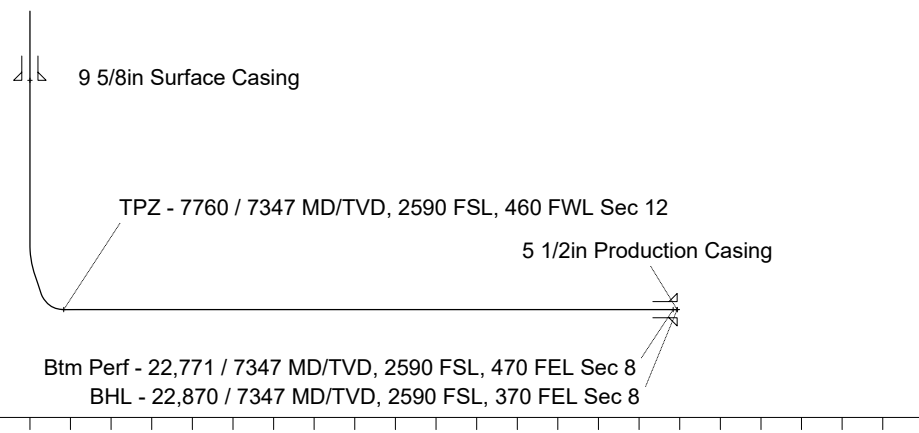
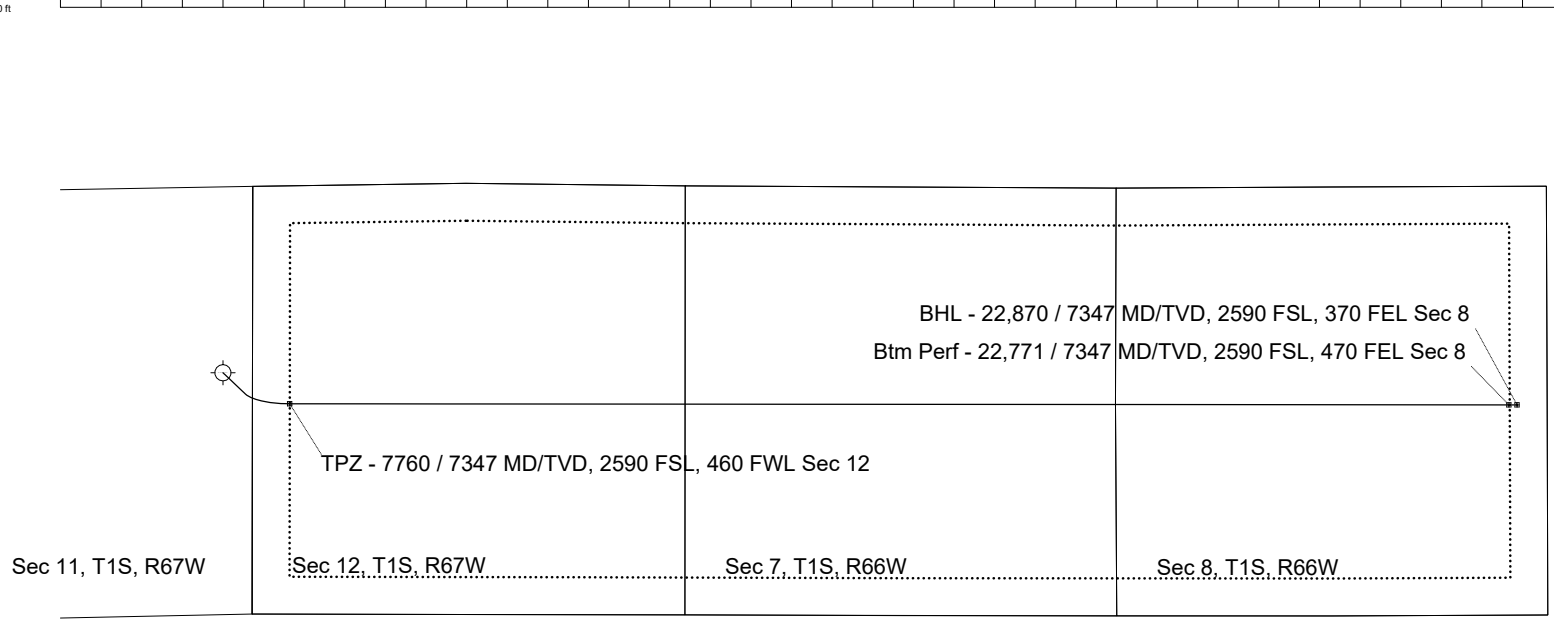


Apr-14-2017  
 IGRF Model [1900.0-2020.0] Dip: 66.51 deg Field: 52184.6 nT  
 Lat: N39 58 49.6308 Long: W104 50 52.6468 Elev: 4972.00 ft  
 Magnetic North is 8.24 deg East of TRUE North  
 To correct azimuth from Magnetic to TRUE add 8.24 deg

Scale 1 cm = 1000 ft



Scale 1 cm = 500 ft



Scale 1 cm = 1000 ft

Vertical Section (Feet) ->

Azimuth 91.42 with reference 0.00 N, 0.00 E from S01 - Brant LE 08-202HN

## WELL PROFILE DATA

Point	MD	Inc	Azi	TVD	North	East	deg/100ft	V. Sect
Tie on	0.00	0.00	0.00	0.00	S 0.00	W 0.00		0.00
KOP	5721.00	0.00	133.44	5721.00	S 0.00	W 0.00	0.00	0.00
End of Build	6543.66	24.68	133.44	6518.45	S 119.96	E 126.67	3.00	129.60
End of Hold	7036.64	24.68	133.44	6966.40	S 261.50	E 276.13	0.00	282.53
Target TPZ - ...Sec 12	7760.01	90.00	90.05	7347.00	S 382.12	E 821.97	10.00	831.19
Target Btm Pe... Sec 8	22770.64	90.00	90.05	7347.00	S 395.31	E 15832.59	0.00	15837.52
End of Turn	22771.31	90.00	89.96	7347.00	S 395.31	E 15833.26	13.00	15838.20
T.D. & Target BHL...c 8	22870.12	90.00	89.96	7347.00	S 395.24	E 15932.08	0.00	15936.98