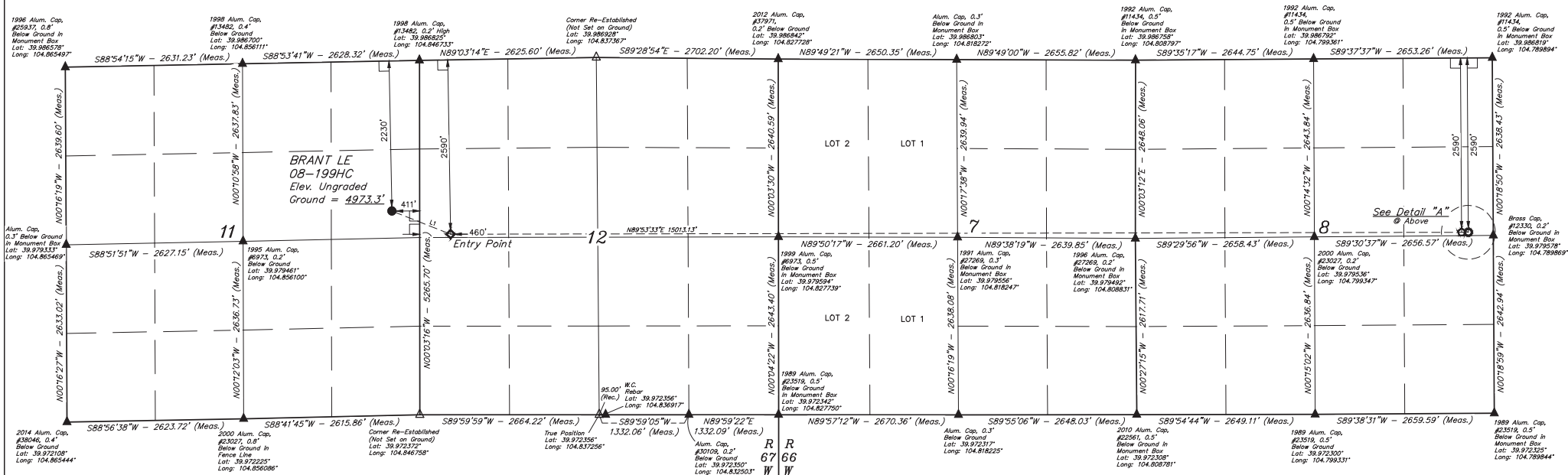
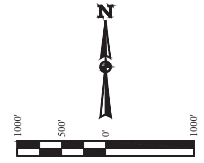
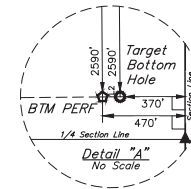


LINE TABLE		
LINE	DIRECTION	LENGTH
L1	S88°25'26"E	937.18'
L2	N89°53'33"E	100.00'



- LEGEND:**
- ◻ = 90° SYMBOL
 - = PROPOSED WELLHEAD
 - ⊙ = ENTRY POINT
 - ⊙ = TARGET BOTTOM HOLE
 - ⊙ = BTM PERF
 - ▲ = SECTION CORNERS LOCATED, (NAD 83)
 - △ = SECTION CORNERS RE-ESTABLISHED, (Not Set on Ground.) (NAD 83)

CERTIFICATE OF SURVEY
THIS IS TO CERTIFY THAT THE ABOVE IS A TRUE AND CORRECT COPY OF THE ORIGINAL SURVEY MAP AND THAT THE SAME ARE TRUE AND CORRECT TO THE BEST OF MY KNOWLEDGE AND BELIEF.

CHAD MEIERS, D.N.
REGISTERED LAND SURVEYOR
NO. 2838
STATE OF COLORADO

REV. 3 06-14-18 K.M.R. (SL/MVD)

PDOP = 1.4

NAD 83 (SURFACE LOCATION)	NAD 83 (ENTRY POINT)	NAD 83 (BTM PERF)	NAD 83 (TARGET BOTTOM HOLE)
LATITUDE = 39°58'30.47" (39.980685)	LATITUDE = 39°58'47.04" (39.979733)	LATITUDE = 39°58'46.94" (39.979706)	LATITUDE = 39°58'46.94" (39.979706)
LONGITUDE = -104°50'53.56" (104.848211)	LONGITUDE = -104°50'42.38" (104.845106)	LONGITUDE = -104°47'29.87" (104.781347)	LONGITUDE = -104°47'28.58" (104.78189)
NAD 27 (SURFACE LOCATION)	NAD 27 (ENTRY POINT)	NAD 27 (BTM PERF)	NAD 27 (TARGET BOTTOM HOLE)
LATITUDE = 39°58'30.52" (39.980701)	LATITUDE = 39°58'47.10" (39.979750)	LATITUDE = 39°58'47.00" (39.979722)	LATITUDE = 39°58'47.00" (39.979722)
LONGITUDE = -104°50'51.65" (104.847681)	LONGITUDE = -104°50'40.47" (104.844575)	LONGITUDE = -104°47'27.67" (104.781019)	LONGITUDE = -104°47'26.38" (104.780661)

UELTS, LLC
Corporate Office • 85 South 200 East
Vernal, UT 84078 • (435) 789-1017

UINTAH
REGISTERED LAND SURVEYOR
NO. 2838
STATE OF COLORADO

CHAD MEIERS, D.N.
K.B.

SCALE:
06-10-17
03-08-17
1" = 1000'

WELL LOCATION PLAT