

Apr-14-2017  
IGRF Model [1900-0-2020-0] Dip: 66.51 deg Field: 52184.6 nT  
Lat: N39 58 49.6308 Long: W104 50 52.6488 Elev: 4972.00 ft  
Magnetic North is 8.24 deg East of TRUE North  
To correct azimuth from Magnetic to TRUE add 8.24 deg

Great Western Operating Company, LLC					
Location	Colorado	Slot	N02 - Brant LE 08-162HNX		
Field	Wattenburg	Well	Brant LE 08-162HNX		
Installation	Brant	Wellbore	Brant LE 08-162HNX (PWB)		

Created by	admin
Date plotted	25-Jan-2019
Plot reference is Brant LE 08-162HNX (PWB).	
Ref wellpath is Brant LE 08-162HNX (PWP#1).	
Coordinates are in Feet reference N02 - Brant LE 08-162HNX.	
True Vertical Depths are reference Rig Datum.	
Measured Depths are reference Rig Datum.	
Rig Datum: Planned Datum #1	
Rig Datum to Mean Sea Level: 4992.00 ft.	
Plot North is aligned to TRUE North.	

Scale 1 cm = 500 ft

East (Feet) ->

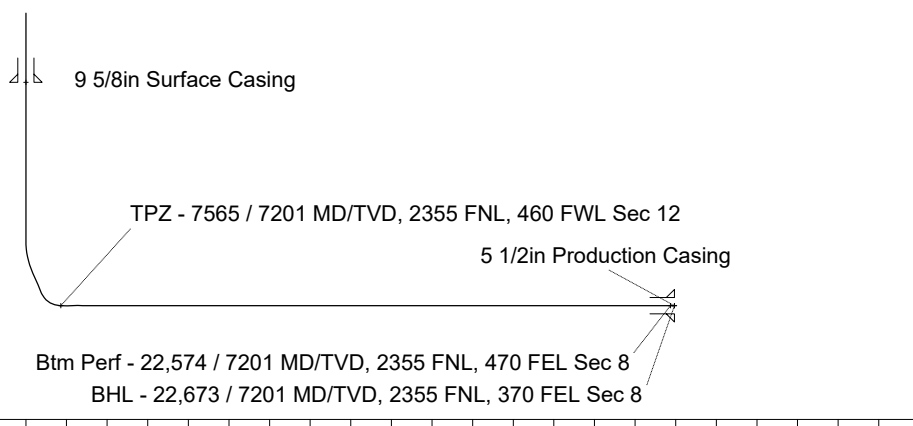
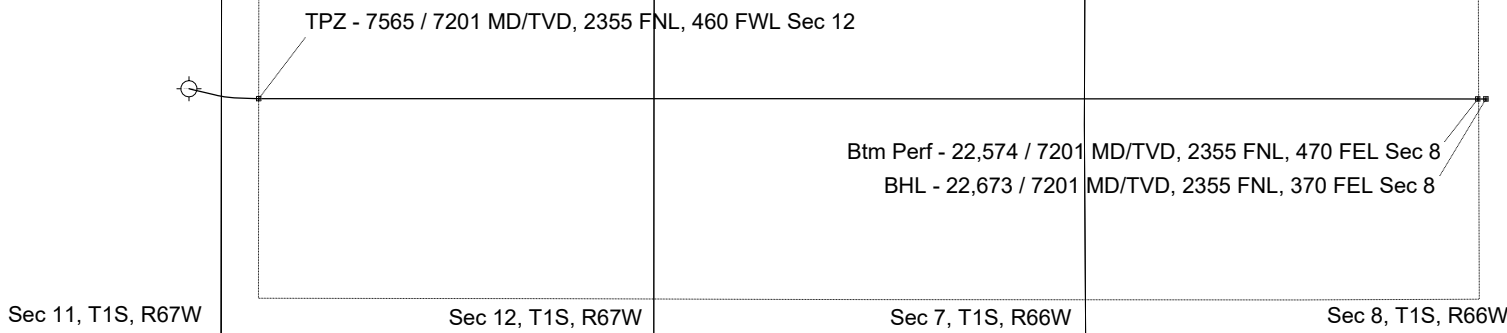
-2000 -1000 0 1000 2000 3000 4000 5000 6000 7000 8000 9000 10000 11000 12000 13000 14000 15000 16000 17000

<- True Vertical Depth (Feet)

Scale 1 cm = 1000 ft

<- North(Feet)

Scale 1 cm = 500 ft



Scale 1 cm = 1000 ft

Vertical Section (Feet) ->

Azimuth 90.45 with reference 0.00 N, 0.00 E from N02 - Brant LE 08-162HNX

## WELL PROFILE DATA

Point	MD	Inc	Azi	TVD	North	East	deg/100ft	V. Sect
Tie on	0.00	0.00	0.00	0.00	S 0.00	W 0.00		0.00
KOP	5600.00	0.00	103.21	5600.00	S 0.00	W 0.00	0.00	0.00
End of Build	6396.52	23.90	103.21	6373.63	S 37.42	E 159.37	3.00	159.66
End of Hold	6958.18	23.90	103.21	6887.15	S 89.42	E 380.86	0.00	381.56
Target TPZ - ...Sec 12	7565.21	90.00	90.02	7201.00	S 121.29	E 859.51	11.00	860.44
Target Btm Pe... Sec 8	22573.95	90.00	90.02	7201.00	S 125.35	E 15868.25	0.00	15868.74
End of Turn	22578.49	90.00	90.61	7201.00	S 125.37	E 15872.79	13.00	15873.29
T.D. & Target BHL...c 8	22673.44	90.00	90.61	7201.00	S 126.38	E 15967.73	0.00	15968.23