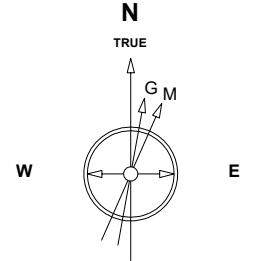


Great Western Operating Company, LLC

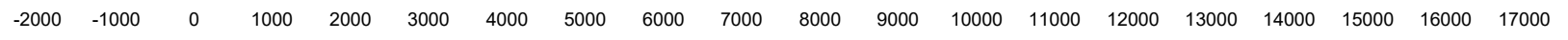
Created by admin
 Date plotted 25-Jan-2019
 Plot reference is Brant LE 08-159HC (PWB).
 Ref wellpath is Brant LE 08-159HC (PWP#1).
 Coordinates are in Feet reference N04 - Brant LE 08-159HC.
 True Vertical Depths are reference Rig Datum.
 Measured Depths are reference Rig Datum.
 Rig Datum: Planned Datum #1
 Rig Datum to Mean Sea Level: 4992.00 ft.
 Plot North is aligned to TRUE North.

Location	Colorado	Slot	N04 - Brant LE 08-159HC
Field	Wattenburg	Well	Brant LE 08-159HC
Installation	Brant	Wellbore	Brant LE 08-159HC (PWB)



Scale 1 cm = 500 ft

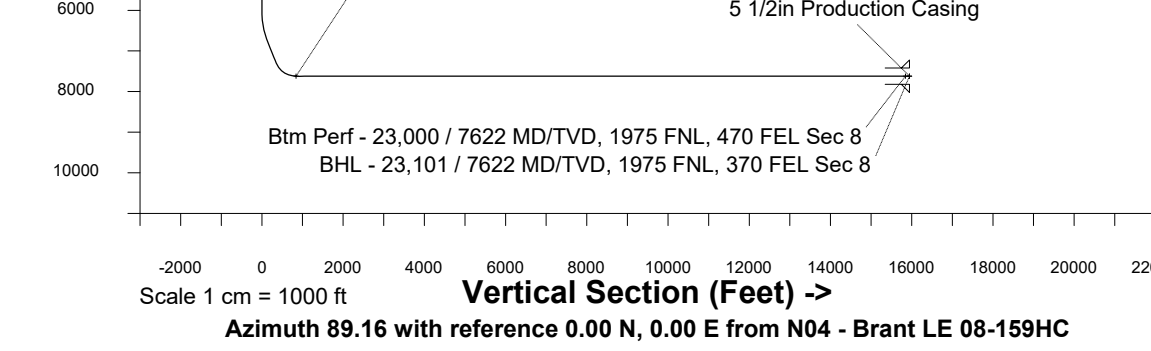
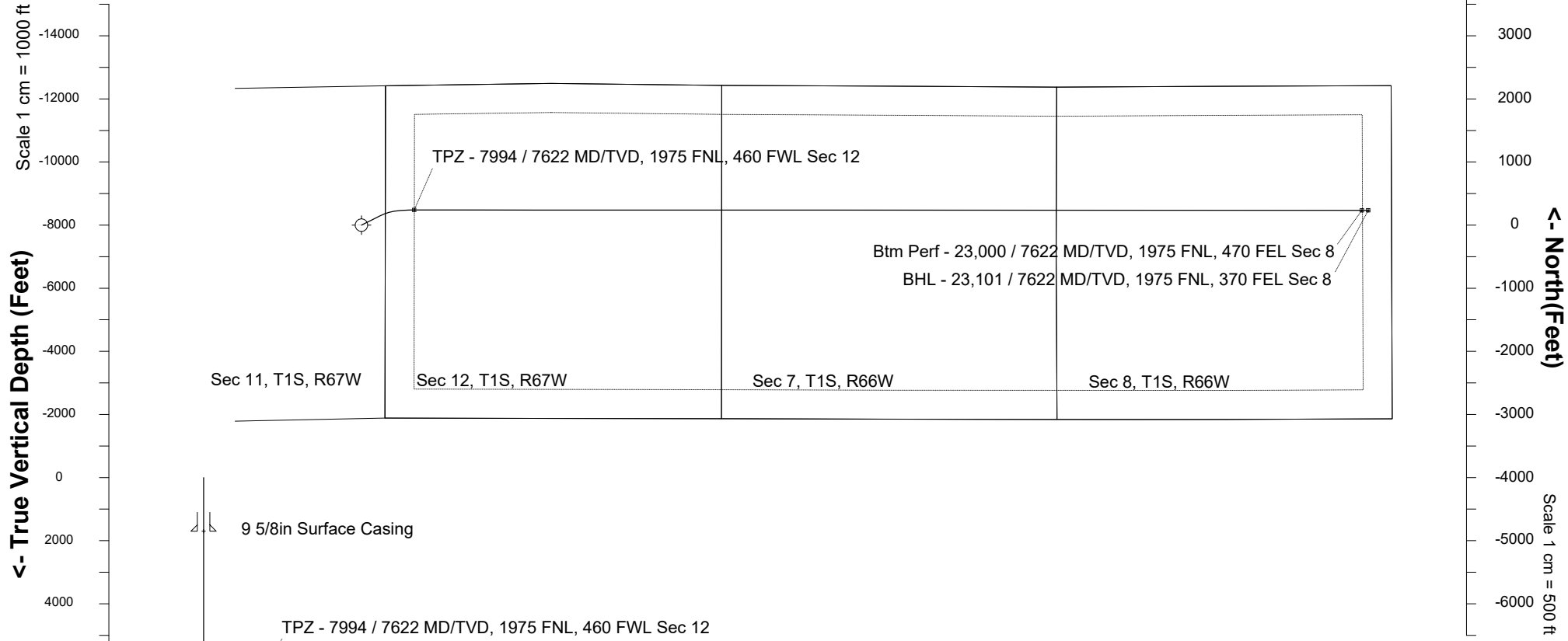
East (Feet) ->



Apr-14-2017
 IGRF Model [1900.0-2020.0] Dip: 66.51 deg Field: 52184.6 nT
 Lat: N39 58 49.6308 Long: W104 50 52.6468 Elev: 4972.00 ft
 Magnetic North is 8.24 deg East of TRUE North
 To correct azimuth from Magnetic to TRUE add 8.24 deg

Scale 1 cm = 1000 ft

Scale 1 cm = 500 ft



WELL PROFILE DATA

Point	MD	Inc	Azi	TVD	North	East	deg/100ft	V. Sect
Tie on	0.00	0.00	0.00	0.00	S 0.00	W 0.00		0.00
KOP	6019.00	0.00	63.60	6019.00	S 0.00	W 0.00	0.00	0.00
End of Build	6831.43	24.37	63.60	6807.15	N 75.68	E 152.46	3.00	153.56
End of Hold	7372.62	24.37	63.60	7300.10	N 174.99	E 352.50	0.00	355.03
Target TPZ - ...Sec 12	7993.62	90.00	90.02	7622.00	N 239.71	E 836.51	11.00	839.95
Target Btm Pe... Sec 8	23000.45	90.00	90.02	7622.00	N 234.55	E 15843.34	0.00	15845.08
End of Turn	23000.89	90.00	89.96	7622.00	N 234.55	E 15843.78	13.00	15845.51
T.D. & Target BHL...c 8	23101.06	90.00	89.96	7622.00	N 234.61	E 15943.95	0.00	15945.68