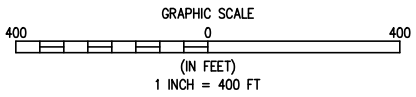
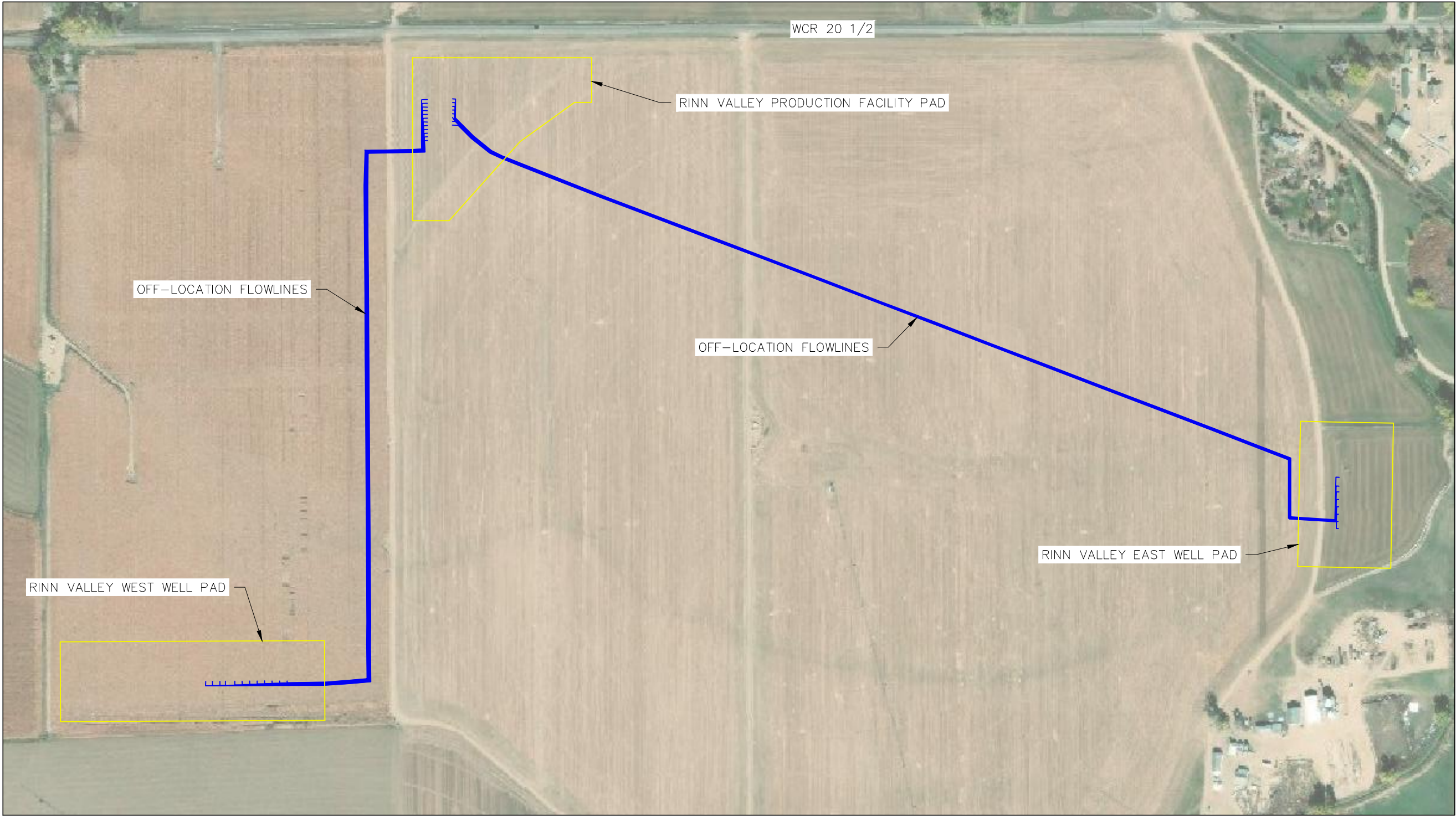


OFF-LOCATION FLOWLINE LAYOUT DRAWING

NW1/4 SW1/4 SECTION 17, TOWNSHIP 2 NORTH, RANGE 68 WEST, 6TH P.M.



LEGEND

- FLOWLINE
- PAD LIMITS



407 S LINCOLN AVENUE, SUITE 405 • LOVELAND, COLORADO 80537
P: 970.532.7600 • F: 970.532.4884 • www.baselinecorp.com

DESIGNED BY	DATE
DAM	
DRAWN BY	DATE
DAM	
CHECKED BY	DATE
AAD	

EXTRACTION OIL & GAS LLC
WELD COUNTY
OFF-LOCATION FLOWLINE LAYOUT DRAWING
RINN VALLEY PRODUCTION FACILITY
SEC. 17, T2N, R68W 6TH P.M.

INITIAL SUBMITTAL	XX/XX/XX
DRAWING SIZE	11" X 17"
SURVEY FIRM	SURVEY DATE
SURVEY FIRM	XX/XX/XX
JOB NO.	EXT02N68W17-01
DRAWING NAME	Rinn Valley - FLOWLINE ASBUILT.dwg
SHEET	1 of 1

M:\co - Well Head Staking\EXT02N68W17-01 (RINN VALLEY)\Drawings\Rinn Valley - FLOWLINE ASBUILT.dwg, 1/9/2019 5:55:13 PM, Danny Miller